

BioStar 2	.....	1
BioStar 2	API .....	2
	.....	2
BioStar 2	.....	3
	.....	3
	.....	4

, BioStar 2

# BioStar 2



BioStar 2

Edge ( )

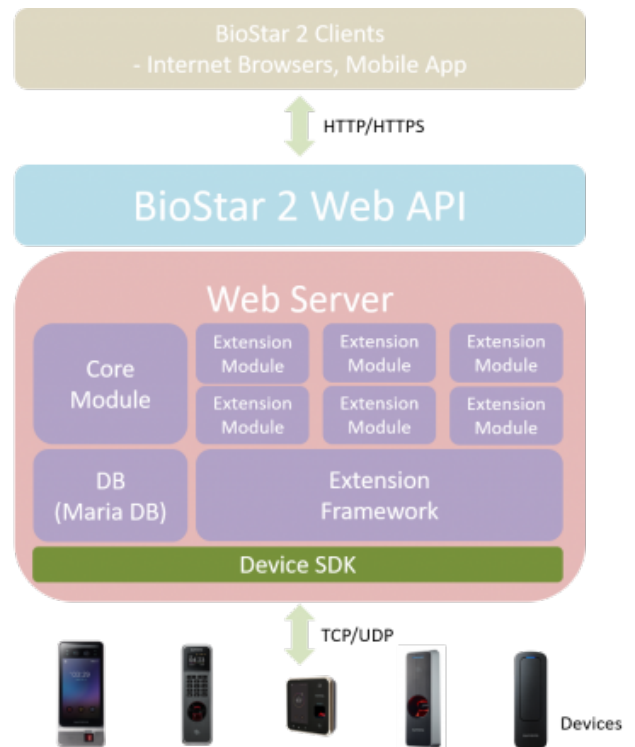
, BioStar 2

- ( API )
- BioStar 2

## BioStar 2

The web based open security platform providing unparalleled benefits with its powerful biometric access control solution to provide evolutionally efficiency not only to system users but also to system integrators and 3<sup>rd</sup> party system developers.

- Easy to Install, Use and Update
- Mobile App and BioStar Cloud
- Open Platform with its Portability



# BioStar 2 API

BioStar 2

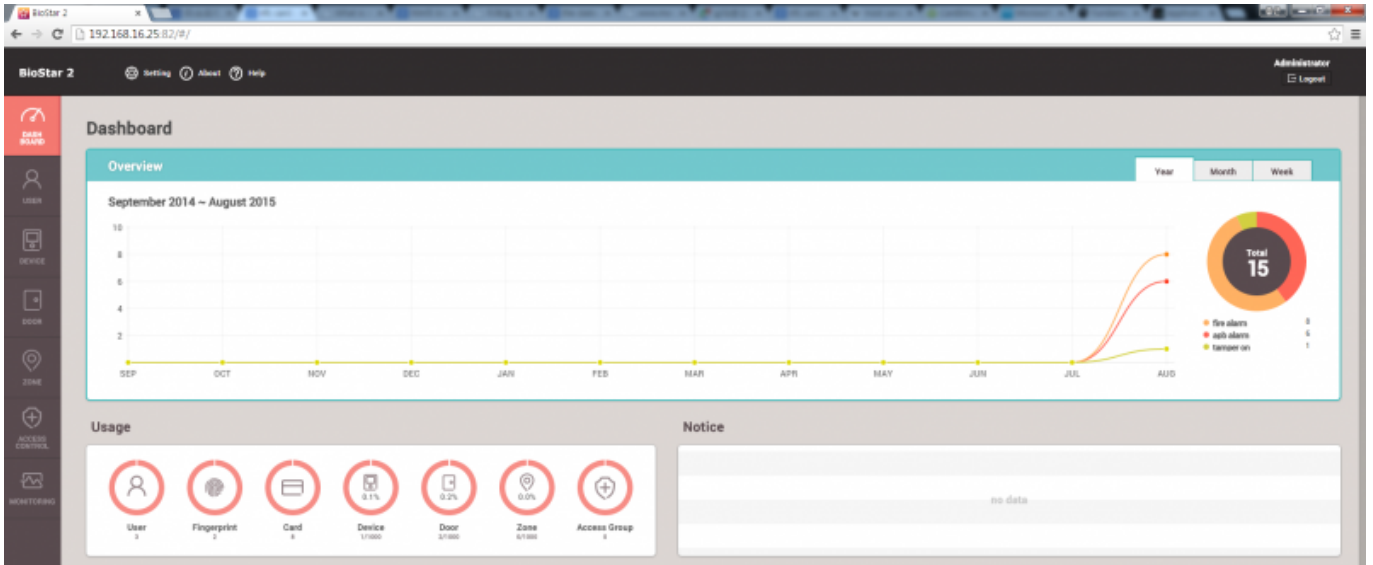
가

BioStar 2

가

, HTML5

Google Chrome



REST/JSON

API

API

SDK

가

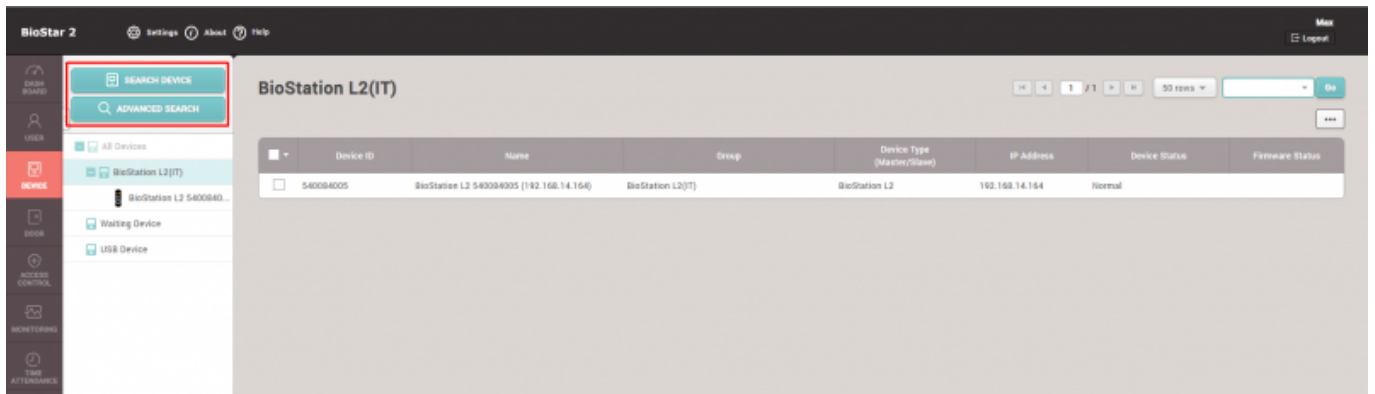
## What benefits

BioStar 2 API is server level API which means that the previous time-consuming Device SDK level of integration is not needed any more and more faster and easier integration can be made especially with 3<sup>rd</sup> party web based or mobile application by using Web API.

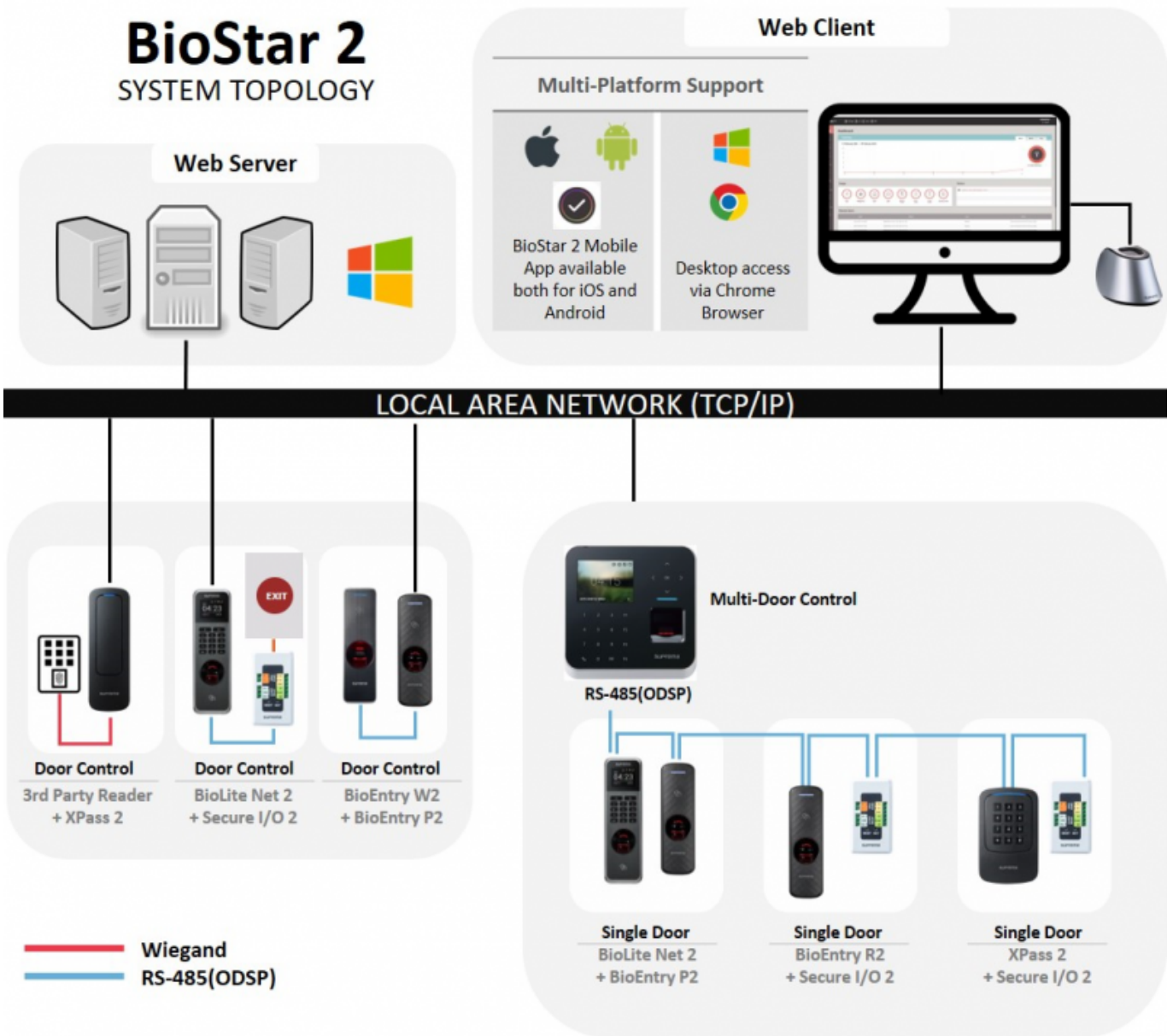


# BioStar 2

가  
API



# BioStar 2



✘	✘	✘	✘
BioEntry W2	BioStation L2	BioStation A2	BioStation 2
✘	✘	✘	✘
BioLite Net	BioEntry W	BioEntry Plus	Xpass
✘	✘	✘	
Xpass S2	Secure I/O 2	DM-20	

From: <http://kb.supremainc.com/knowledge/> -

Permanent link: [http://kb.supremainc.com/knowledge/doku.php?id=ko:what\\_is\\_biostar\\_2](http://kb.supremainc.com/knowledge/doku.php?id=ko:what_is_biostar_2)

Last update: **2017/01/04 15:35**