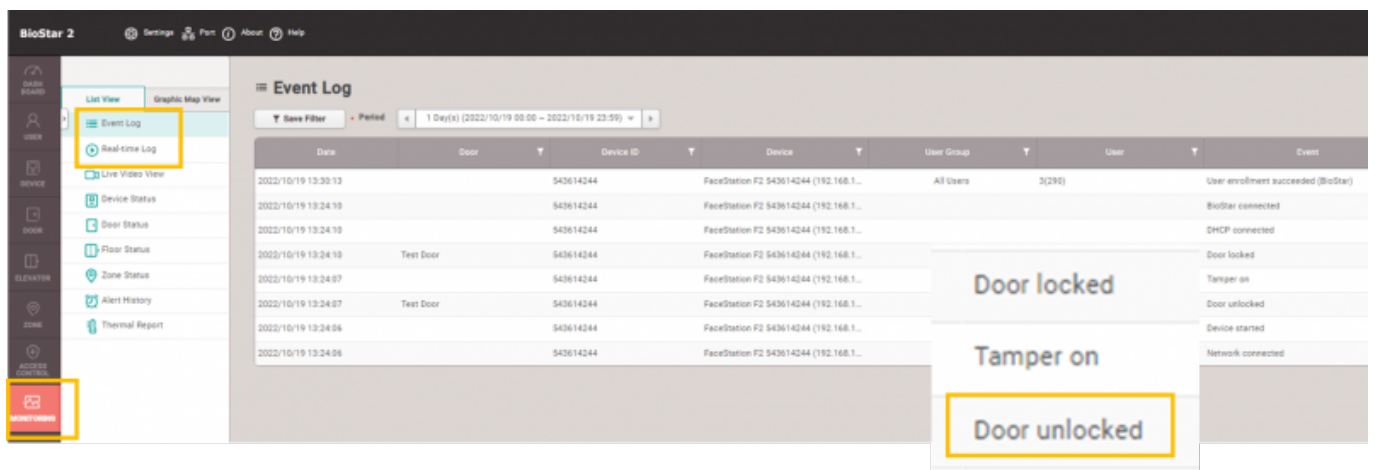


Table of Contents

Improvements upon event logs regarding door open 1

Improvements upon event logs regarding door open

In previous versions of BioStar 2, Door open logs were limited to “Door unlocked” in Monitoring Menu in both Event log and Real- Time Log.

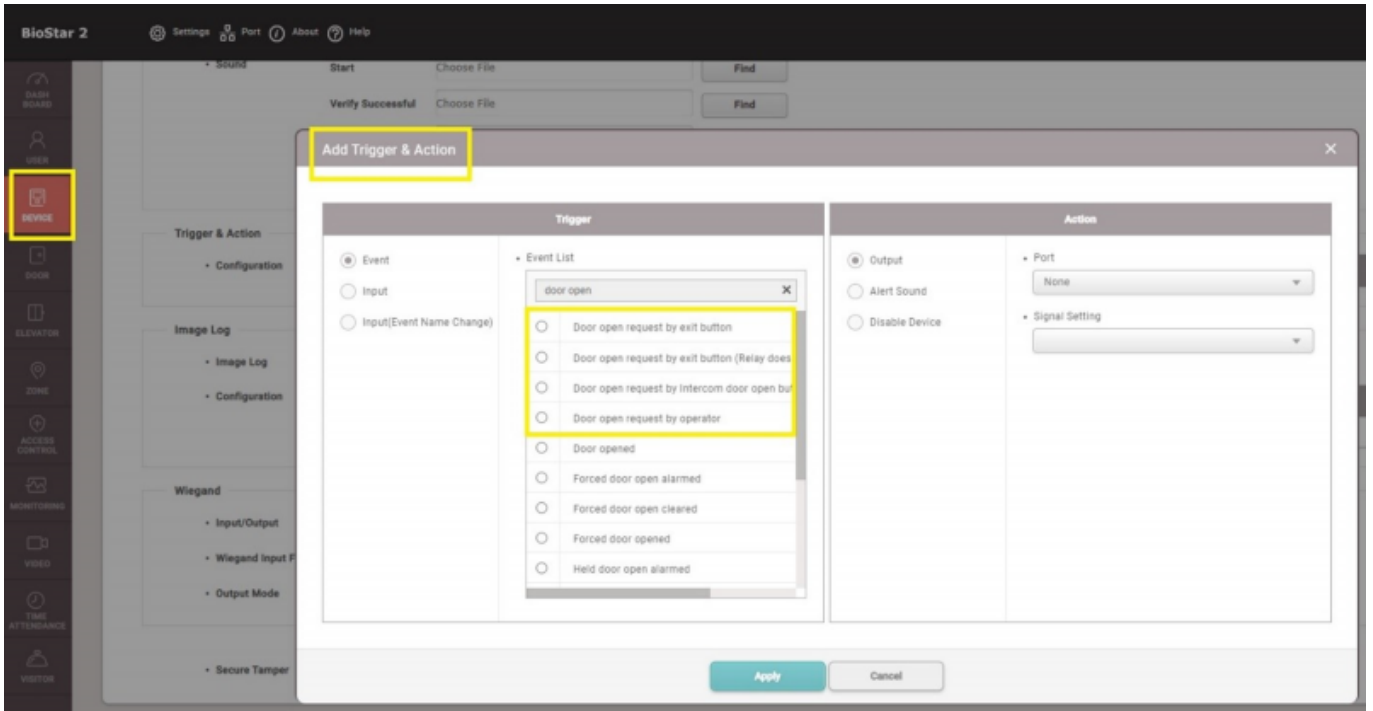


BioStar 2 Version 2.9.0 Newly Added Door Open logs

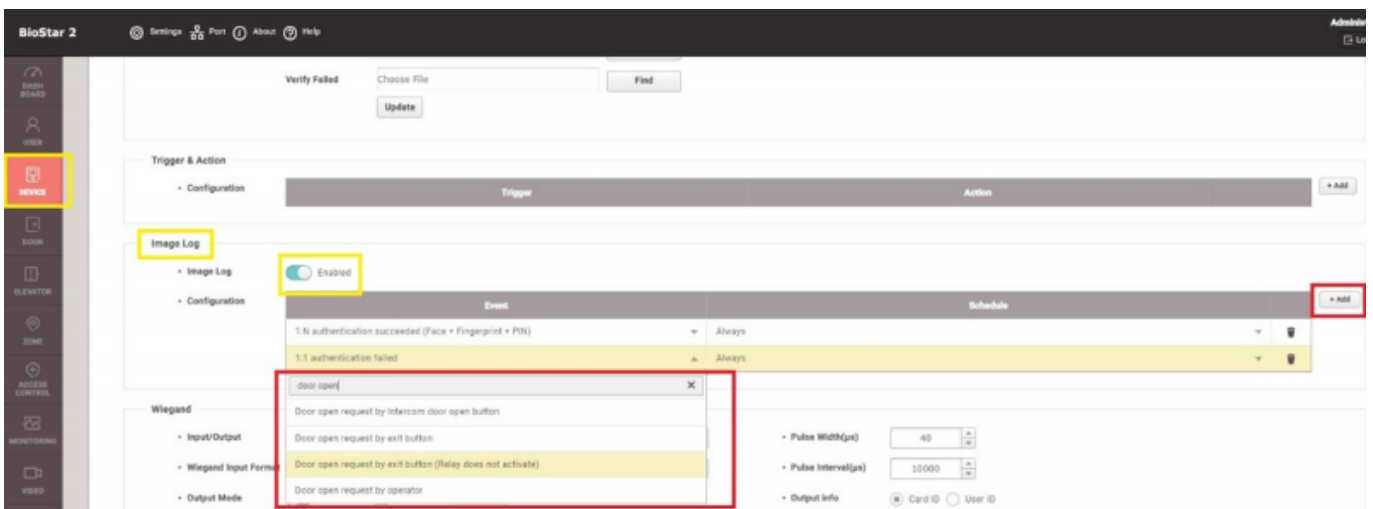
- Unordered List ItemDoor open requested by exit button
- Unordered List ItemDoor open requested by the operator
- Unordered List ItemDoor open requested by exit button (Replay does not activate)

Now BioStar 2 Version 2.9.0 consists Door Open logs in details. Detailed door open logs can be found in Monitoring menu in both Event Log and Real-time Log. Furthermore, these detailed door unlocked functions could be added on to trigger & action, and image log.

Device → Trigger & Action



Device Image Log

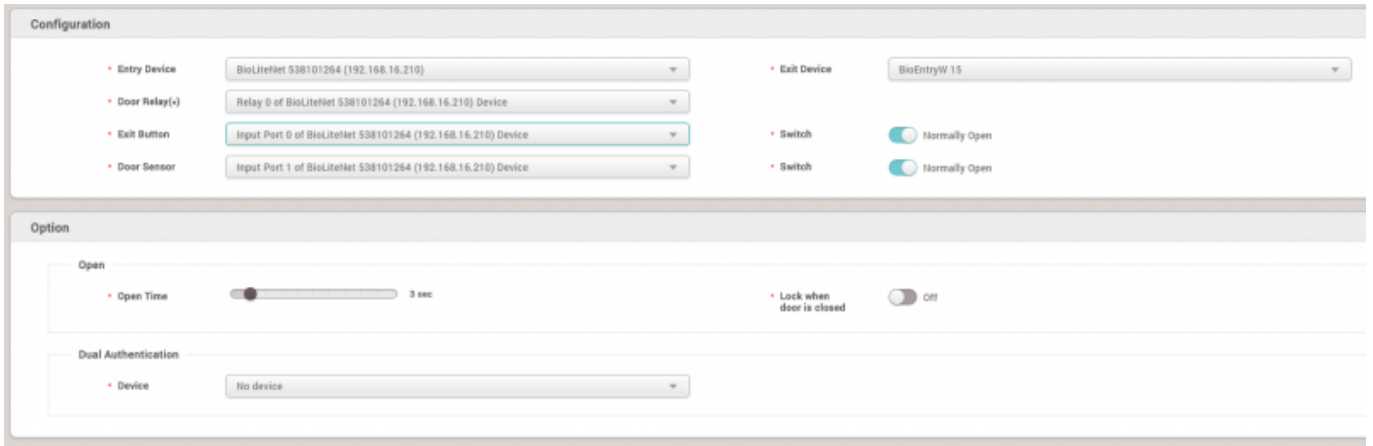


Newly added logs can be found in Monitoring menu in both Event Log and Real-time Log

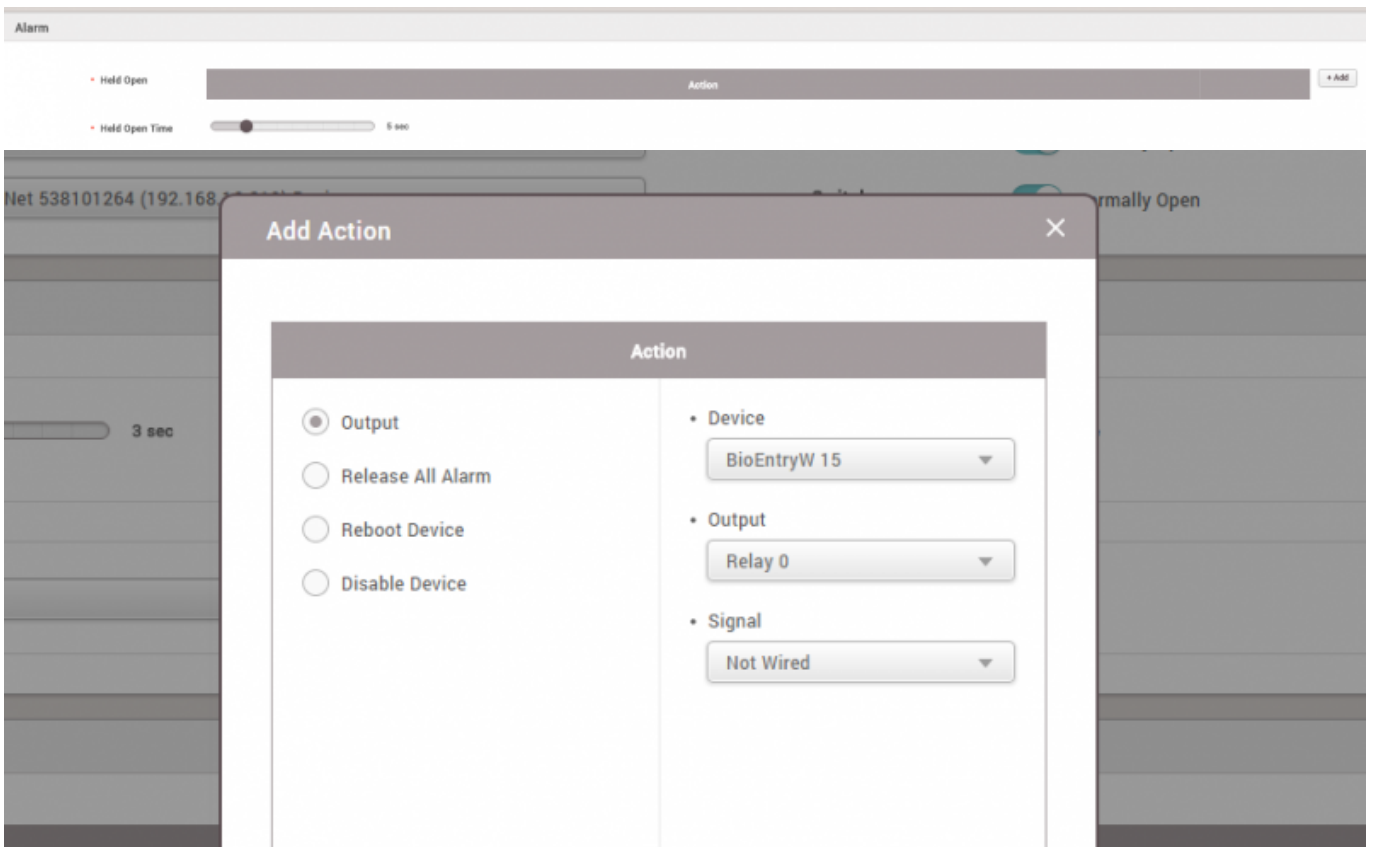
- Unordered List Item Door open request by exit button
- Unordered List Item Door open request by the operator when the operator clicks open button from BioStar 2 Door status menu, the door open time will be using the same setting as the Door open time.

</callout>

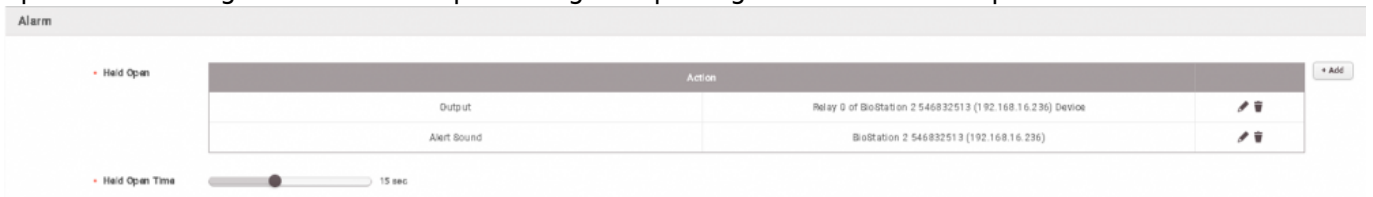
Once a device is added to the door, the device authentication mode changes to **No Access**. In order to allow user open access, configure **Access Groups**.



3) If the door sensor is applied, Held Open and Forced Open alarm can be set to use. Click the '+Add' button on the left and set to use 'Output' and select the device to make an 'Output' and the relay to send out an output signal. But if you want to make an alert only, you need to set the device which is not used for the door relay or other important output to the 'Device' and its relay to 'Output'. This is because it can be mixed and create an unplanned relay output.



i.e. Held Open Alarm Configuration for the door This configuration will help generate the Held door open alarmed log once the door opened log is kept longer than the Held Open Time.



i.e. Forced Open Alarm Configuration for the door This configuration will help generate the Forced door open alarmed log once the door opened log is detected without door unlocked log which is normally generated by user authentication, pressing a configured exit button, or clicking the Open

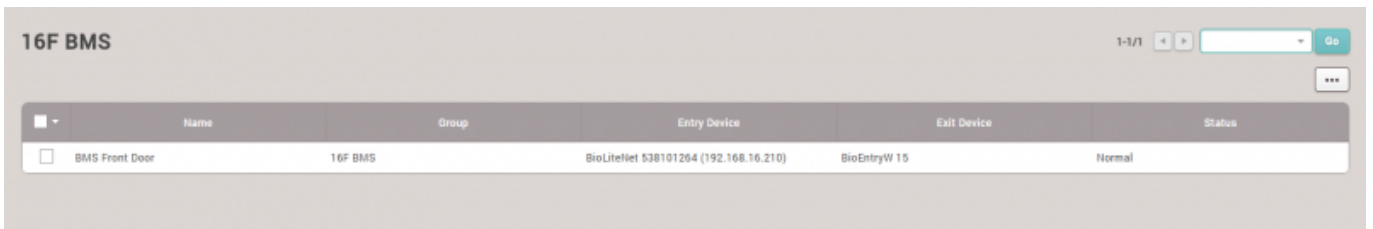
button on BioStar 2.



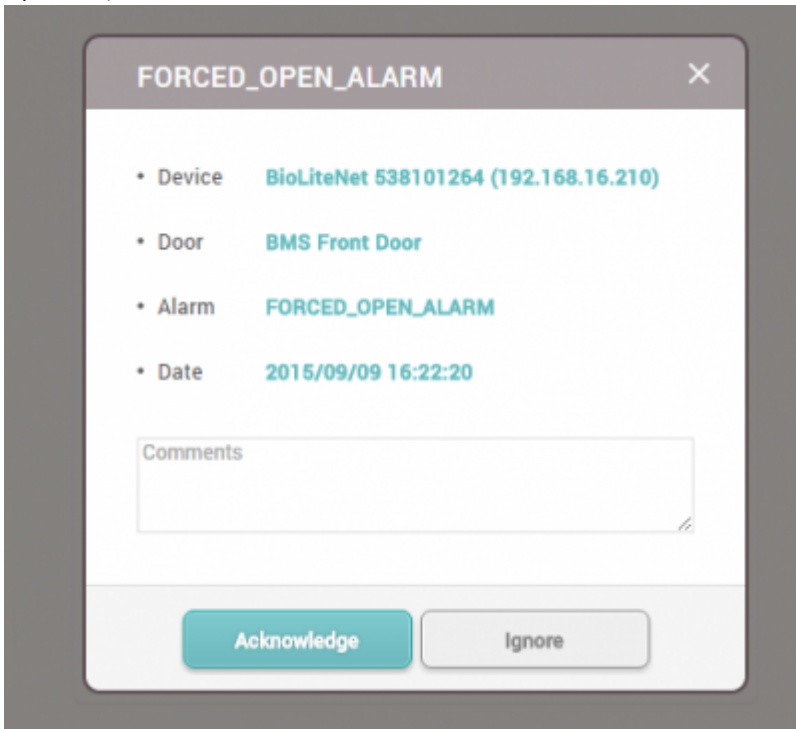
4) Set the hold open time from 1 sec to 15 min range. If the door is opened longer than this held open time setting, the alert event occurs to call attention to the situation.

5) In the same way, the 'Forced Open' alarm can be set to make an alert.

6) When you are done with the setting, make sure to click 'Apply', and check the setting result from the door list.



7) Then, test the door to make an alert event alarm.



From:

<http://kb.supremainc.com/knowledge/> -

Permanent link:

http://kb.supremainc.com/knowledge/doku.php?id=en:door_open_event_logs&rev=1701932058

Last update: **2023/12/07 15:54**