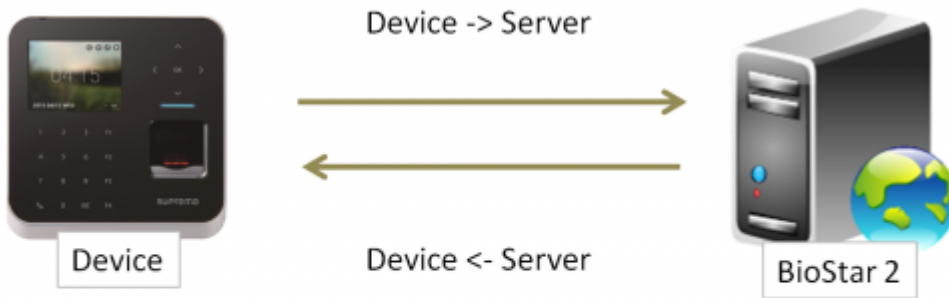


Table of Contents

How to add devices	1
Add devices to the BioStar 2 server	1
Add slave devices connected through RS-485 interface	4
Video Demo	7

How to add devices

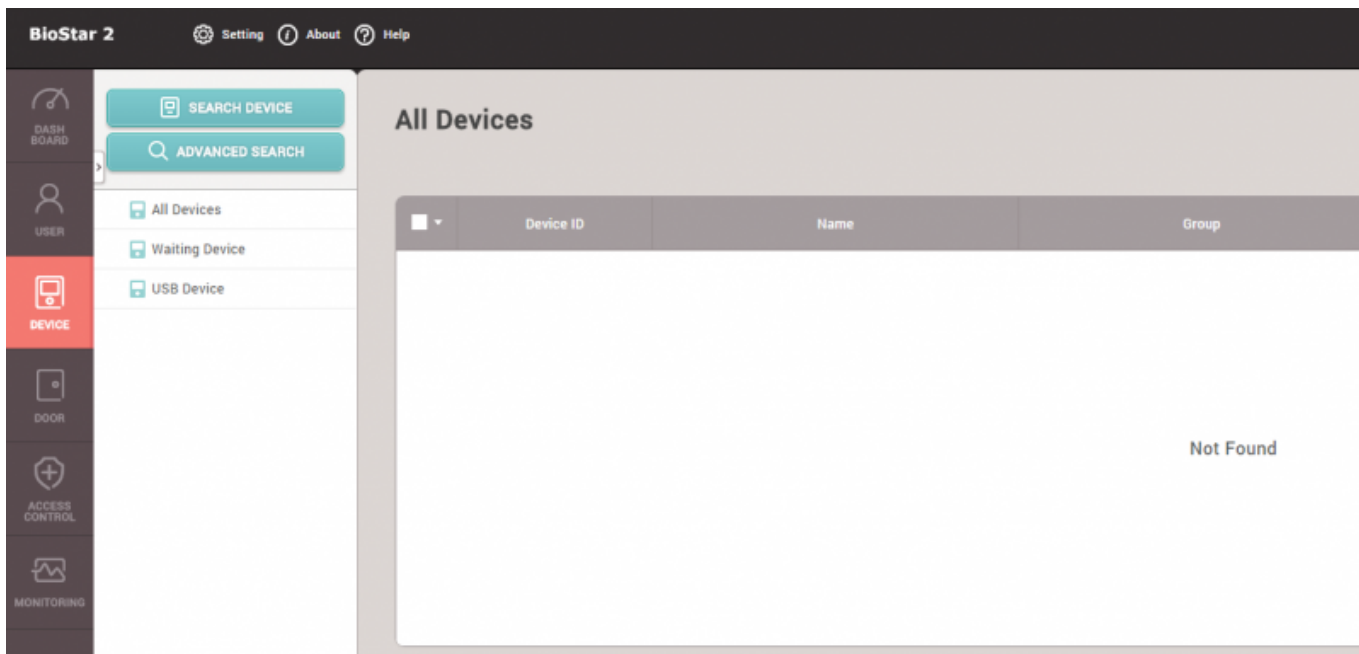
BioStar 2 supports two connection modes as the below image shows. Check the fundamental course contents for more information.



Function	BioStar 1.x		BioStar 2	
	Direct	Server	Device -> Server	Server -> Device
Mode	Only to Client	<input type="radio"/>	<input type="radio"/>	<input type="radio"/>
Realtime log update	Only to Client	<input type="radio"/>	<input type="radio"/>	<input type="radio"/>
Auto Reconnect	X	<input type="radio"/>	<input type="radio"/>	<input type="radio"/>

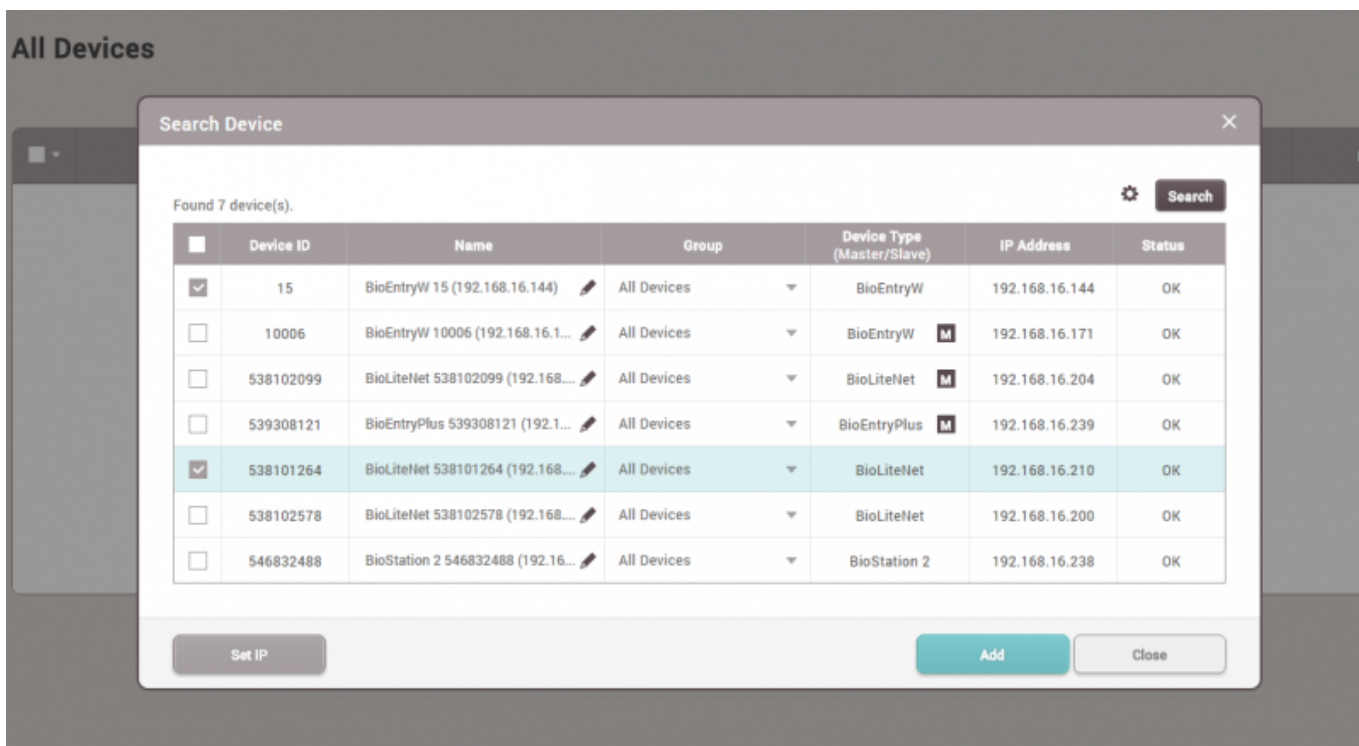
Add devices to the BioStar 2 server

1. Go to **Device** and click **Search Device**.

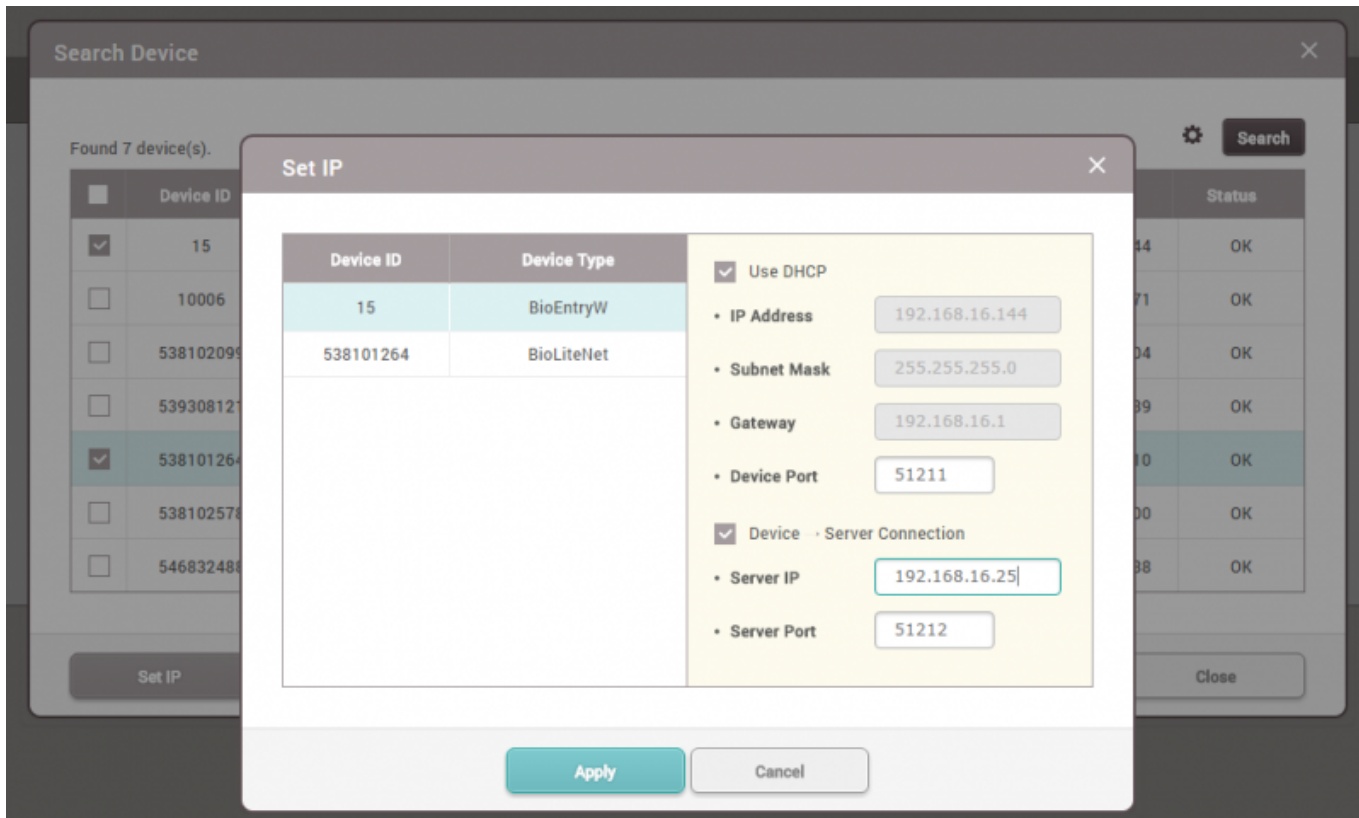


2. Select the devices to add to the server. BioStar 2 has two communication modes, **Device → Server** and **Server → Device**.

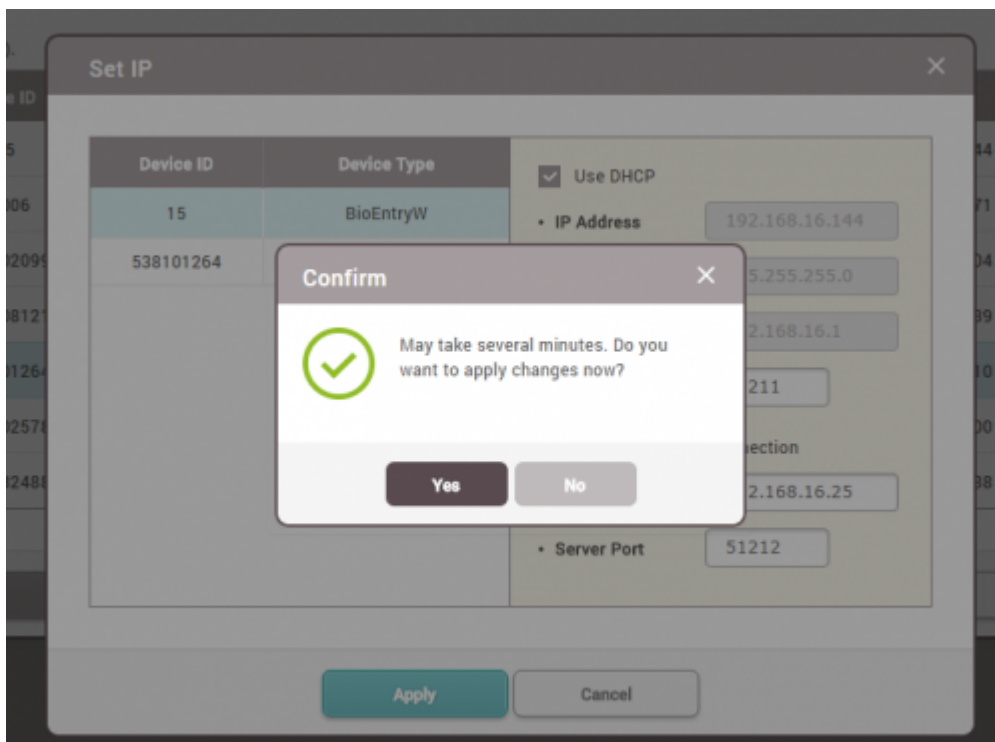
No functional difference between the two. But, **Device → Server** direction can protect the device connection not to be changed or disconnected from the designated server.



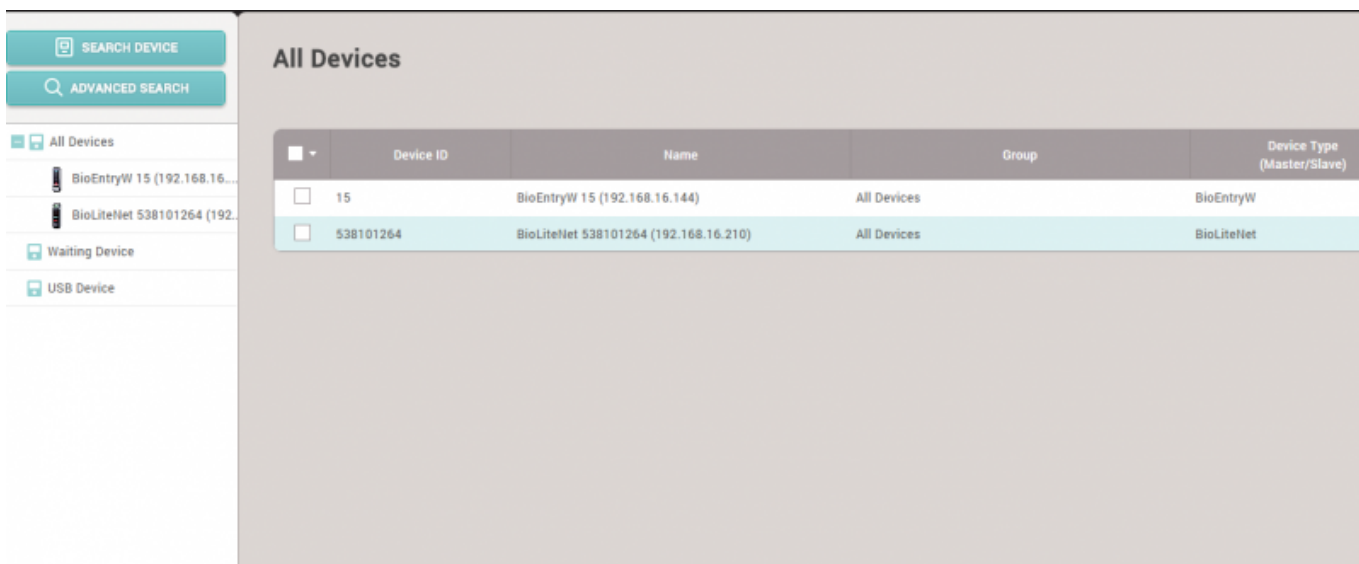
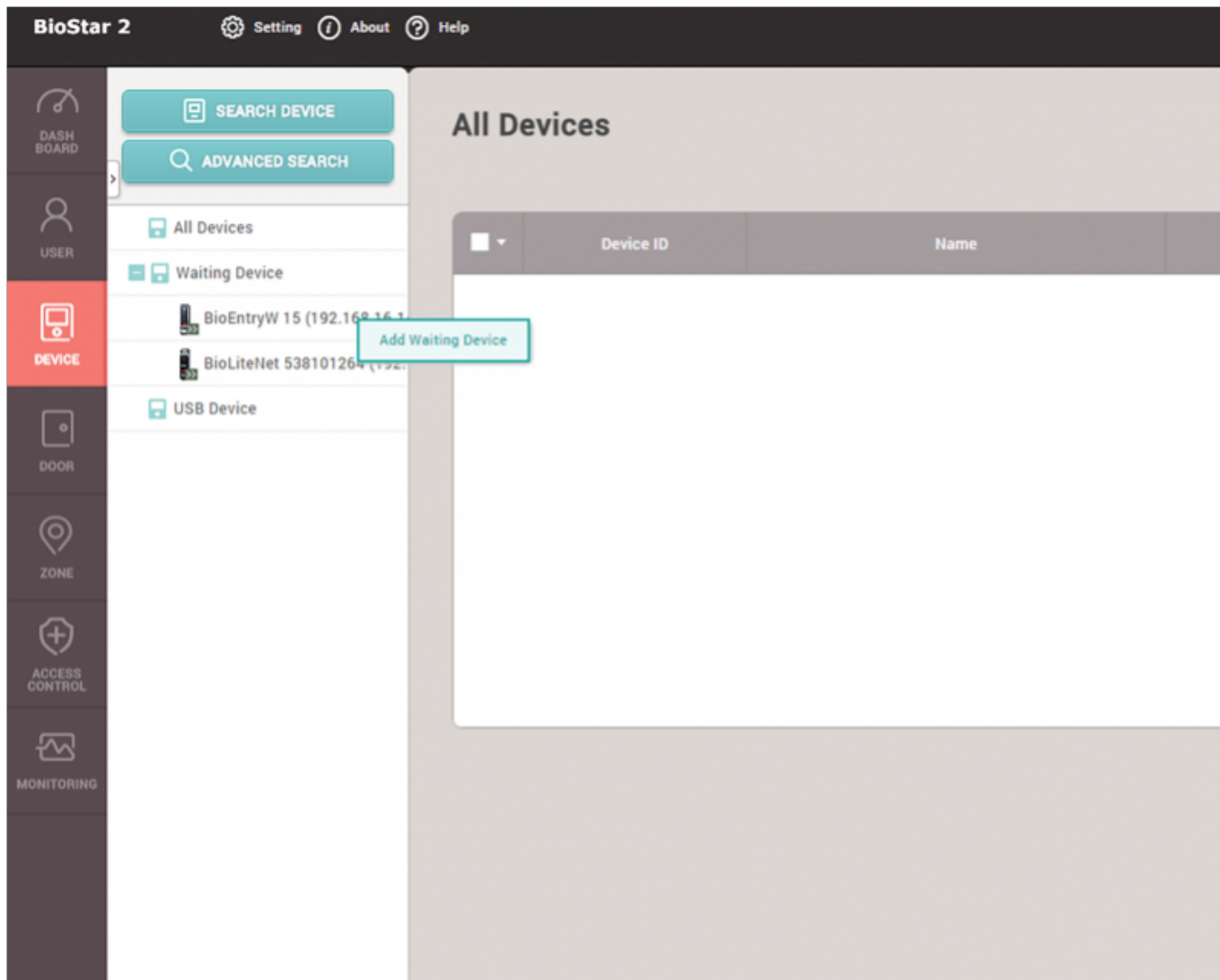
If you want to change the device IP address or their communication modes to **Device → Server**, click **Set IP** instead of **Add** button.



3. Set the server IP address and click **Apply**. Then, the device will automatically try to make a connection.

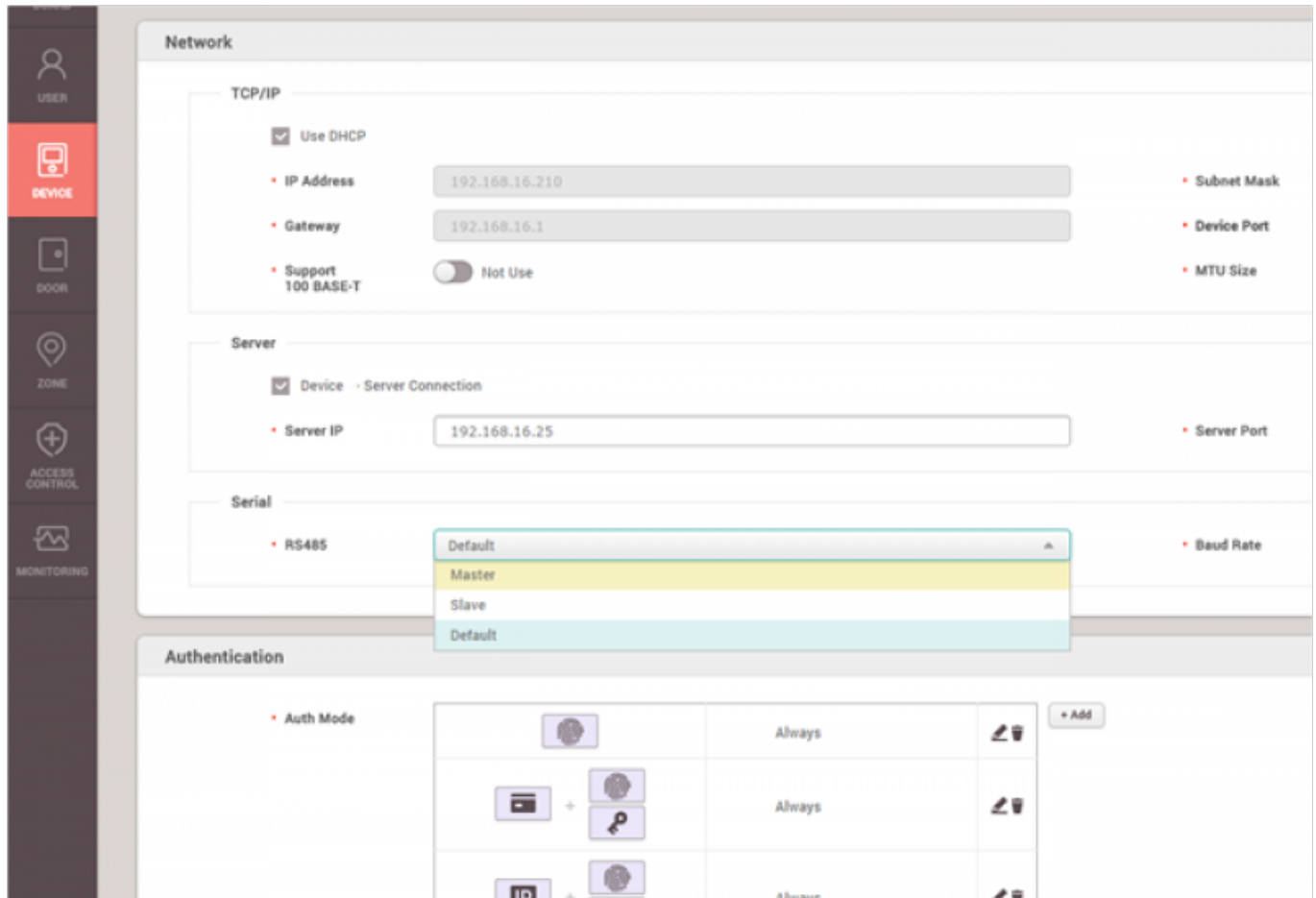


4. With the **Device** → **Server** direction, the device will be shown on the **Waiting Device** list. Refresh the browser to check the connectivity. Once you find the device, you can confirm and add them to the server by right clicking on the device tree and click **Add Waiting Device** button.



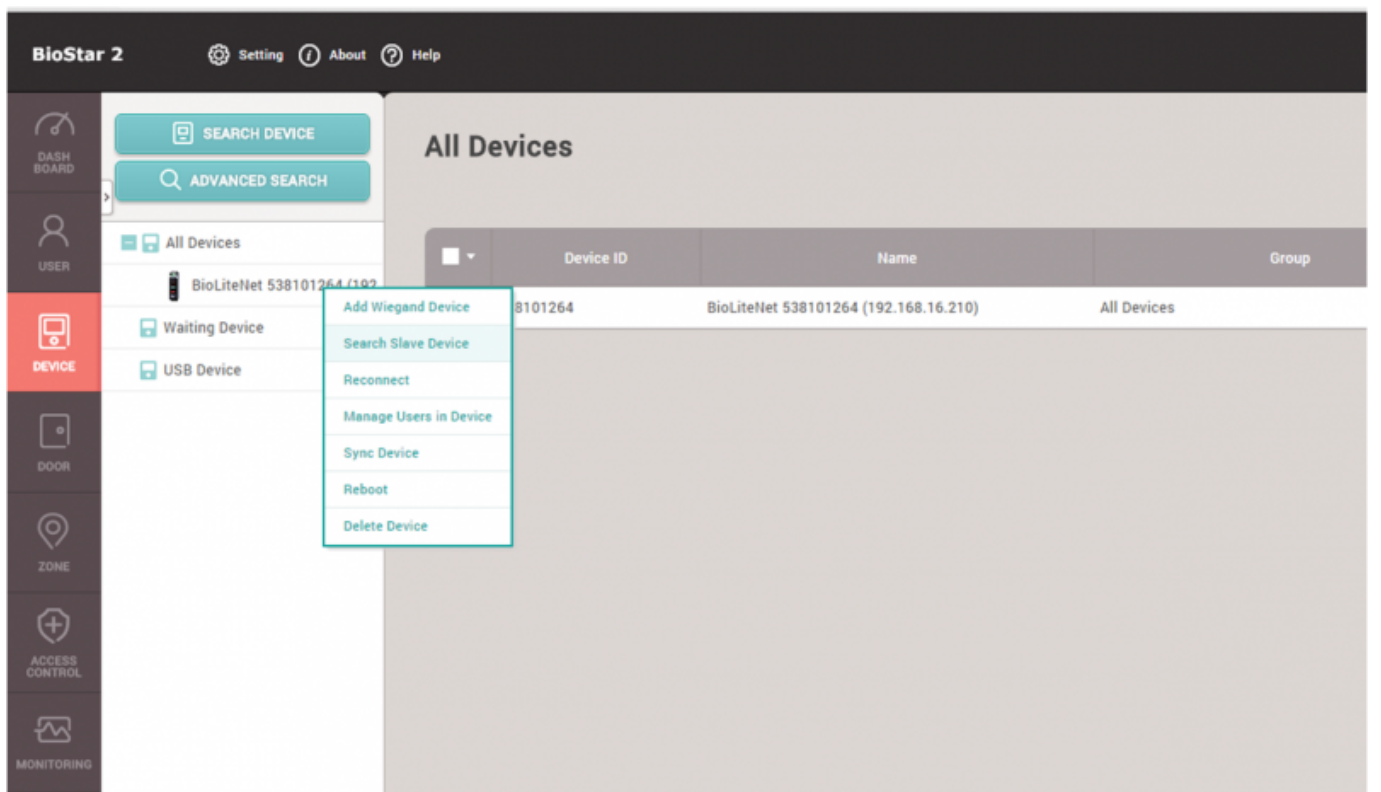
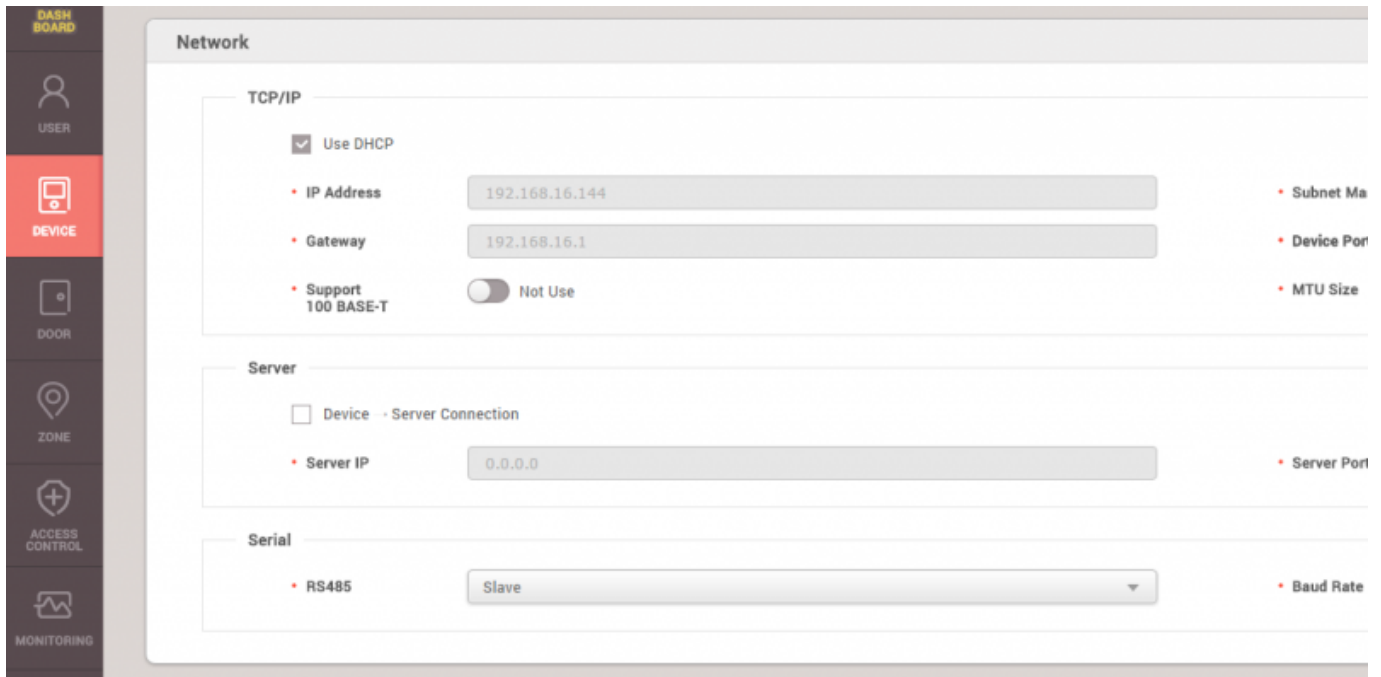
Add slave devices connected through RS-485 interface

1. Check the physical device connection, and change the device to be the master device in the device setting.

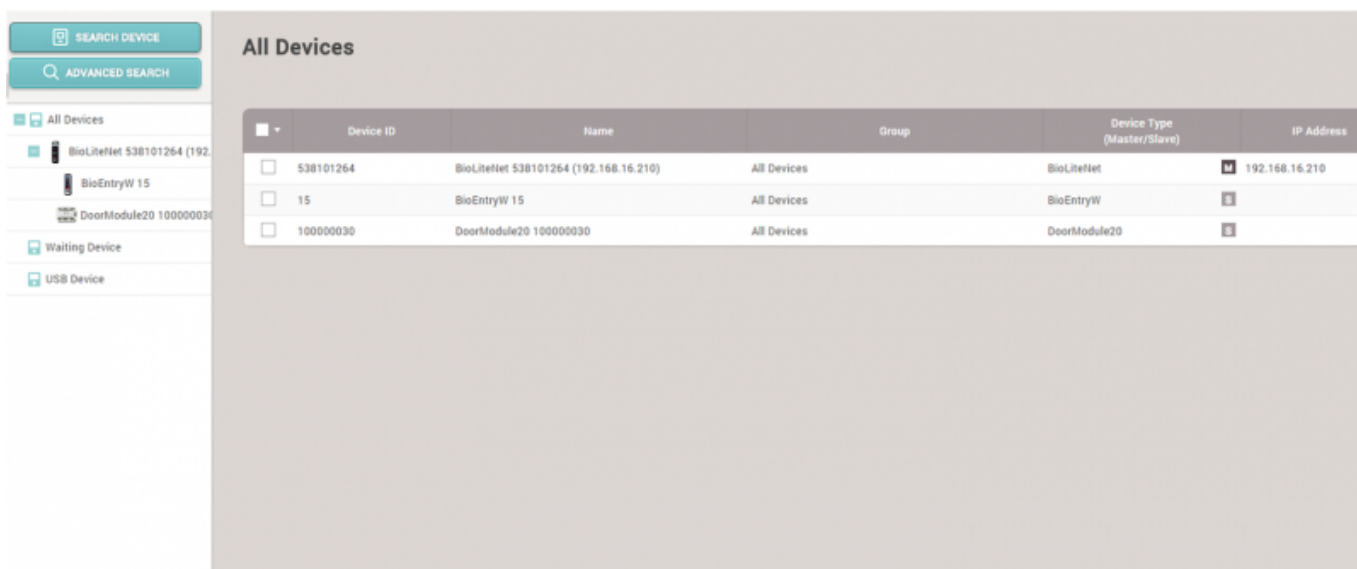
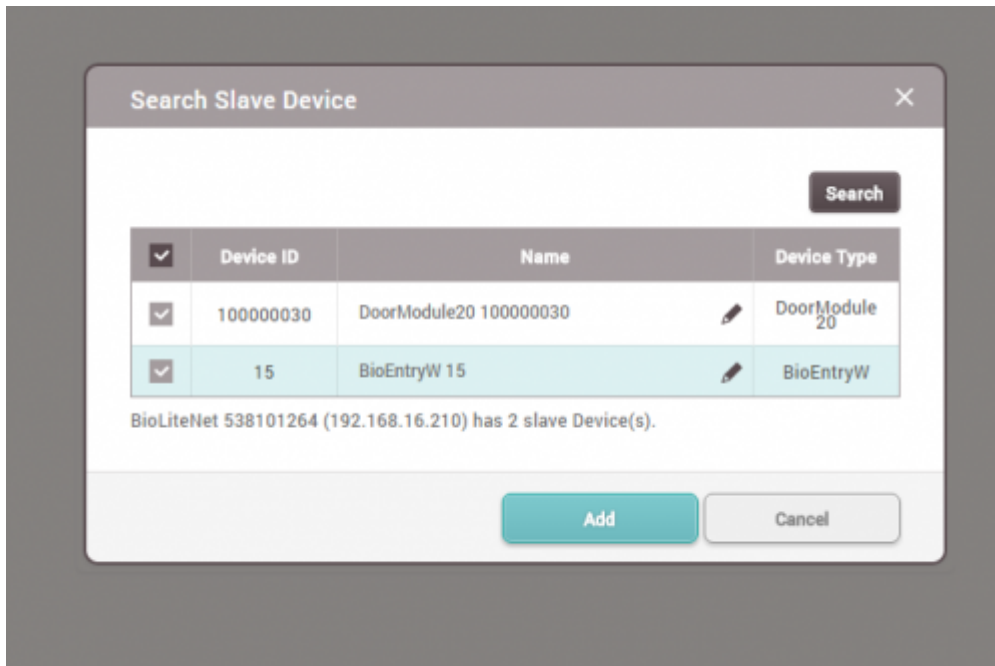


- Master - Making a logical decision and control a local zone
- Slave - Become a dummy reader to send credential input to the master device

2. Change the device to be **Slave Mode** to be able to be searched by the master device. Connect to the master device through RS-485 cable, and check the physical wiring connection, and go to BioStar 2 and **DEVICE** tap and right click from the device tree and then click **Search Slave Device**.



3. Check the search result and click **Add** button. Up to 31 slave devices can be connected through daisy chain, and up to 8 fingerprint devices can be connected among the total. But, if there's a situation of making many fingerprint matching with multiple number of devices at the same time, it's recommended to use the limited number of slave fingerprint devices for the optimal matching performance.



Video Demo

[devices.mp4](#)

From:

<http://kb.supremainc.com/knowledge/> -

Permanent link:

http://kb.supremainc.com/knowledge/doku.php?id=en:how_to_add_devices&rev=1467952617

Last update: **2016/07/08 13:36**