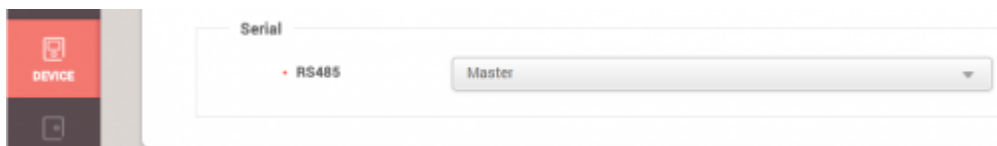


Table of Contents

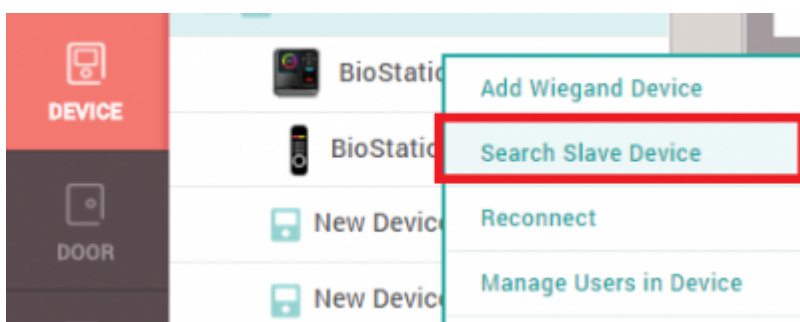
- How to Configure DM-20 1
- Configuring DM-20 for Device Trigger and Action 2
- Configuring DM-20 for Door Relay 3
- Configuring DM-20 to Trigger Relay Based on Event 4

How to Configure DM-20

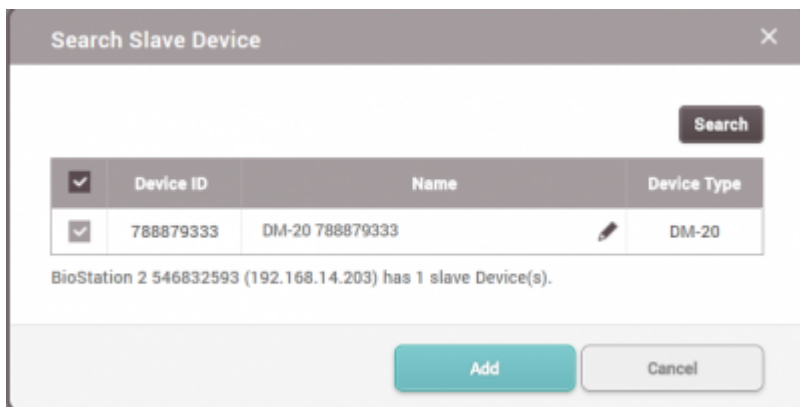
1. Click on your device that will be the master in the **DEVICE** menu.
2. Set **RS485** to **Master**.



3. Click **Apply**.
4. Right click on your device and select **Search Slave Device**.

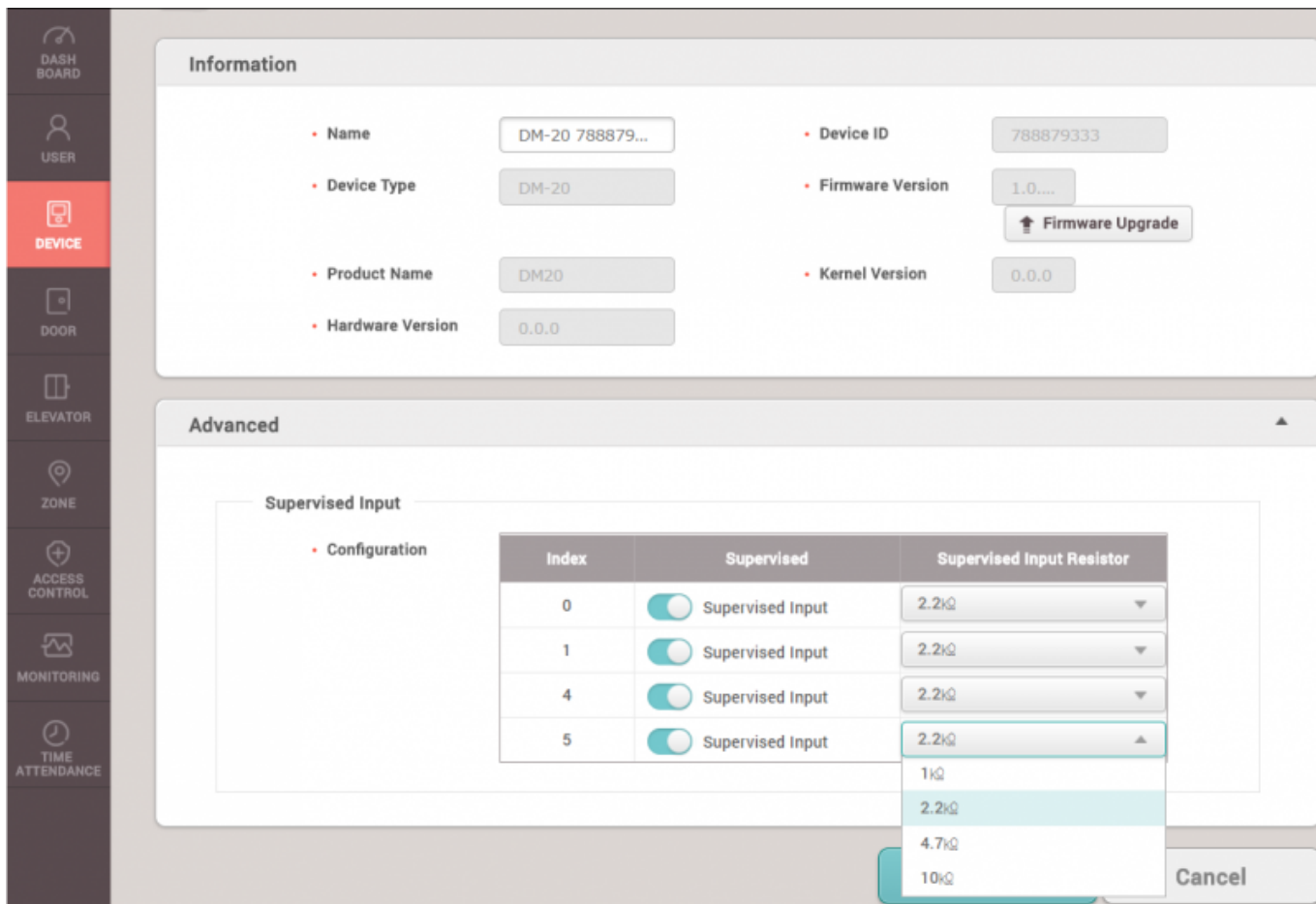


5. If it is wired correctly via RS-485 the DM-20 should appear on the device list.



6. Click **Add**.

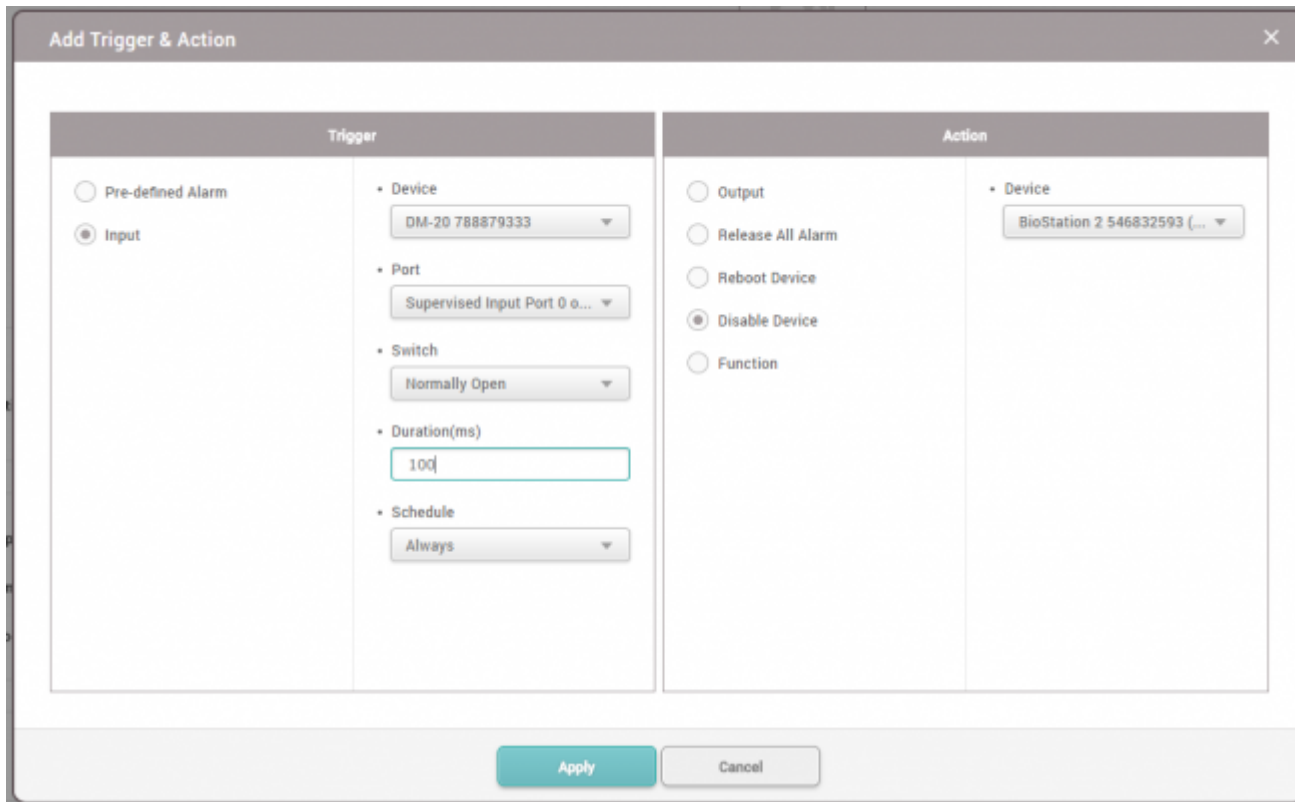
If you click on the DM-20 on the device menu, you can upgrade the firmware and also change the supervised input resistor values.
You can learn more about supervised input in the following link: [DM-20 Wiring Examples](#)



[DM-20 device menu]

Configuring DM-20 for Device Trigger and Action

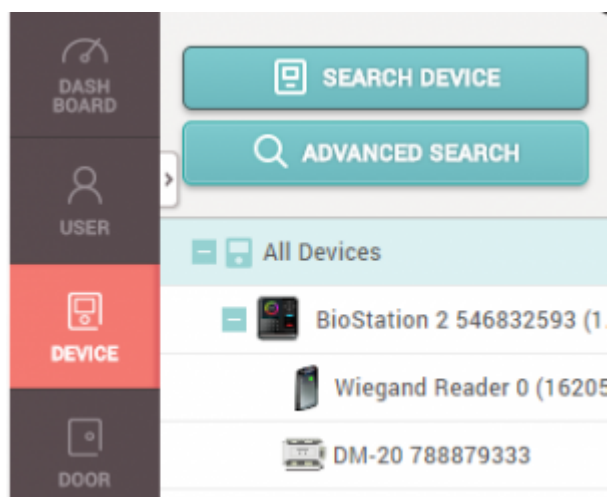
1. Click on the master device in the DEVICE menu.
2. Go to **Advanced > Trigger & Action**.
3. Click **+ Add**.
4. On the **Device** dropdown list select DM-20.
5. Configure other items as required.



Configuring DM-20 for Door Relay

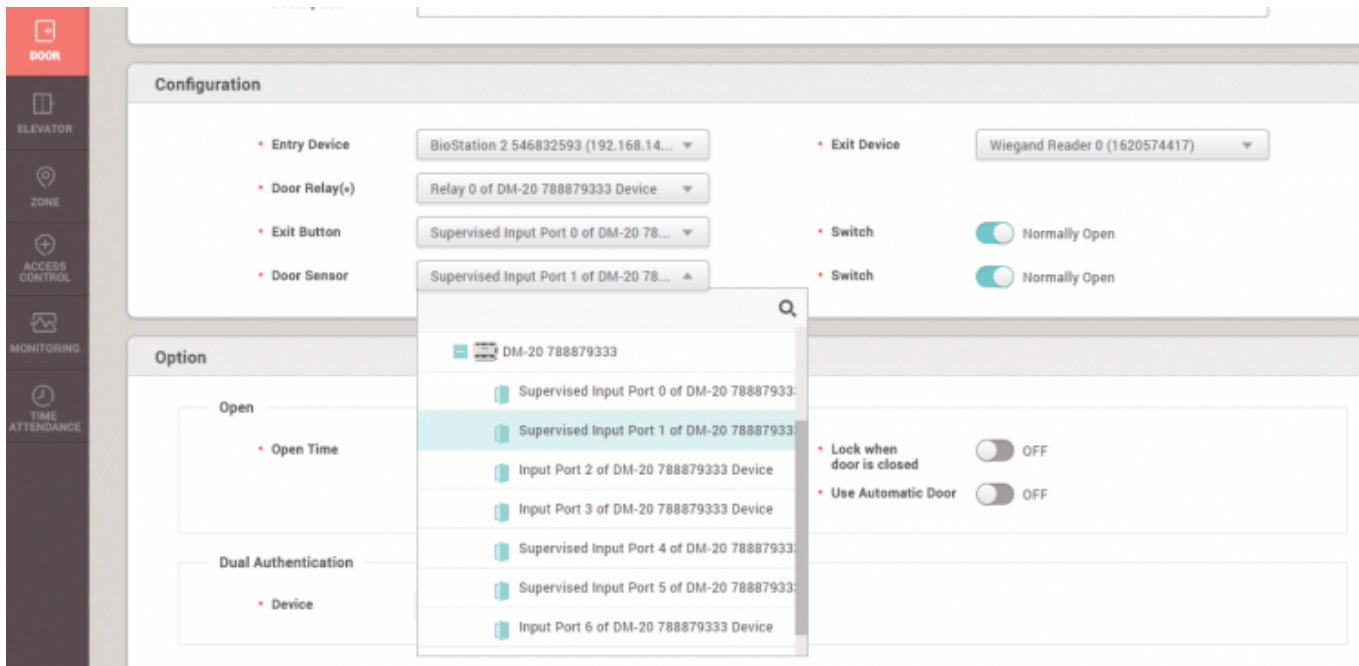
In this example we will use a Wiegand reader for the exit device. For other door configuration possibilities refer to the following article: [DM-20 Wiring Examples](#)

1. On the **DEVICE** menu right click on the master device and click **Add Wiegand Device**.



2. Click **Add**.
3. Click on the **DOOR** menu.
4. Click **ADD DOOR**.
5. Set the **Entry Device** as the master device.
6. Set the **Exit Device** as the **Wiegand Reader**.

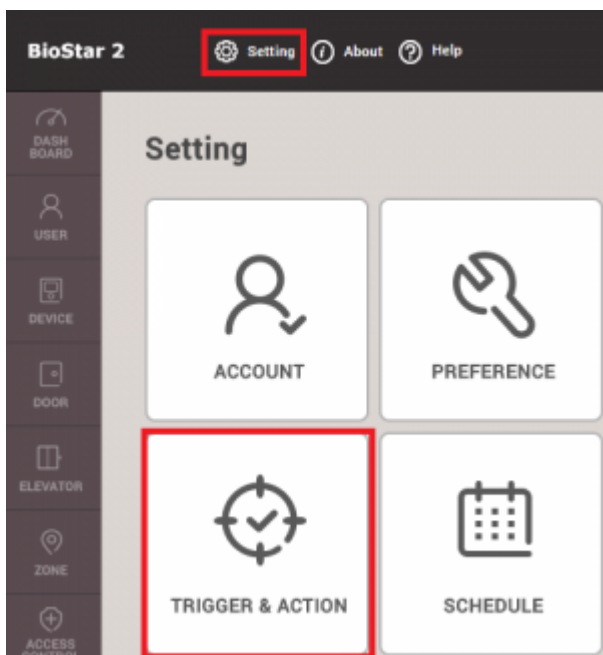
7. Configure the **Door Relay**, **Exit Button**, and **Door Sensor** with DM-20's input and relay as required.



8. Click **Apply**.

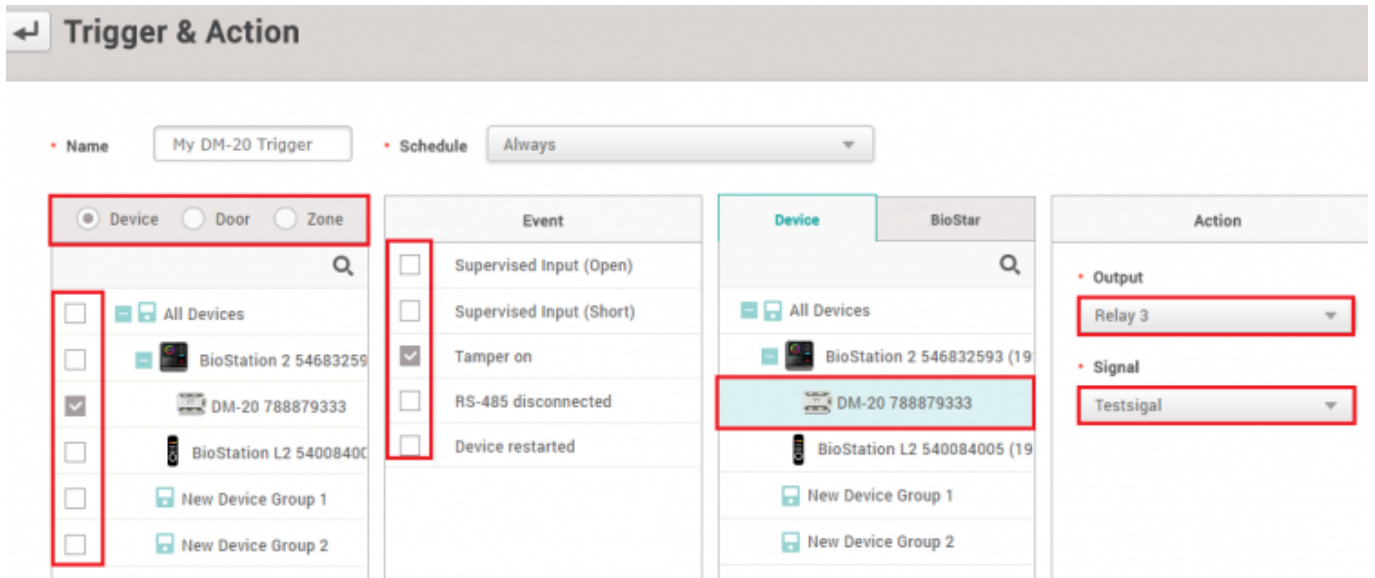
Configuring DM-20 to Trigger Relay Based on Event

1. Click on the **Setting** menu on the top bar of the web client.
2. Select **TRIGGER & ACTION**.



3. Click **ADD TRIGGER & ACTION**.
4. Select a **Schedule** when this trigger will be active.
5. Choose which type of event will trigger the output (Device / Door / Zone).
6. Select your Device / Door / Zone that will be the basis of this event.

- 7. Select your DM-20 on the **Device** tab.
- 8. Configure your **Output** relay and **Signal** interval.



- 9. Click **Apply**.

From:
<https://kb.supremainc.com/knowledge/> -

Permanent link:
https://kb.supremainc.com/knowledge/doku.php?id=en:how_to_configure_dm-20&rev=1501827166

Last update: **2017/08/04 15:12**