

Table of Contents

How to Use the New Feature "Timed Anti Passback" 1

Expectation effectiveness 1

Major Features 1

Precautions 3

How to Use the New Feature "Timed Anti Passback"

Affected Version: BioStar v2.9.5 or above

From v.2.9.5 of BioStar 2, the function "Timed Anti Passback (Timed APB)" has been introduced newly. With this new function, the user can set the reset time for anti-passback about the specific door to limit frequent access attempts to that door. With this feature, once the user authenticates on the entry device, the user cannot re-authenticate on the same entry device or the exit device connected with the entry device until the defined "Reset time" has been gone.

To use this new feature, there is no need to use the paid-for versions of the BioStar 2 license since this option can be set directly in the configured door in DOOR, not the Anti-passback Zone of ZONE in BioStar 2.

Expectation effectiveness

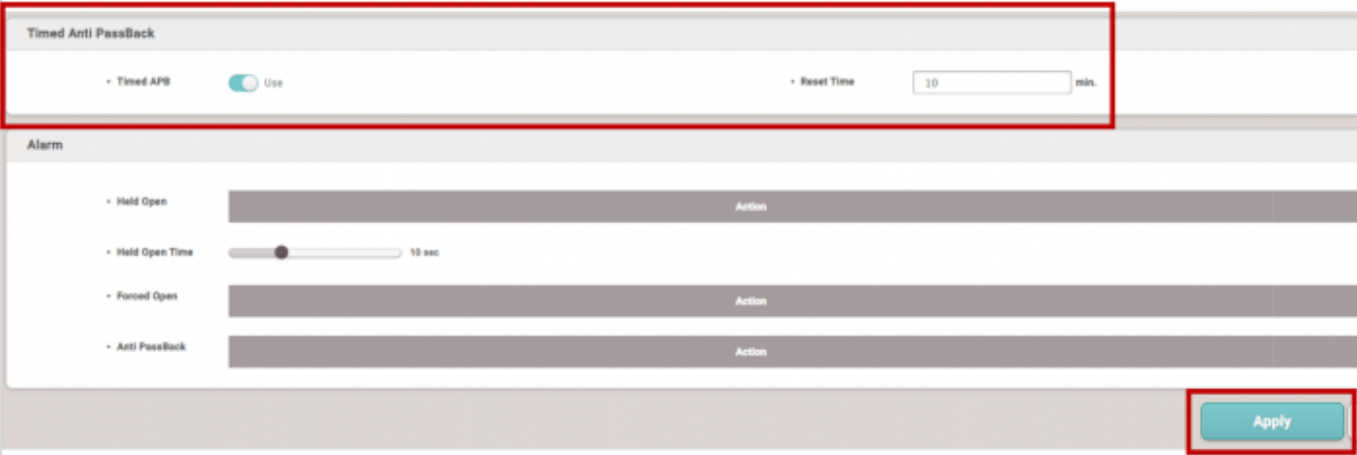
This function can be expected to prevent unauthorized people from using the authorized person's authentication method to go through the door without permission. To understand it deeply, please refer to the below example case.

Example Case) A case for using the new function "Timed Anti Passback."

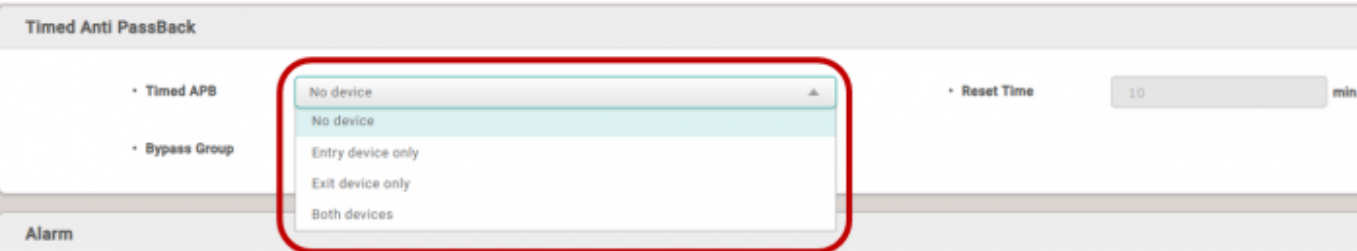
Let's say there is two people, person A and Person B, Person A has brought one's card for authentication but Person B has forgotten the card, so Person A enters the door using Person A's card and throughs (passes) the card to person B, when this new feature "Times Anti Passback" was not applied, Person B still could access the door. However, now, due to the specific time set feature "Reset Time," the unauthorized person can no longer enter the door using the same Person A's card until the card used passes the defined "Reset Time".

Major Features

1. Under BioStar 2 v2.9.7 or lower version, this new function can be applied to the door that consists of either "the Entry device only" or "the Entry device + the Exit device".



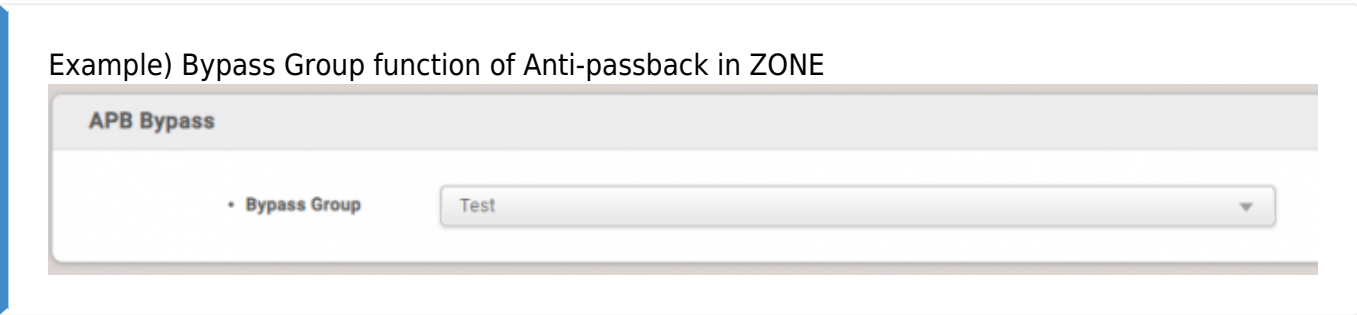
However, from BioStar 2 v2.9.8 or higher version, this new function can be applied to the device itself, such as “the Entry device” “the exit device” or “the Entry device + the Exit device”, NOT the door.



2. The “Timed Anti Passback” event code is supported in Event Log of Monitoring in BioStar 2.

Event Log							
Save Filter		Period 1 Day(s) (2024/03/26 00:00 ~ 2024/03/26 23:59)					
Date	Door	Device ID	Device	User Group	User	Event	
2024/03/26 15:46:36	Test	547839816	BioLite N2 547839816 (192.168.4...			Door locked	
2024/03/26 15:46:33	Test	547839816	BioLite N2 547839816 (192.168.4...			Door unlocked	
2024/03/26 15:46:33		547839816	BioLite N2 547839816 (192.168.4...	All Users	2(Jake)	1:1 authentication succeeded (Card)	
2024/03/26 15:44:37	Test	547839816	BioLite N2 547839816 (192.168.4...			Timed anti-passback violation detected	
2024/03/26 15:44:37		547839816	BioLite N2 547839816 (192.168.4...	All Users	2(Jake)	Access denied (Timed anti-passback)	
2024/03/26 15:44:25	Test	547839816	BioLite N2 547839816 (192.168.4...			Timed anti-passback violation detected	
2024/03/26 15:44:25		547839816	BioLite N2 547839816 (192.168.4...	All Users	2(Jake)	Access denied (Timed anti-passback)	
2024/03/26 15:44:21	Test	547839816	BioLite N2 547839816 (192.168.4...			Door locked	
2024/03/26 15:44:18	Test	547839816	BioLite N2 547839816 (192.168.4...			Door unlocked	

3. Under BioStar 2 v2.9.7 or lower version, unlike the Anti-passback inside of the “Zone” menu, “Timed Anti Passback” DOES NOT support the “Bypass Group” function.



However, from BioStar 2 v2.9.8 or higher version, “Timed Anti PassBack” function also supports the “Bypass Group” function.

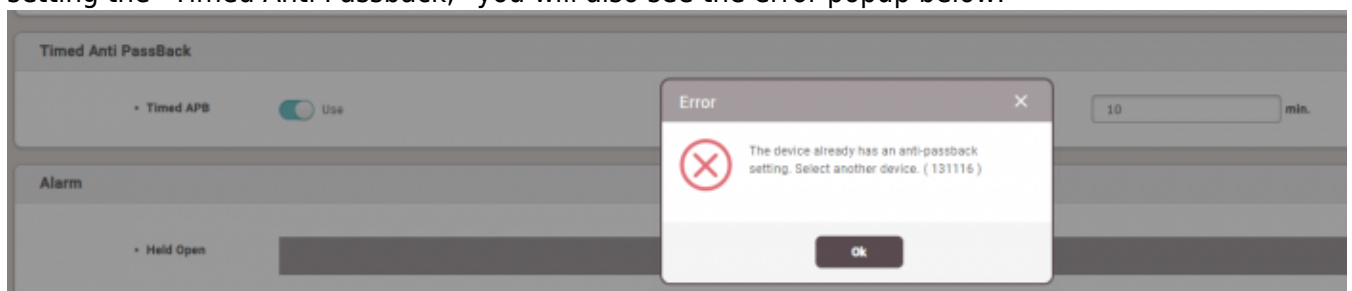
4. The input unit is in minutes (min.), with a default setting of 10 minutes. Users can input a time between 0 and 60 minutes.

Precautions

1. You cannot use this new function at the same time as the existing "Anti-passback" function. So, you must be careful about the 2 exceptional cases below when using the "Timed Antipass Back" function.

- **Case 1. A case where you already use "anti-passback" in ZONE**

If you try to set the "Timed Anti Passback" after configuring the Anti-passback zone, you will see the error popup below. On the contrary, when you try configuring the Anti-passback zone after already setting the "Timed Anti Passback," you will also see the error popup below.



- **Case 2. In case you want to set "anti-passback" in DOOR**

If Soft APB or Hard APB in Anti PassBack, the option "Timed APB" will be automatically deactivated. Timed Anti Passback CAN NOT BE USED WITH Anti PassBack Soft APB or Hard APB.

2. Supports the Alarm Function

- **If using BioStar 2 v2.9.7 or lower version:**

The alarm function Does Not support "Timed Anti Passback" yet but only supports "Anti PassBack" in the configured door.

From:

[http://kb.supremainc.com/knowledge./](http://kb.supremainc.com/knowledge/) -

Permanent link:

http://kb.supremainc.com/knowledge./doku.php?id=en:how_to_use_timed_anti_passback&rev=1734489745

Last update: **2024/12/18 11:42**