

Table of Contents

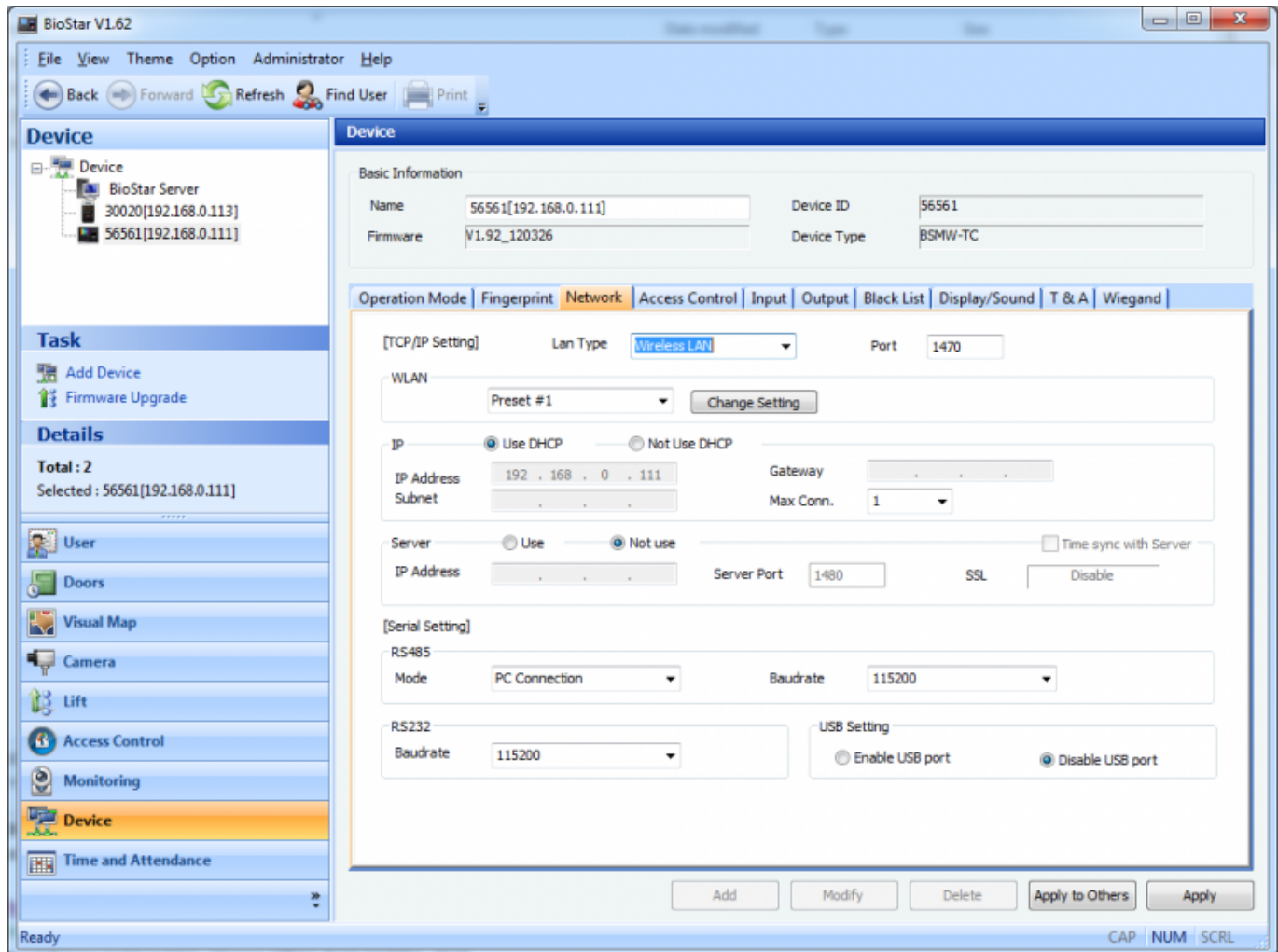
How to configure the WLAN settings 1

BioStar 1, WLAN

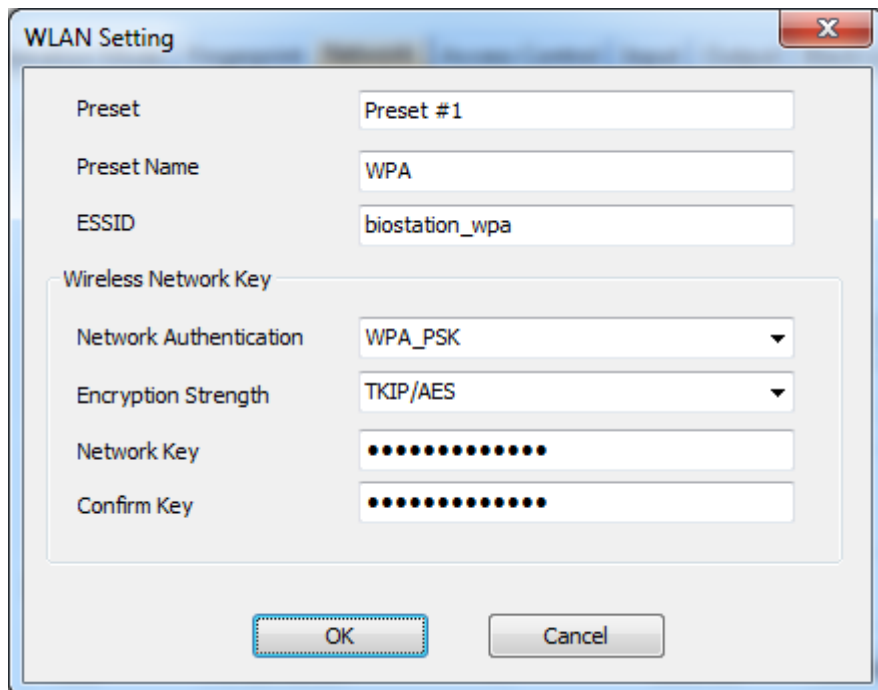
How to configure the WLAN settings

BioStation (BSMW) can connect to BioStar through a Wi-Fi network and it works in the same way that it works on the LAN.

1. Go to the **Network** tab of the **Device** page on the BioStar client application. Change **Lan Type** to **Wireless LAN**.



2. Click **Change Setting**. This will bring up the WLAN Setting dialog.

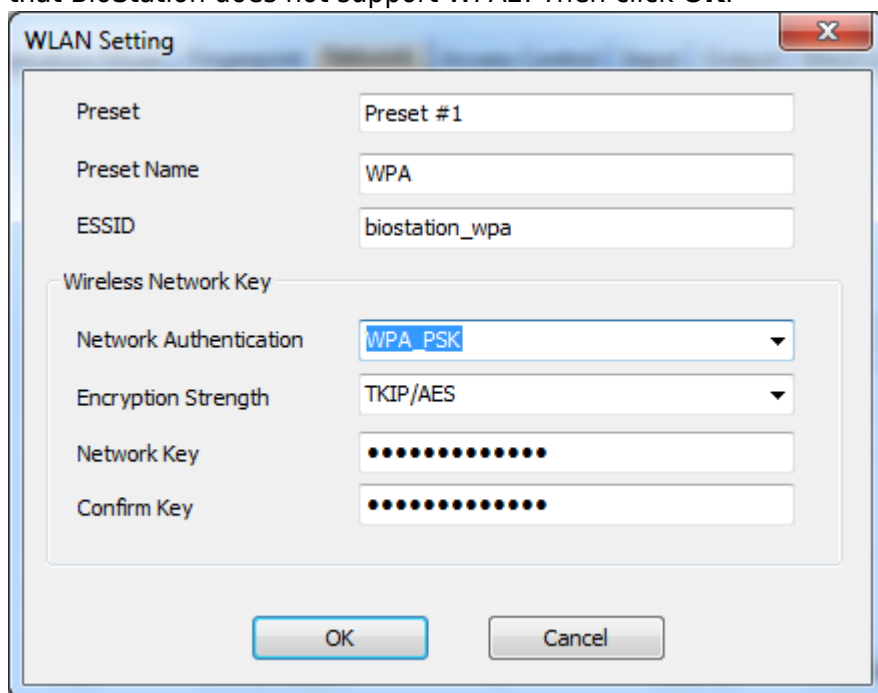


The image shows a 'WLAN Setting' dialog box with the following fields and values:

Field	Value
Preset	Preset #1
Preset Name	WPA
ESSID	biostation_wpa
Wireless Network Key	
Network Authentication	WPA_PSK
Encryption Strength	TKIP/AES
Network Key	••••••••••
Confirm Key	••••••••••

At the bottom are 'OK' and 'Cancel' buttons.

3. Configure the Wi-Fi Settings based on the type of an access point that you want to connect to. Note that BioStation does not support WPA2. Then click **OK**.

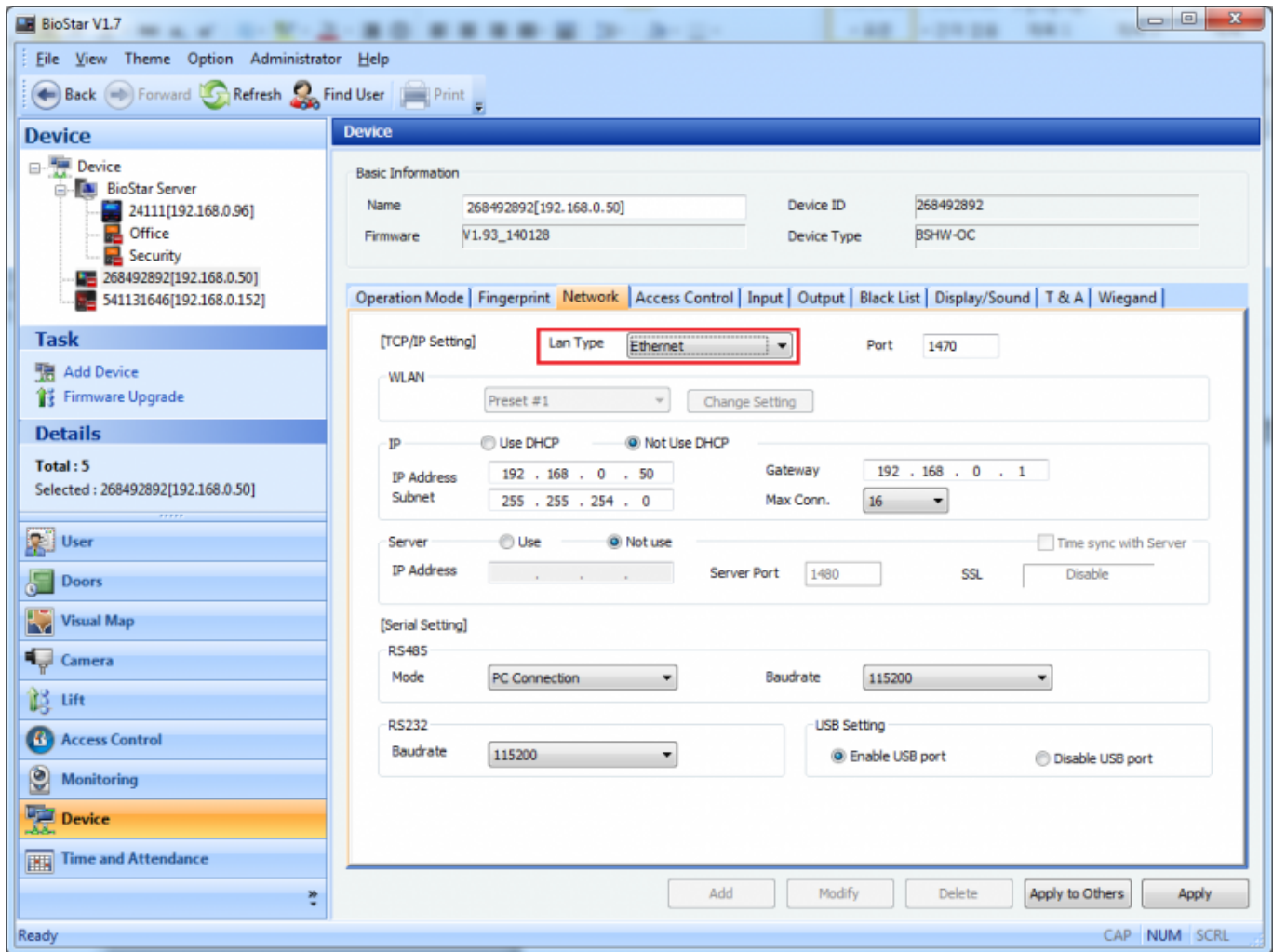


The image shows the same 'WLAN Setting' dialog box as above, with the 'Network Authentication' dropdown menu highlighted in blue.

Field	Value
Preset	Preset #1
Preset Name	WPA
ESSID	biostation_wpa
Wireless Network Key	
Network Authentication	WPA_PSK
Encryption Strength	TKIP/AES
Network Key	••••••~••••••
Confirm Key	••••~••••••••••

At the bottom are 'OK' and 'Cancel' buttons.

4. Change the **Lan Type** option to Ethernet.



5. Click **Apply** to transfer the settings to the device.
6. Enter the menu of a device and go to **Network > TCP/IP < F1 More > F3 WLAN**.
7. Check if the settings are properly transferred.
8. Press ESC and change **LAN Type** to **Wireless LAN** and press **OK**.

From:
<https://kb.supremainc.com/knowledge/> -

Permanent link:
https://kb.supremainc.com/knowledge/doku.php?id=en:1xfaq_how_to_configure_the_wlan_settings_on_biostar

Last update: **2015/10/08 16:37**