

Table of Contents

How to connect AXIS NVR with BioStar	1
Installing AXI Camera Station SDK	1
Configuring AXIS Camera Station Server	1
Configuring the camera settings of BioStar Client	2
How to log in to AXIS NVR	3

BioStar 1, AXIS, NVR

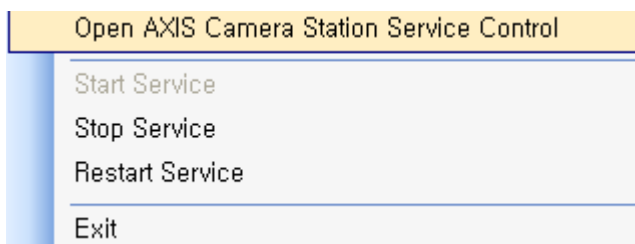
How to connect AXIS NVR with BioStar

Installing AXI Camera Station SDK

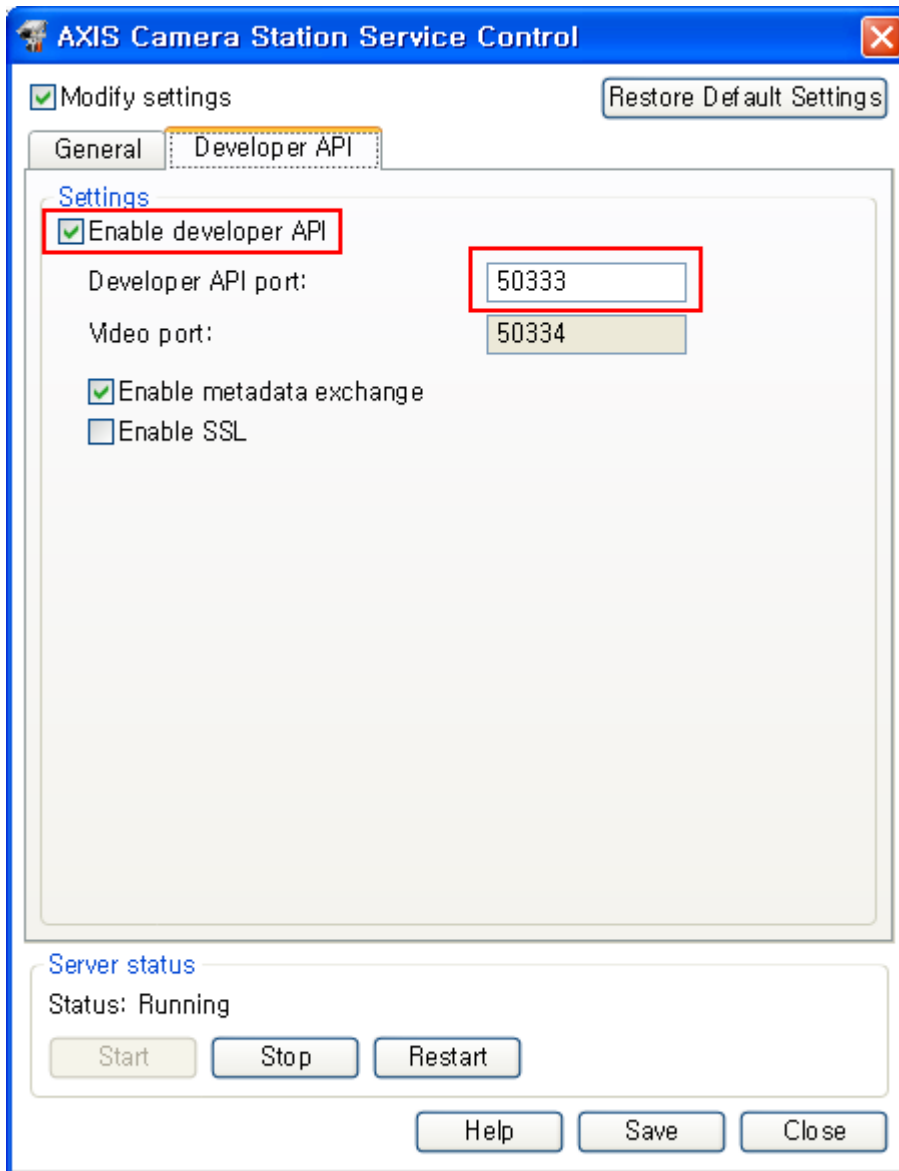
1. Install AXIS Camera Station that supports the NVR feature on your PC. You can purchase the software from AXIS distributors and resellers.
2. Install AXIS Camera Station SDK, which is included in the BioStar CD. You can find it in the **Drivers\cameraSDK\AXIS** folder. If you need the latest SDK, ask your local AXIS distributors and resellers.

Configuring AXIS Camera Station Server

1. Click on the tray icon and this will bring up the context menu. Select **Open AXIS Camera Station Service Control**.

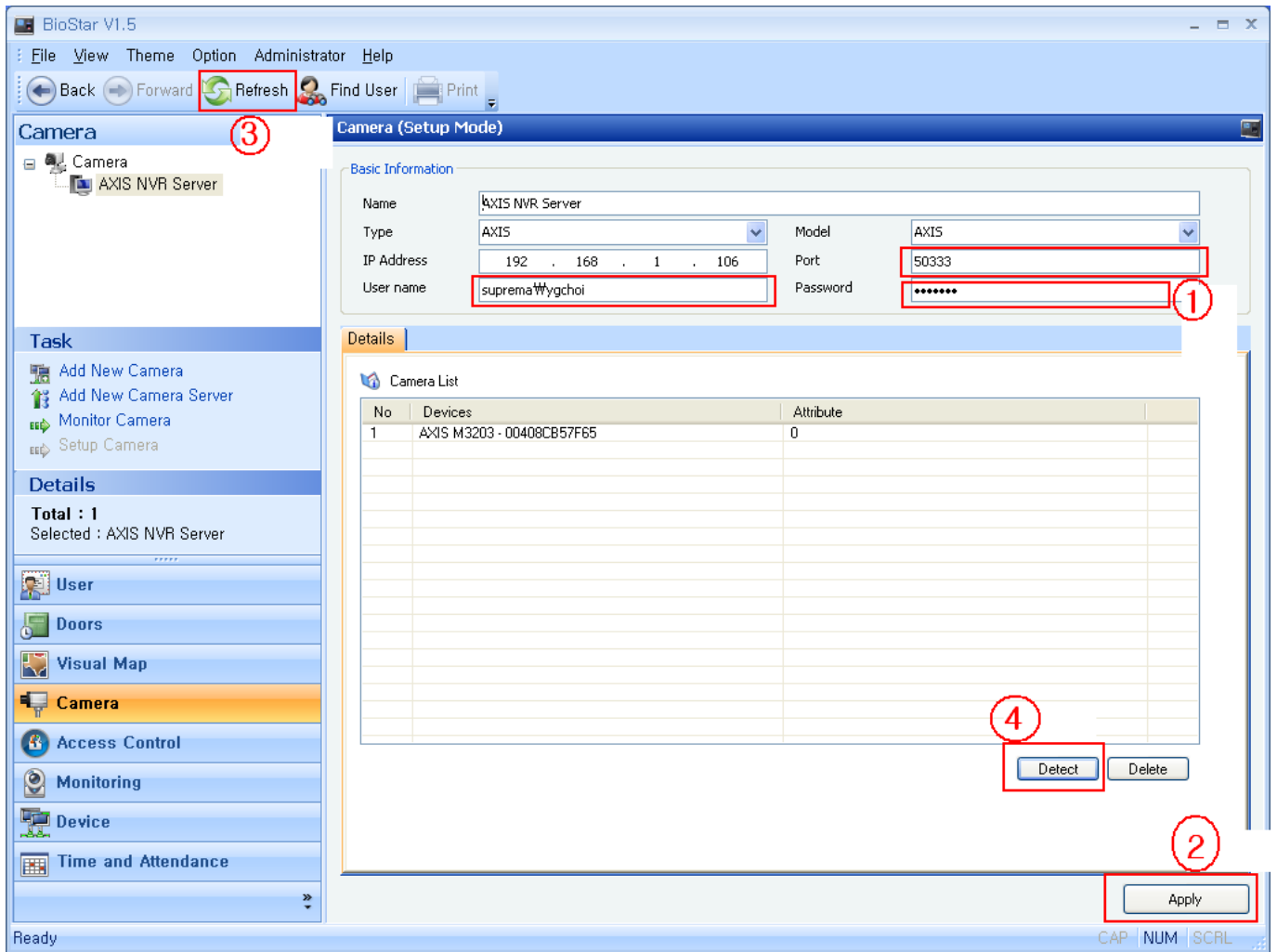


2. Click on the **Developer API** tab, select **Enable developer API** and enter **50333** for **Developer API port**.



Configuring the camera settings of BioStar Client

1. For the **Name** field, enter a name.
2. From the **Type** drop-down list, select **AXIS**.
3. From the **Model** drop-down list, select **AXIS**.
4. For the **IP Address** field, enter the IP address of the AXIS NVR.
5. For the **Port** field, enter the port number you have configured in the settings of AXIS Camera Station Server.
6. For the **User name** field, enter an AXIS NVR login ID. If you log in to the server as a current Windows user, enter the current Windows account ID.
7. Click **Apply** and then **Detect**.



How to log in to AXIS NVR

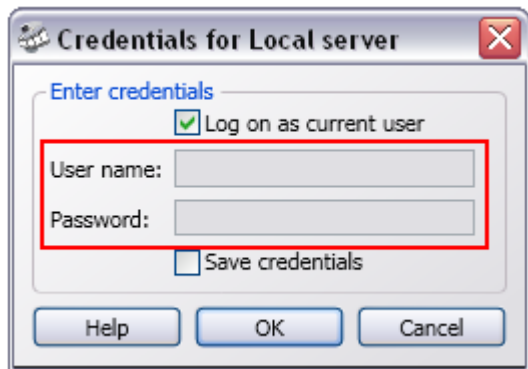
1. Run **Axis Camera Station Client**.



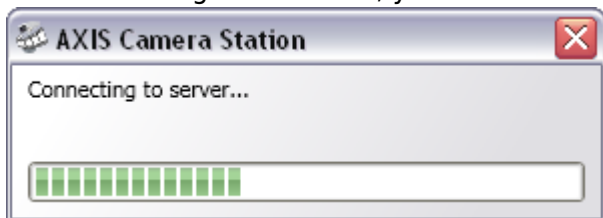
2. Choose an AXIS NVR that you want to connect to and enter the IP address.



3. Enter a user ID and password. If you select *Log on as current user*, your current Windows account will be used for authentication.



4. If the settings are correct, you will be able to log in to the server.



From: <https://kb.supremainc.com/knowledge/> -

Permanent link: https://kb.supremainc.com/knowledge/doku.php?id=en:1xfaq_how_to_connect_axis_nvr_with_biostar

Last update: **2015/10/12 13:22**