

# Table of Contents

How to connect Secure IO to BioStation T2 ..... 1

Wiring ..... 1

Adding Secure IO in BioStar ..... 2

BioStar 1, Secure I/O, BioStation T2

# How to connect Secure IO to BioStation T2

## Wiring

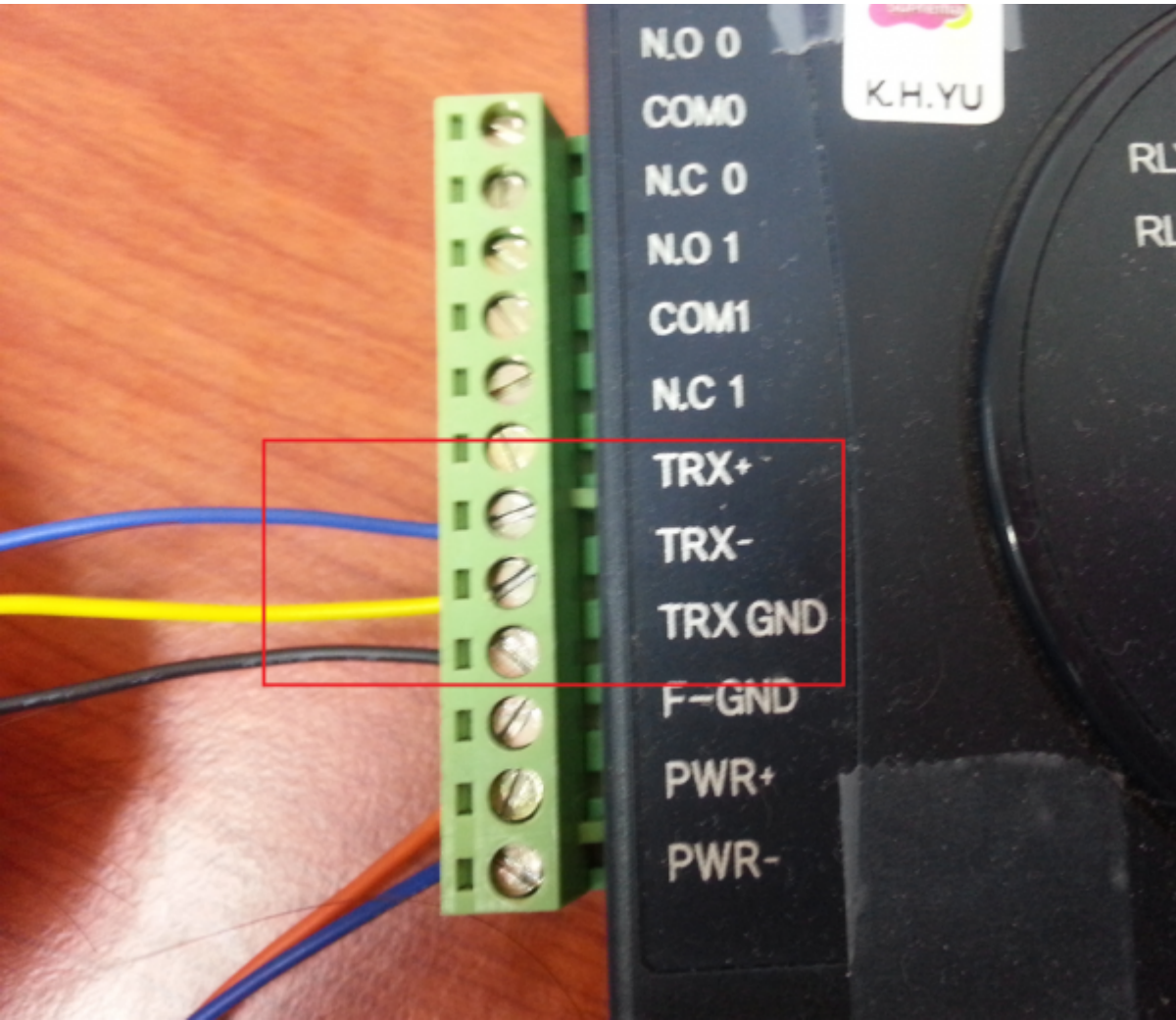
BioStation T2 uses a 4-pin connector for RS485 Cable.

### ■ RS485 CABLE (4-pin Connector)

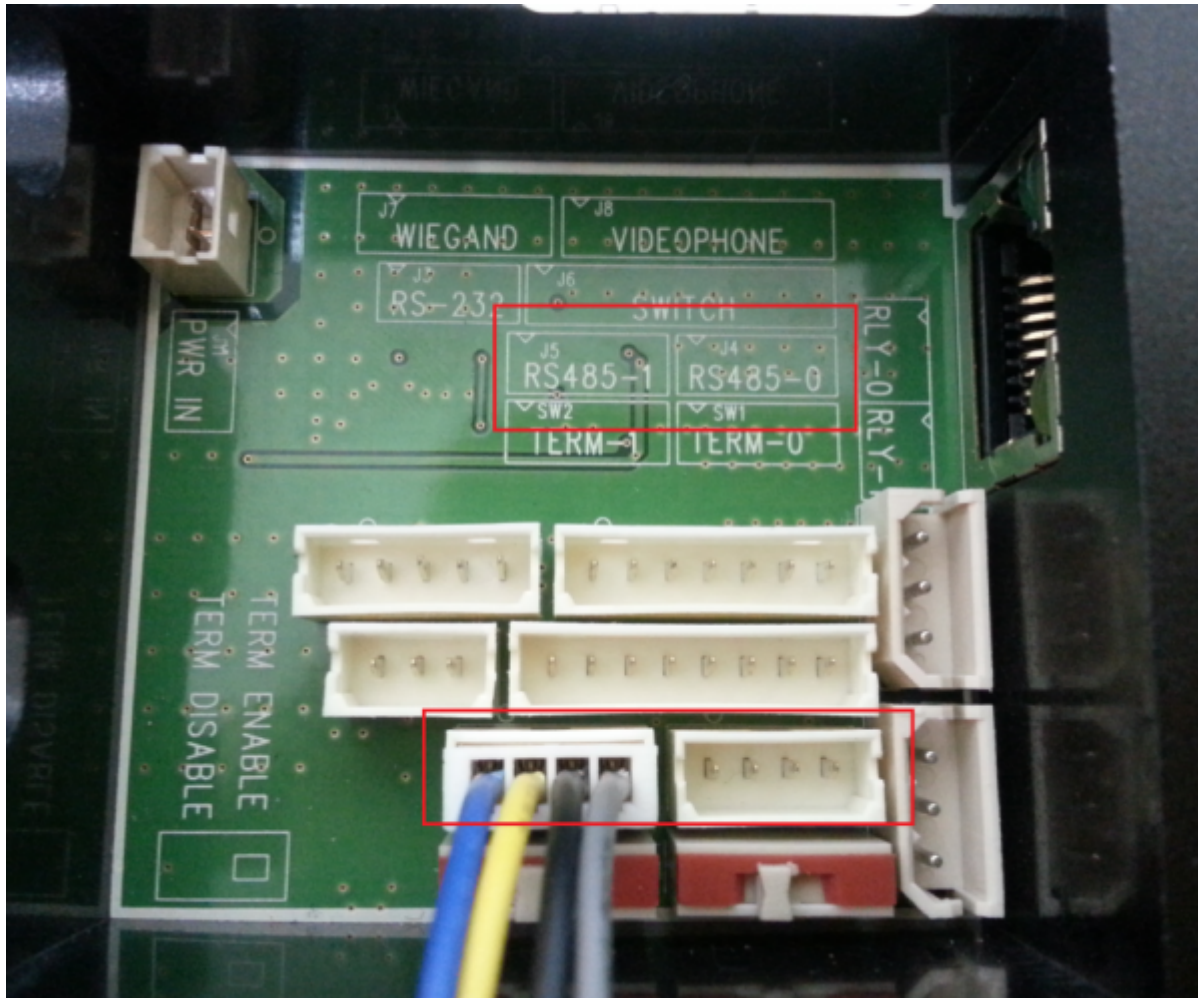
Pin	Name	Cable Type	Color
1	RS485 TRX+	AWG26	BLUE
2	RS485 TRX-		YELLOW
3	GND		BLACK
4	SHIELD GND		GRAY



1. Secure IO Wiring  
Connect TRX+ (blue) to TRX+ pin, TRX- (yellow) to TRX- pin, GND (black) to TRX GND pin as shown below.



2. BioStation T2 Wiring RS485 cable should be connected to “RS485-1”.

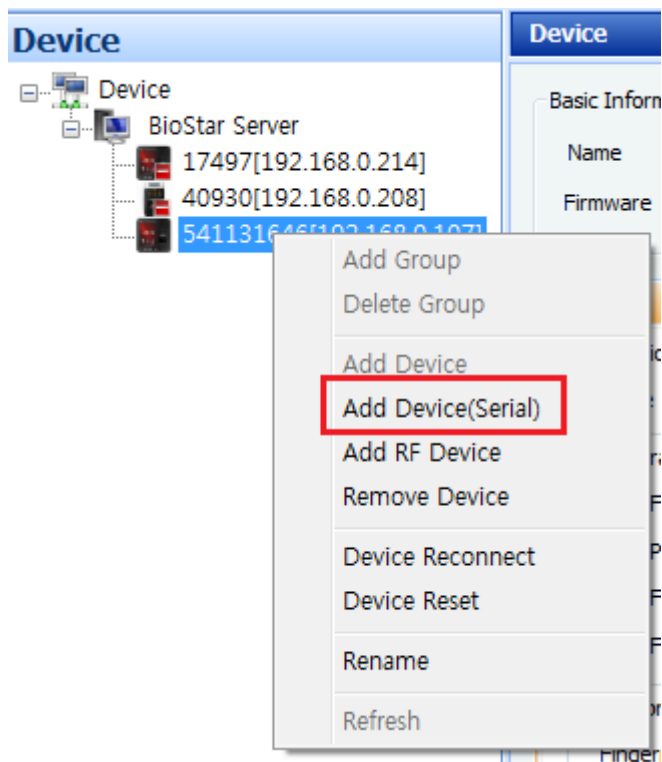


3. When the device and Secure I/O are all wired correctly, press “SYNC” on your Secure I/O. When successfully synced, the device will make a ‘ding-dong-dang’ sound.

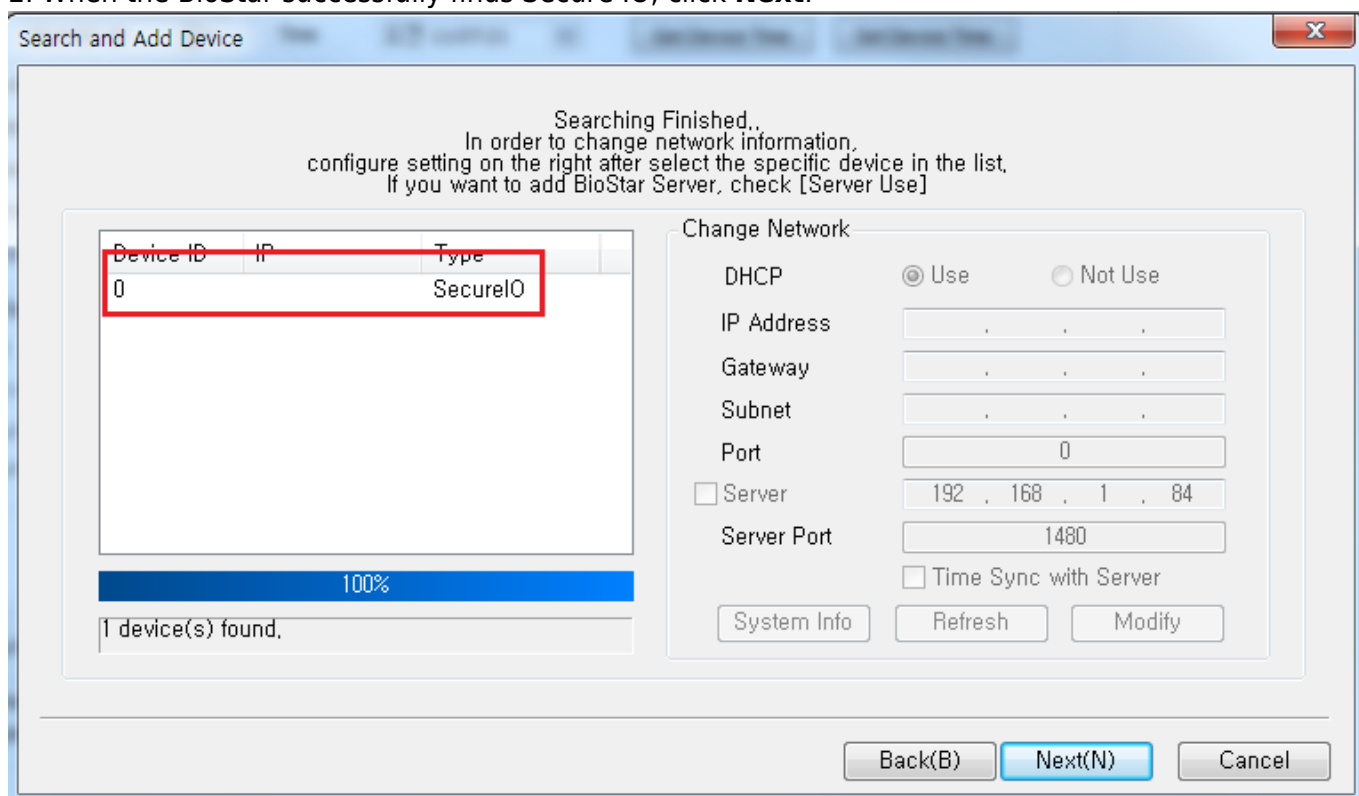
Always check if you have used correct cable. BioStation and BioStation T2 use a different 4-pin connector.

## Adding Secure IO in BioStar

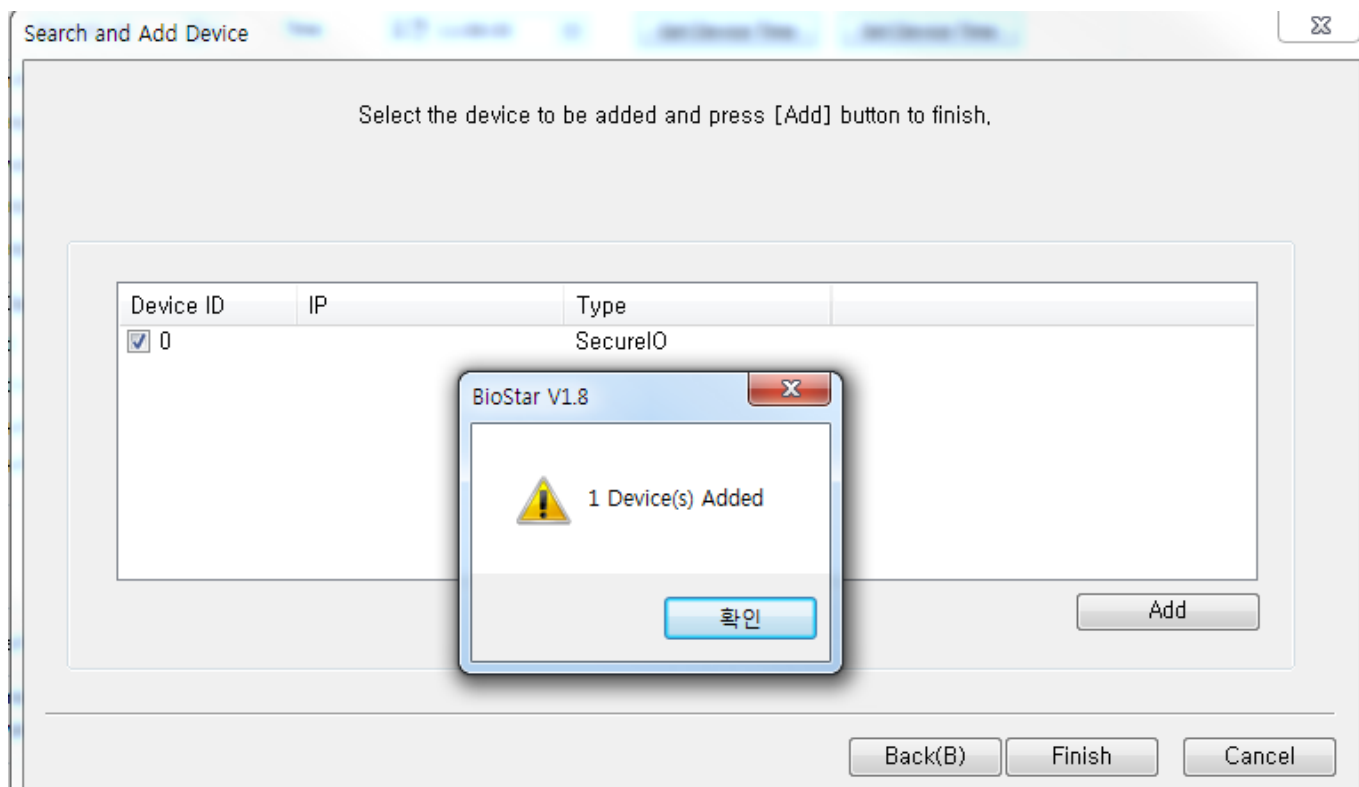
1. Go to **Device**, right click the BioStation T2 device then click **Add Device (Serial)**.



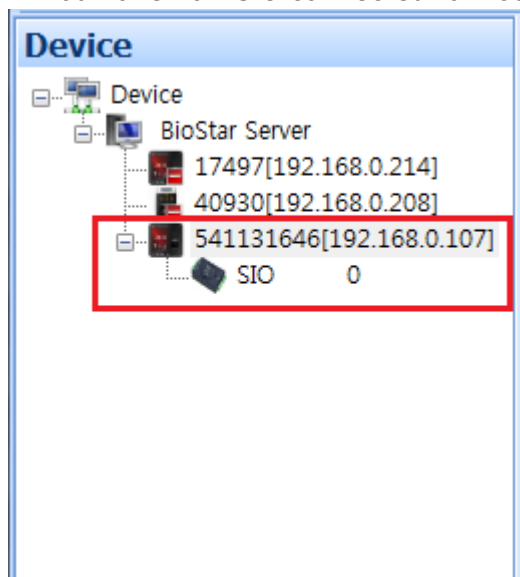
2. When the BioStar successfully finds Secure IO, click **Next**.



3. Click **Add** then **Finish**.



4. You have now SIO connected to BioStation T2.



From:

<https://kb.supremainc.com/knowledge/> -

Permanent link:

[https://kb.supremainc.com/knowledge/doku.php?id=en:1xfaq\\_how\\_to\\_connect\\_secure\\_io\\_to\\_biostation\\_t2](https://kb.supremainc.com/knowledge/doku.php?id=en:1xfaq_how_to_connect_secure_io_to_biostation_t2)

Last update: **2019/12/30 13:09**