

Table of Contents

How to create an Access Group 1

BioStar 1, Access Group

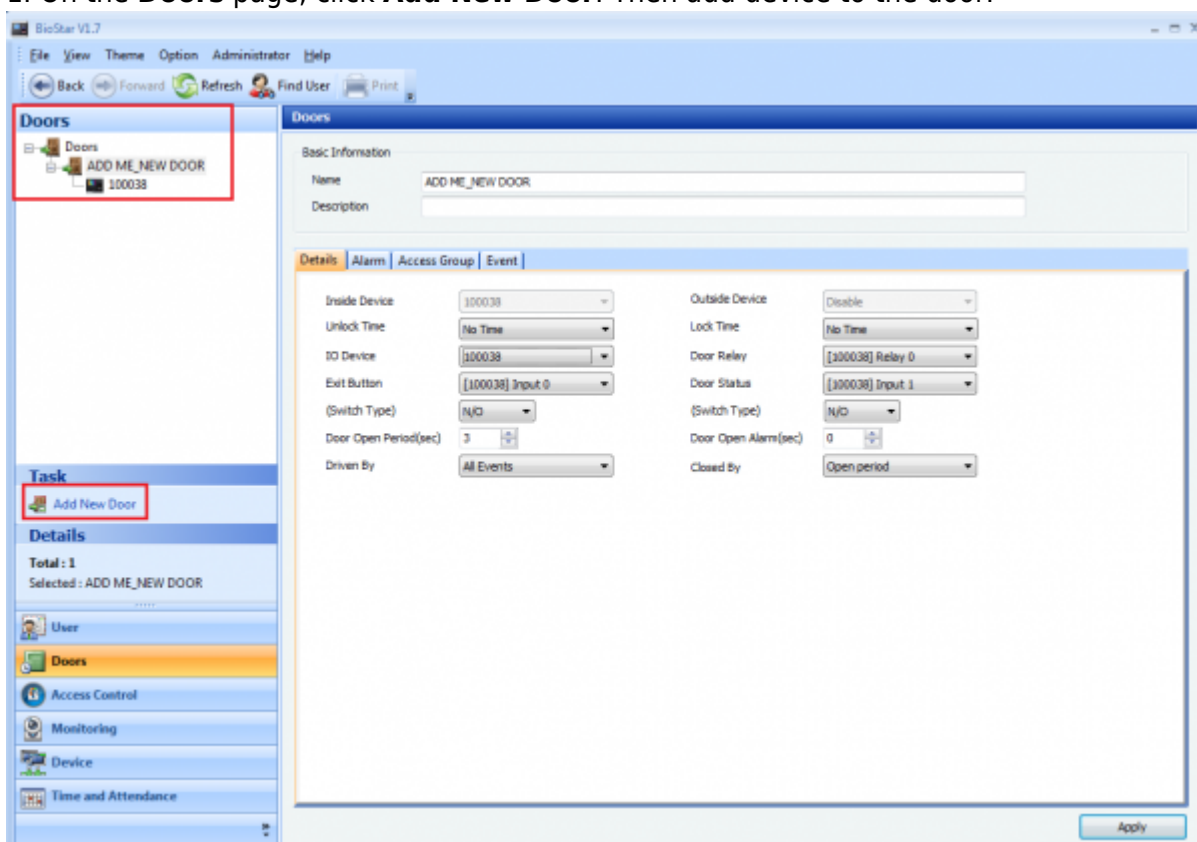
How to create an Access Group

BioStar allows administrators to build custom access groups by combining permissions for timezones and doors. With this capability, BioStar provides customizable, scheduled access control.

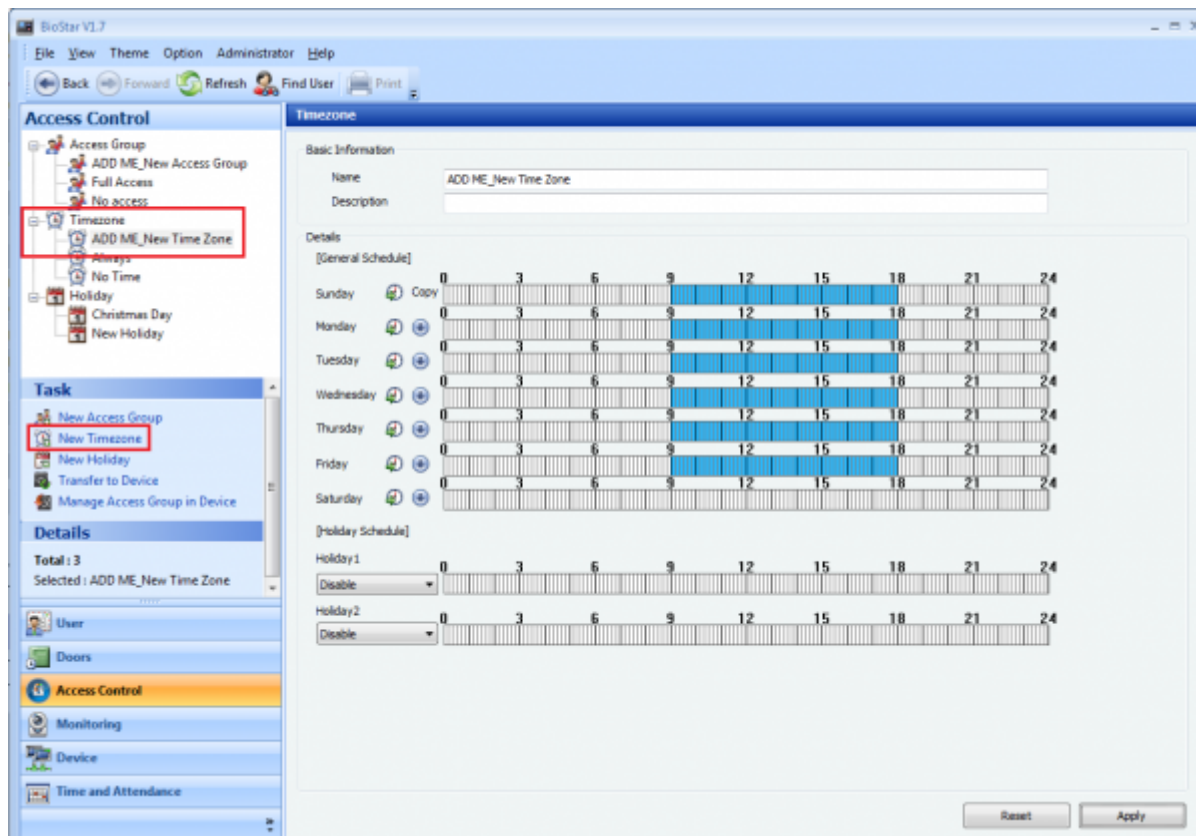
BioStar supports up to 128 timezones that consist of a seven day schedule, plus two holiday schedules. Each day in a timezone can include as many as five distinct time periods. Each access group can have upto 32 readers and each user can be assigned upto 4 access groups.

You can create an access group by performing the following steps:

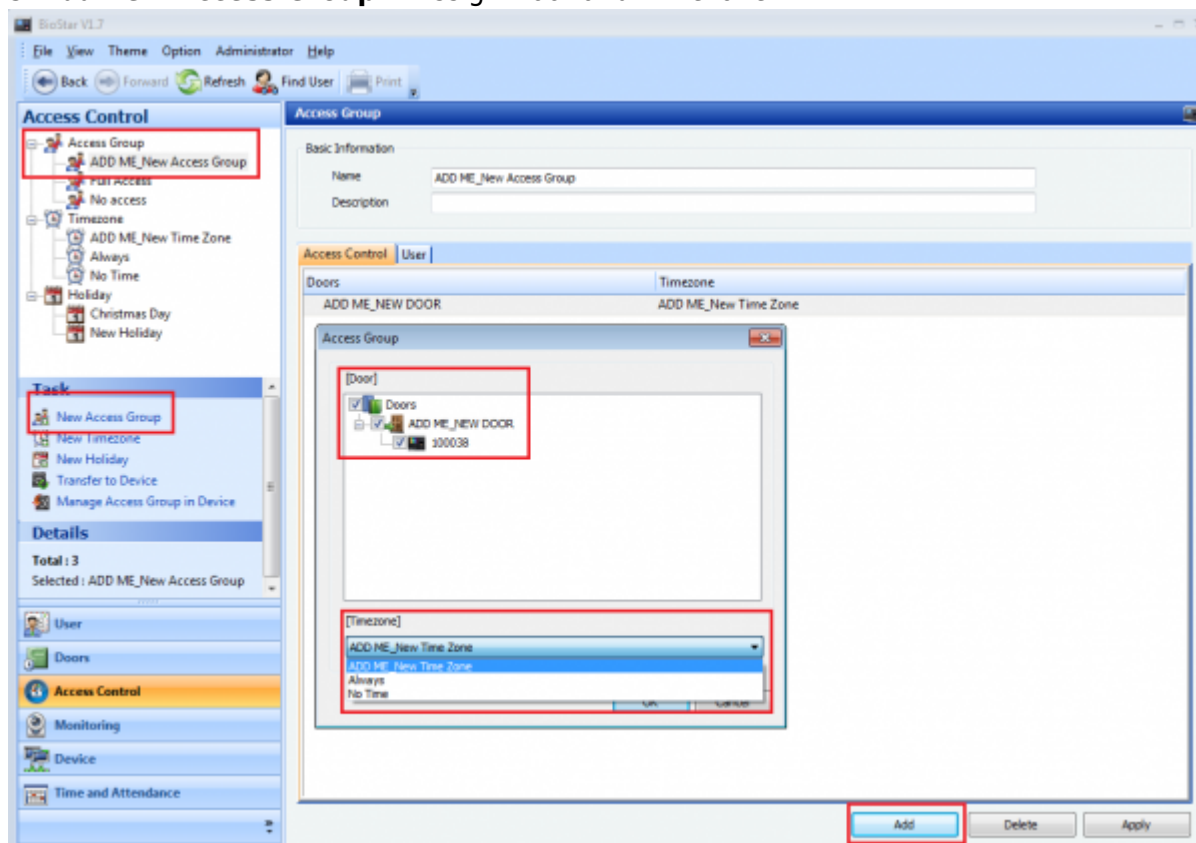
1. On the **Doors** page, click **Add New Door**. Then add device to the door.



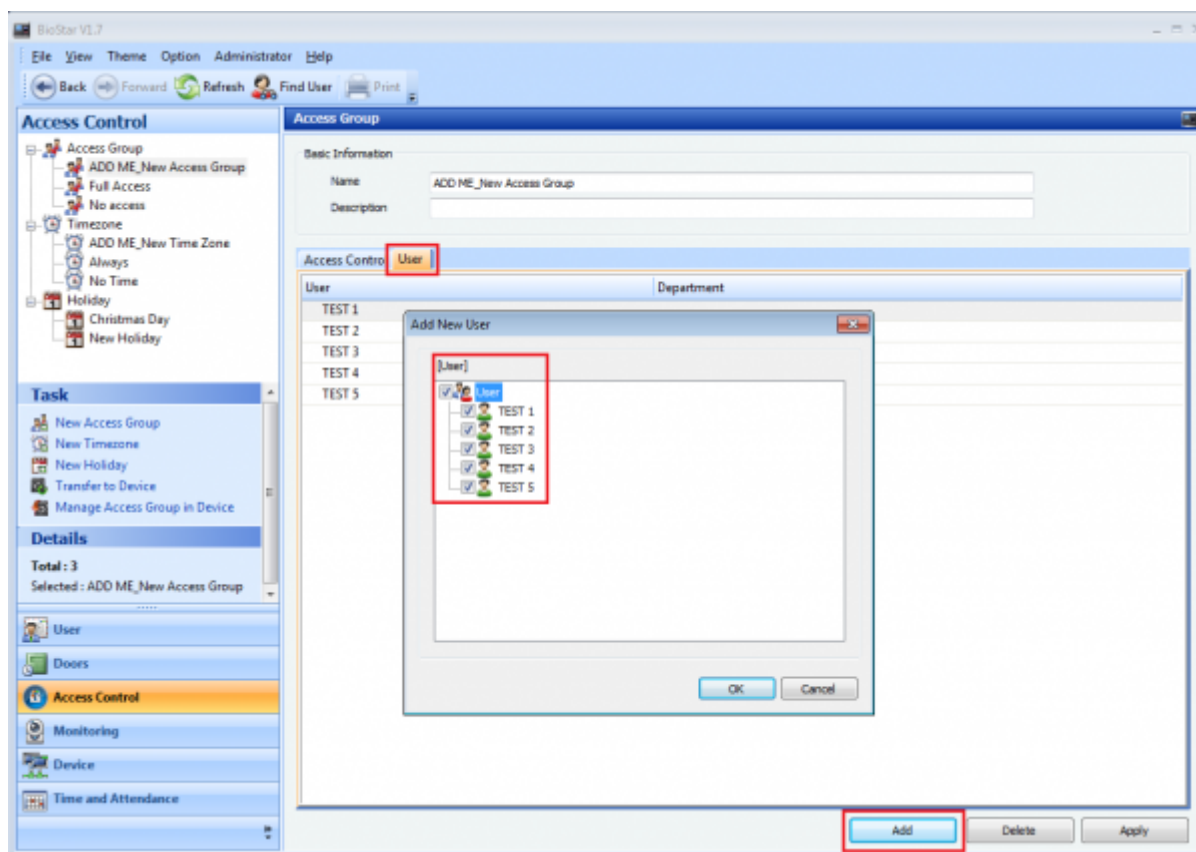
2. On the **Access Control** page, click **Add New Timezone**.



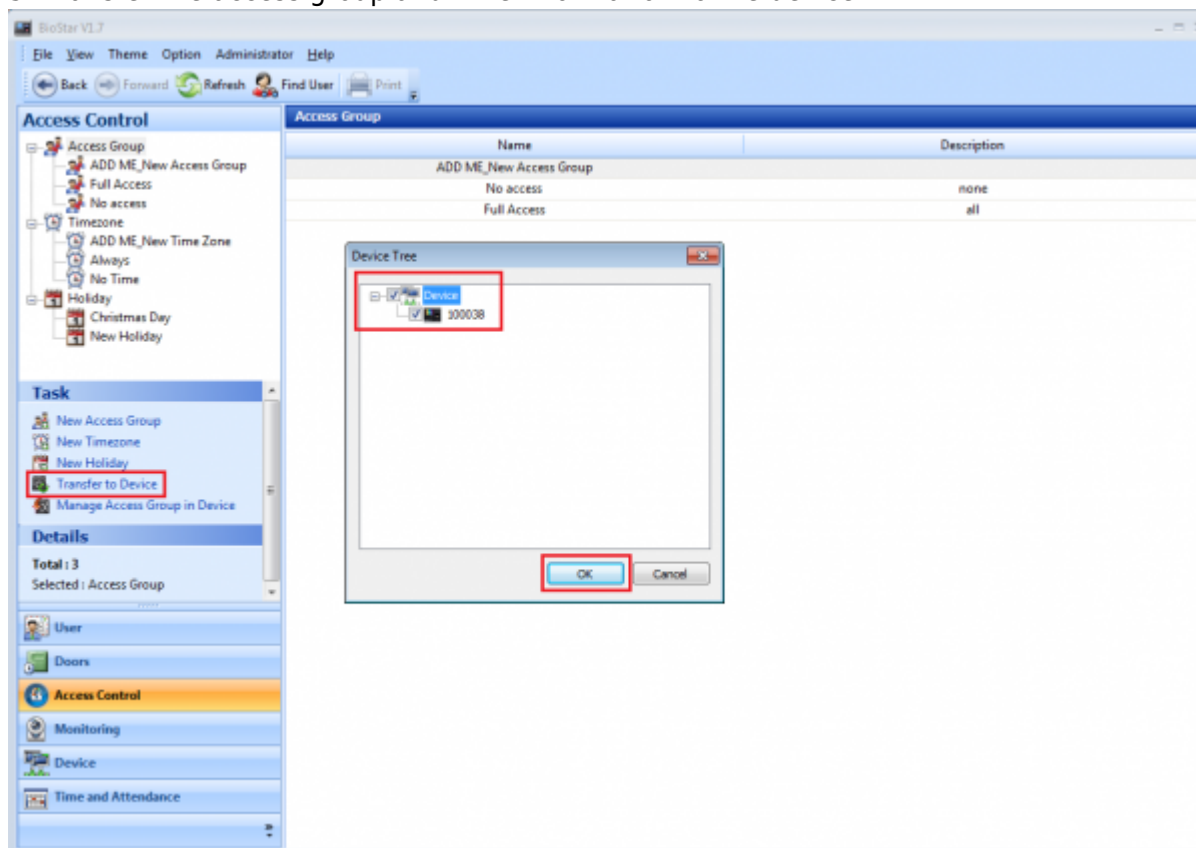
3. Add **New Access Group** → Assign Door and Timezone.



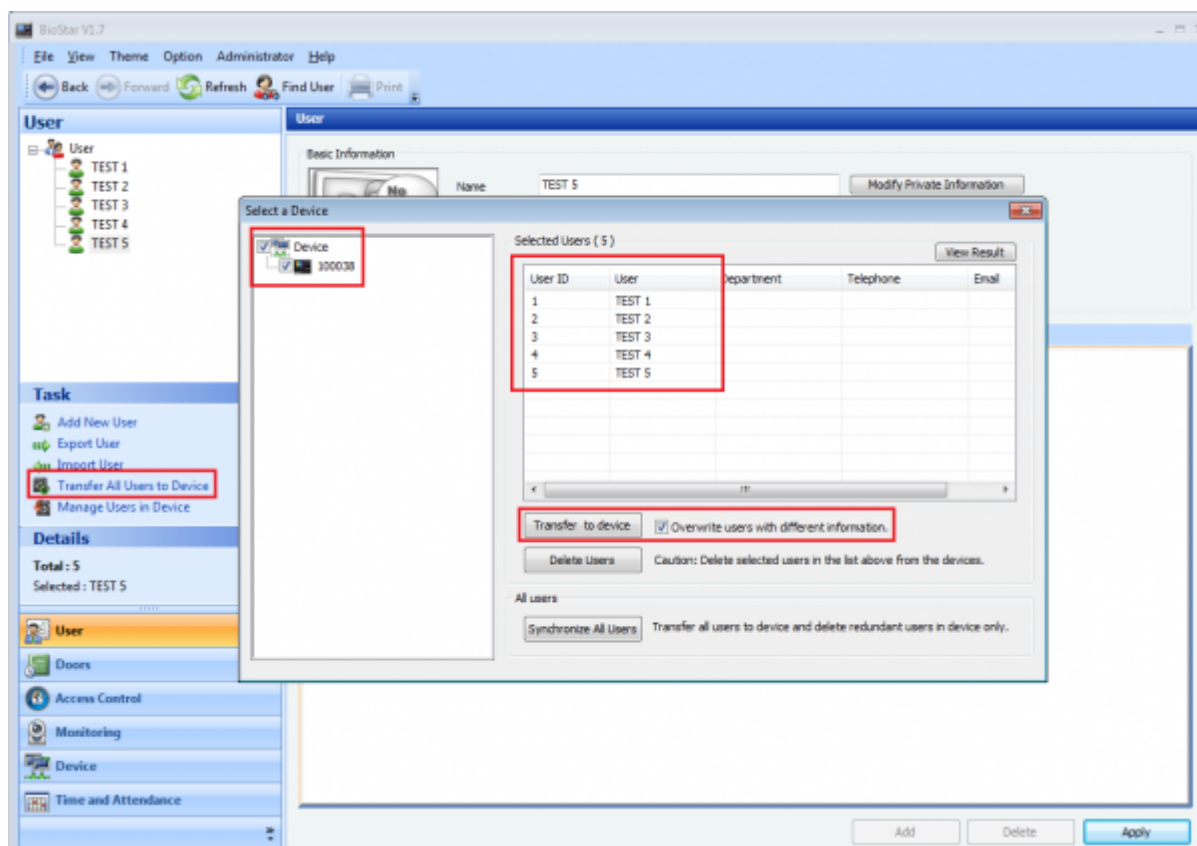
4. Assign Users in the Access Group.



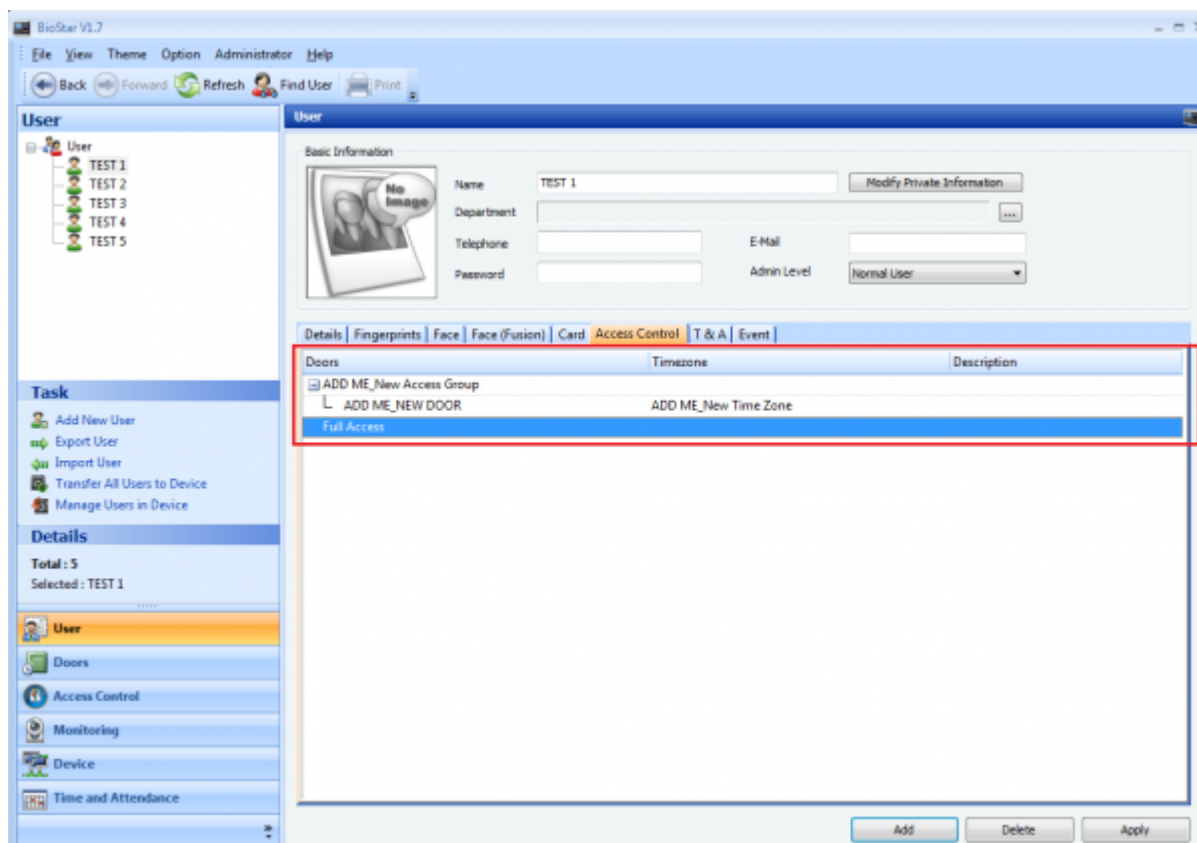
5. Transfer the access group and time information to the device.



6. Transfer the modified user to the device from **User** → **Transfer All Users to Device**. Select the **Overwrite users with different information** option when you transfer.



- All users are assigned as "Full Access" as a default. To assign a new access group, you need to remove/delete the user from "Full Access" group.



From:
<http://kb.supremainc.com/knowledge/> -

Permanent link:
http://kb.supremainc.com/knowledge/doku.php?id=en:1xfaq_how_to_create_an_access_group&rev=1444191655

Last update: **2015/10/07 13:20**