

Table of Contents

How to set up a fire alarm zone 1

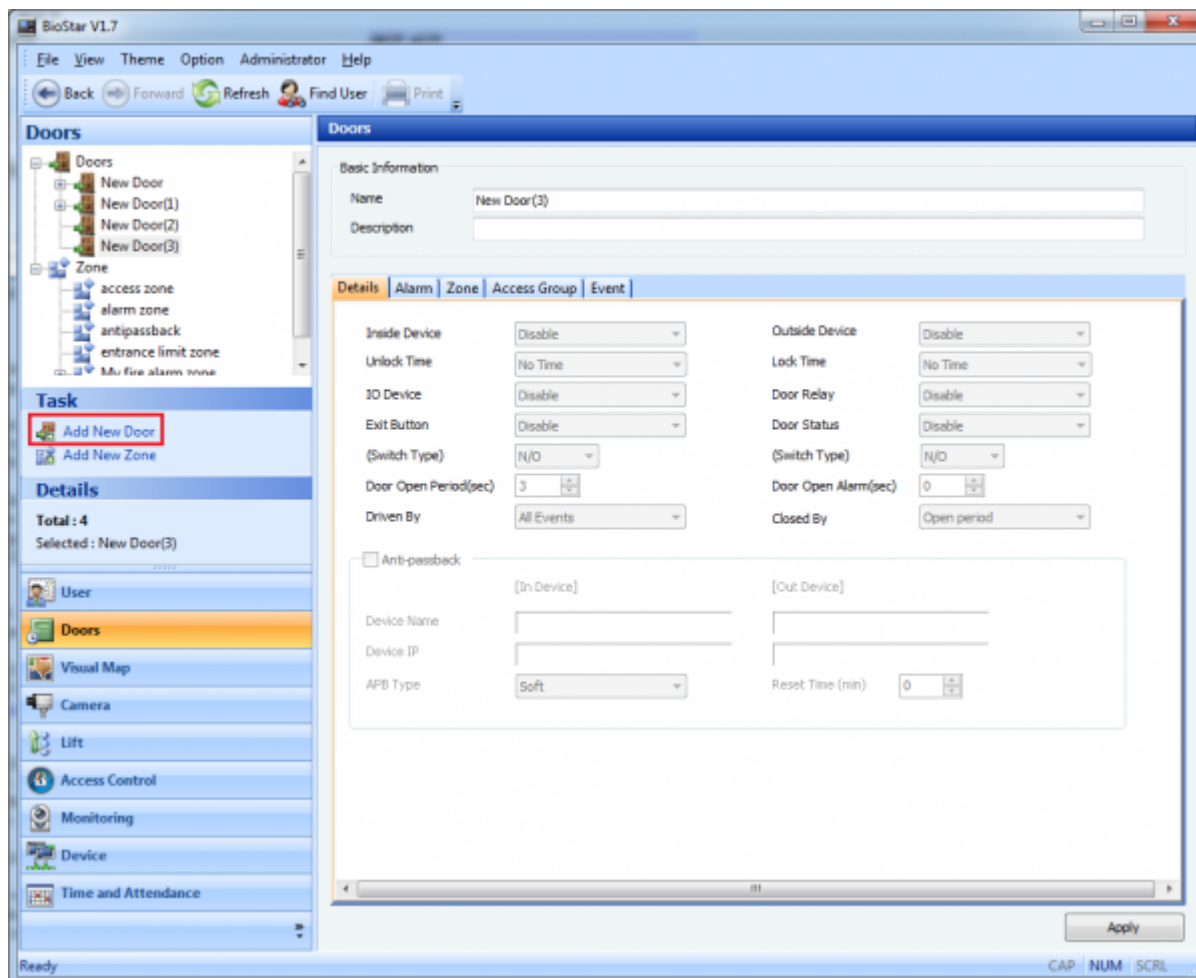
BioStar 1, Fire Alarm, Zone

How to set up a fire alarm zone

All the devices that are in a fire alarm zone will automatically open their doors when the fire alarm sets off. The alarm is detected through an input port set in the configuration of the zone.

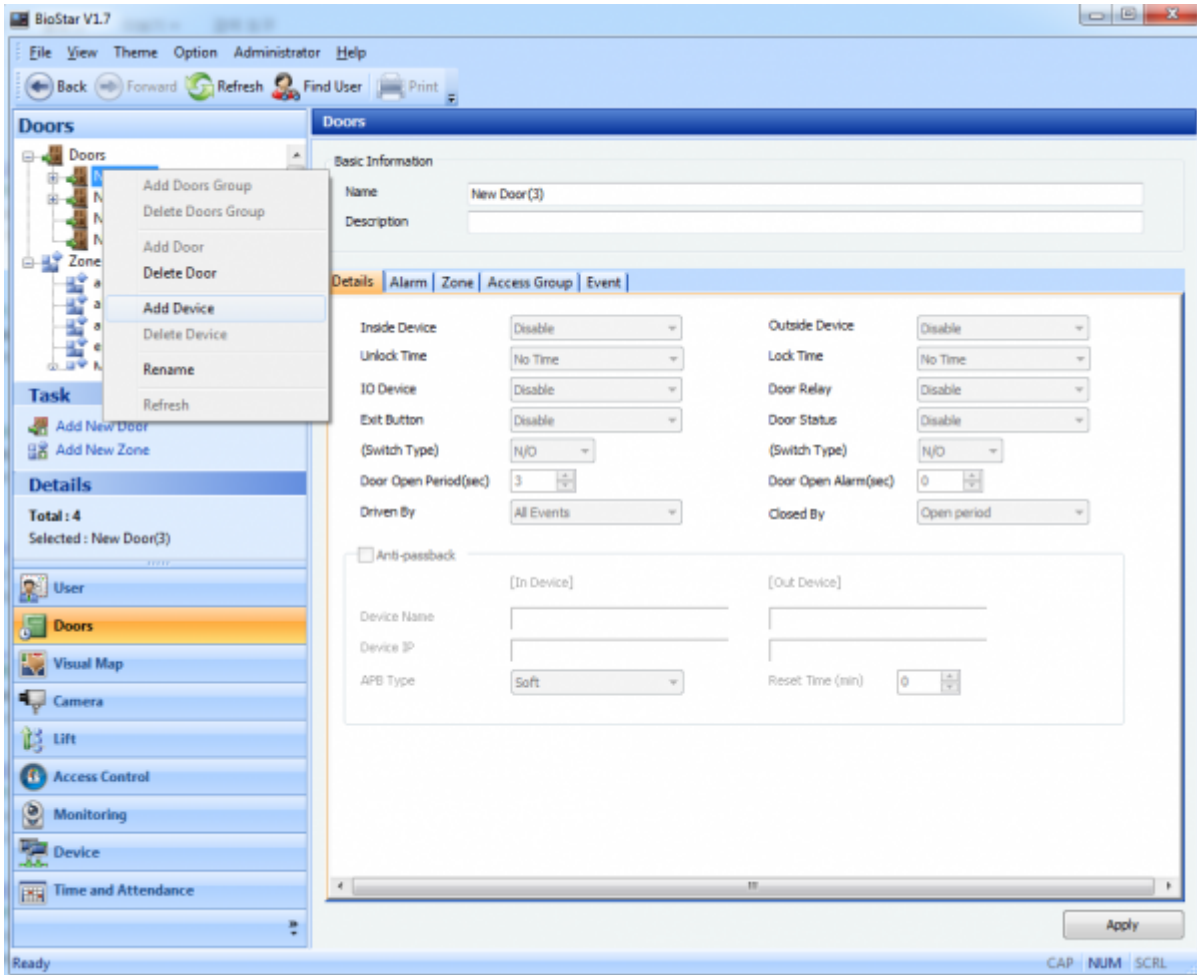
You can set up a fire alarm zone by performing the following steps:

1. On the **Doors** page, click **Add New Door**.

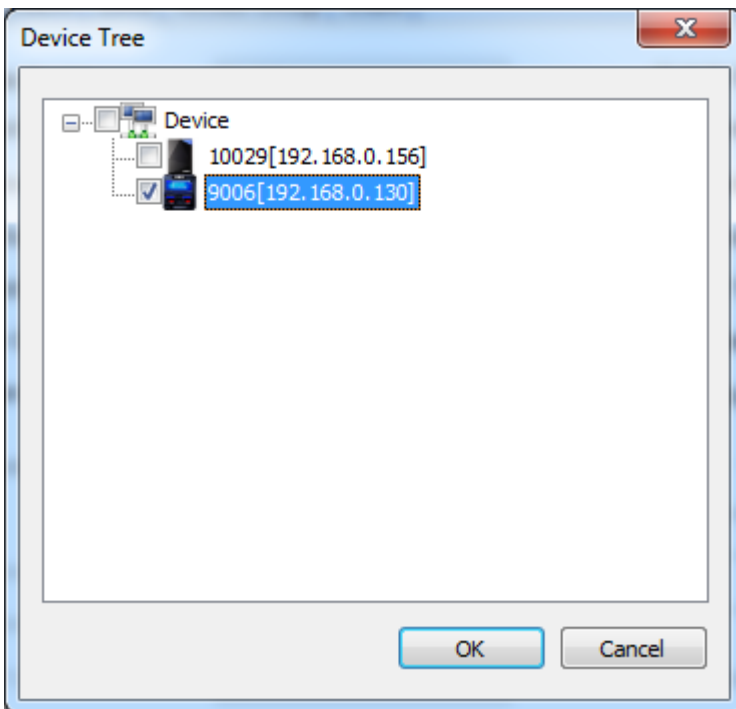


2. If devices are connected via the Ethernet, assign one device to one door. For example, if you have two devices, you need to make four doors and assign each device to each door. If devices are connected via RS485, you can assign up to two doors to one door.

- 1) Right-click a door and choose **Add Device**.

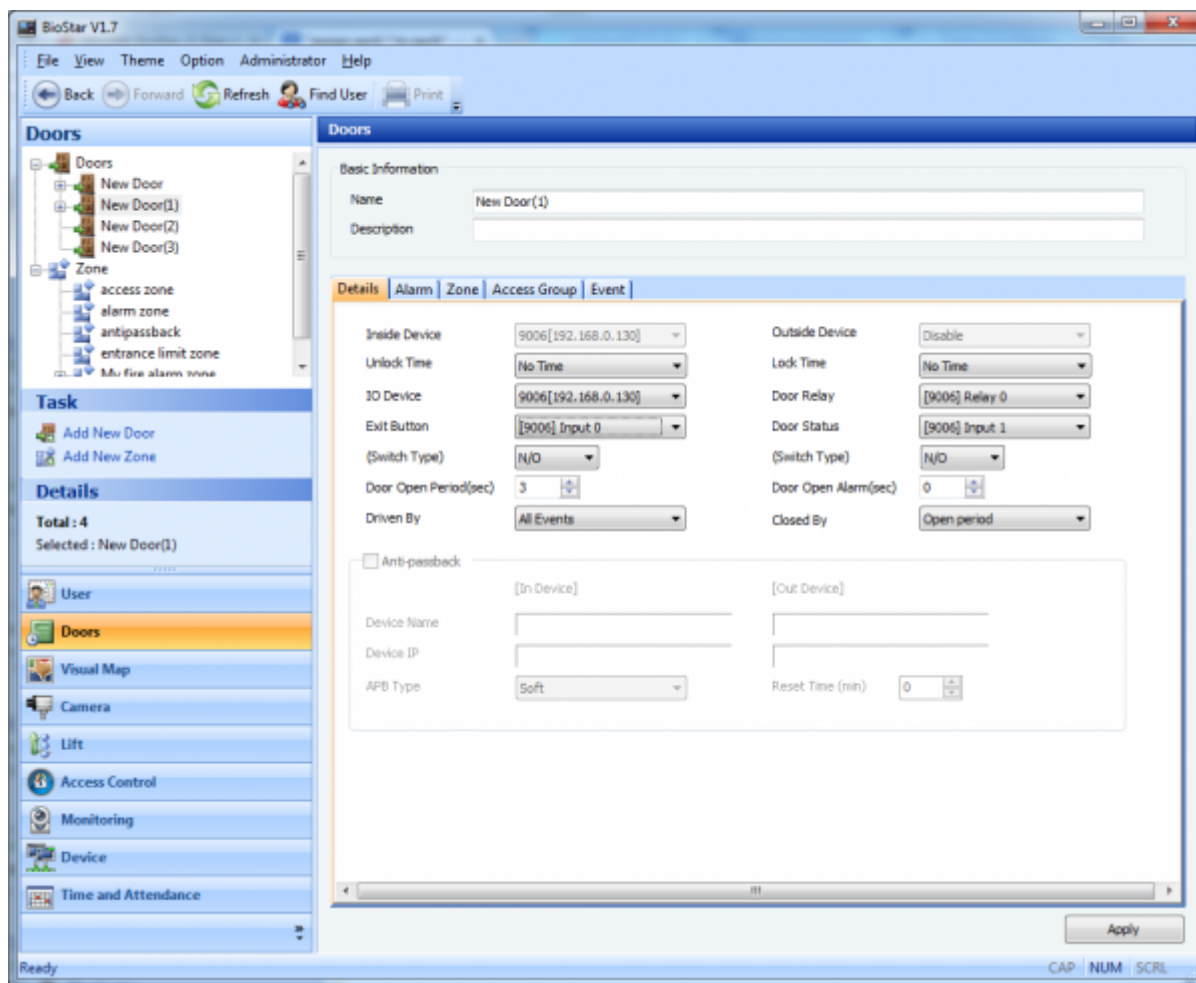


2) Choose one of the devices you want to add on the **Device Tree** dialog and click **OK**.

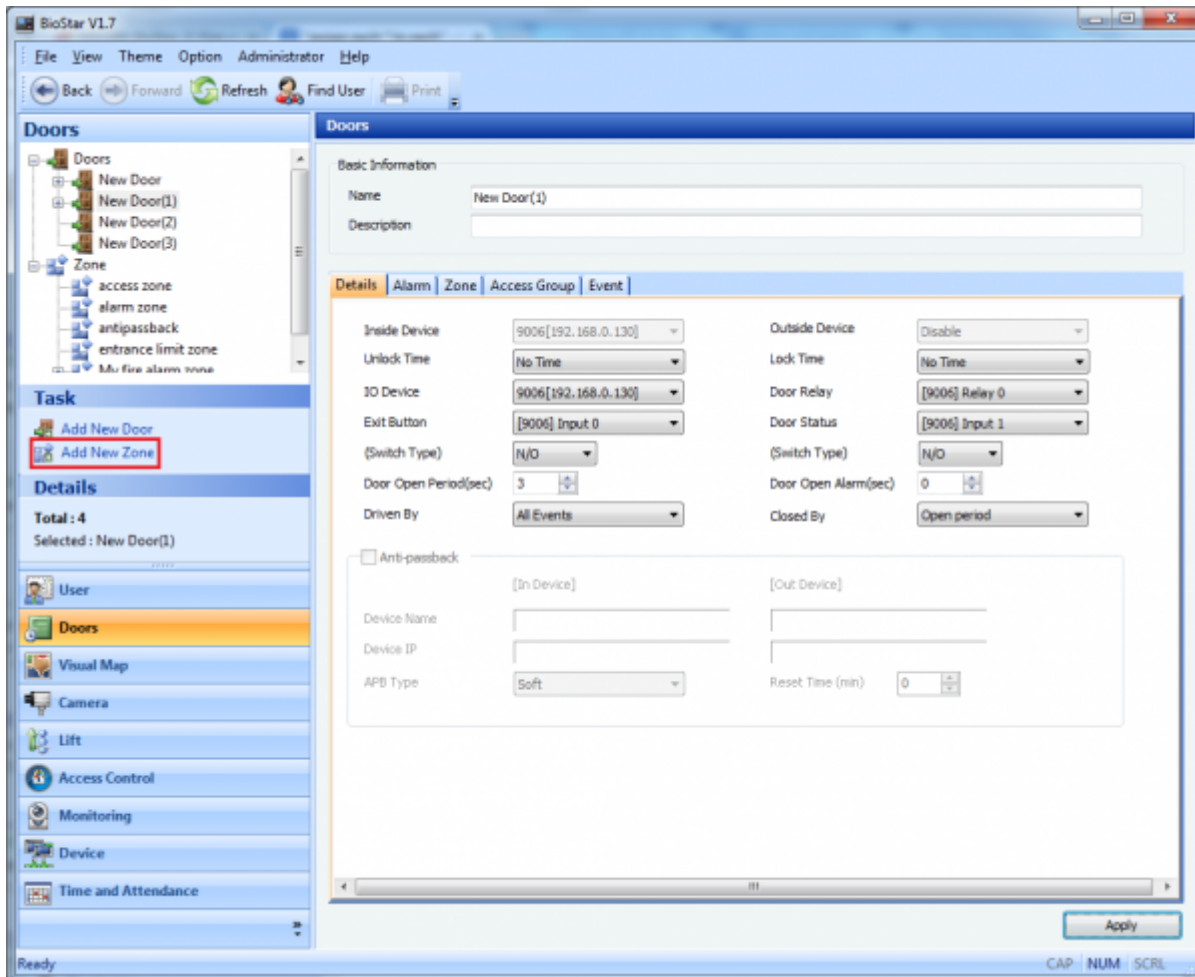


3. You need to be very careful about the settings of the door. When an input for fire alarm trigger is assigned for **Exit Button** or **Door Status**, then the input for fire alarm trigger will be overridden by the settings of the door. For example, when **Input 0** and **Input 1** are already assigned to **Exit**

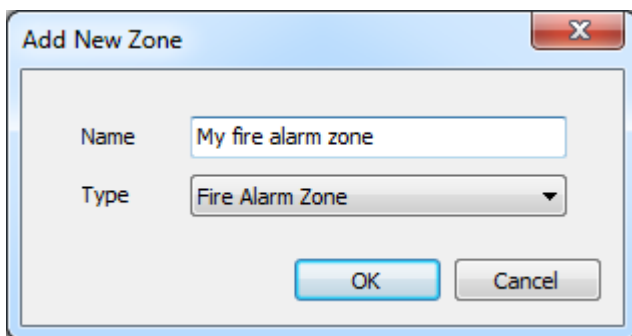
Button and **Door Status** as shown in the figure below, you should use a different input (such as Input 2 or 3) for fire alarm trigger.



4. click **Add New Zone**.

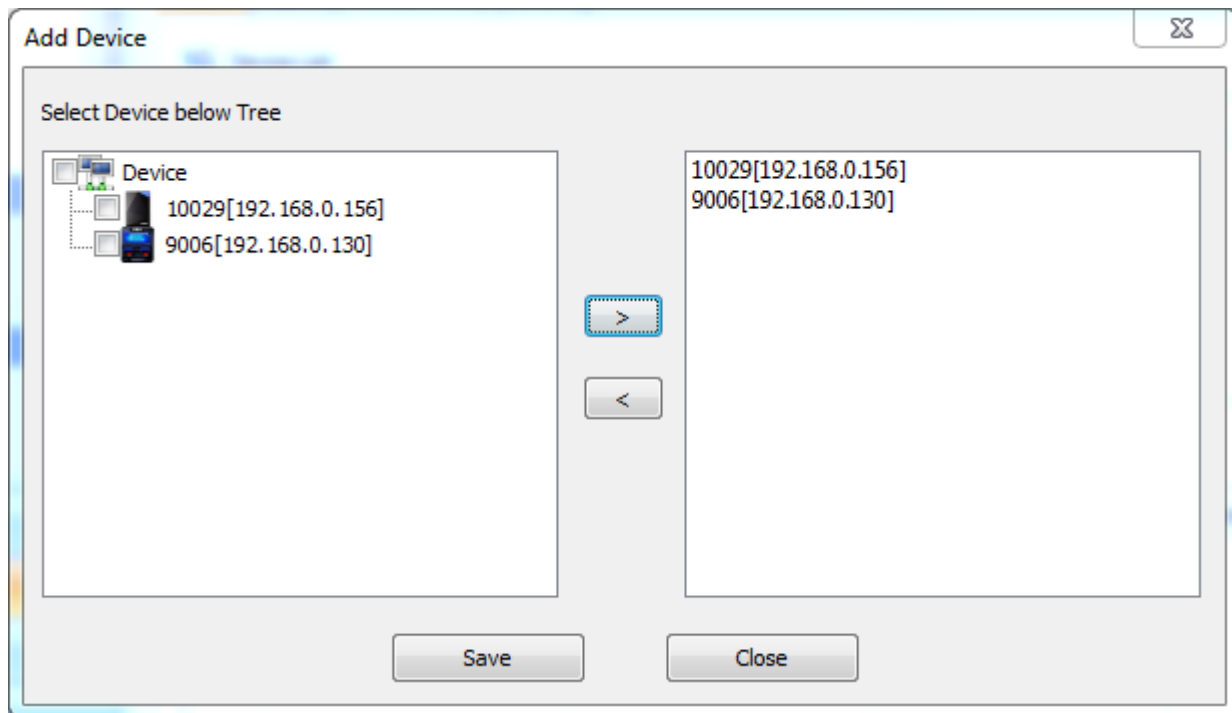


5. Enter a name for the fire alarm zone and choose Fire Alarm Zone from the Type drop-down list.

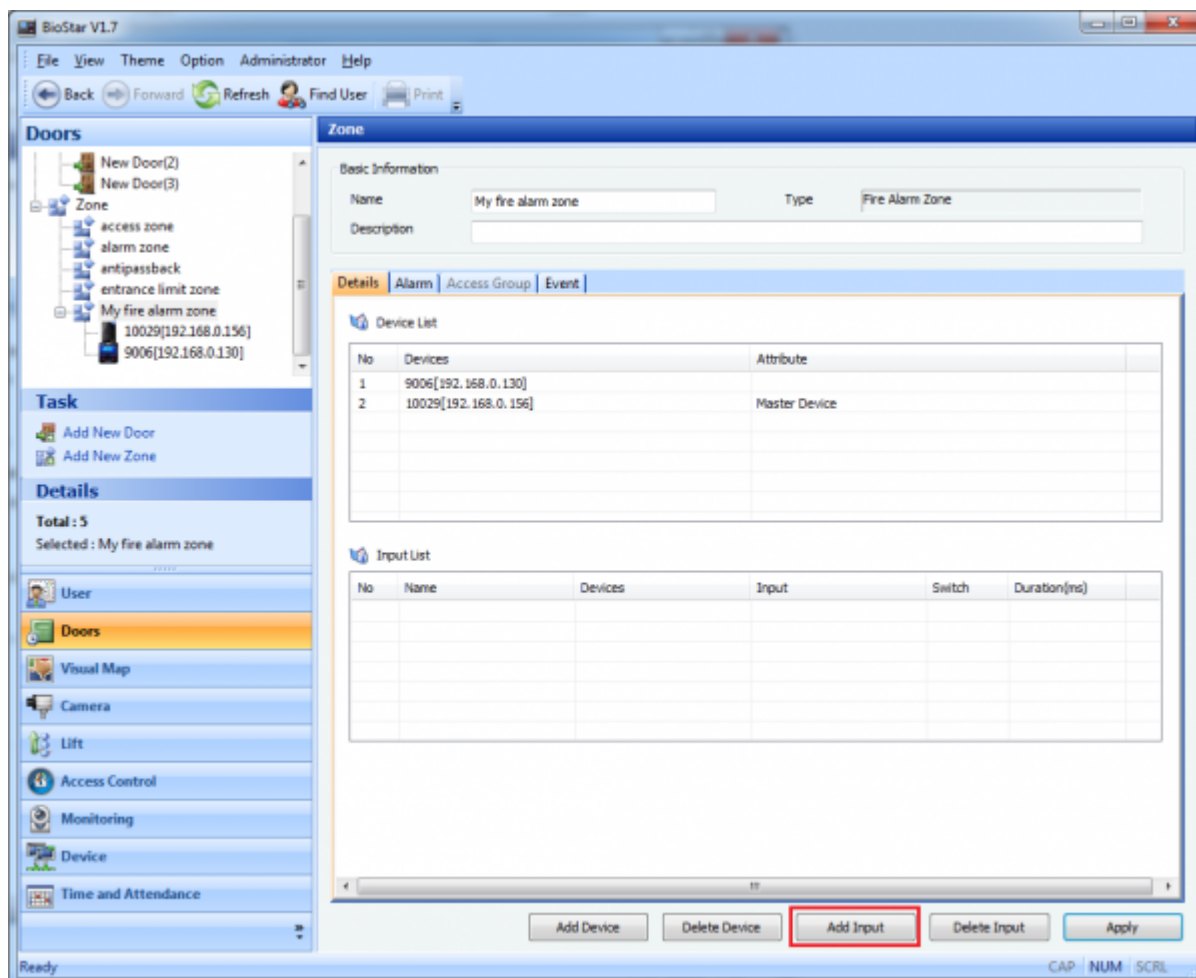


6. Click **Add Device** to add devices to the zone. This brings up the **Add Device** dialog.

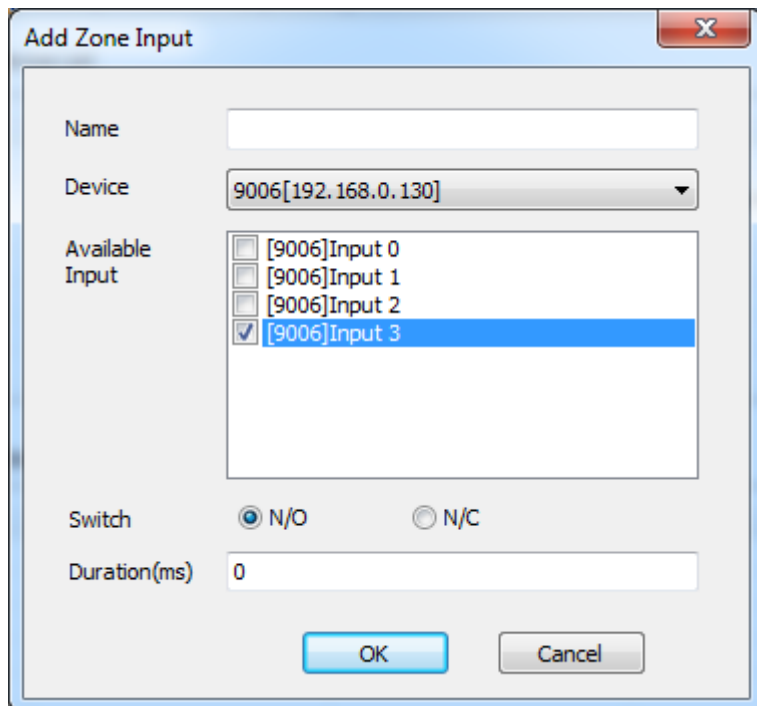
7. Choose devices you want to add and click the right arrow button and then the **Save** button. One of the devices will be automatically selected as **Master Device**.



8. Click **Add Input** to determine the input type for the zone. The input specified here will be used to set off the fire alarm.



9. Configure the settings and click **OK**. In this example, we use **Input 3** for the fire alarm trigger since we've already used **Input 0** and **1** for other purposes.



Add Zone Input

Name:

Device: 9006[192.168.0.130]

Available Input:

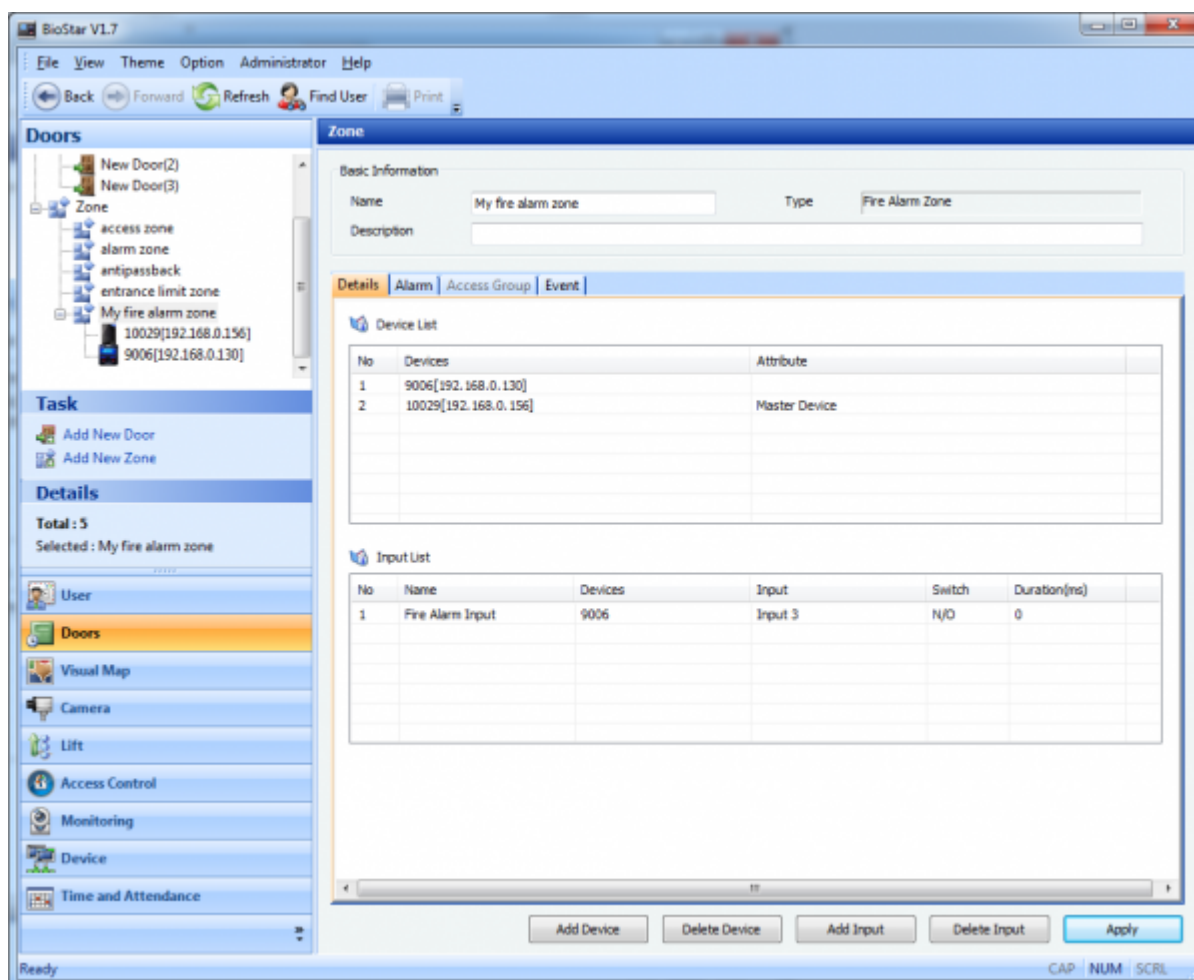
- ☐ [9006]Input 0
- ☐ [9006]Input 1
- ☐ [9006]Input 2
- ☒ [9006]Input 3

Switch: ☒ N/O ☐ N/C

Duration(ms):

OK Cancel

10. Click **Apply** to transfer the settings to the devices.



BioStar V1.7

File View Theme Option Administrator Help

Back Forward Refresh Find User Print

Doors

- New Door(2)
- New Door(3)
- Zone
 - access zone
 - alarm zone
 - antipassback
 - entrance limit zone
 - My fire alarm zone
 - 10029[192.168.0.156]
 - 9006[192.168.0.130]

Task

- Add New Door
- Add New Zone

Details

Total: 5
Selected: My fire alarm zone

User

Doors

Visual Map

Camera

Lift

Access Control

Monitoring

Device

Time and Attendance

Zone

Basic Information

Name: My fire alarm zone Type: Fire Alarm Zone

Description:

Details Alarm Access Group Event

Device List

No	Devices	Attribute
1	9006[192.168.0.130]	
2	10029[192.168.0.156]	Master Device

Input List

No	Name	Devices	Input	Switch	Duration(ms)
1	Fire Alarm Input	9006	Input 3	N/O	0

Add Device Delete Device Add Input Delete Input Apply

Ready CAP NUM SCRL

When you release the fire alarm, all the doors will not close at once.

In the **Monitoring** menu you will have to check the status of each door and set it back to normal to close the doors.

From:

<https://kb.supremainc.com/knowledge/> -

Permanent link:

https://kb.supremainc.com/knowledge/doku.php?id=en:1xfaq_how_to_set_up_a_fire_alarm_zone

Last update: **2019/12/31 13:48**