

## Table of Contents

How to migrate DB logs from BioStar 1.x to BioStar 2 .....	1
Limitations .....	1
Preparations .....	1
Migrating logs from BioStar 1.x DB to BioStar 2 DB .....	2

## How to migrate DB logs from BioStar 1.x to BioStar 2

This document will guide you through the process of how to migrate logs from BioStar 1.x to BioStar 2 using the DB migration tool. Please carefully read and follow the instructions.

If you use BioStar 2 2.3, please proceed with migration in the following order.  
BioStar 1.x → BioStar 2.2 → BioStar 2.3

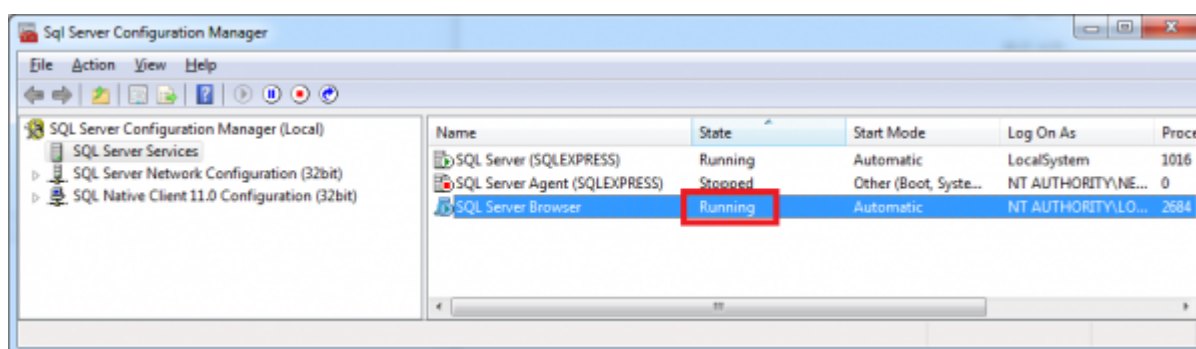
Please note that this migration way is able to available up to BioStar 2.3. If the upper version of BioStar 2.3, please refer to the following link: [Freshdesk FAQ](#)

### Limitations

- This migration tool currently does not support migration to Oracle DB.
- For BioStar 1.x DB, only authentication logs are transferrable.

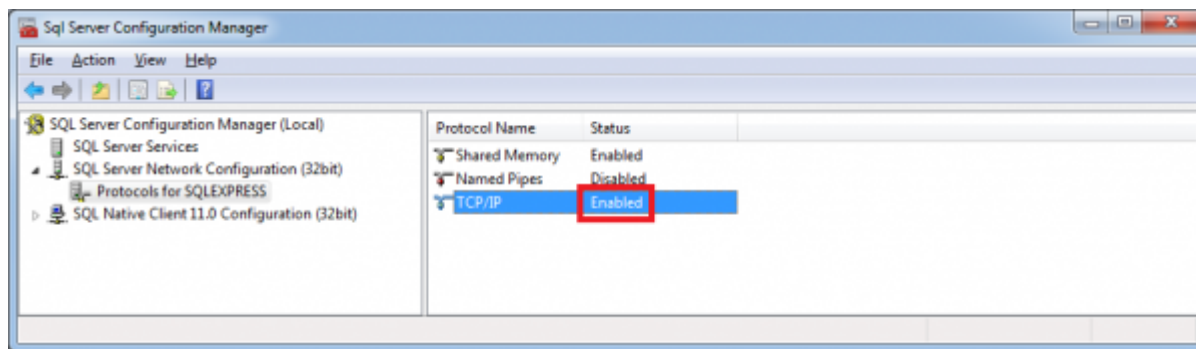
### Preparations

1. The authentication for the **SQL Server** must be done as **SQL Server Authentication**. **Windows Authentication** is not supported. Login ID and PW is required in the later instruction. If you don't know how to create a SQL server authentication login ID, please refer to [How to create a SQL server authentication login ID](#) document.
2. Run the **SQL Server Configuration Manager**. On the left pane, click **SQL Server Services** and check the state of the **SQL Server Browser**. It has to be **Running**.

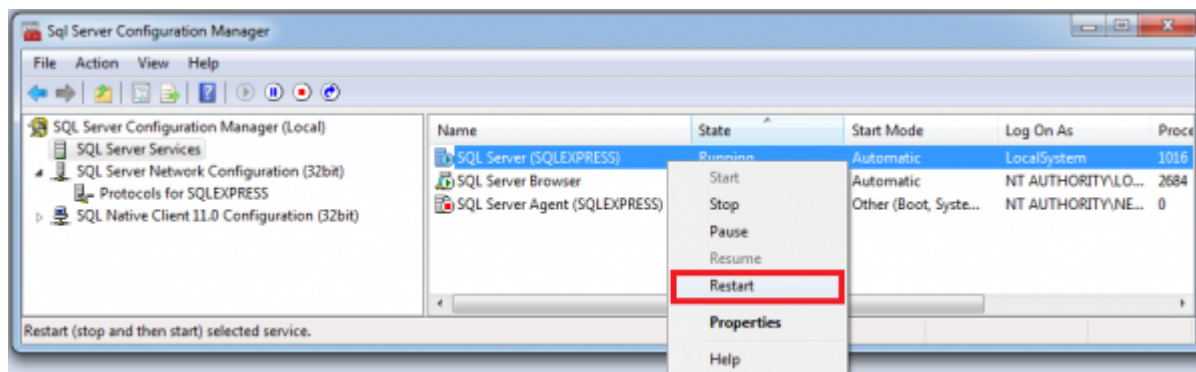


3. The authentication for the **SQL Server** must be done as **SQL Server Authentication**. **Windows Authentication** is not supported. Login ID and PW is required in the later **SQL Server Network**

**Configuration.** Then, click the **Protocols for SQLEXPRESS** and check if the TCP/IP is **Enabled**.

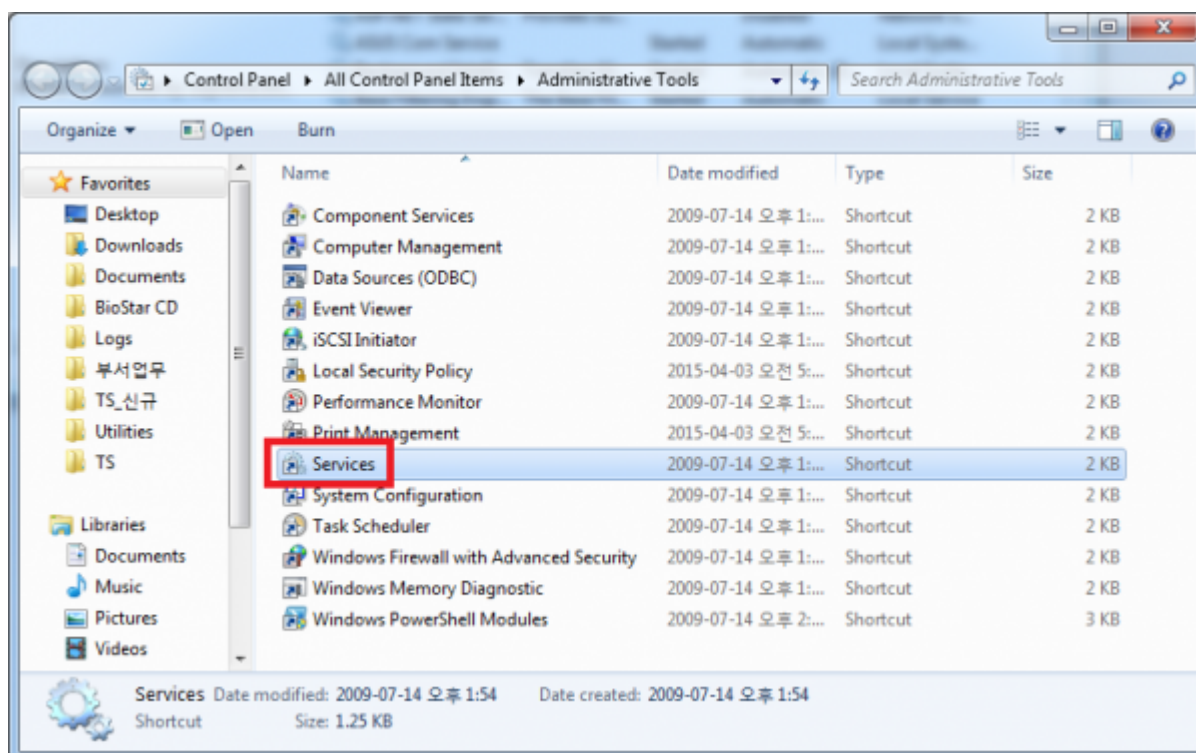


If you have changed any of the settings above you will have to restart the SQL Server.

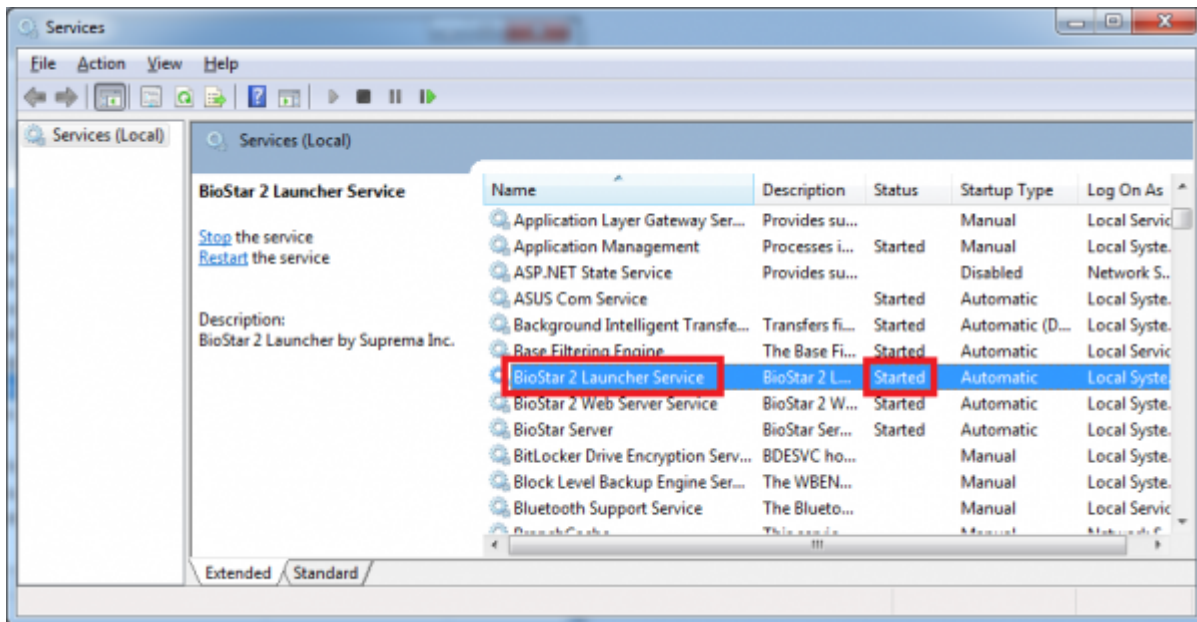


## Migrating logs from BioStar 1.x DB to BioStar 2 DB

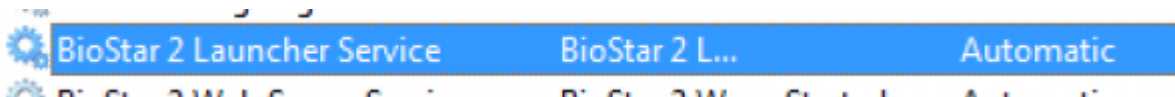
1. Run **Services** from your Windows **Control Panel**. (**Control Panel** > **Administrative Tools** > **Services**)



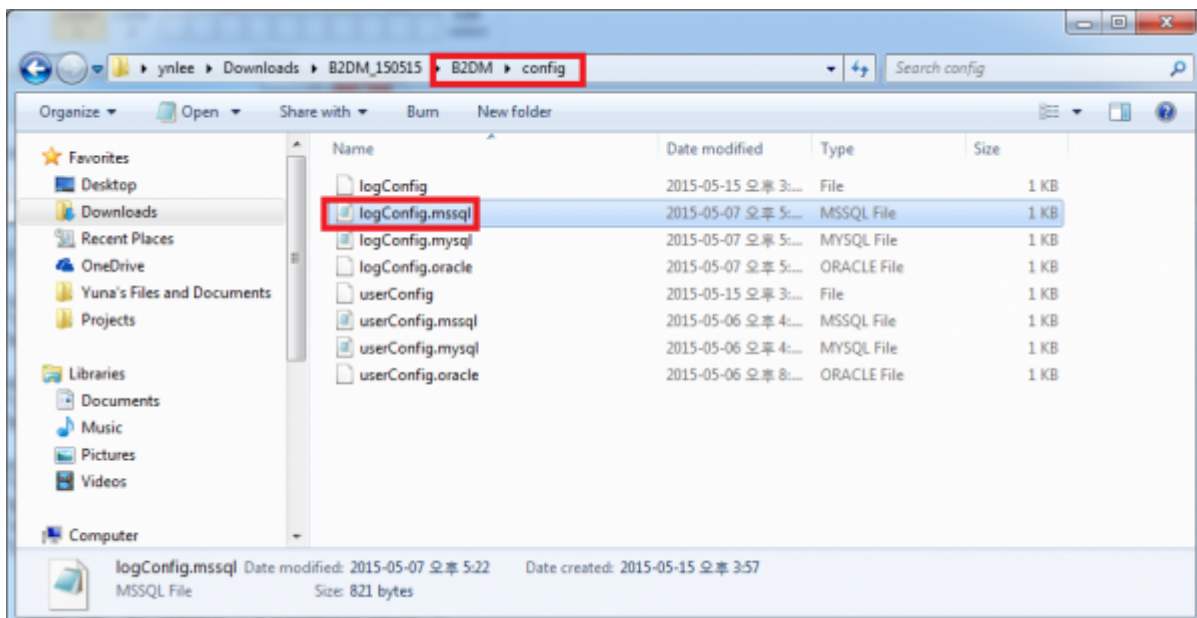
## 2. Search for **BioStar 2 Launcher Service**.



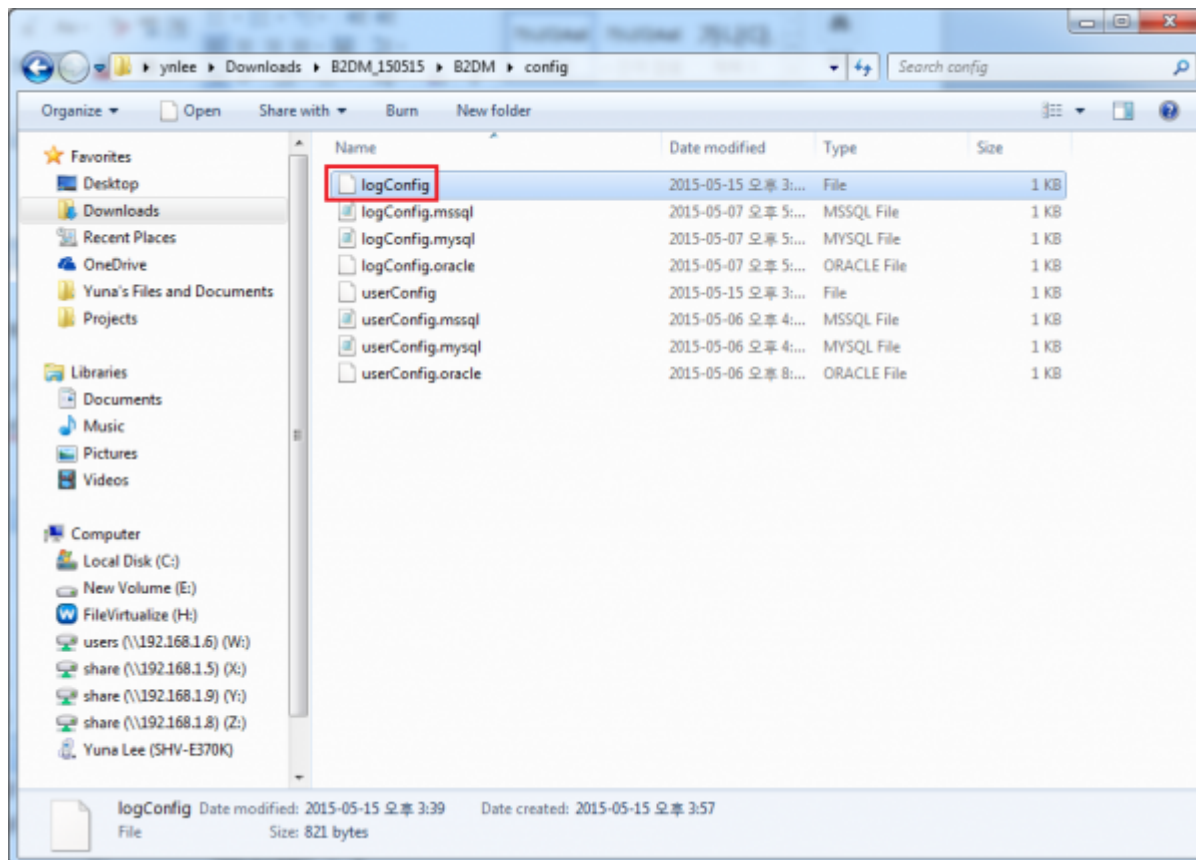
3. Right-click **BioStar 2 Launcher Service** and click **Stop**. Then the Status now would become blank.



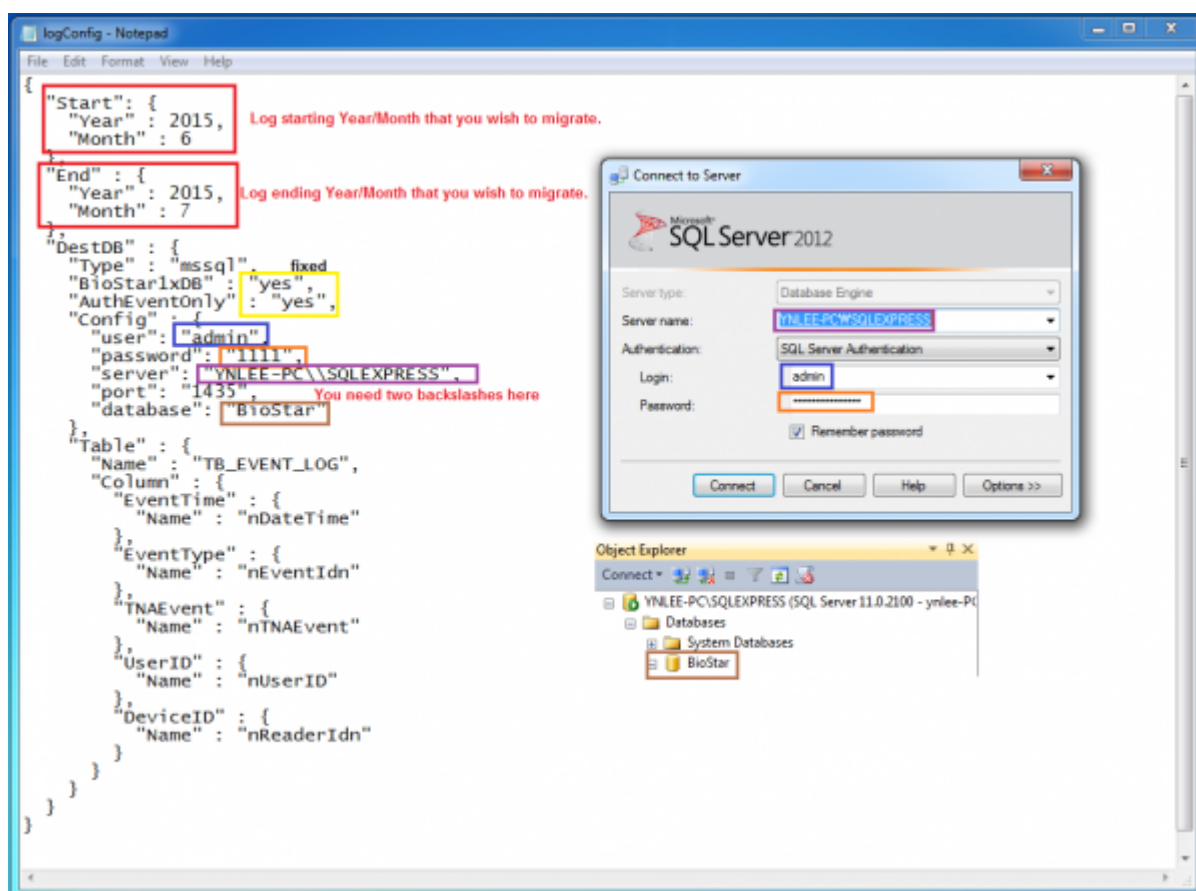
4. Go to **config** folder in the migration tool path. Open **logConfig.mssql**.



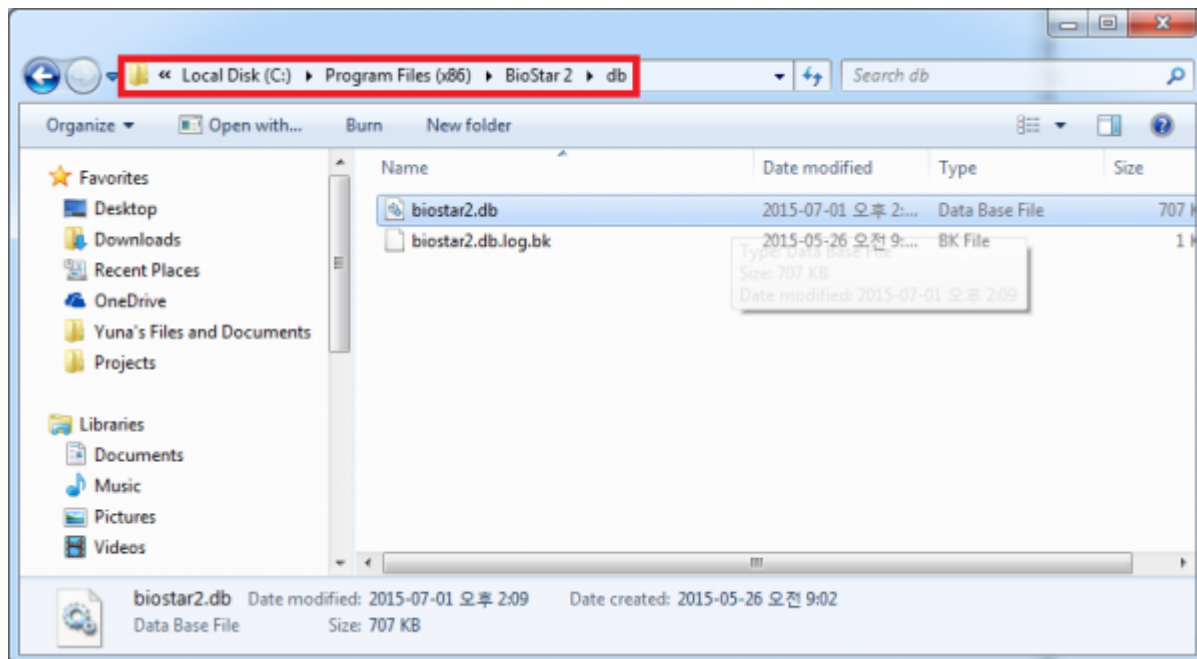
5. Copy the content and paste it in **logConfig** file.



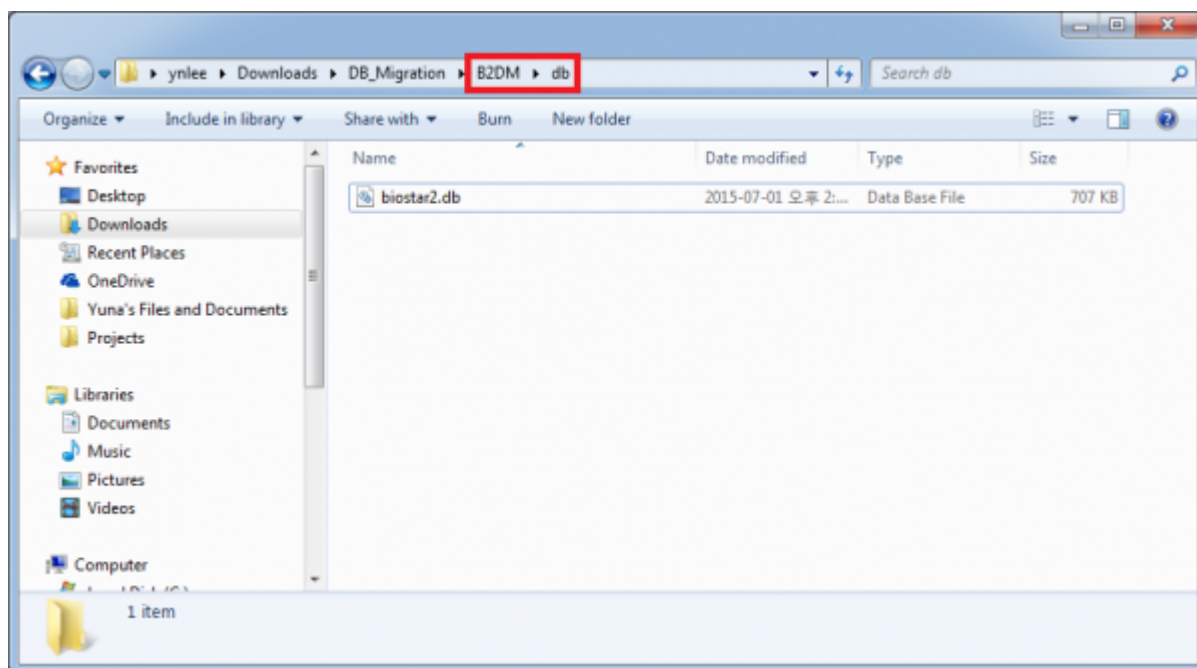
6. In **logConfig** file, fill the **log starting/snding month**, **user**, **password**, **server**, **port**, **database** information of your BioStar 1.x DB system and save it.



7. Go to BioStar2 installation folder (**C:\Program Files (x86)\BioStar 2**) and go to **db** folder.

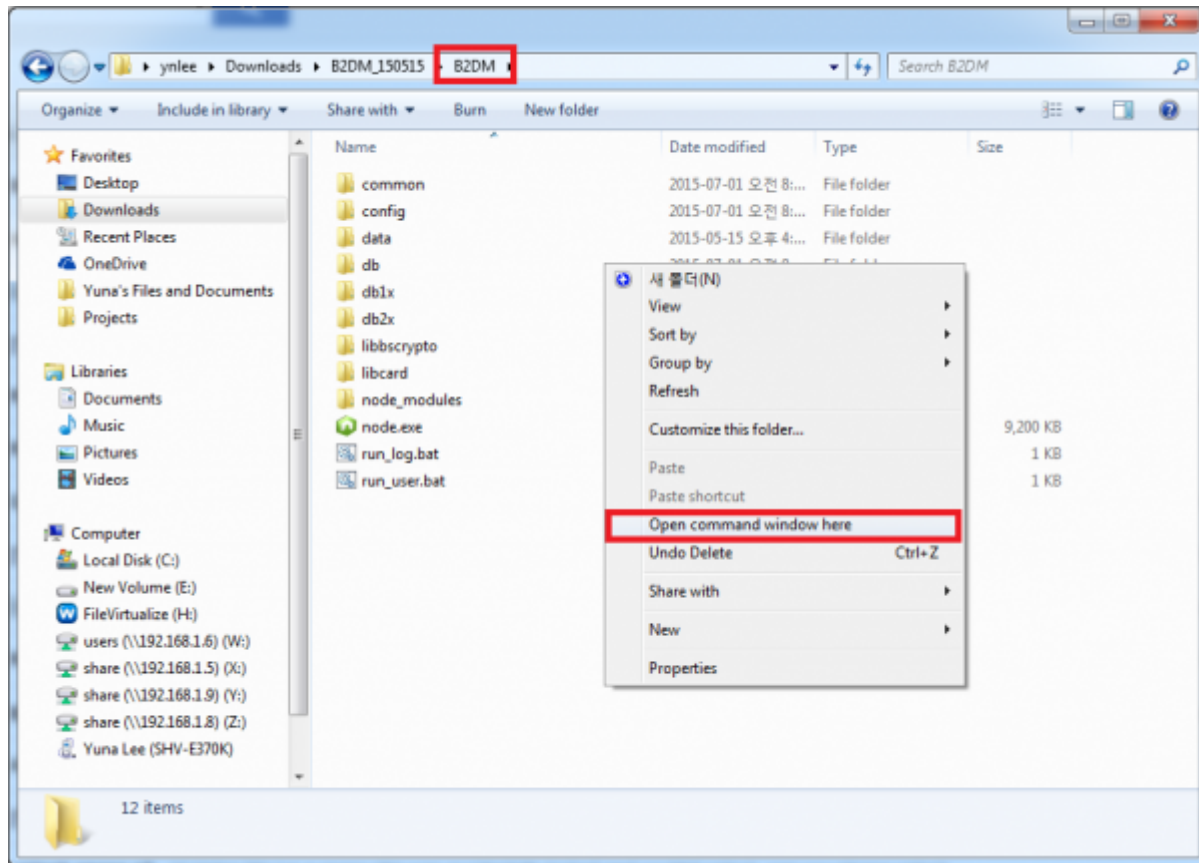


8. Copy the **biostar2.db** file and paste it in the **db** folder in the migration tool folder.

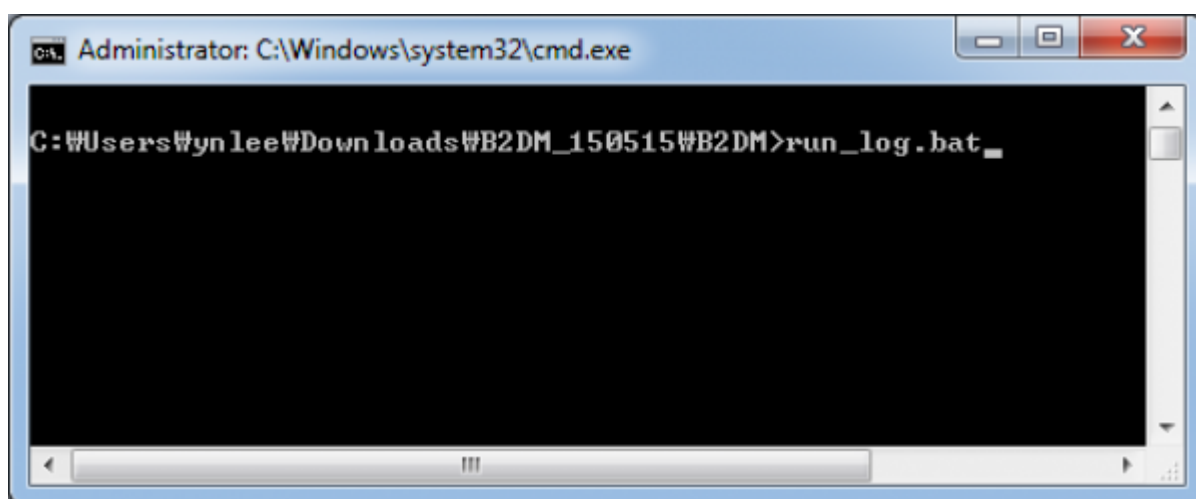


9. Go back to **B2DM** folder. **Shift+Right-click** then click **Open command window here**.

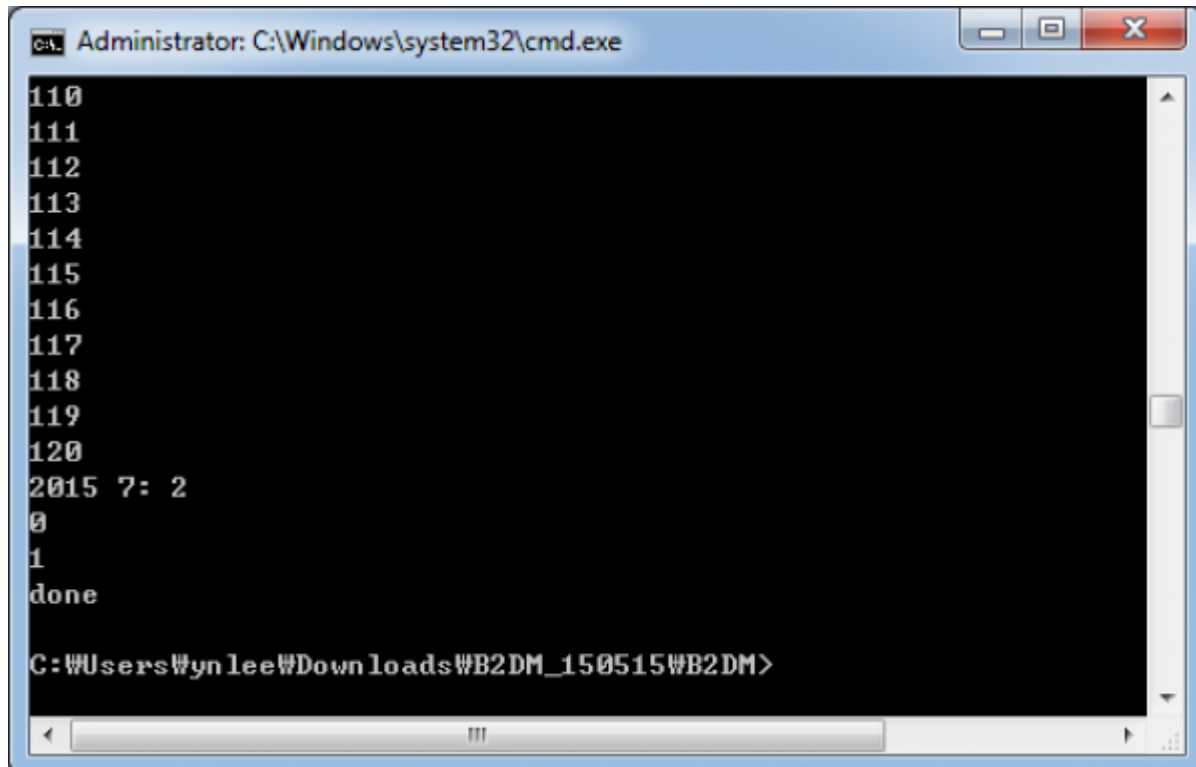




10. Type **run\_log.bat** and enter.



11. You will see migration logs.



```
Administrator: C:\Windows\system32\cmd.exe

110
111
112
113
114
115
116
117
118
119
120
2015 7: 2
0
1
done

C:\Users\Wyn lee\Downloads\B2DM_150515\B2DM>
```

From:  
<http://kb.supremainc.com/knowledge/> -

Permanent link:  
[http://kb.supremainc.com/knowledge/doku.php?id=en:2xfaq\\_how\\_to\\_migrate\\_db\\_logs\\_from\\_biostar\\_2\\_to\\_biostar\\_1x&rev=1568101772](http://kb.supremainc.com/knowledge/doku.php?id=en:2xfaq_how_to_migrate_db_logs_from_biostar_2_to_biostar_1x&rev=1568101772)

Last update: **2019/09/10 16:49**