

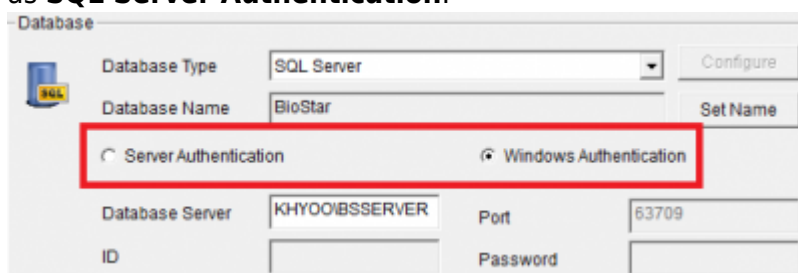
Table of Contents

How to use the DB migration tool	1
Preparations	1
Instructions	3

How to use the DB migration tool

This document will guide you through the process of how to use the DB migration tool. This DB migration Tool will be helpful to convert user information of BioStar 1.x to user information of BioStar 2.x. Please read the manual carefully and follow the instructions.

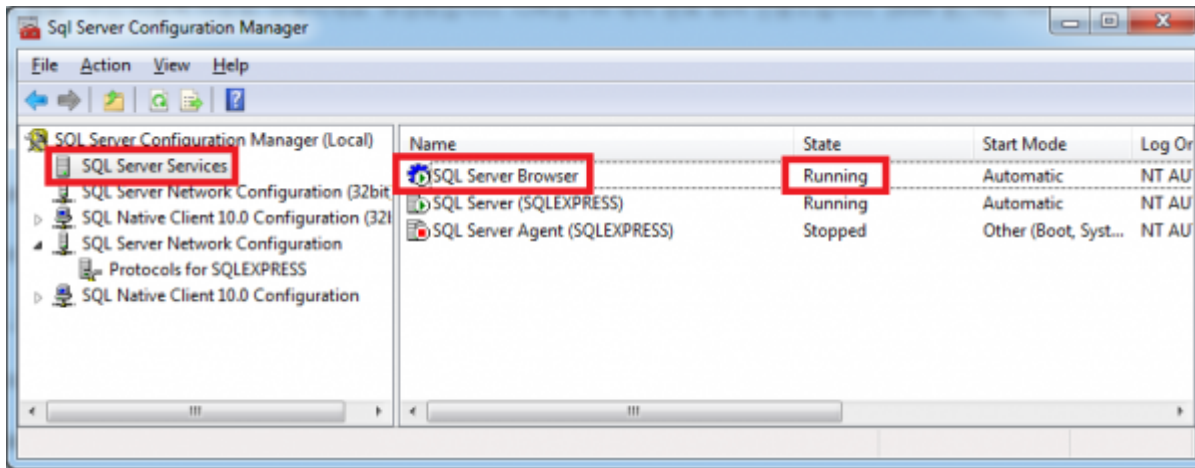
- This migration tool will overwrite any user information currently stored in the BioStar 2 database. We highly recommend you to make backup DB if you already have users stored in the BioStar 2.
- This migration tool currently does not support Oracle DB.
- **Department information** will not be converted to BioStar2 database.
- **User ID 1** will be not converted (BioStar2 creates a default administrator ID with **User ID 1**).
- **User access level** will be changed as a **normal user** because of the difference in concept between BioStar1.x and BioStar2.x.
- For the card information, only **Mifare CSN(7byte)** will be converted.
- **Windows Authentication** is not supported. The authentication for **SQL Server** must be done as **SQL Server Authentication**.



If you need to set SQL server authentication, please refer the following link;
<https://www.supremainc.com/en/node/618>

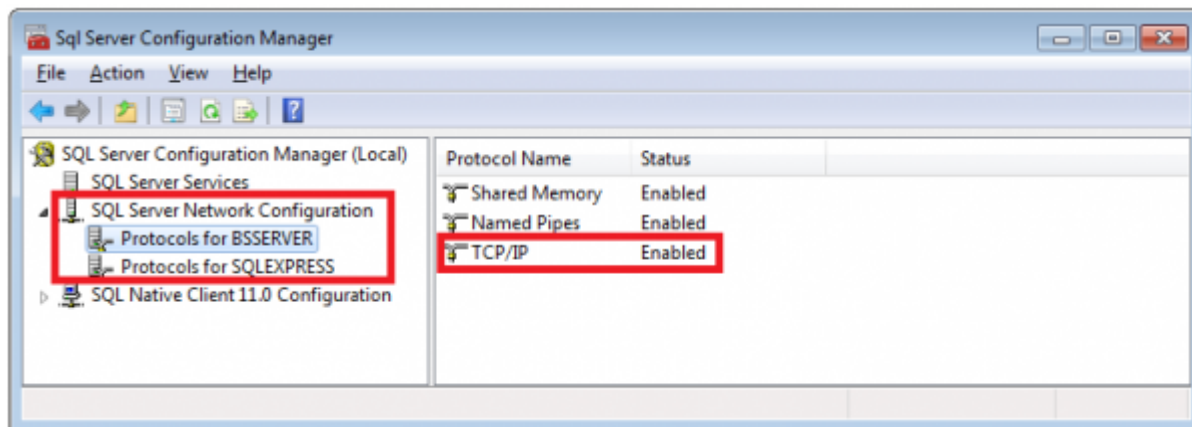
Preparations

1. Run the **SQL Server Configuration Manager**. On the left pane, click **SQL Server Services** and check the status of the **SQL Server Browser**. Set it to **Running** if it is set to **Stopped**.

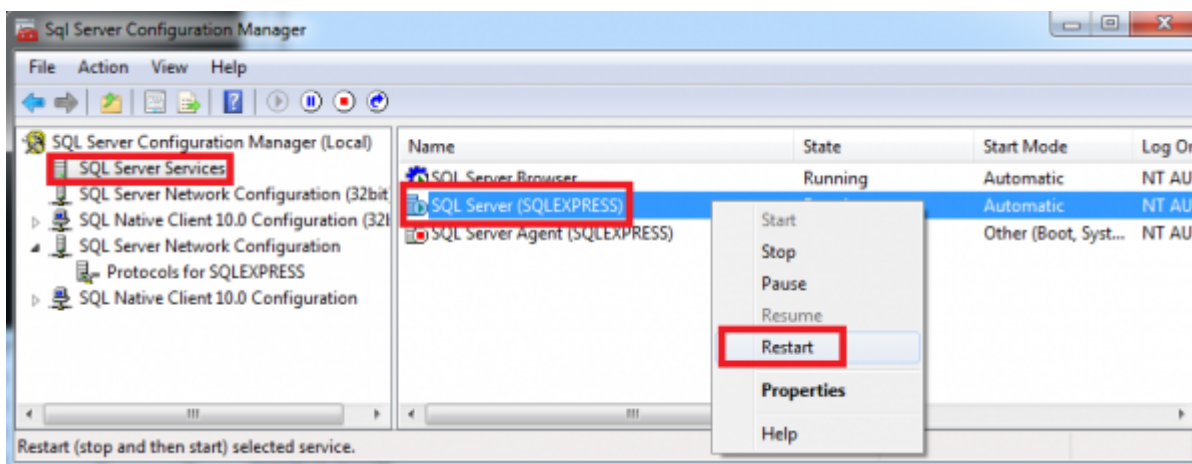


2. On the left pane, click **SQL Server Network Configuration**. There will be **protocols for SQLExpress** and **Protocols for BSSERVER** as follows. Then, click the **Protocols for SQLEXPRESS** and check if the TCP/IP is **Enabled**.

- The name of protocols depends on your system configuration.

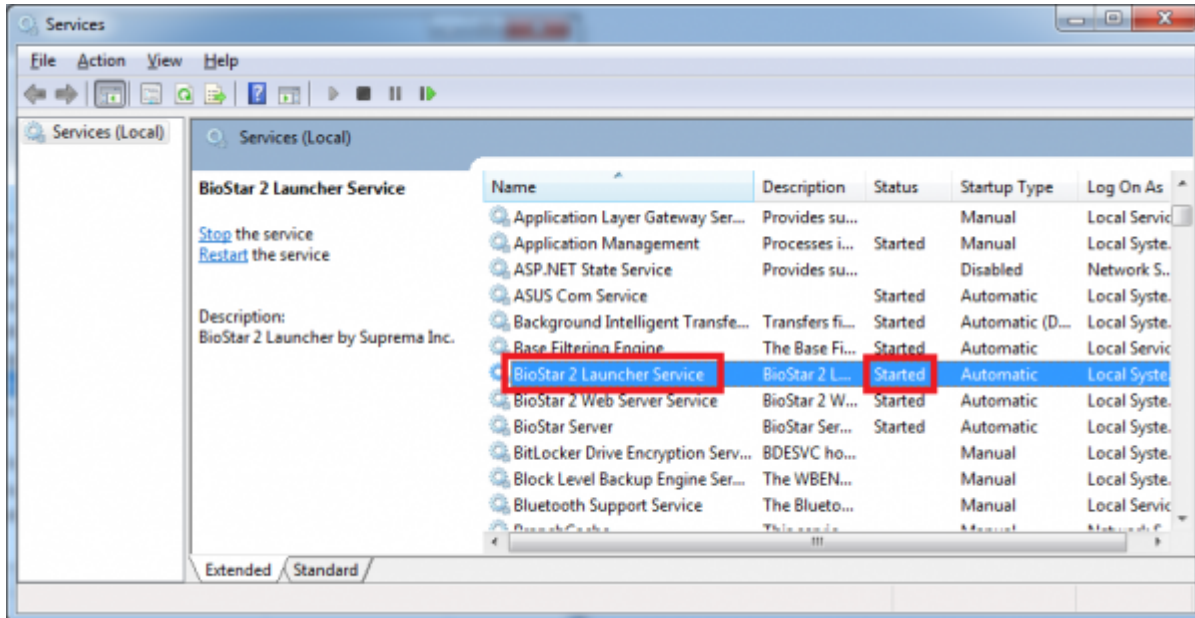


3. If you have changed any of the settings above you will have to restart the **SQL Server**. Click **SQL Server Services** from the left pane, right click **SQL SERVER** and click **Restart**.

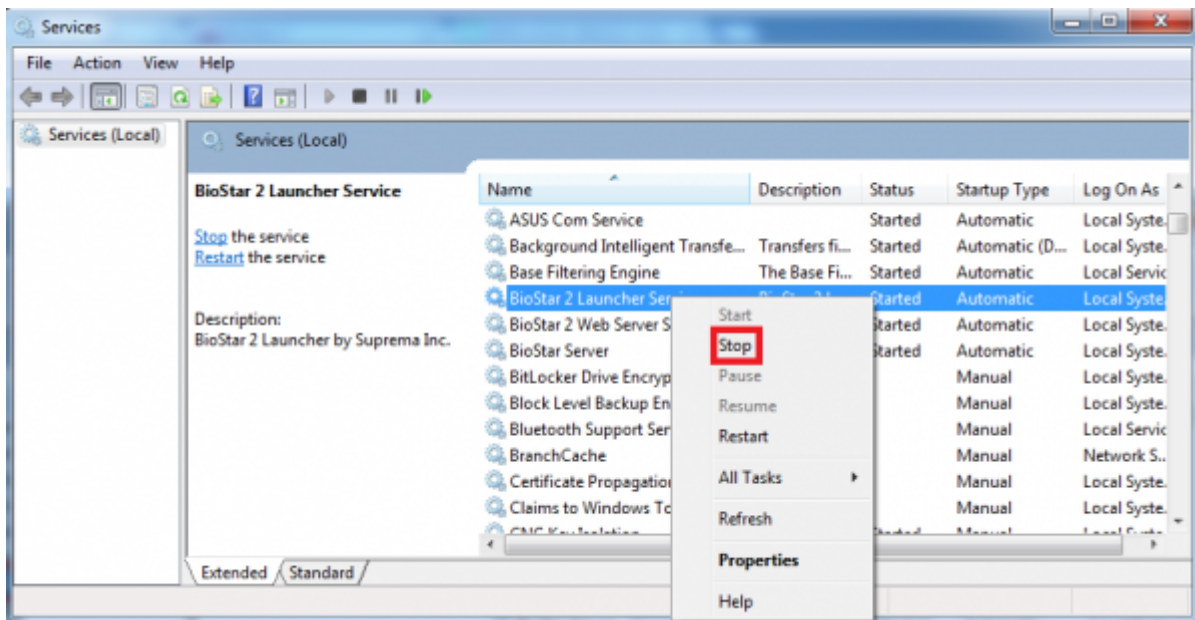


Instructions

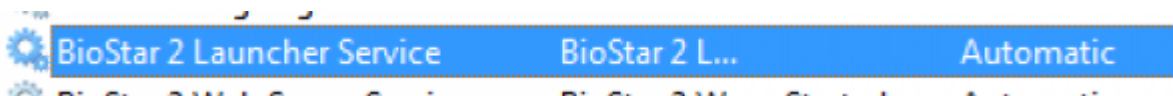
1. Run Services from your Windows control panel (**Control Panel > Administrative Tools > Services**)
2. Search for **BioStar 2 Launcher Service**.



3. Right click **BioStar2 Launcher Service** and click **Stop**.

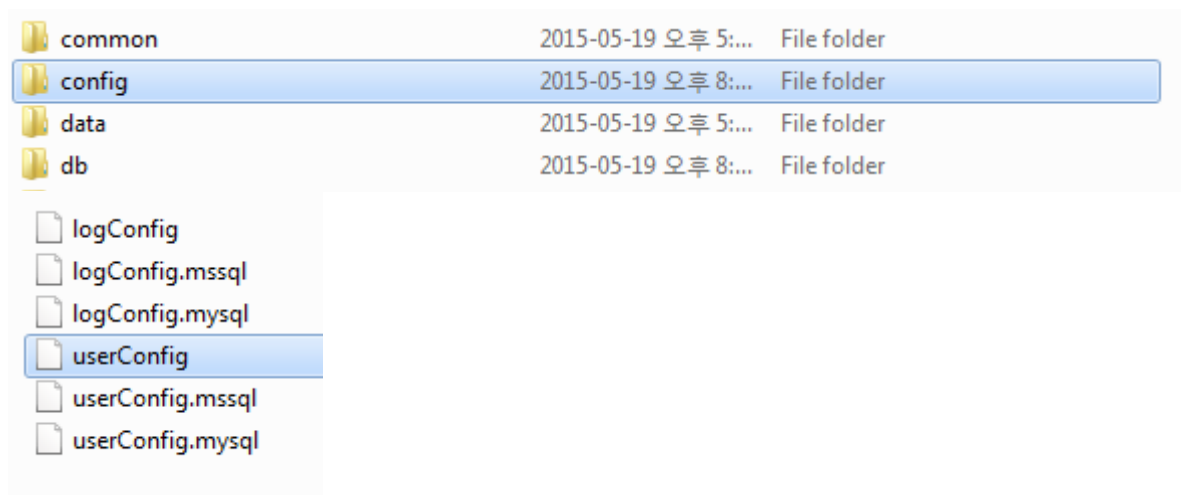


The status would appear as blank.

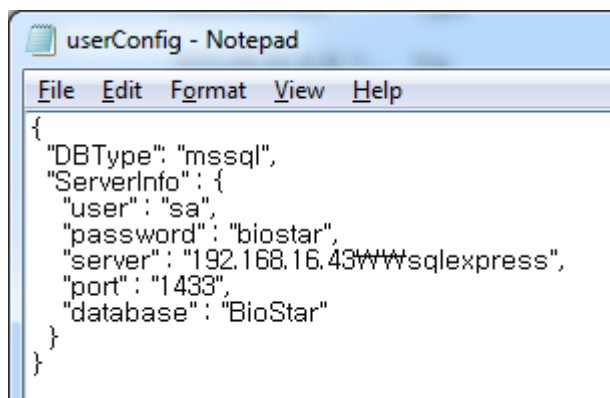


4. Fill out the DB information in the migration tool configuration file. (**B2DM\config\userConfig**).
- For MSSQL, please copy **userConfig.mssql** file to [userConfig] file.

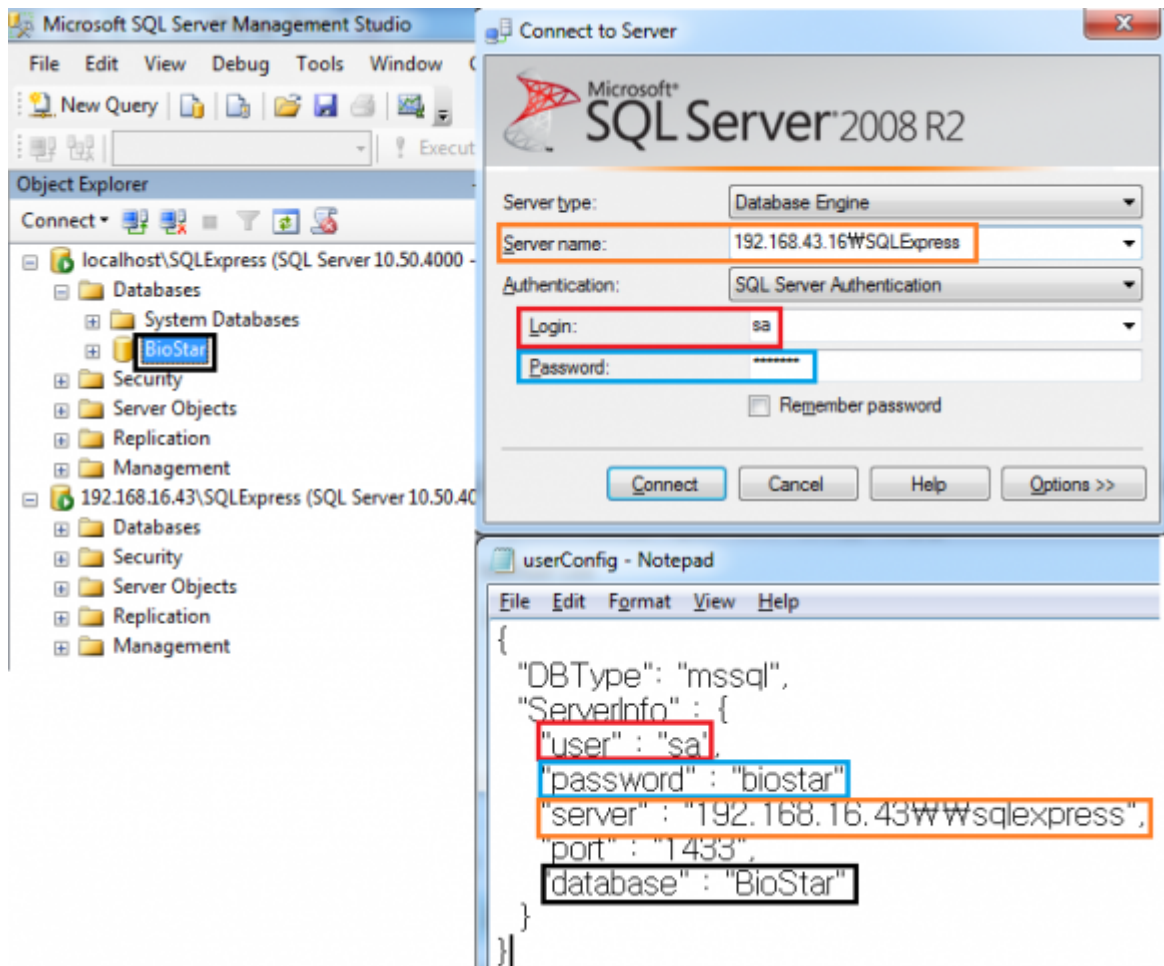
- For MYSQL, please copy **userConfig.mysql** file to [userConfig] file.



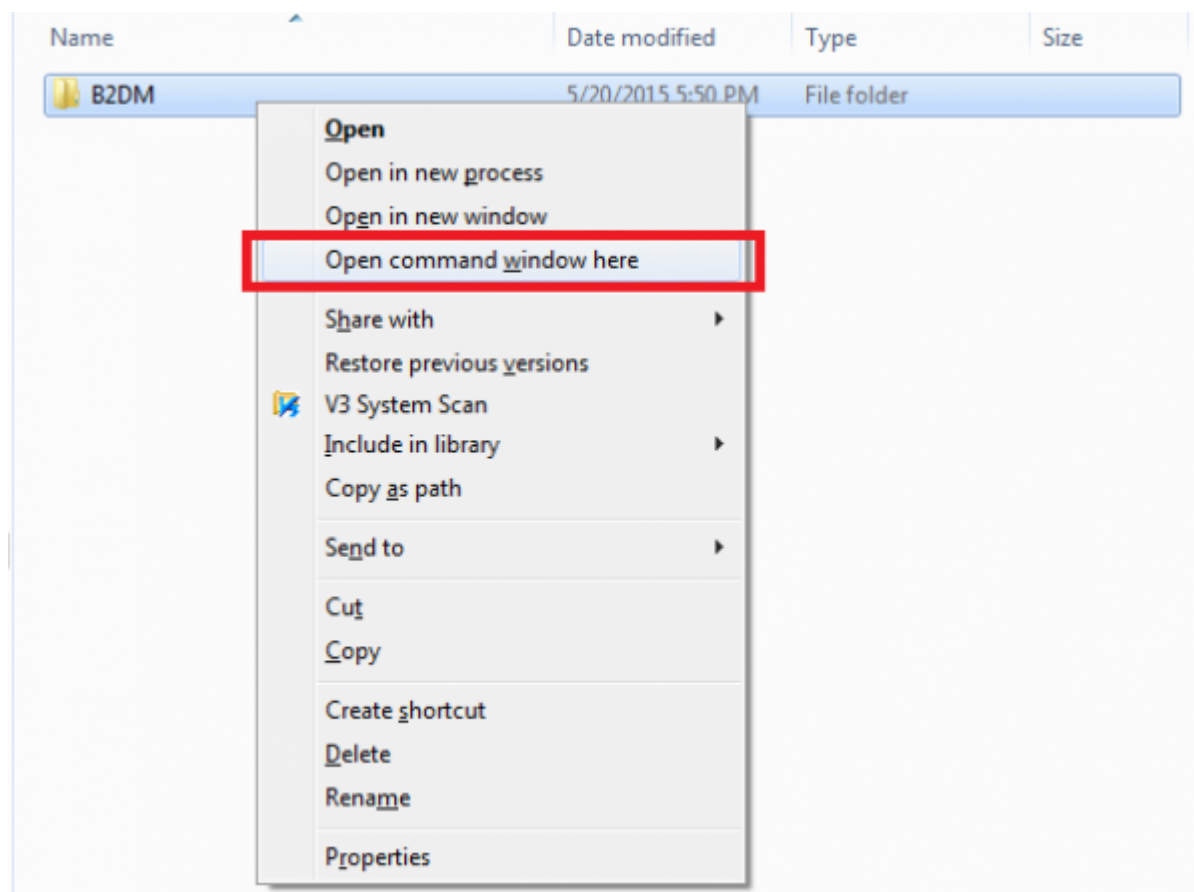
5. Edit the **user**, **password**, **server**, **port**, **database** name.



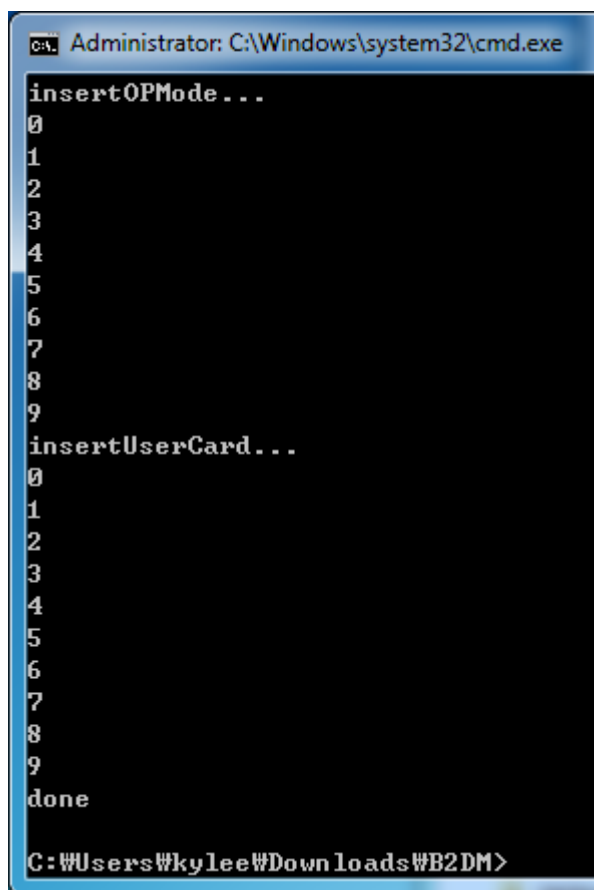
6. In case you don't know the information, you may find relevant information if you open **Microsoft SQL Server Management Studio Express**.



7. Press and hold the **Shift key** and right click on the folder that migration has been extracted, click on **Open command window here** to open a new command window with this specific directory.



8.To start the migration, type **run_user.bat** and press **Enter**.

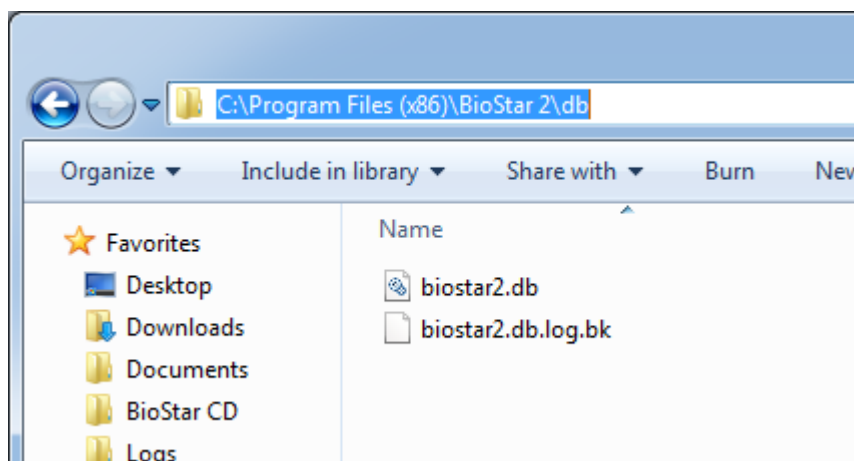


```
C:\> Administrator: C:\Windows\system32\cmd.exe

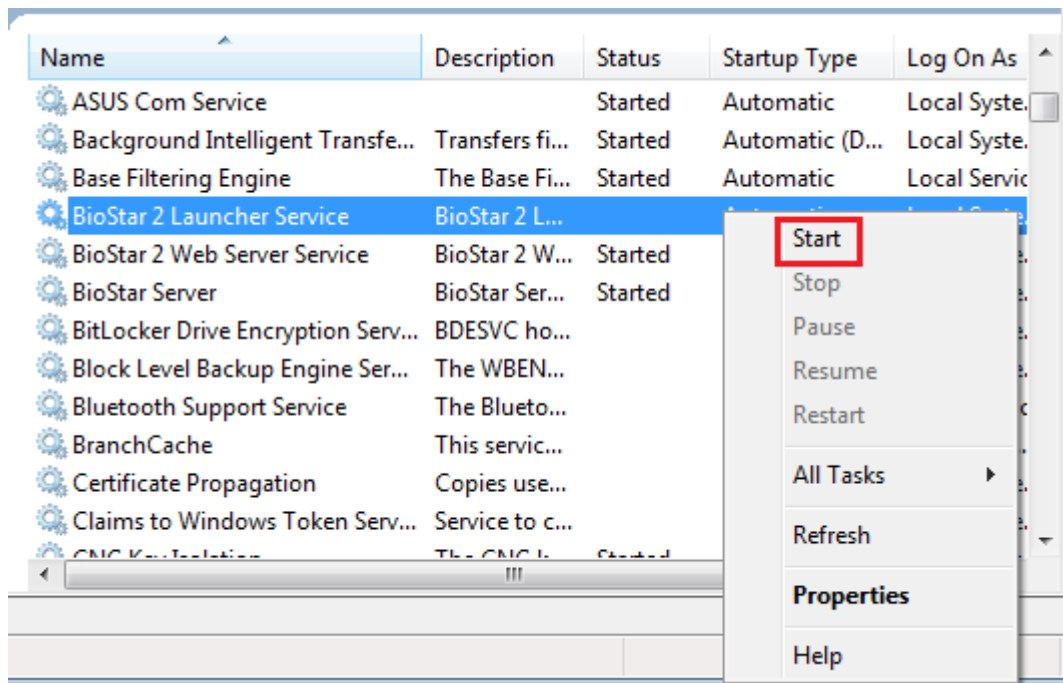
insertOPMode...
0
1
2
3
4
5
6
7
8
9
insertUserCard...
0
1
2
3
4
5
6
7
8
9
done

C:\Users\Wkylee\Downloads\B2DM>
```

9. Copy **biostar2.db** from **B2DM\db** folder and paste it to **C:\Program Files (x86)\BioStar 2\db** folder.



10. Start the **BioStar 2 Launcher Service** from **Services**.



11. Run BioStar2 and check the user list.

From:

<http://kb.supremainc.com/knowledge/> -

Permanent link:

http://kb.supremainc.com/knowledge/doku.php?id=en:2xfaq_how_to_use_the_db_migration_tool

Last update: **2015/10/19 14:32**