

Table of Contents

Improvements upon Event Logs Regarding Door Open

1

System Configuration, BioStar 2, Door

Improvements upon Event Logs Regarding Door Open

In previous versions of BioStar 2, Door open logs were limited to “Door unlocked” in Monitoring Menu in both Event log and Real- Time Log.

The screenshot displays the BioStar 2 software interface. On the left, a sidebar contains various monitoring options, with 'Event Log' and 'Real-time Log' highlighted. The main area shows the 'Event Log' for a specific period. The table below lists events with columns for Date, Door, Device ID, Device, User Group, User, and Event. The events include 'User enrollment succeeded (BioStar)', 'BioStar connected', 'DHCP connected', 'Door locked', 'Tamper on', 'Door unlocked', 'Device started', and 'Network connected'. A yellow box highlights the 'Door unlocked' event in the table.

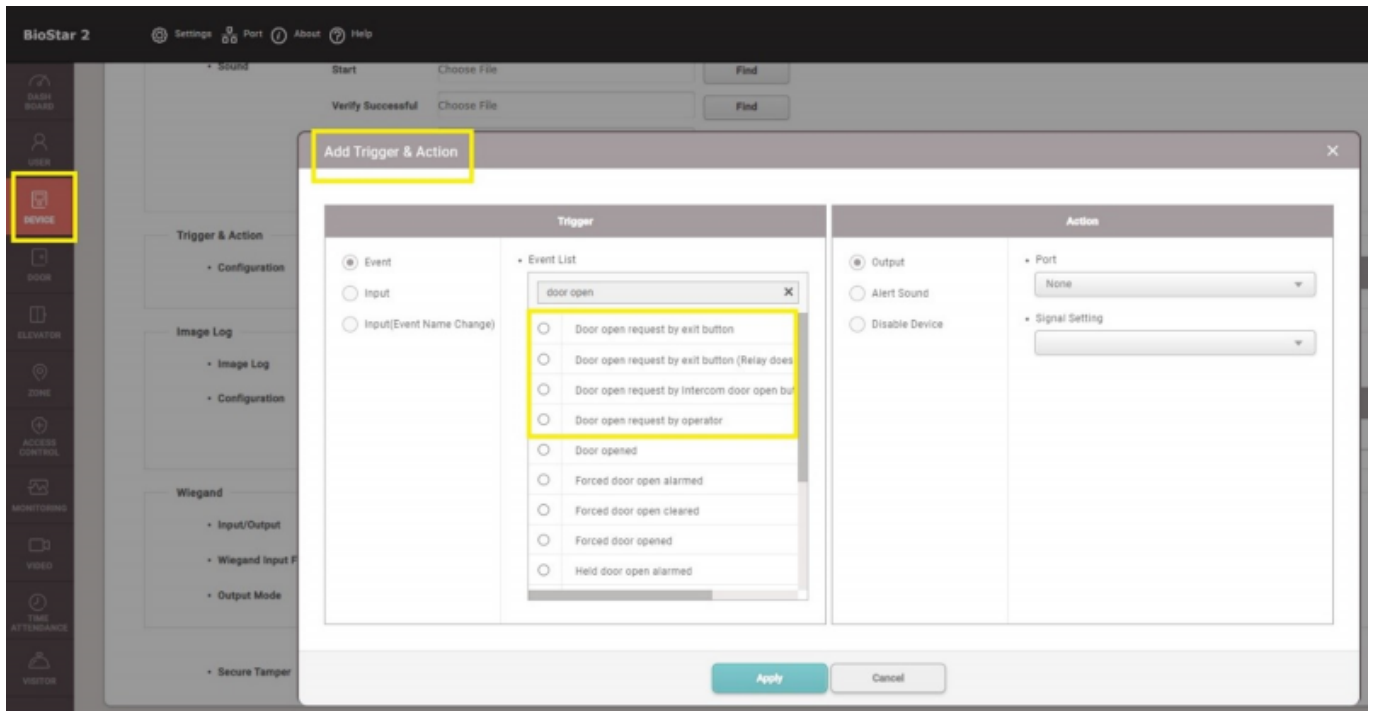
Date	Door	Device ID	Device	User Group	User	Event
2022/10/19 13:30:13		543614244	FaceStation F2 543614244 (192.168.1...	All Users	3(290)	User enrollment succeeded (BioStar)
2022/10/19 13:24:10		543614244	FaceStation F2 543614244 (192.168.1...			BioStar connected
2022/10/19 13:24:10		543614244	FaceStation F2 543614244 (192.168.1...			DHCP connected
2022/10/19 13:24:10	Test Door	543614244	FaceStation F2 543614244 (192.168.1...			Door locked
2022/10/19 13:24:07		543614244	FaceStation F2 543614244 (192.168.1...			Tamper on
2022/10/19 13:24:07	Test Door	543614244	FaceStation F2 543614244 (192.168.1...			Door unlocked
2022/10/19 13:24:06		543614244	FaceStation F2 543614244 (192.168.1...			Device started
2022/10/19 13:24:06		543614244	FaceStation F2 543614244 (192.168.1...			Network connected

BioStar 2 Version 2.9.0 Newly Added Door Open logs

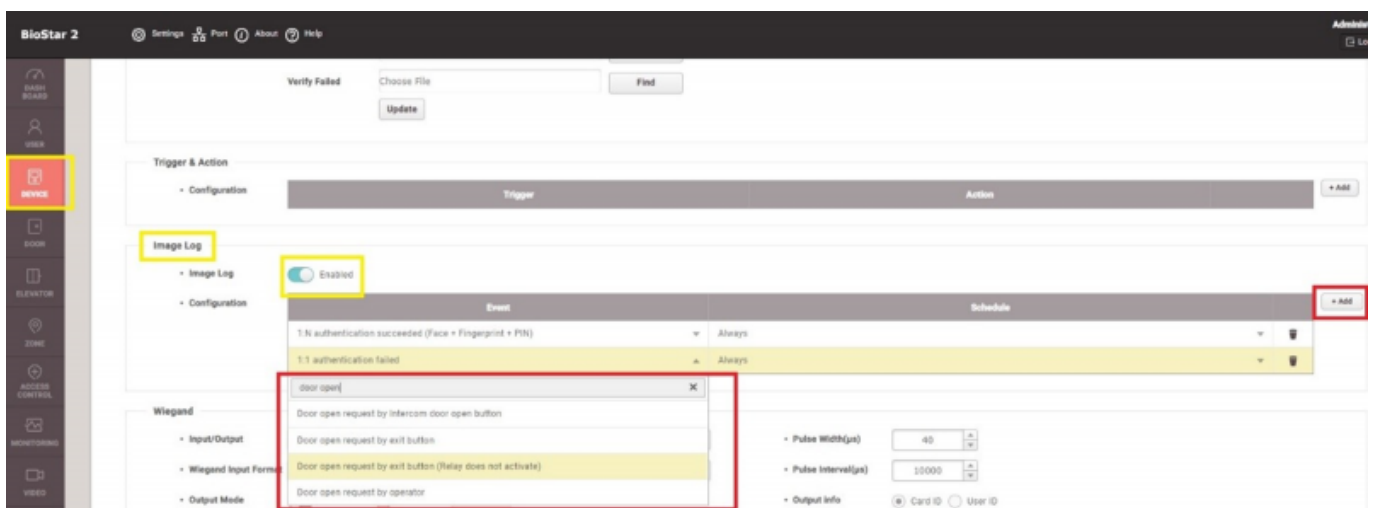
- Unordered List ItemDoor open requested by exit button
- Unordered List ItemDoor open requested by the operator
- Unordered List ItemDoor open requested by exit button (Replay does not activate)

Now BioStar 2 Version 2.9.0 consists Door Open logs in details. Detailed door open logs can be found in Monitoring menu in both Event Log and Real-time Log. Furthermore, these detailed door unlocked functions could be added on to trigger & action, and image log.

Device → Trigger & Action



Device Image Log



Newly added logs can be found in Monitoring menu in both Event Log and Real-time Log

- Unordered List ItemDoor open request by exit button
- Unordered List ItemDoor open request by the operator
 - when the operator clicks open button from BioStar 2 Door status menu, the door open time will be using the same setting as the Door open time.

Example Case) Operator uses Monitoring → Door Status Menu to unlock the door

Real-time Log

Save Filter Pause Clear ...

Date	Door	Elevator	Device ID	Device	User	Zone	Event	V...
31/07/2020 15:13:38			239	FaceStat...	2(-)		Access denied (Invalid access group)	
31/07/2020 15:13:26	fs2		239	FaceStat...			Door locked	
31/07/2020 15:13:23			239	FaceStat...	200706(-)		1:N authentication succeeded (Face)	
31/07/2020 15:13:23	fs2		239	FaceStat...			Door unlocked	

BioStar2 Version 2.9.0 (newly added log : **Door unlock requested by operator** is shown)

BioStar 2 Settings Port About Help

DASH BOARD USER DEVICE ROOM ELEVATOR ZONE ACCESS CONTROL MONITORING

List View Graphic Map View

Event Log Real-time Log Live Video View Device Status Door Status Floor Status Zone Status Alert History Thermal Report

Real-time Log

Save Filter Pause

Date	Door	Elevator	Device ID	Device	User	Zone	Event
2022/10/16 22:29:54	Test Door		543614244	FaceStation F2 ...			Door unlocked
2022/10/16 22:29:54	Test Door		543614244	FaceStation F2 ...			Door unlock request by operator

- **Door open request by exit button (Relay does not activate)**
 - case for exit button that does NOT trigger relay

From:

<https://kb.supremainc.com/knowledge/> -

Permanent link:

https://kb.supremainc.com/knowledge/doku.php?id=en:door_open_event_logs

Last update: **2023/12/07 16:24**