

Table of Contents

How to add devices 1

Add devices to the BioStar 2 server 1

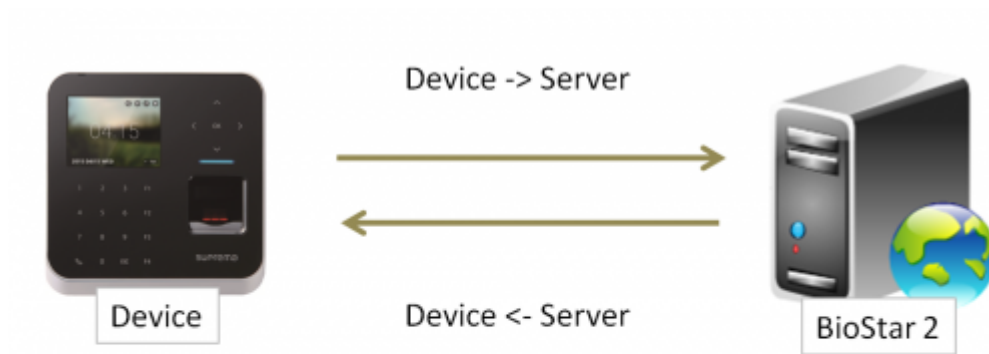
Add slave devices connected via RS-485 interface 4

Video Demo 7

System Configuration, BioStar 2, Device

How to add devices

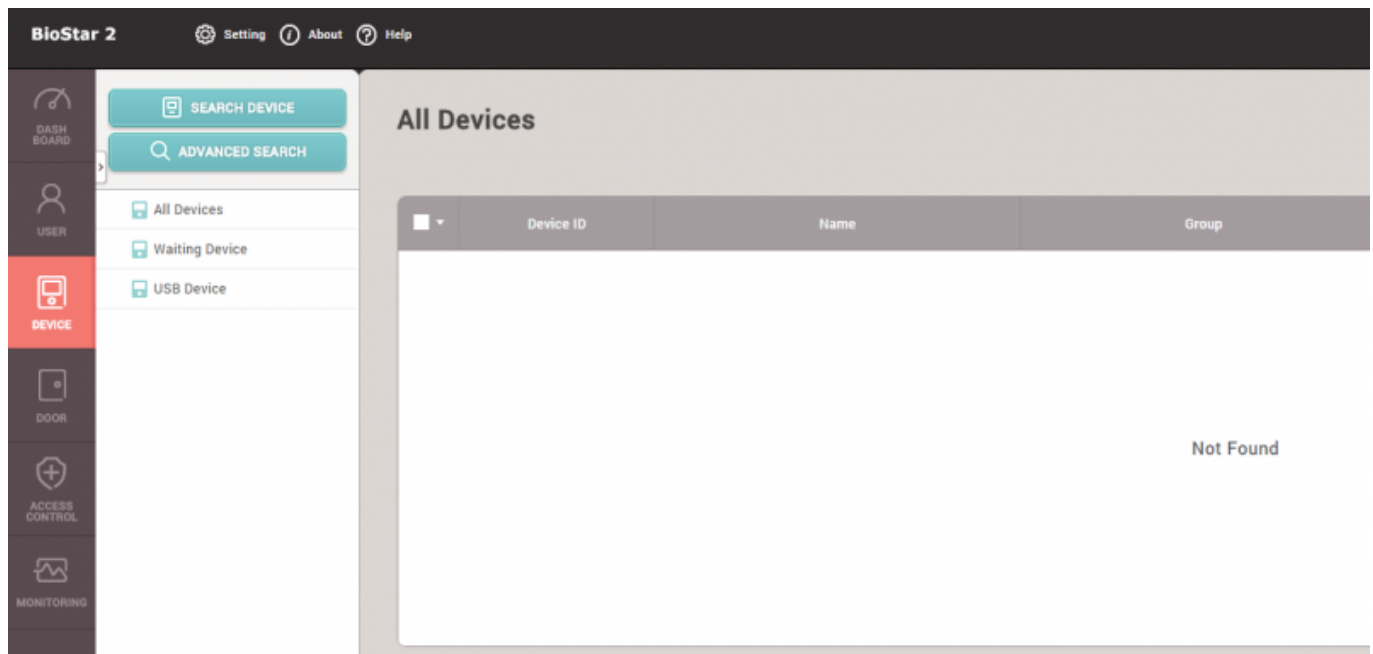
BioStar 2 supports two connection modes shown in the image below. Check the fundamental course contents for more information.



Function	BioStar 1.x		BioStar 2	
Mode	Direct	Server	Device -> Server	Server -> Device
Realtime log update	Only to Client	<input type="radio"/>	<input type="radio"/>	<input type="radio"/>
Auto Reconnect	X	<input type="radio"/>	<input type="radio"/>	<input type="radio"/>

Add devices to the BioStar 2 server

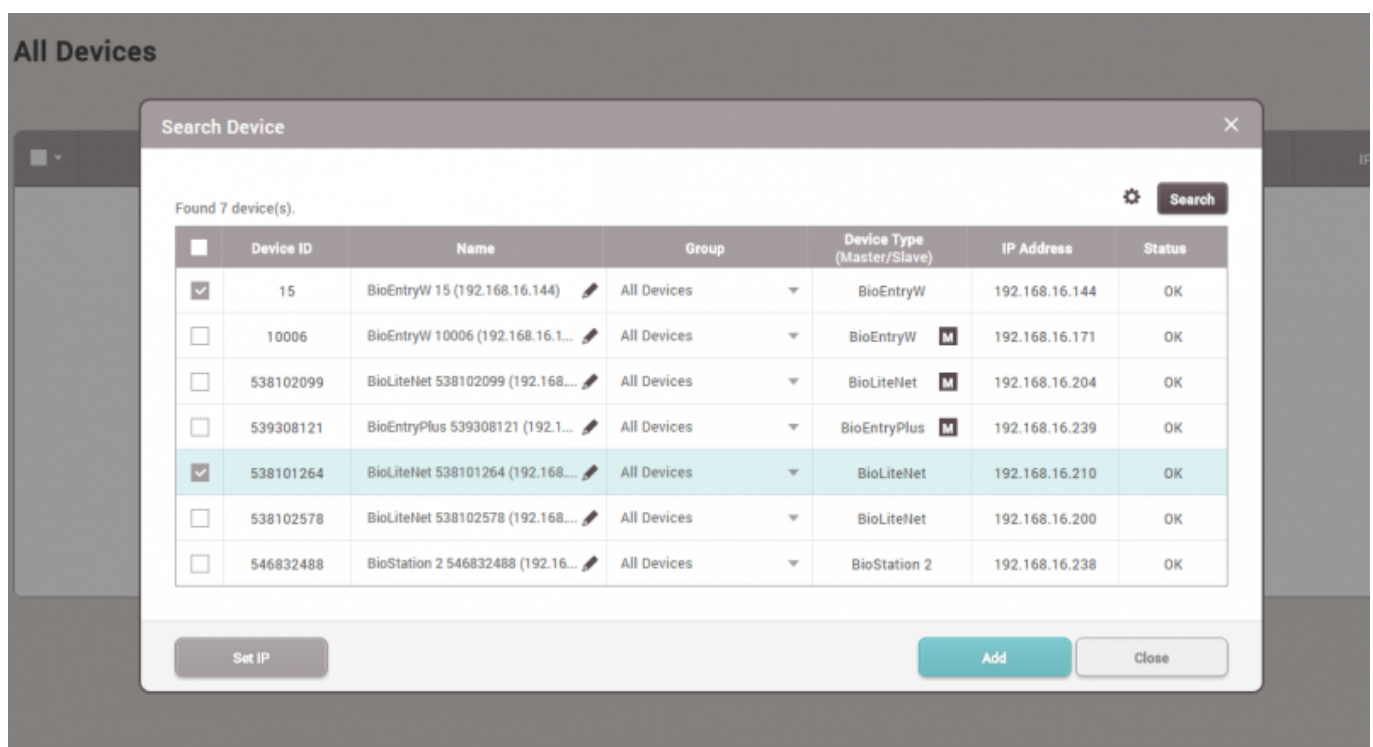
1. Go to **Device** and click **Search Device**.



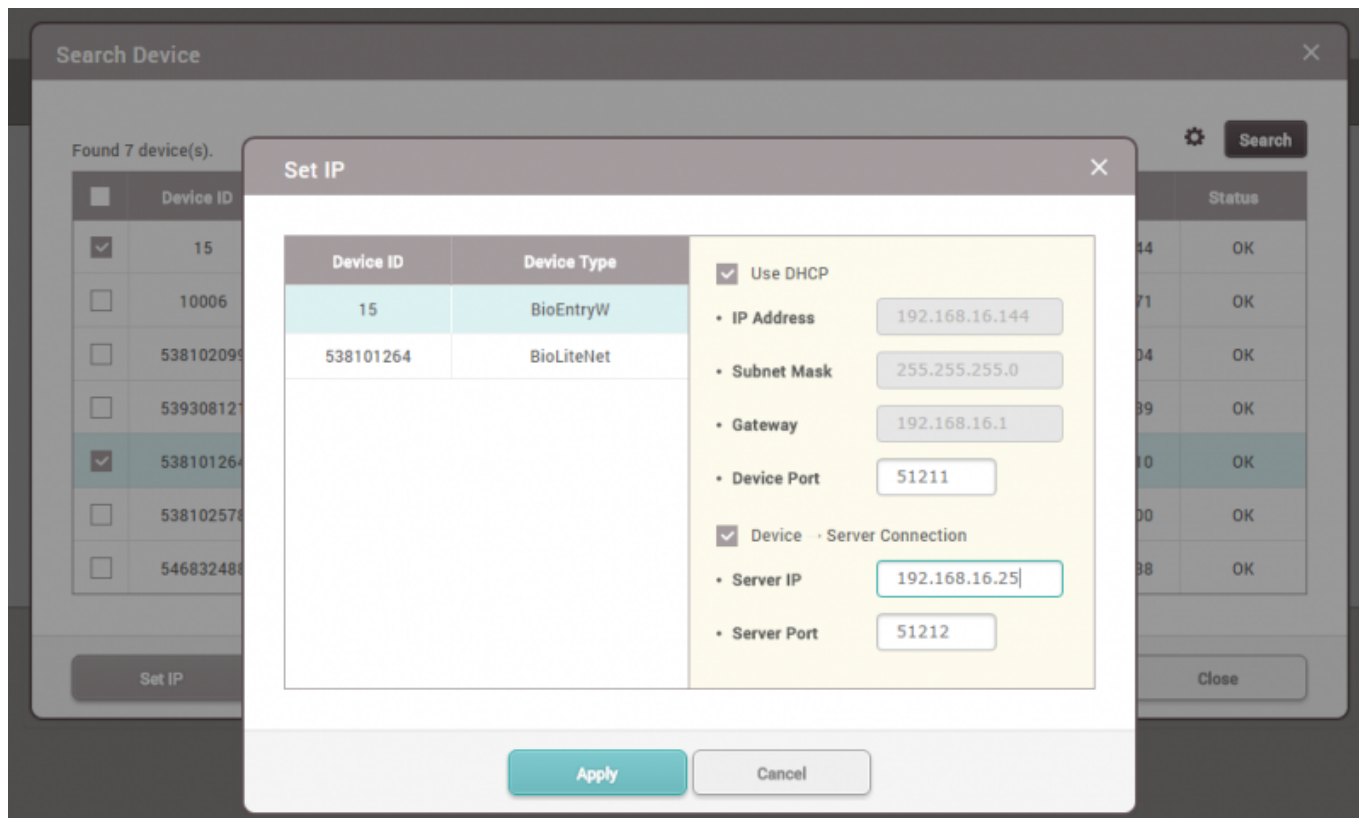
2. Select the devices you want to add to your server.

BioStar 2 has two communication modes, **Device → Server** and **Server → Device**.

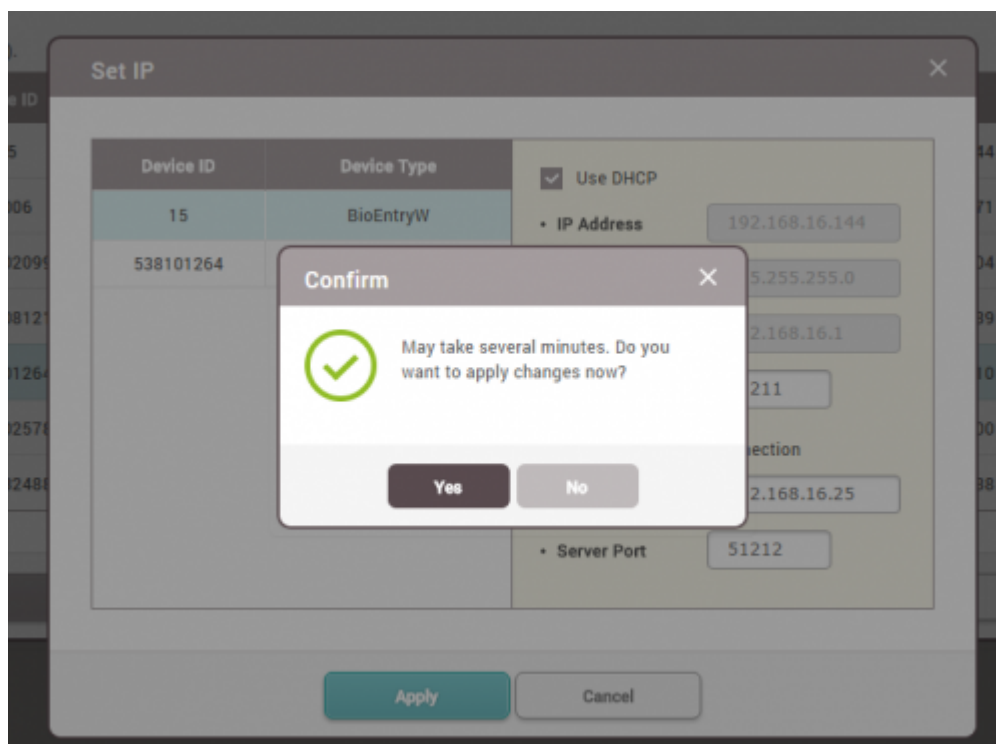
There's no functional difference between the two. However, **Device → Server** direction can prevent the device connection from being changed or disconnected from the designated server.



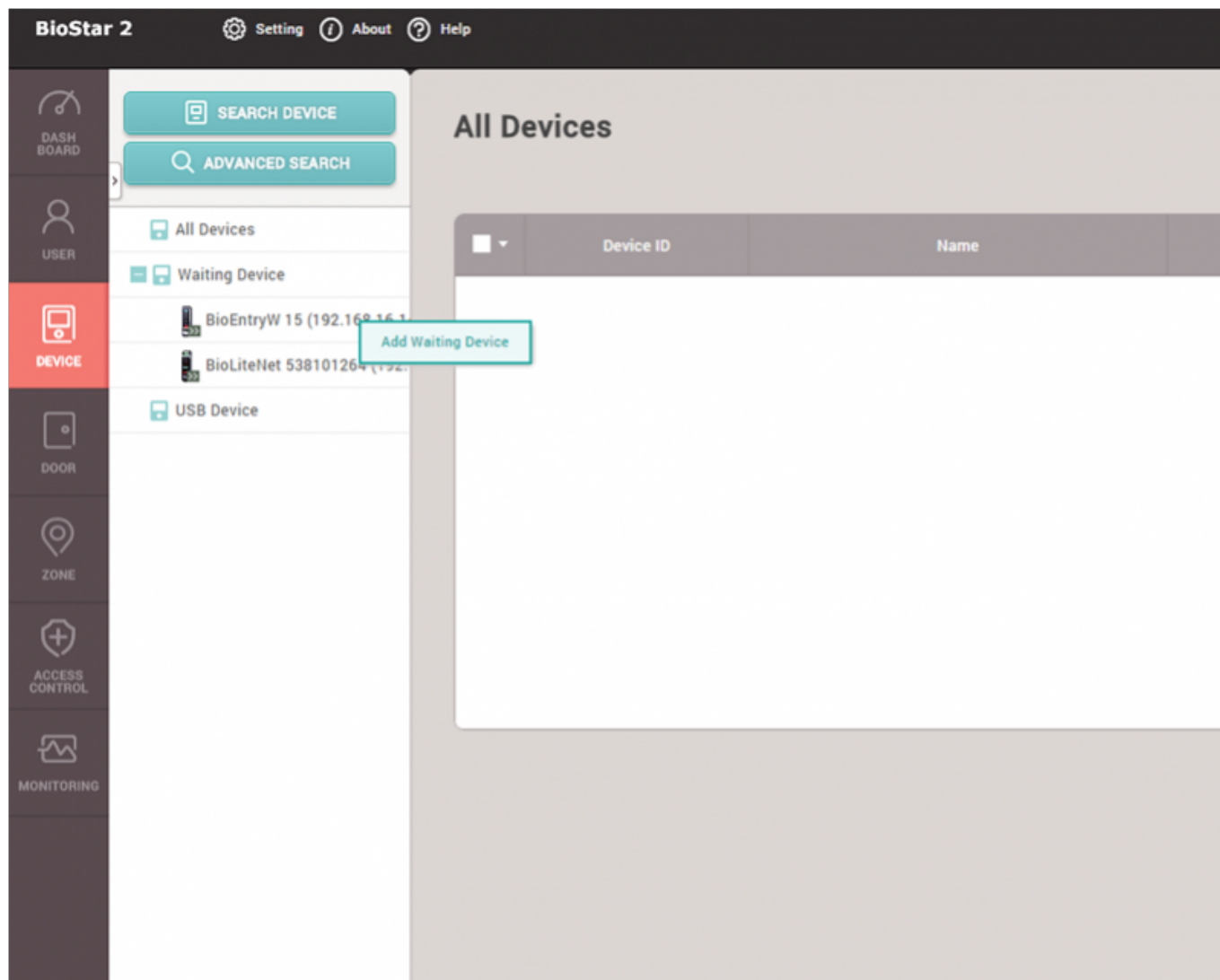
If you want to change the device IP address or their communication modes to **Device → Server**, click **Set IP** instead of **Add** button.



3. Set the server IP address and click **Apply**. Then, the device will automatically try to make a connection.



4. With the **Device → Server** direction, the device will be shown on the **Waiting Device** list. Refresh the browser to check the connection. Once you find the device, you can confirm and add it to the server by right-clicking on the device tree and clicking **Add Waiting Device** button.



Add slave devices connected via RS-485 interface

1. Check the physical device connection and change the device to be the master device in the device setting.

The screenshot displays the BioStar 2 configuration interface. On the left is a vertical sidebar with icons for USER, DEVICE (highlighted in red), DOOR, ZONE, ACCESS CONTROL, and MONITORING. The main content area is divided into three sections:

- Network:**
 - TCP/IP:** Includes a checked 'Use DHCP' checkbox. Fields for 'IP Address' (192.168.16.210), 'Gateway' (192.168.16.1), and 'Support 100 BASE-T' (toggle set to 'Not Use') are visible. Labels for 'Subnet Mask', 'Device Port', and 'MTU Size' are on the right.
 - Server:** Includes a checked 'Device - Server Connection' checkbox. A 'Server IP' field contains 192.168.16.25. A 'Server Port' label is on the right.
 - Serial:** An 'RS485' dropdown menu is open, showing options: Default, Master (highlighted in yellow), Slave, and Default (highlighted in light blue). A 'Baud Rate' label is on the right.
- Authentication:**
 - Auth Mode:** A table with three rows of authentication methods and their modes.

Auth Mode	Method	Mode	Action
Auth Mode	[Fingerprint icon]	Always	[Edit/Delete icons]
	[Card reader icon] + [Fingerprint icon]	Always	[Edit/Delete icons]
	[IP icon] + [Fingerprint icon]	Always	[Edit/Delete icons]

- Master - Making logical decisions and controlling local zone
- Slave - Become a dummy reader to send credential input to the master device
- logical decisions: The master device matches user biometric information and user information received from the slave device, opens the door according to the result, and delivers the result to the slave device. It also controls the Local Zone.

2. Change the device to be **Slave Mode** to be searchable by the master device. Connect to the master device via RS-485 cable, and check the physical wiring connection, and go to BioStar 2 and **DEVICE** tap and right-click on the device tree and then click **Search Slave Device**.

Network

TCP/IP

- ☒ Use DHCP
- IP Address: 192.168.16.144
- Gateway: 192.168.16.1
- Support 100 BASE-T: ☐ Not Use

Server

- ☐ Device -> Server Connection
- Server IP: 0.0.0.0

Serial

- RS485: Slave

BioStar 2 Setting About Help

All Devices

Device ID	Name	Group
8101264	BioLiteNet 538101264 (192.168.16.210)	All Devices

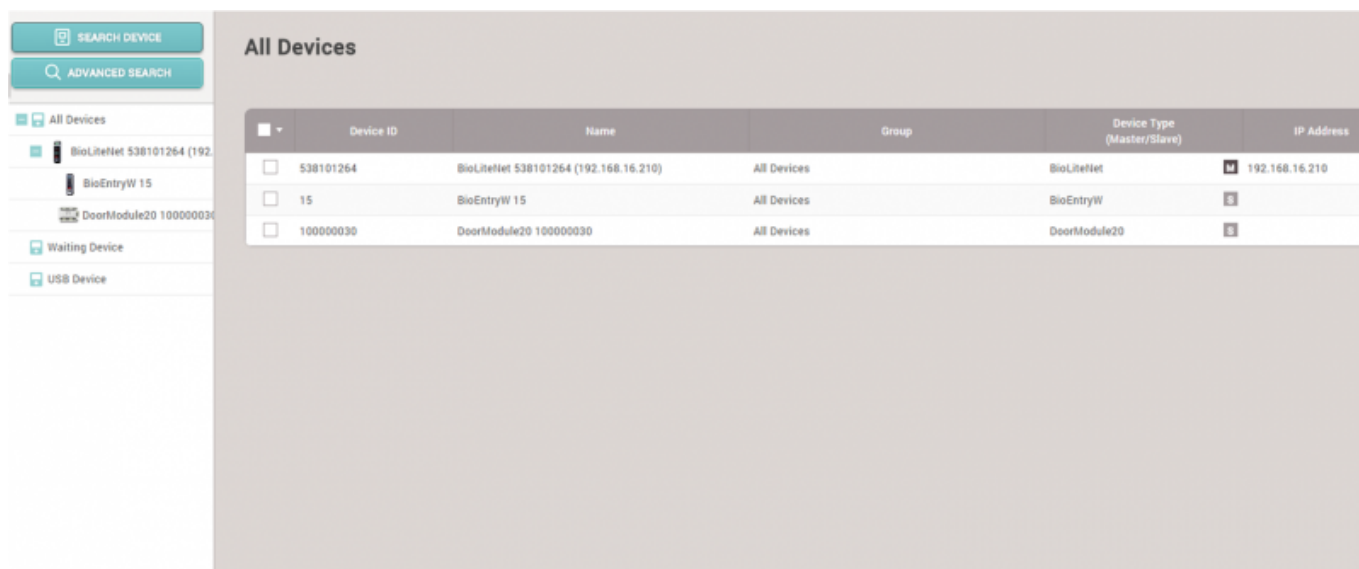
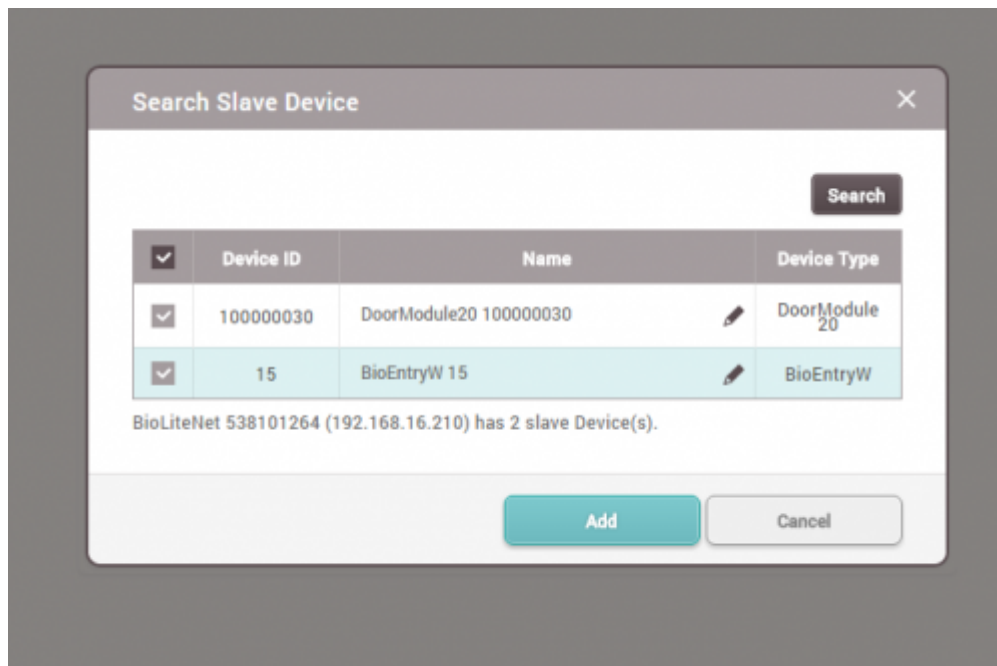
Context Menu Options:

- Add Wiegand Device
- Search Slave Device
- Reconnect
- Manage Users in Device
- Sync Device
- Reboot
- Delete Device

3. Check the search result and click **Add** button.

Up to 31 slave devices can be connected through a daisy chain, and up to 8 fingerprint devices can be connected among the total.

But, if there's a need of making many fingerprint matching with multiple devices at the same time, it's recommended to use the limited number of slave fingerprint devices for the optimal matching performance.



Video Demo

[devices.mp4](#)

From:

<http://kb.supremainc.com/knowledge/> -

Permanent link:

http://kb.supremainc.com/knowledge/doku.php?id=en:how_to_add_devices

Last update: **2021/12/29 14:23**