

Table of Contents

How to add devices 1

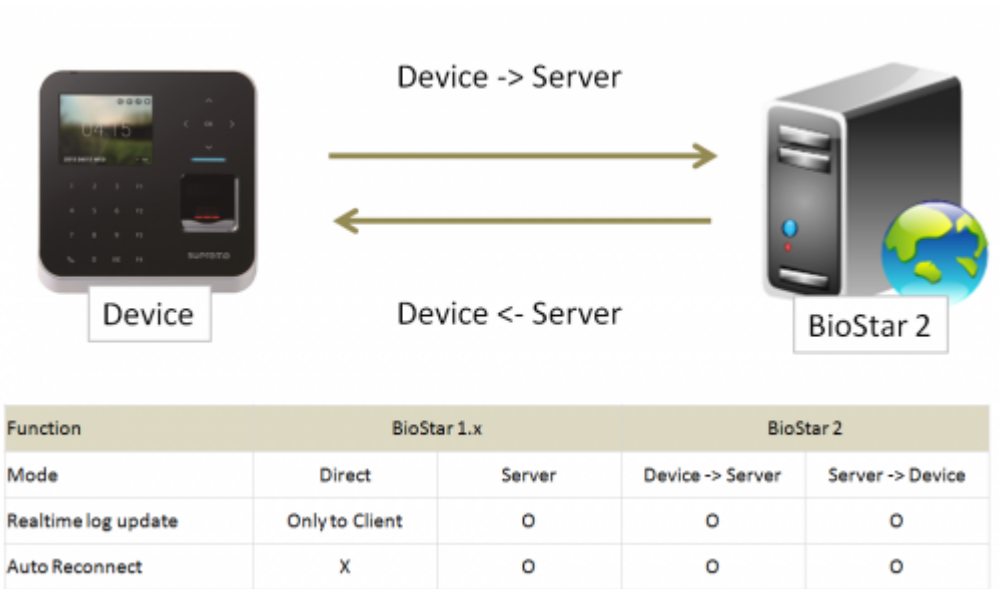
Add devices to the BioStar 2 server 1

Add slave devices connected through RS-485 interface 4

Video Demo 7

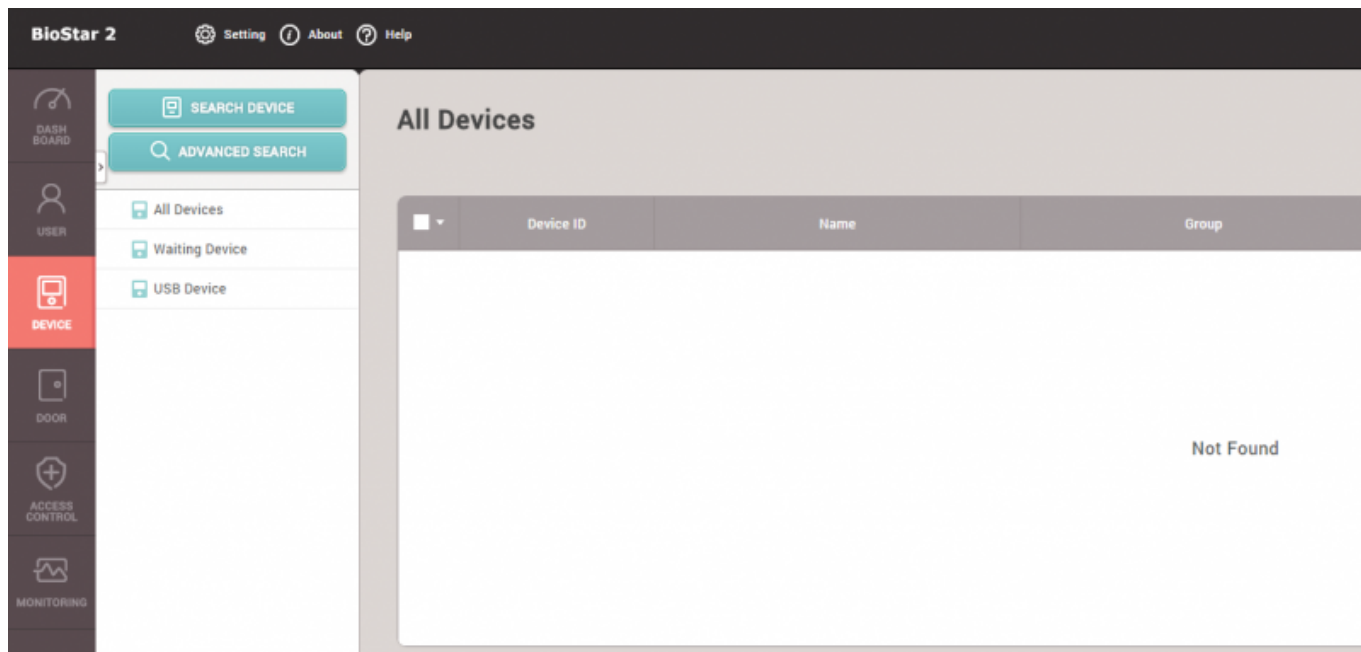
How to add devices

BioStar 2 supports two connection modes as the below image shows. Check the fundamental course contents for more information.



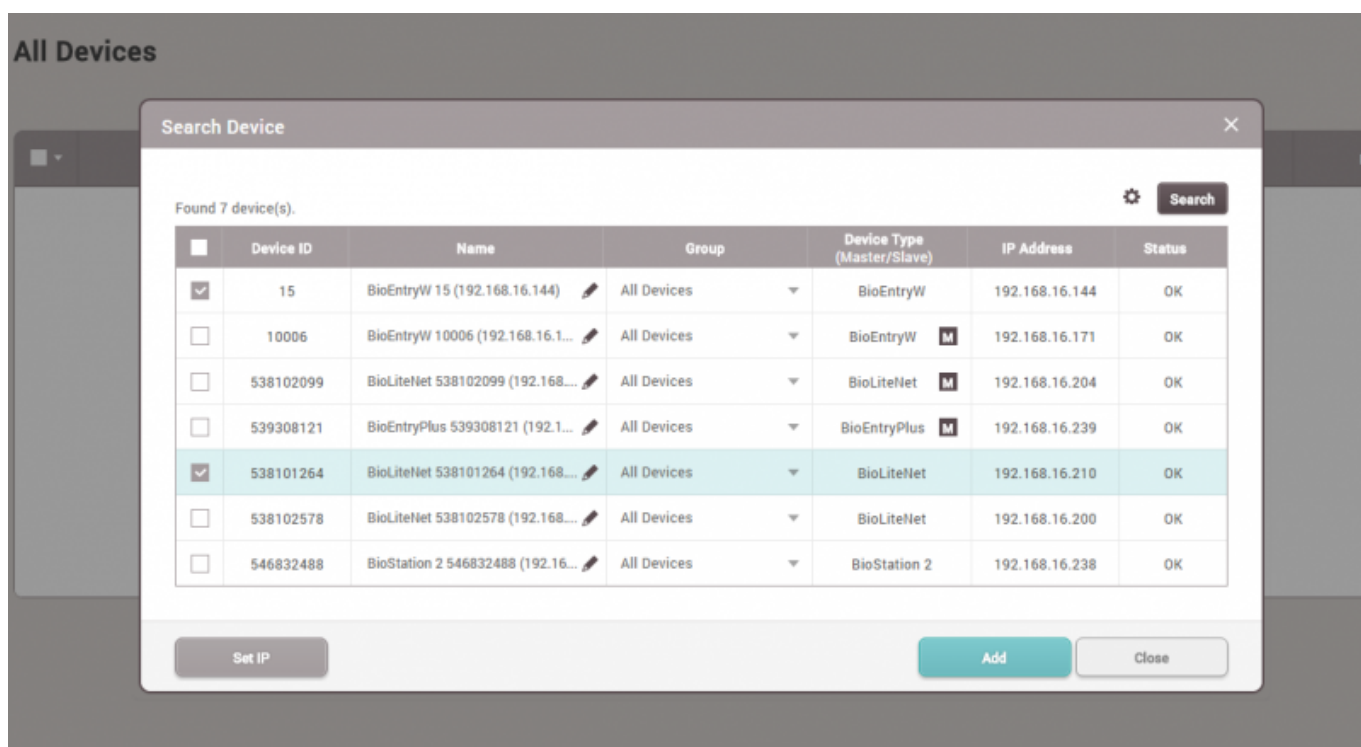
Add devices to the BioStar 2 server

1. Go to **Device** and click **Search Device**.

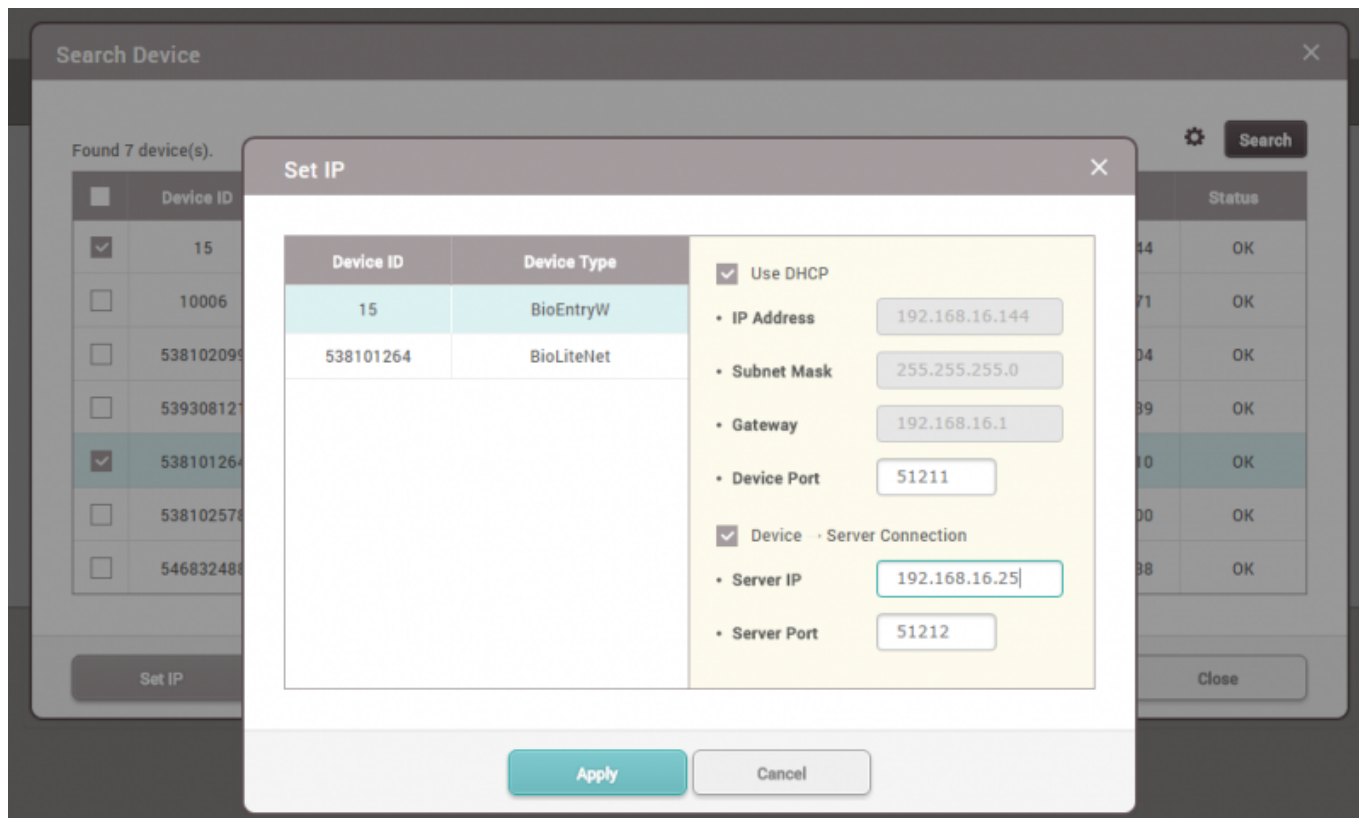


2. Select the devices to add to the server. BioStar 2 has two communication modes, **Device → Server** and **Server → Device**.

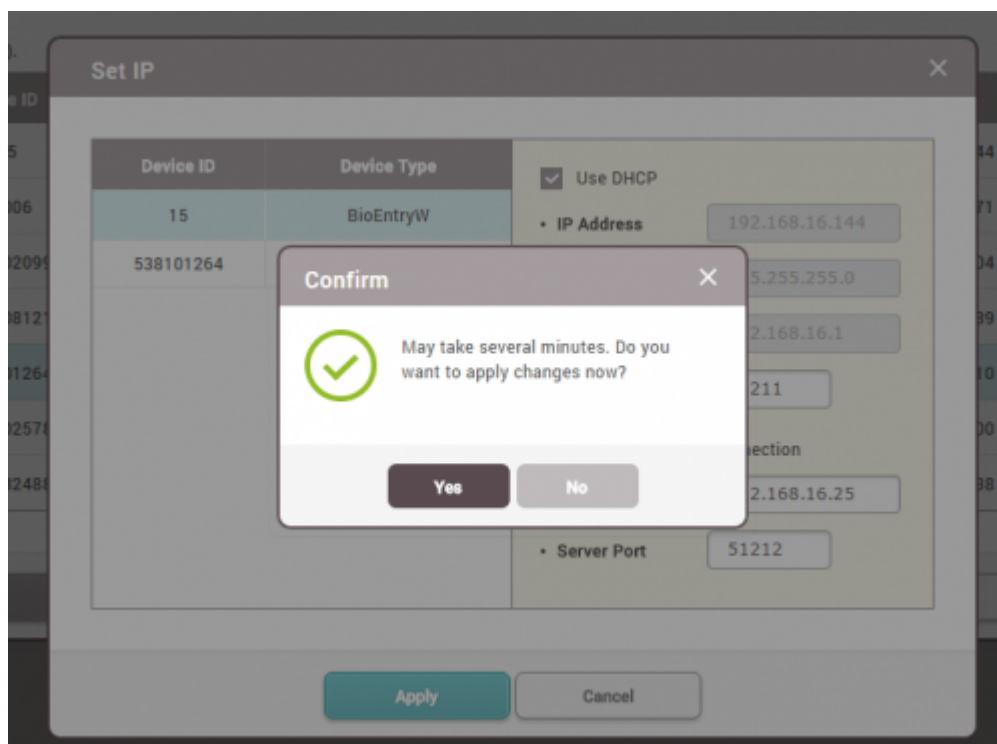
No functional difference between the two. But, **Device → Server** direction can protect the device connection not to be changed or disconnected from the designated server.



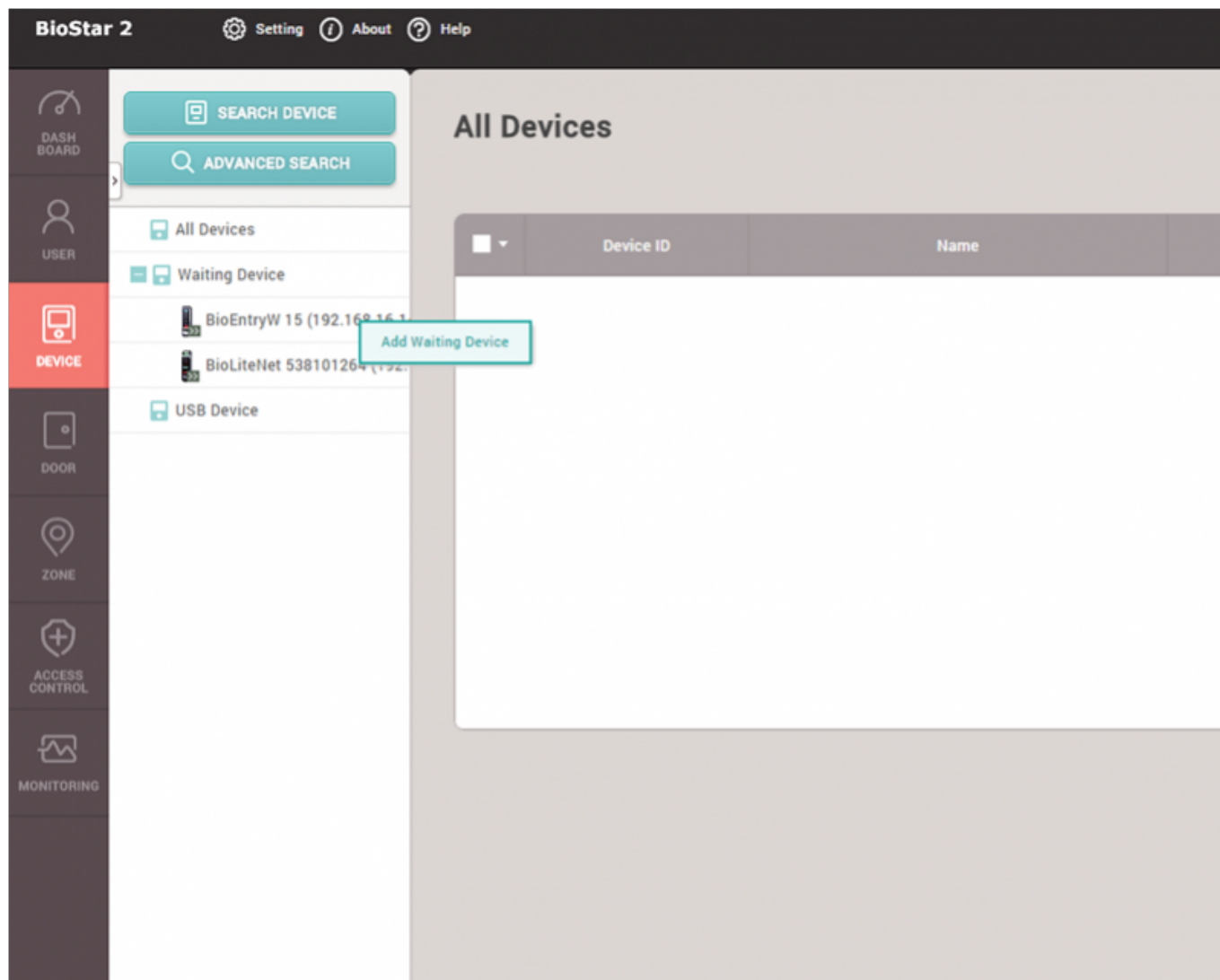
If you want to change the device IP address or their communication modes to **Device → Server**, click **Set IP** instead of **Add** button.



3. Set the server IP address and click **Apply**. Then, the device will automatically try to make a connection.



4. With the **Device → Server** direction, the device will be shown on the **Waiting Device** list. Refresh the browser to check the connectivity. Once you find the device, you can confirm and add them to the server by right clicking on the device tree and click **Add Waiting Device** button.



Add slave devices connected through RS-485 interface

1. Check the physical device connection, and change the device to be the master device in the device setting.

The screenshot displays the BioStar 2 configuration interface. On the left is a vertical sidebar with icons for USER, DEVICE (highlighted in red), DOOR, ZONE, ACCESS CONTROL, and MONITORING. The main content area is divided into four sections:

- Network**: Includes TCP/IP settings (Use DHCP checked, IP Address 192.168.16.210, Gateway 192.168.16.1, Support 100 BASE-T toggle set to Not Use) and Server settings (Device - Server Connection checked, Server IP 192.168.16.25). A dropdown menu for RS485 is open, showing options: Default, Master (highlighted in yellow), Slave, and Default (highlighted in light blue).
- Authentication**: Shows a table for Auth Mode with three rows, each containing a device icon, a plus sign, and the text 'Always'. A '+ Add' button is visible on the right.

- Master - Making a logical decision and control a local zone
- Slave - Become a dummy reader to send credential input to the master device

2. Change the device to be **Slave Mode** to be able to be searched by the master device. Connect to the master device through RS-485 cable, and check the physical wiring connection, and go to BioStar 2 and **DEVICE** tap and right click from the device tree and then click **Search Slave Device**.

Network

TCP/IP

- ☒ Use DHCP
- IP Address: 192.168.16.144
- Gateway: 192.168.16.1
- Support 100 BASE-T: ☐ Not Use

Server

- ☐ Device -> Server Connection
- Server IP: 0.0.0.0

Serial

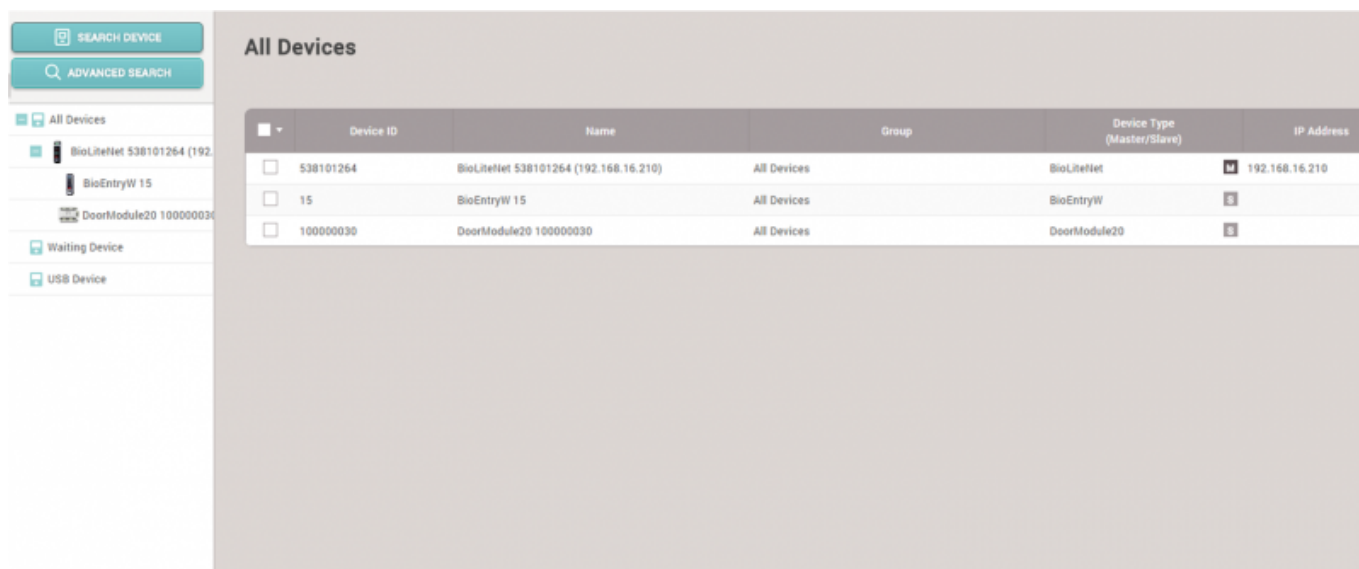
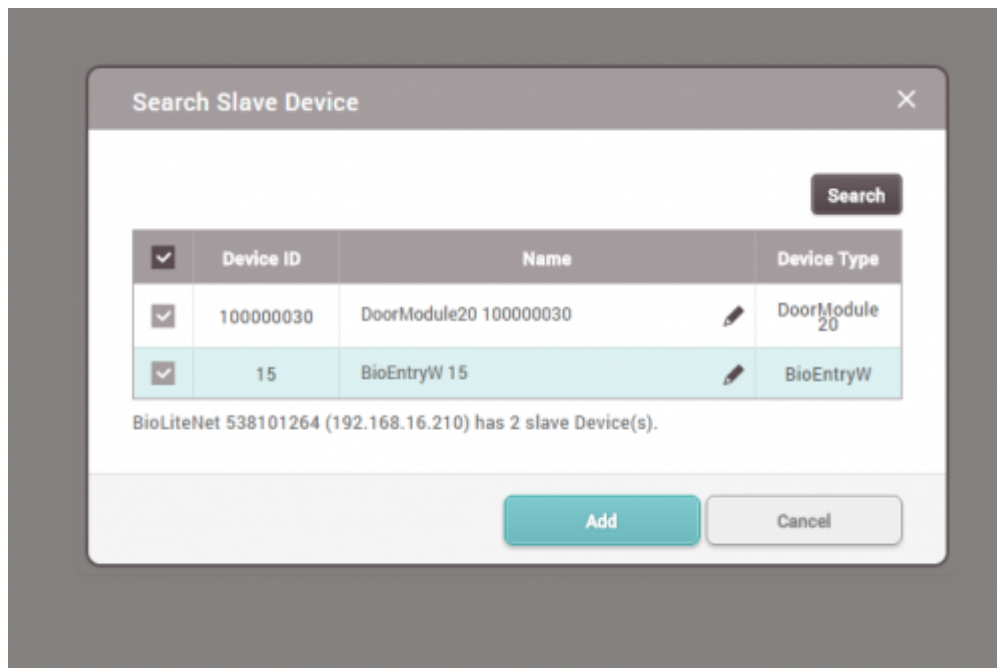
- RS485: Slave

BioStar 2 Setting About Help

All Devices

Device ID	Name	Group
8101264	BioLiteNet 538101264 (192.168.16.210)	All Devices

3. Check the search result and click **Add** button. Up to 31 slave devices can be connected through daisy chain, and up to 8 fingerprint devices can be connected among the total. But, if there's a situation of making many fingerprint matching with multiple number of devices at the same time, it's recommended to use the limited number of slave fingerprint devices for the optimal matching performance.



Video Demo

[devices.mp4](#)

From:

<http://kb.supremainc.com/knowledge/> -

Permanent link:

http://kb.supremainc.com/knowledge/doku.php?id=en:how_to_add_devices&rev=1467952617

Last update: **2016/07/08 13:36**