

Table of Contents

How to configure HTTP or HTTPS protocol	1
Configuration for HTTPS	2

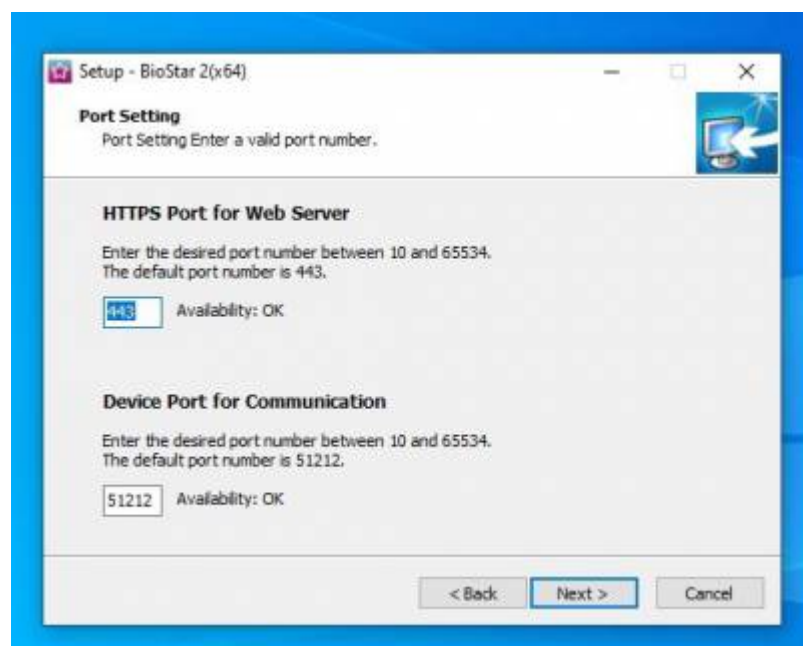
System Configuration, BioStar 2, HTTPS, "HTTP"

How to configure HTTP or HTTPS protocol

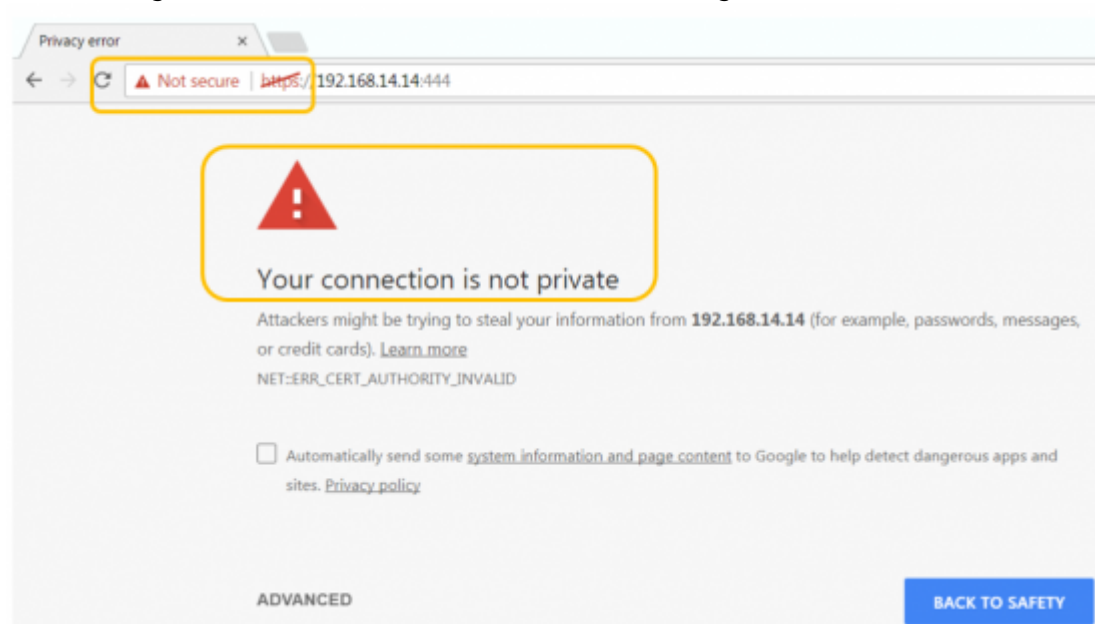
Starting BioStar 2.5, the default protocol that BioStar 2 web server uses is HTTPS to ensure better security in the communication between the server and client.

You can still change to HTTP, but no information will be encrypted in that communication protocol. Below is the port configuration for HTTPS you will see on installation.

Use a different port than 443 if it is being used.



Do not be alarmed when the connection to your BioStar 2 client shows as not secure. This is because the server's certificate has to be installed on the client PC first. Follow the guideline below to resolve the error message.



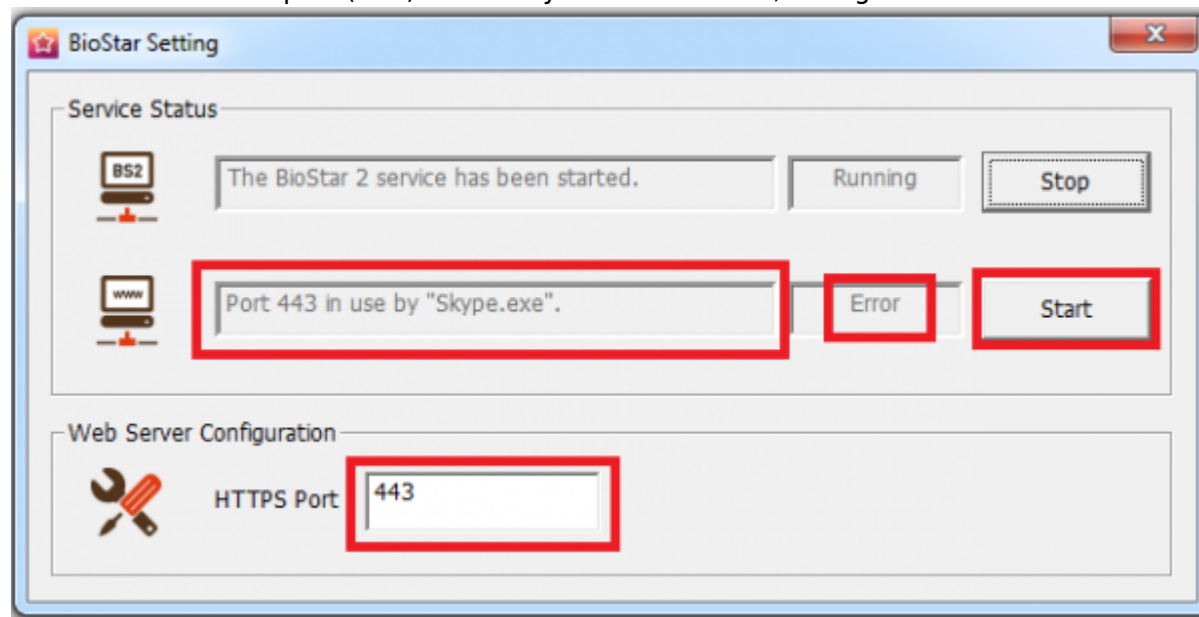
If you are going to use the HTTPS protocol, you must apply the certificate (steps 8 and

following). If the certificate is not applied, you will experience slowness and other erratic behavior on the web client such as no response to clicks.

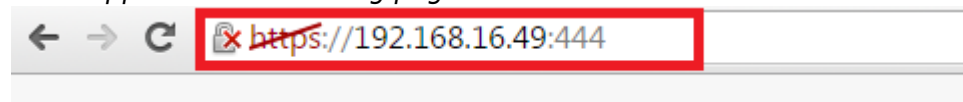
Configuration for HTTPS

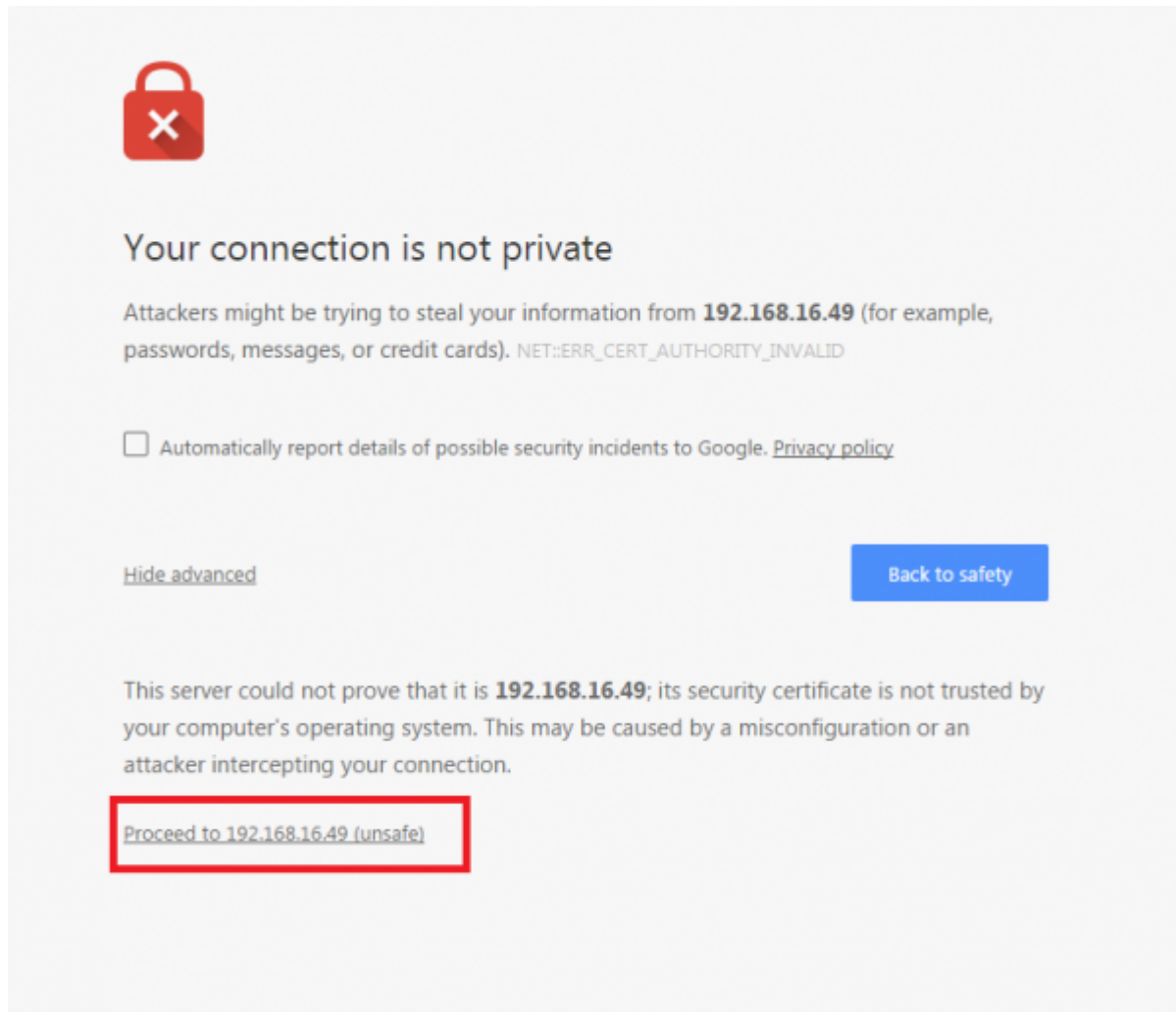
1. Open **BioStar Setting**.

If the default HTTPS port (443) is used by another service, change it to another value.



2. Open BioStar 2's web browser with `https:<server IP>:<port number>` on Chrome. It will appear with a warning page as below:



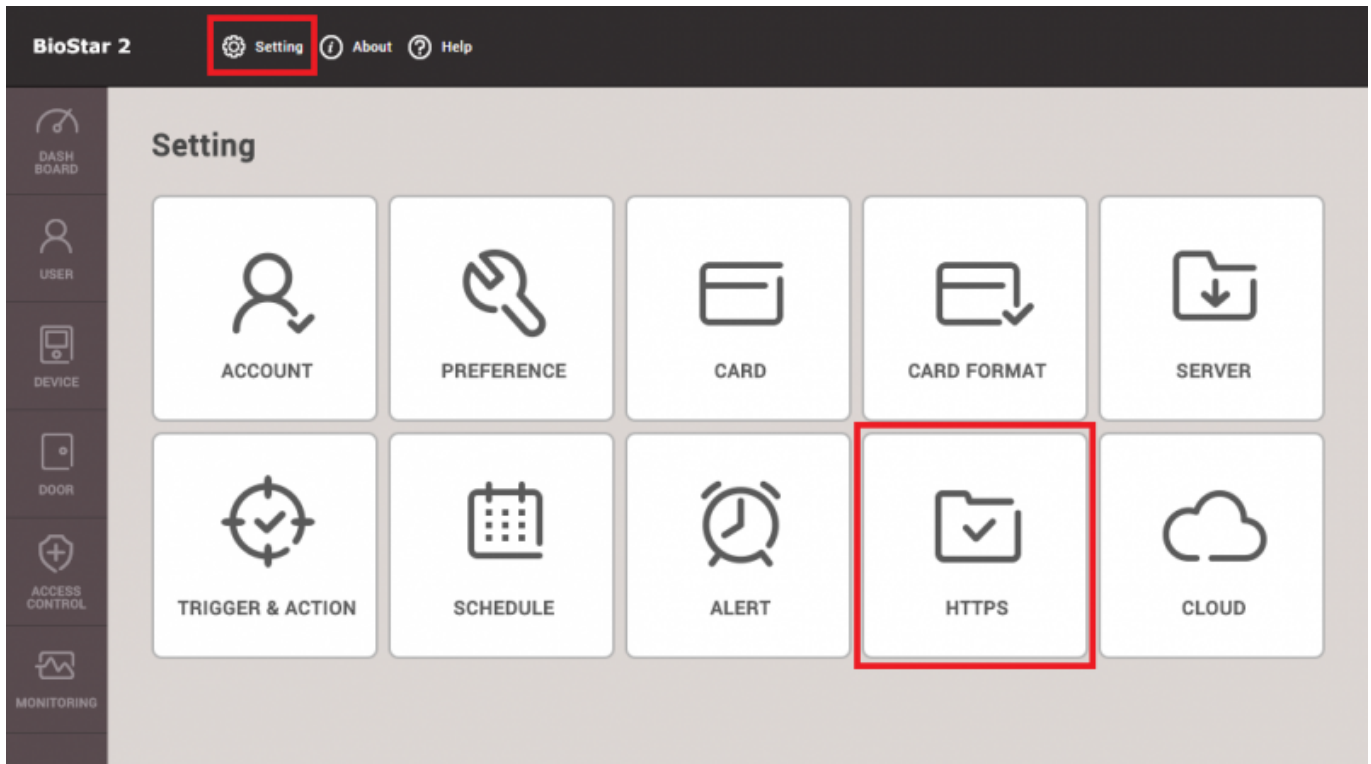


3. Click *Proceed to XXX.XXX.XX.XX (unsafe)*.

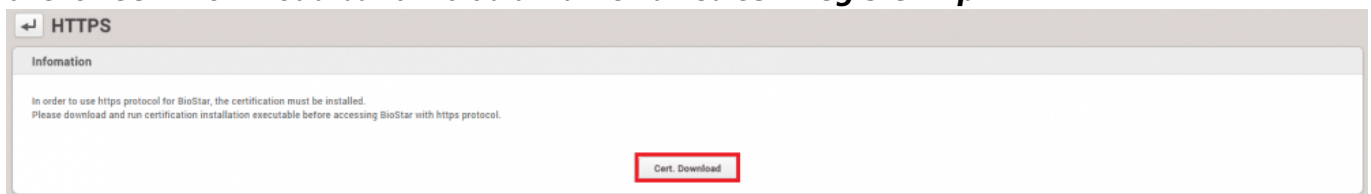
4. Log in with a BioStar 2 administrator account.



5. Go to **Setting** > **HTTPS**.



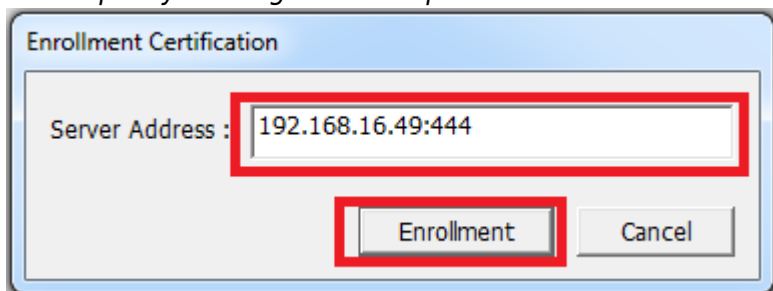
6. Click **Cert.Download** button to obtain a file named **cert-register.zip**.



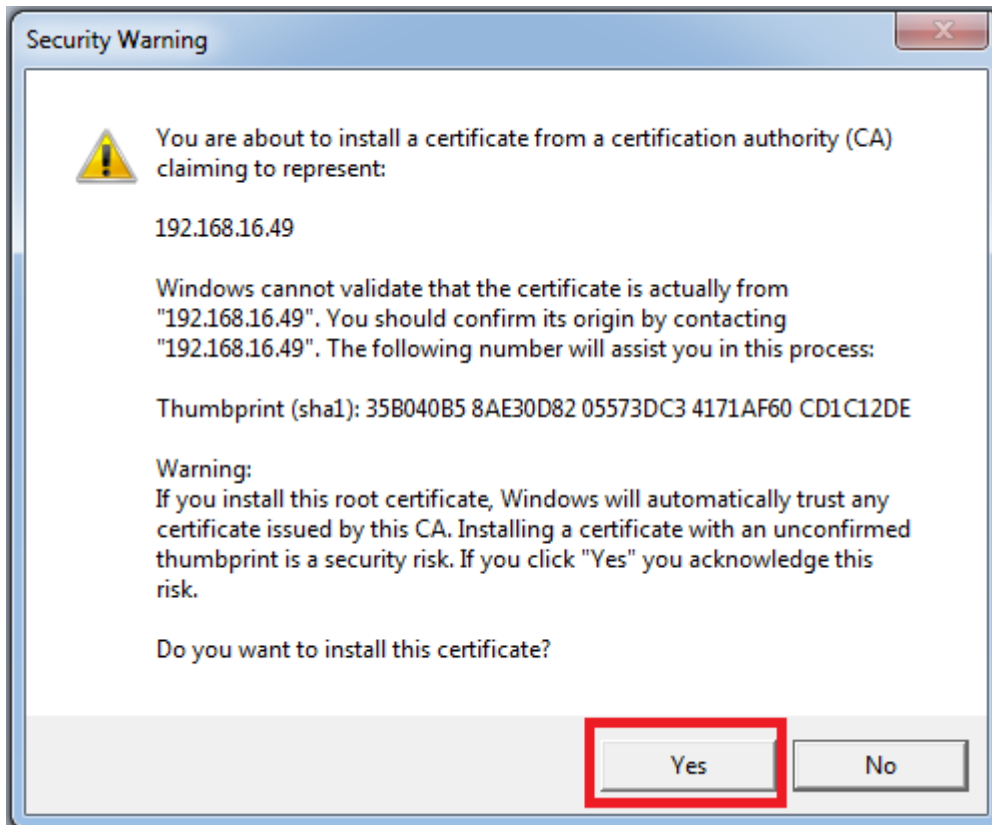
7. Unzip the **cert-register.zip** and run **cert-register.exe** file.

Name	Date modified	Type	Size
certmgr	12/29/2015 8:10 AM	File folder	
cert-register.exe	2/11/2015 4:57 PM	Application	2,211 KB

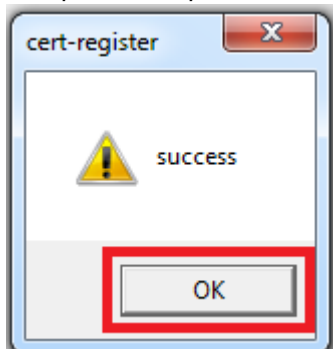
8. On the **Enrollment Certification** window, enter the IP address of BioStar 2 server along with the HTTPS port you assigned on step 4 and then click **Enrollment** button.



9. Read the **Security Warning** message and click **Yes**.



10. Once the tool has successfully installed the certificate, you will see the following window to complete the process. Please click **OK** to confirm it.



11. To verify the installation, restart the web browser and try to open the BioStar 2 web page. Make sure error message you encountered on step 2 is no longer presented.

To change the protocol from HTTP to HTTPS, refer to the article below:
[How to change from HTTP to HTTPS](#)

From:
<http://kb.supremainc.com/knowledge/> -

Permanent link:
http://kb.supremainc.com/knowledge/doku.php?id=en:how_to_configure_https_settings_for_the_web_client

Last update: 2021/12/20 13:57