

Table of Contents

How to use video

1

How to use video

Video integration of BioStar2 – It's simple integration to see recorded video and picture from NVR for certain log events.

For video/picture confirmation, Realtime monitoring is supported by BioStar2 in BioStar 2.6.2 and above.

Refer to the following article: [How to Configure Live Video View](#).

[video_menu.mp4](#)

Note: In BioStar 2.5, the video feature is only supported for the 64bit Maria DB version. It is not supported with 32bit and MSSQL DB. In BioStar 2.6 and above, video feature is supported with MSSQL database.

BioStar2 installation path stores a video file and an image file (C:\Program Files\BioStar 2(x64)\ve\records)

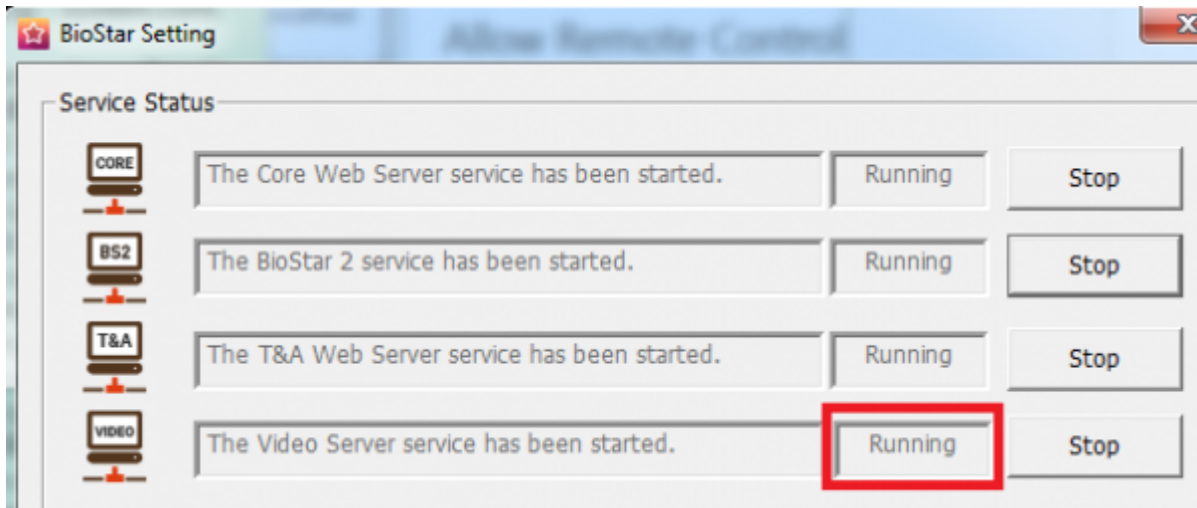
System administrator should manage the storage of HDD

These files will be kept for minimum 2 weeks as default parameter

The period can be adjusted more than 2 weeks (Maximum 15 weeks)

If the remaining storage of C drive is less than 10%, past recording files will be deleted in accordance with BioStar2 setting

1. Confirm if BioStar2 Server machine is installed on x64 machine.
2. Confirm if Video Server of BioStar Setting is running.

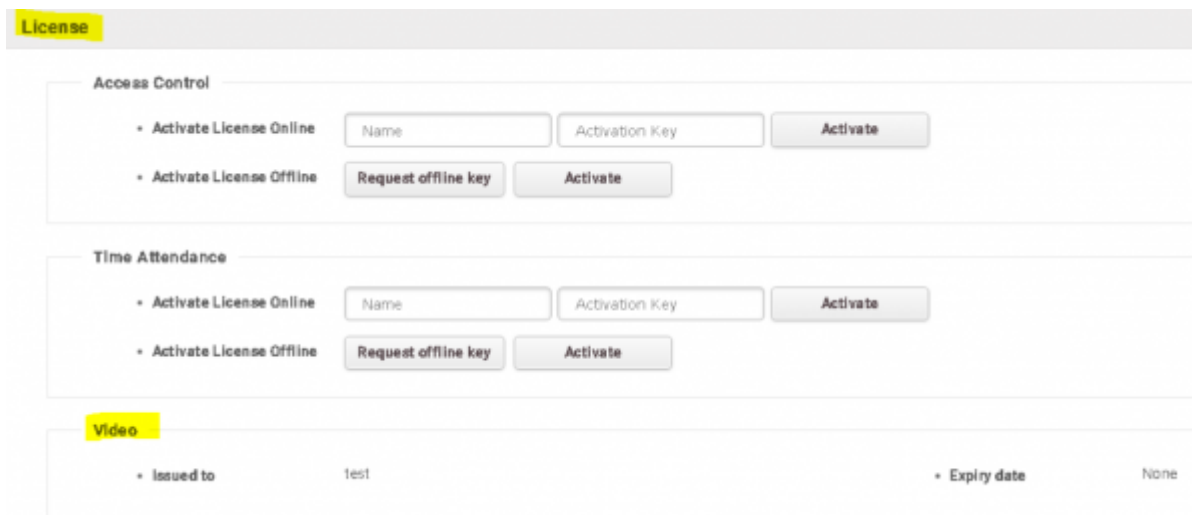


3. Confirm if a license of BioStar2 Video license is activated.

The activation of the Video License is different depending on the version of BioStar 2 Server:

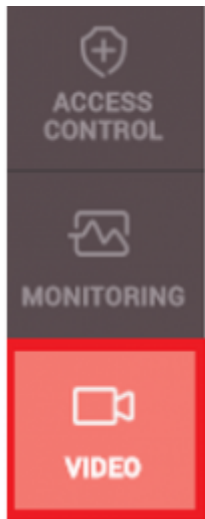
1- BioStar v2.6 or higher: Video * From BioStar 2.6, Video license is dedicated license, not included in the BioStar2 AC license (Needs Biostar Ac Advanced license)

2- Old version of BioStar v2.5: Video License is included in BioStar2 AC Standard License or above (note: upgrading to BioStar2 V2.8.14 or higher is highly recommended)



4. Confirm if you add a device and configure a door. Video configuration will operate in accordance with a log event of a configured door of a device.

5. Click on **[Video]** menu.



Supported NVR : ACTi, Dahua, Hikvision

Please confirm the following information and check your NVR connection with BioStar2 2.5 before you proceed your project.

1. Hikvision NVR

1) SDK version: v5.2.771

2) Tested NVR list : DS-7608NI-E2, DS-7616NI-E2, iVMS4200 v2.4(PC-NVR)

2. Dahua NVR

1) SDK version: v2.14.50523

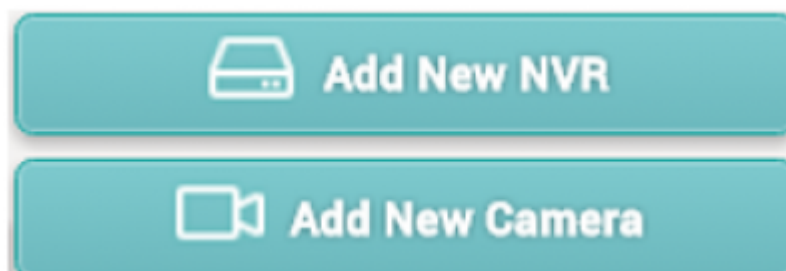
2) Tested NVR list : DH-NVR608-32-4K, DH-NVR4416, SmartPSS V1.13.1.R.20160504(PC-NVR)

3. Acti NVR

1) SDK version: v3.0.12.42

2) Tested NVR list : NVR3 V.3.0.13.27_20161128 Enterprise(PC-NVR)

6. Click **[Add New NVR]** > Enter information of NVR



Add New NVR

Name

NVR - 14F

Manufacturer

Dahua

IP

192.168.12.132

Port


ID

Password

Apply

Cancel

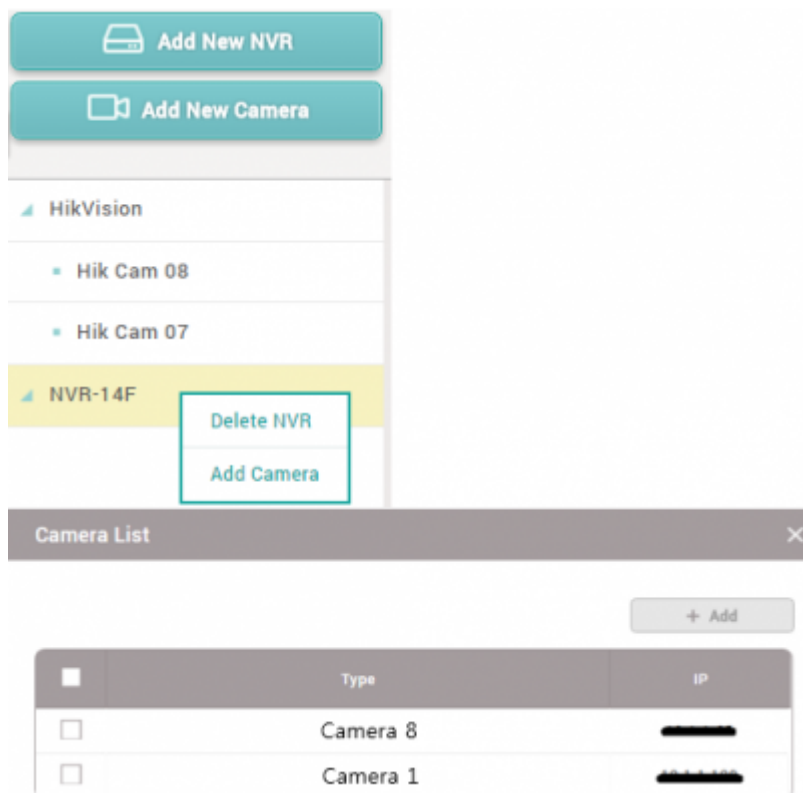
Add NVR



NVR added successfully.

Ok

7. To add a camera of NVR, click **[Add New Camera]** or right click on the NVR list.

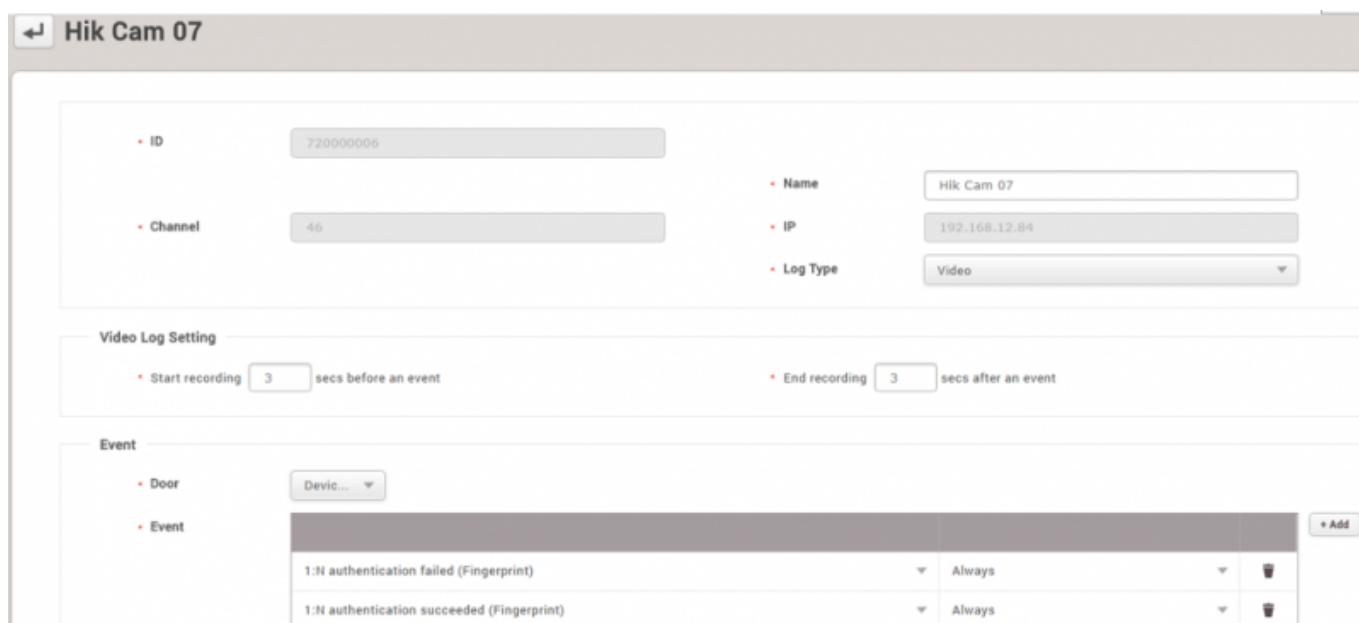


8. Click one of the added camera and confirm the camera and configure certain log event to take a video or picture

Log type: Choose one of log types. It supports Video type and Image type

Door: Choose one of doors to take a video/image from NVR

Event: Choose certain logs from all log list. Biostar2 will keep the recorded video/image for the certain logs



9. Make the certain log event to check the settings with NVR

Biostar2 will indicate the video/image after 3 mins.

10. Go to **Monitoring** menu and click **Event log**

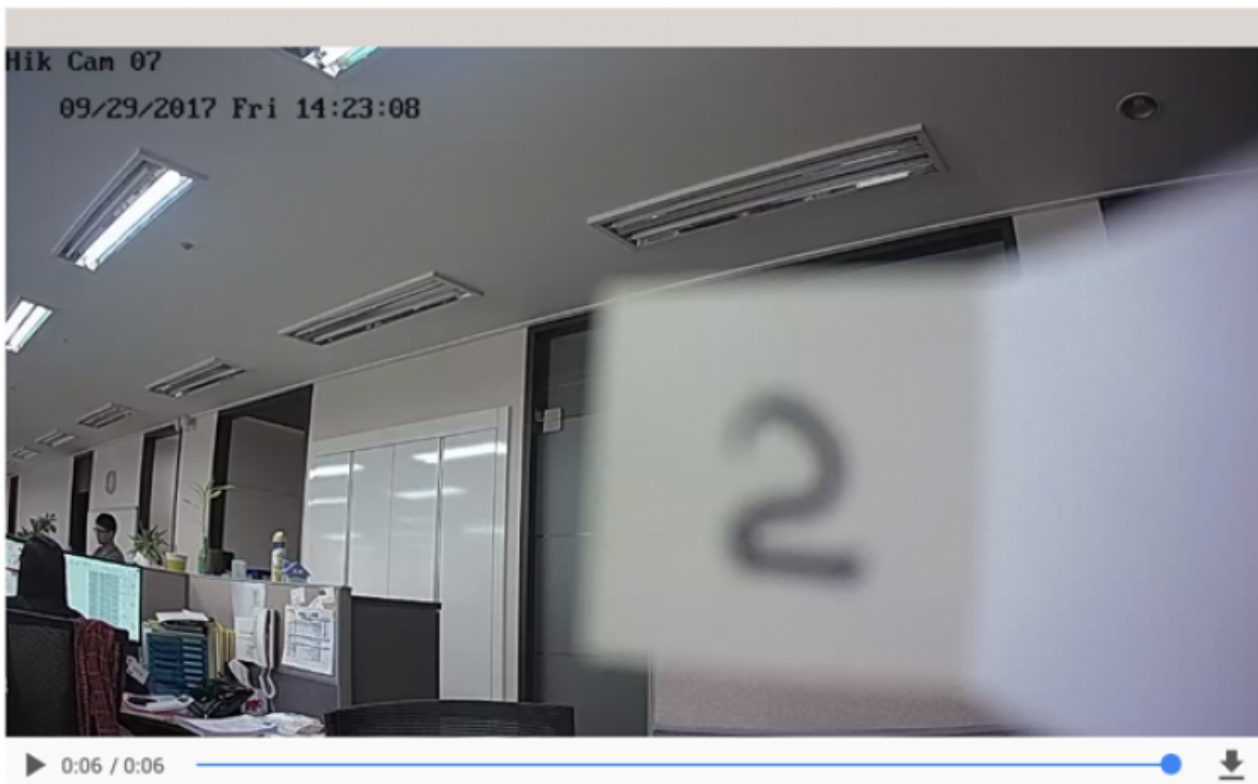
11. Confirm the log event and see **[view]** list. To confirm the recorded data from NVR, click [▶] or an image icon to the view list.

The screenshot displays the 'Event Log' interface. On the left, there is a sidebar with navigation options: Event Log, Real-time Log, Device Status, Door Status, Floor Status, Zone Status, and Alert History. Below these is a small video player showing a door with the number '2'. The main area shows a table of events with columns: Date, Device ID, Device, User Group, User, Event, and View. The table lists various events such as 'Door unlocked', '1:N authentication succeeded', and '1:N authentication failed'. Two icons in the 'View' column are highlighted with red boxes: a play button (▶) and a camera icon (📷). At the bottom left, there is a 'Large Screen' button.

Date	Device ID	Device	User Group	User	Event	View
2017/09/29 14:23:12	546832513	BioStation 2 546832513 (...)			Door unlocked	
2017/09/29 14:23:12	546832513	BioStation 2 546832513 (...)	All Users	2449(Kate Yu)	1:N authentication succeeded (Fin...	▶
2017/09/29 14:23:09	546832593	BioStation 2 546832593 (...)			Door unlocked	
2017/09/29 14:23:09	546832593	BioStation 2 546832593 (...)	All Users	2449(Kate Yu)	1:N authentication succeeded (Fin...	
2017/09/29 14:23:08	546832513	BioStation 2 546832513 (...)			Door locked	
2017/09/29 14:23:08	546832513	BioStation 2 546832513 (...)			1:N authentication failed (Fingerpri...	
2017/09/29 14:23:06	546832593	BioStation 2 546832593 (...)			1:N authentication failed (Fingerpri...	▶
2017/09/29 14:23:05	546832513	BioStation 2 546832513 (...)			Door unlocked	
2017/09/29 14:23:05	546832513	BioStation 2 546832513 (...)	All Users	2449(Kate Yu)	1:N authentication succeeded (Fin...	▶
2017/09/29 14:23:02	546832593	BioStation 2 546832593 (...)			1:N authentication failed (Fingerpri...	📷
2017/09/29 14:16:30	700000004	Dahua_d700000004			Add NVR successful	
2017/09/29 14:16:29	700000004	Dahua_d700000004			Add NVR	
2017/09/29 14:14:46	546832513	BioStation 2 546832513 (...)			1:N authentication failed (Fingerpri...	
2017/09/29 14:14:45	546832513	BioStation 2 546832513 (...)			Door locked	
2017/09/29 14:14:42	546832593	BioStation 2 546832593 (...)			1:N authentication failed (Fingerpri...	▶
2017/09/29 14:14:42	546832593	BioStation 2 546832593 (...)			Door locked	

12. If you click on [Large screen] from the left side, you can confirm large size of video file/image file.

1:N authentication failed (Fingerprint)



- Date 2017/09/29 14:23:06
- Device BioStation 2 546832593 (192.168.14.203)
- NVR HikVision
- Channel 46

From:

<https://kb.supremainc.com/knowledge/> -

Permanent link:

https://kb.supremainc.com/knowledge/doku.php?id=en:how_to_configure_video_menu

Last update: **2022/04/01 21:10**