

Table of Contents

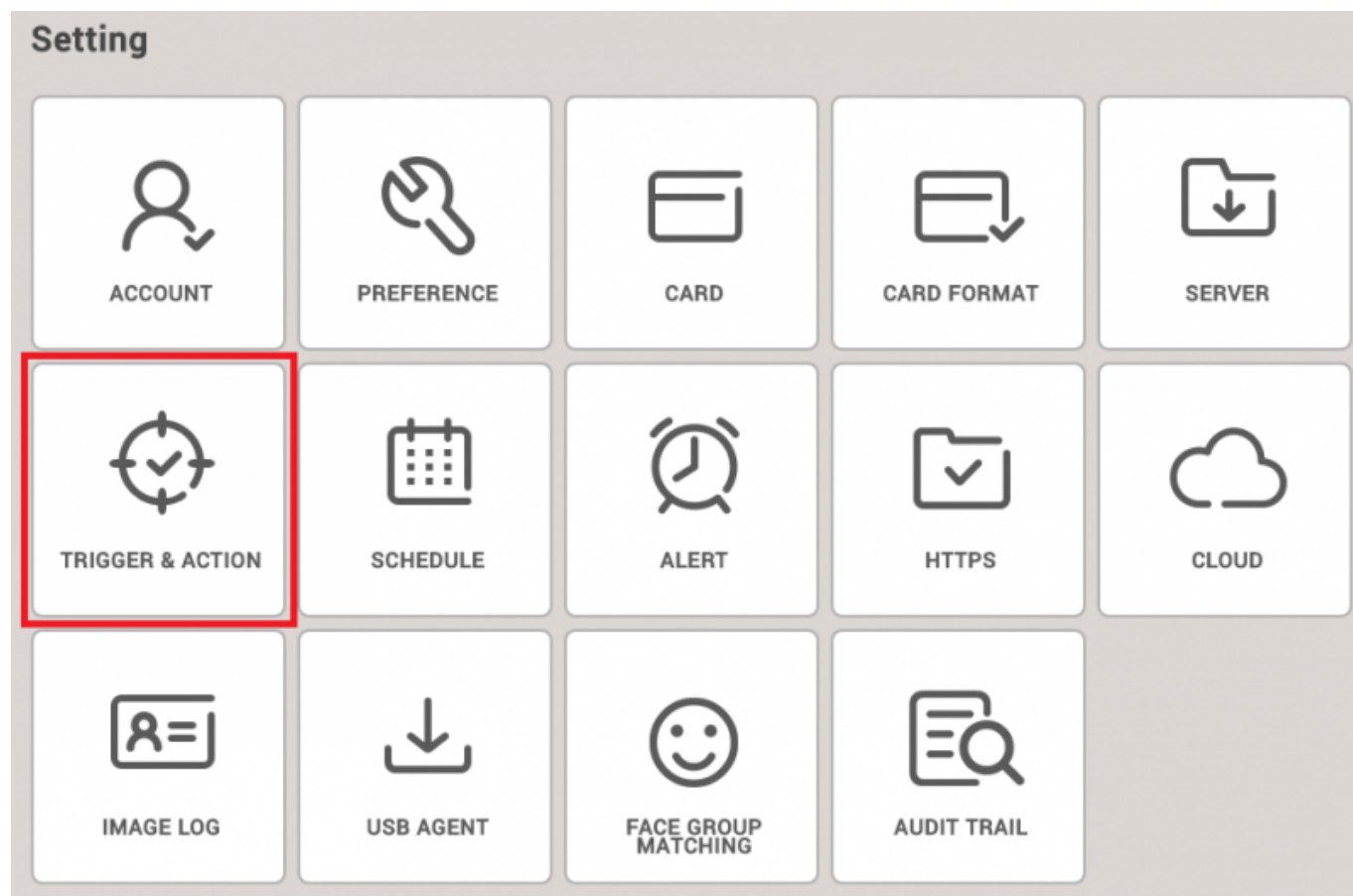
How to send Email when a device is disconnected 1

[System Configuration, BioStar 2](#)

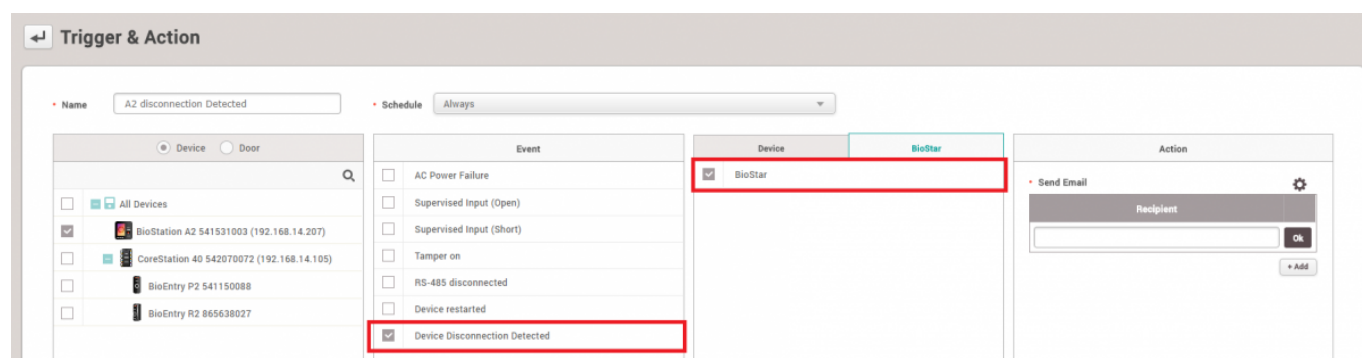
How to send Email when a device is disconnected


From BioStar 2.5.0, you can configure an Email about the device disconnection detected. When a device is disconnected, the email will be sent to a recipient you set.

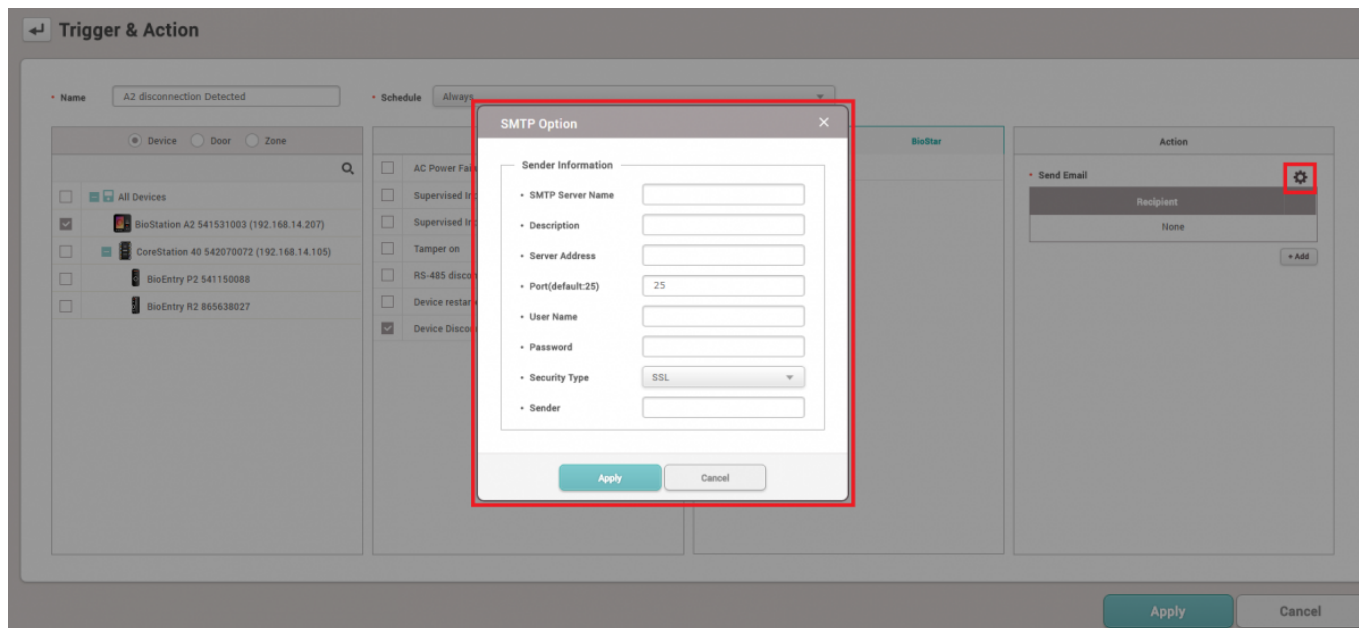
Go to **Setting > Trigger & Action**.



Select the certain device. Then, check the box named **Device Disconnection Detected** and **Biostar**.



Click  to configure the email server information. Then, type the information on your email server.



When it comes to setting of SMTP Option, refer to below screenshot. If you are not sure what the settings are, please ask your IT administrator.

SMTP Option

Sender Information

• SMTP Server Name

Hailey admin email

• Description

gmail

• Server Address

smtp.gmail.com

• Port(default:25)

465

• User Name

jypark@suprema.co.kr

• Password

••••••••

• Security Type

SSL





• Sender

jypark@suprema.co.kr

Apply

Cancel

Add a Recipient and click **Apply** button.


Action					
• Send Email 					
<table border="1"><thead><tr><th colspan="2">Recipient</th></tr></thead><tbody><tr><td>jypark@suprema.co.kr</td><td></td></tr></tbody></table>		Recipient		jypark@suprema.co.kr	
Recipient					
jypark@suprema.co.kr					
<div>+ Add</div>					

When the device is disconnected, an email titled "[BioStar Alert] Device Disconnection Detected" will be set to the recipient you add.

[BioStar Alert] Device Disconnection Detected



Biostar Alarm Manager <jypark@suprema.co.kr>

나에게 

Datetime: 2017-09-28 17:32:55(+09:00)

Server Datetime: 2017-09-28 17:32:55

Event: Device Disconnection Detected

Device ID: 541531003

Device Name: BioStation A2 541531003 (192.168.14.207)

From:

<https://kb.supremainc.com/knowledge/> -

Permanent link:

https://kb.supremainc.com/knowledge/doku.php?id=en:how_to_send_email_when_a_device_is_disconnected&rev=1507783142

Last update: **2017/10/12 13:39**