

Table of Contents

How to use Mobile App Widget function 1

Video Demo 3

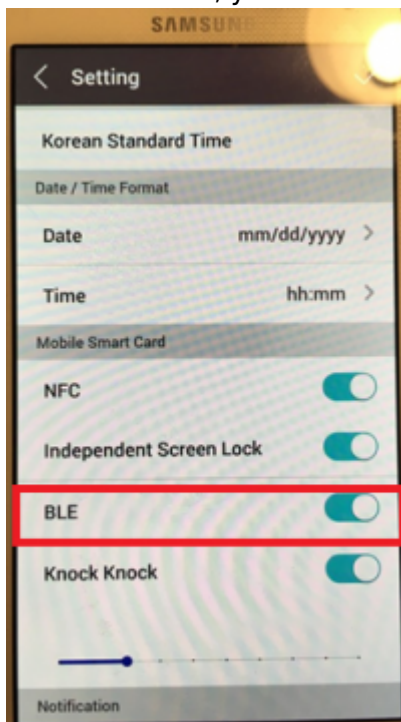
[System Configuration](#), [BioStar 2](#), [Mobile](#), [Widget](#), [App](#)

How to use Mobile App Widget function

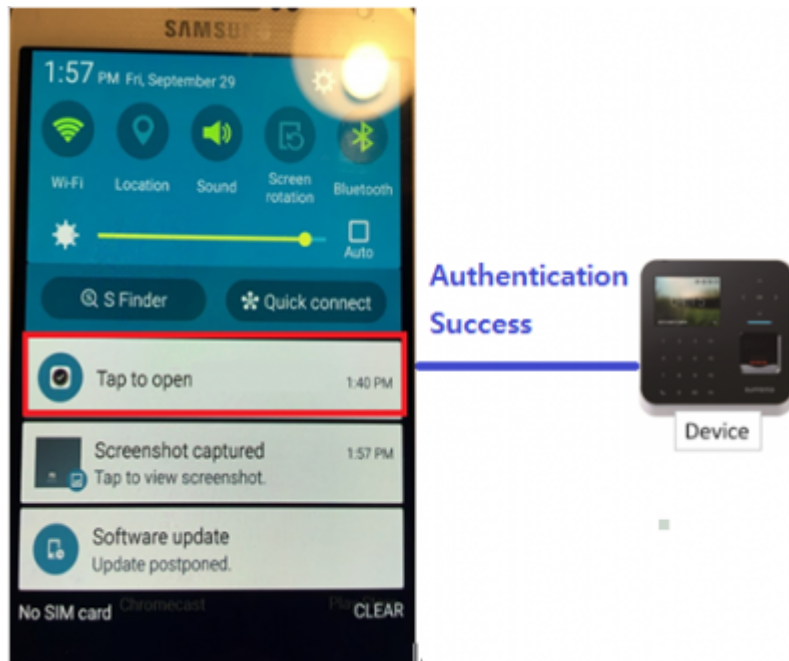
Mobile App Widget function is supported on BioStar mobile application version V2.5 or higher.

Android

Once you install your smart phone then you will see BioStar application on your widget menu. Also, to use this feature, you need turn on BLE option.

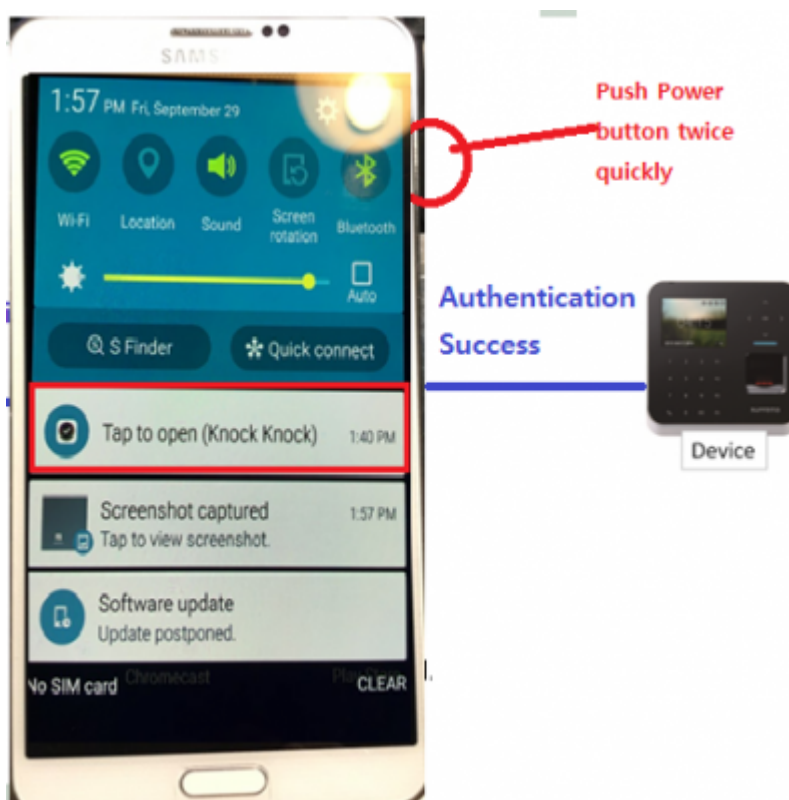


Widget BioStar menu which performs BLE scanning by user clicking 'Tap to open'.



Knock Knock Option - Enabling BLE with power button

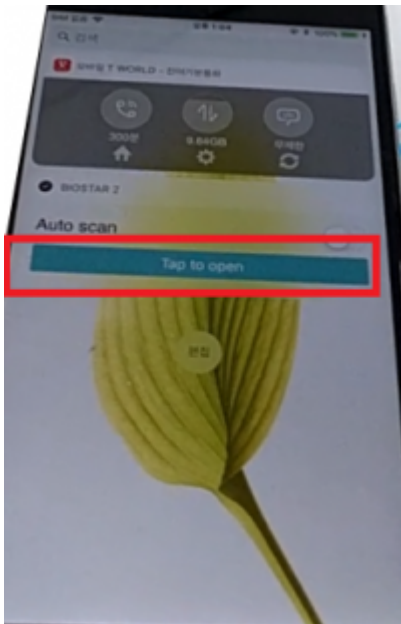
Also, you user can push Power button twice quickly(within 3 sec) using Knock Knock feature. This feature works even the smart phone is locked. When Knock Knock option is on, widget menu shows 'Knock Knock'.



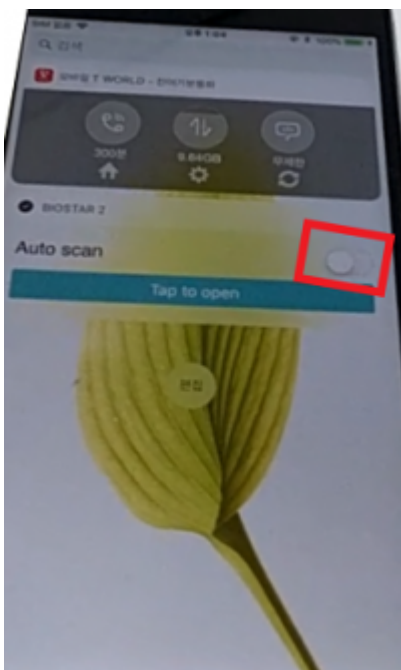
When BLE is connected, the smart phone vibrates shortly(200ms) first and it will vibrates longer(1000ms) when it communicates successfully. When communication is failed, it vibrates shortly again(200ms).

iOS

To use Widget function on iOS, user needs to add widget menu on iOS setting. (On widget>Edit)
iOS doesn't support Knock Knock feature but still you can use turn on BLE scanning by clicking 'Tap to open'.



Also, if you toggle 'Auto can' button, then application will automatically start BLE scanning when widget menu exposes on the screen.



Video Demo

Android

[auth-android.mp4](#)

iOS

[auth-iphone.mp4](#)

From:

<http://kb.supremainc.com/knowledge/> -

Permanent link:

http://kb.supremainc.com/knowledge/doku.php?id=en:how_to_use_mobile_app_widget_function&rev=1568158568

Last update: **2019/09/11 08:36**