

Table of Contents

BioStar 2 Installation Case - GKL 1

System Overview 1

Technical Challenges 1

Construction Challenges 2

Installation Photos 3

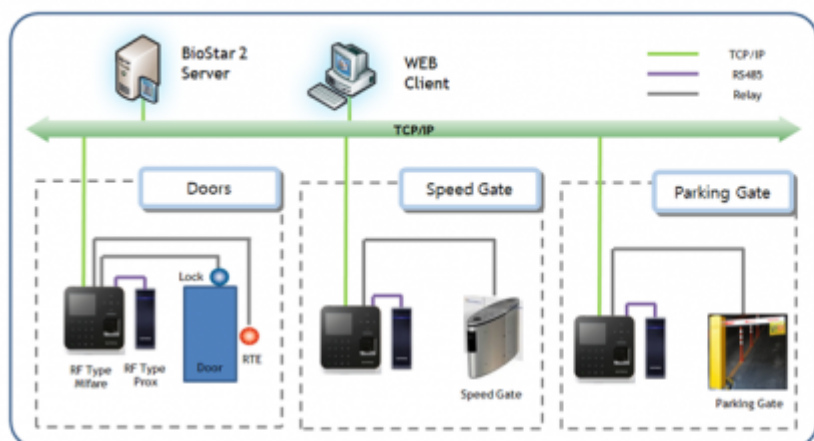
BioStar 2 Installation Case - GKL

- Site Name: GKL(Grand Korea Leisure)
- Location: South Korea
- Vertical Type: Office Building
- Application Type: Access Control
- No of Device: 39 units of BioStation 2, 39 units of Xpass
- Installation Time : Q3 2015

System Overview

The customer was using two card types, Mifare and HID Prox, and wanted to use the access control system covering the both card types and future biometric demand.

The Suprema domestic team made a natural appearance with a combination of BioStation 2 device for Mifare card type and Xpass for Hid Prox card type.



BioStar 2

- BioStar2 SE (Standard Edition)
- Up to 1,000 Devices & Doors
- Web based system (100 Client Access)
- 128 Time Schedule, 128 Access Group
- Fire Alarm / Anti-passback
- TCP/IP, RS485 Network

BioStation 2



- Mifare Type(13.56MHz)
- Optical Sensor
- IP 65 Rate
- 2.8" QVGA LCD
- Max 500,000 users
- Max 3,000,000 logs
- TCP/IP, RS485, Wiegand, USB

Xpass-v2



- HID Prox Type(125KHz)
- IP65 Rate
- Power over Ethernet
- Max 40,000 users
- Max 50,000 logs
- TCP/IP, RS485, Wiegand



Technical Challenges

The customer was a bit confused with 'Lock' button in the monitoring section of BioStar 2 client. They have mistakenly thought 'Lock' is just to lock a door and did not expect the lock status stays and could not be unlocked even after an auth success event. This confusion was mainly caused by the

BioStar 1.x usage, because BioStar 1.x does not work as the same as BioStar 2.

In order not to induce such confusion, BioStar 2 has the changed new names, 'Manual Lock' and Manual Unlock' with 'Release' button from 2.2v. With this change, users can expect more intuitive usage and less confusion.

Tips: 'Lock' functions to continue the locked status regardless of authentication results. It's useful when the doors should be locked and stayed in that status. In order to return to the original status, users need to press 'Open' button (BioStar 2 2.1v version or before) or 'Release' button (BioStar 2 2.2v or higher).

2.1v



2.2v

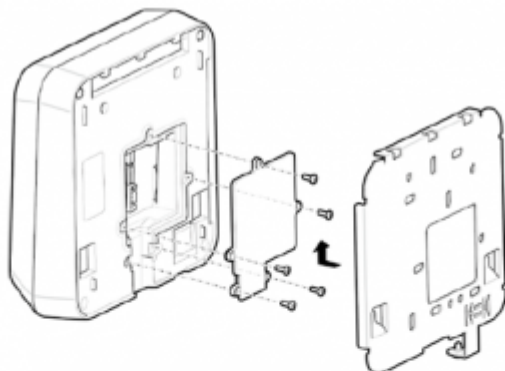


Construction Challenges

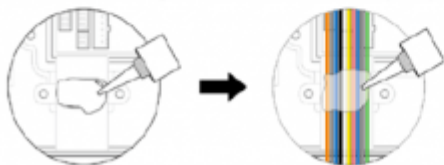
At the parking gate, the devices were located outside protected by their enclosure. The installer did not attach the back cable cover of BioStation 2, and it had a chance to have water leakage if there were a heavy rain. Fortunately, the project manager noticed this situation right after the installation and directed to apply the cover to the back of BioStation 2.



BioStation 2 supports IP65 rate, but it's necessary to apply its back cover to use IP65 feature at outdoor. Otherwise, the device could be affected by water and dust that come from bottom or behind of the device.

**Note**

- If the cable cover is not assembled, waterproof/dustproof performance will not be guaranteed.
- To ensure the IP65 rating, apply the liquid silicone underneath and above the cables within the groove approximately 10mm. Then, assemble the cable cover. The IP65 rating means that the BioStation 2 is totally dust proof and resistant to lower pressure water jets.



Installation Photos







From:

<http://kb.supremainc.com/knowledge/> -

Permanent link:

http://kb.supremainc.com/knowledge/doku.php?id=en:tc_case_biostar_2_installation_case_gkl

Last update: **2016/07/08 13:03**