

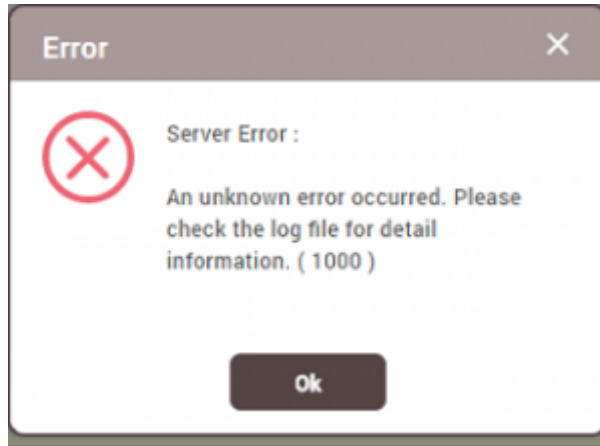
BioStar 2 '1000' 1
..... 1

BioStar 2

'1000'

BioStar V2.3.0 (V1 API)
V2 API , BioStar

가 BioStar V2.4.0 (V2 API)
V1 API



1. BioStar 2

2. PC

- C:\Program Files\BioStar 2(x64)

3. **setting.conf**

4. **cloud** (version, use_cloud, account_id)

```

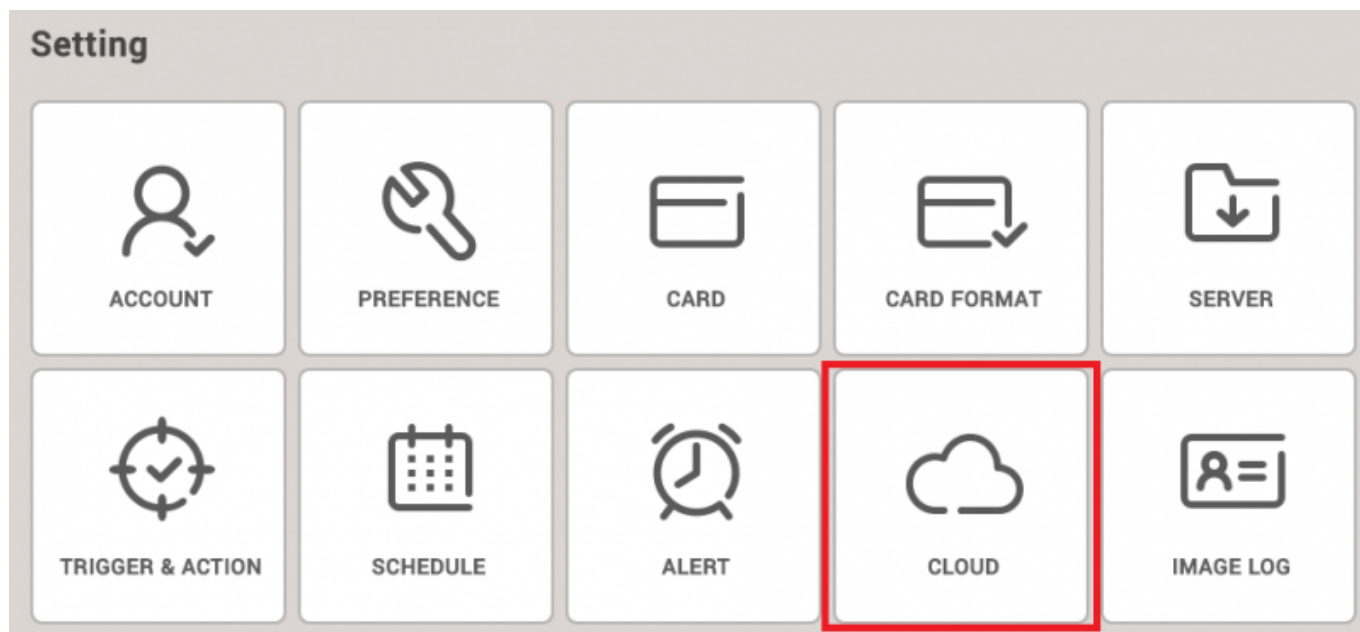
"version": "v2"
"use_cloud": "0"
"account_id": ""

```

```
setting.conf - Notepad
File Edit Format View Help
{
  "BioStar": {
    "tna": {
      "use_tna": "true",
      "http_port": "3000",
      "https_port": "3002",
      "ngrok_port": "51000"
    },
    "http": {
      "port": "82"
    }
  },
  "cloud": {
    "version": "v2",
    "use_cloud": "0",
    "server_address": "api.biostar2.com",
    "http_port": "52000",
    "sub_domain": "hailey123",
    "email": "jypark@suprema.co.kr",
    "account_id": ""
  },
}
```

5. BioStar 2

6. BioStar 2 (CLOUD)



From:

<https://kb.supremainc.com/knowledge/> -

Permanent link:

https://kb.supremainc.com/knowledge/doku.php?id=ko:how_to_resolve_the_server_error_1000_with_biostar_2_cloud

Last update: **2018/07/13 11:47**