

# Table of Contents

How to use Lift I/O .....	1
Wiring .....	1
Adding the Lift I/O in BioStar .....	1
Setting the Lift I/O in BioStar .....	3

## BioStar 1, Lift I/O

# How to use Lift I/O

In this document, we would like to introduce how to use Lift I/O in BioStar. Lift I/O is used to control access to the floors serviced by an elevator. This is carried out by wiring the Lift I/O and Suprema devices, so that Suprema devices determines and sends a signal to Lift I/O whether or not the user can be accessed and which floors can be selected. Please note that Lift I/O is compatible with Xpass, Xpass Slim, BioEntry Plus and BioEntry W only.

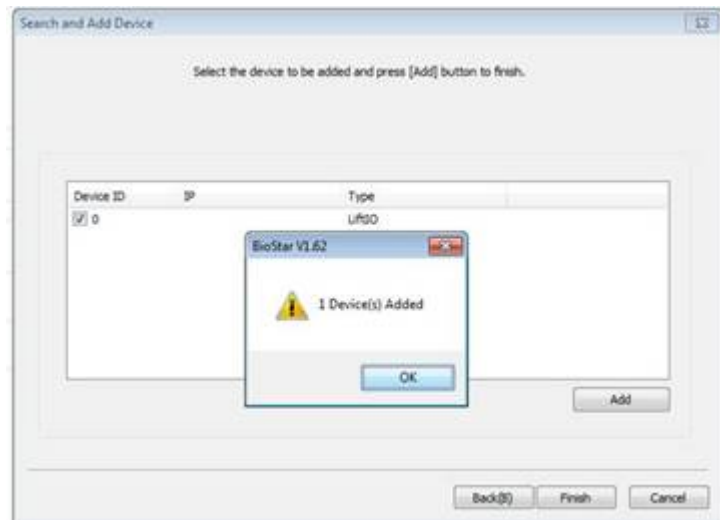
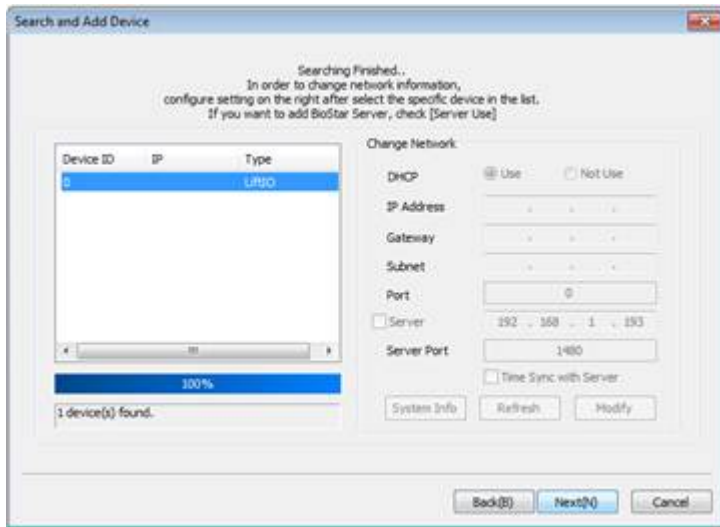
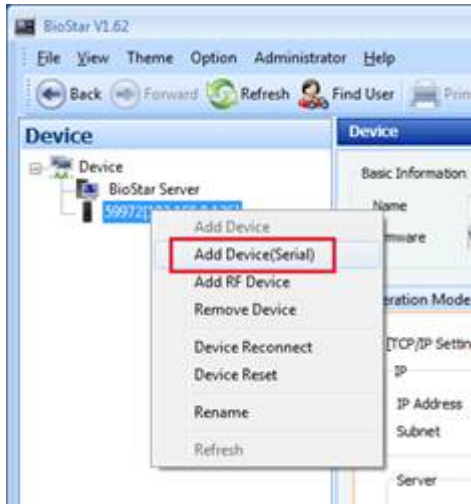
## Wiring

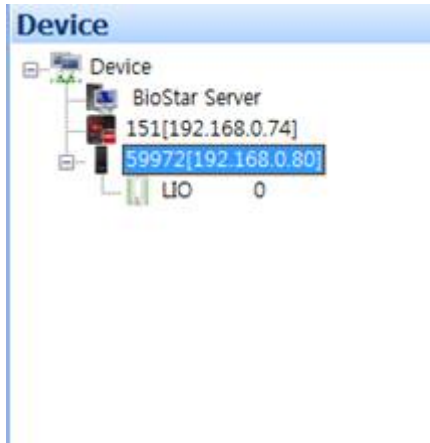
Lift I/O and devices are connected by RS485 cable. Please see the actual wiring below.



## Adding the Lift I/O in BioStar

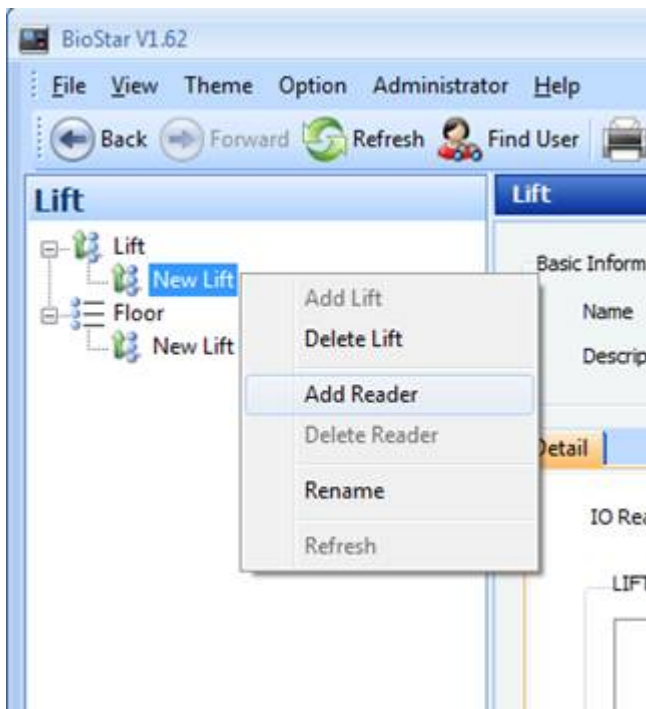
1. On the **Device** tab, right-click the Suprema device you want and click **Add Device (Serial)**.



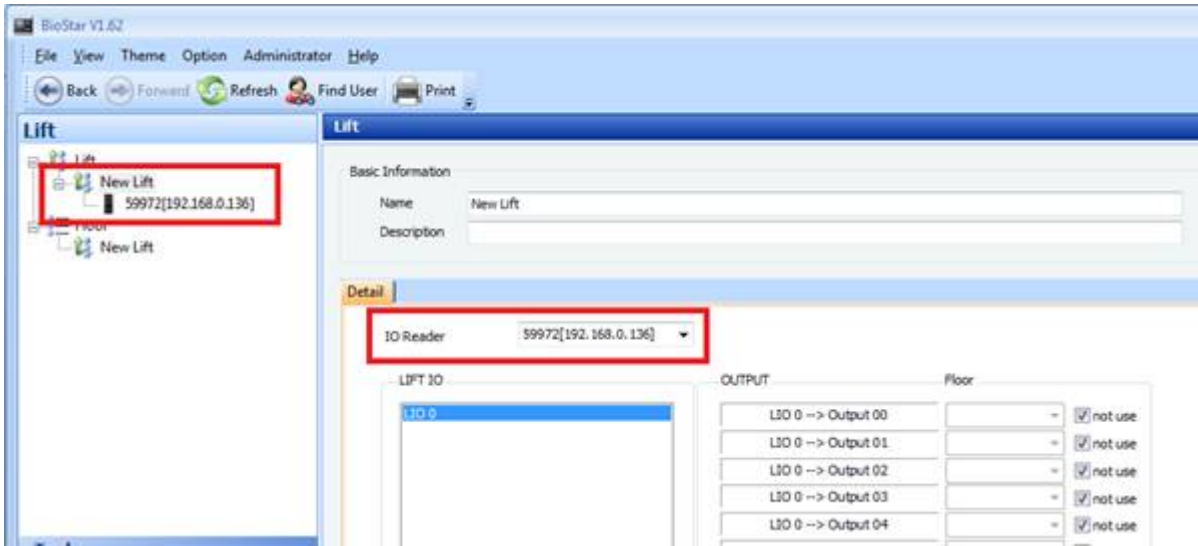


## Setting the Lift I/O in BioStar

1. On the **Lift** tab, select **Add New Lift** from the task pane. Right-click the New Lift and click **Add Reader** to add Suprema device.



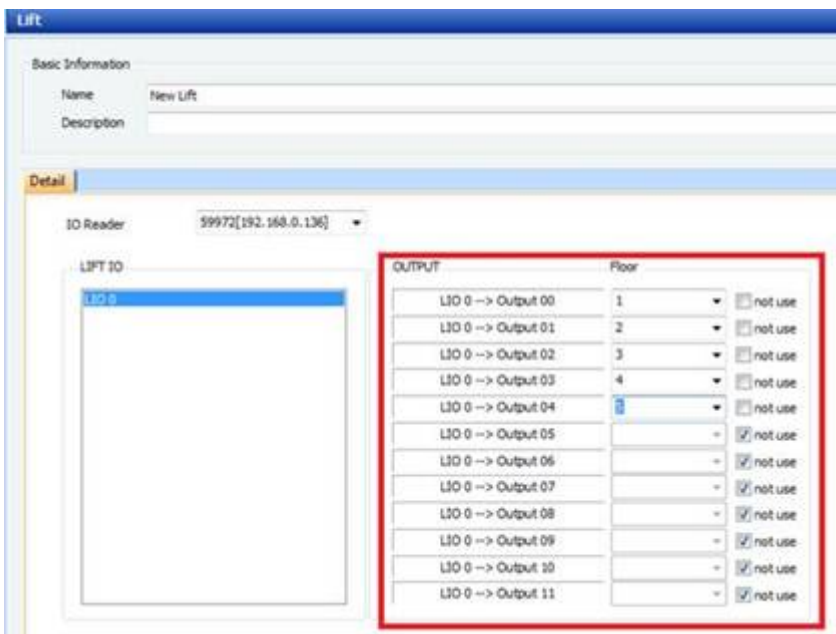
2. Now you have successfully added Suprema device as a reader.



3. Assign floors to selected Lift I/O outputs. One Lift I/O has total 12 outputs, that is, one Lift I/O is capable of handling 12 floors. Simply uncheck the **Not use** box and assign floors to each output.

In this example, we will use [Output 00] to [Output 04].

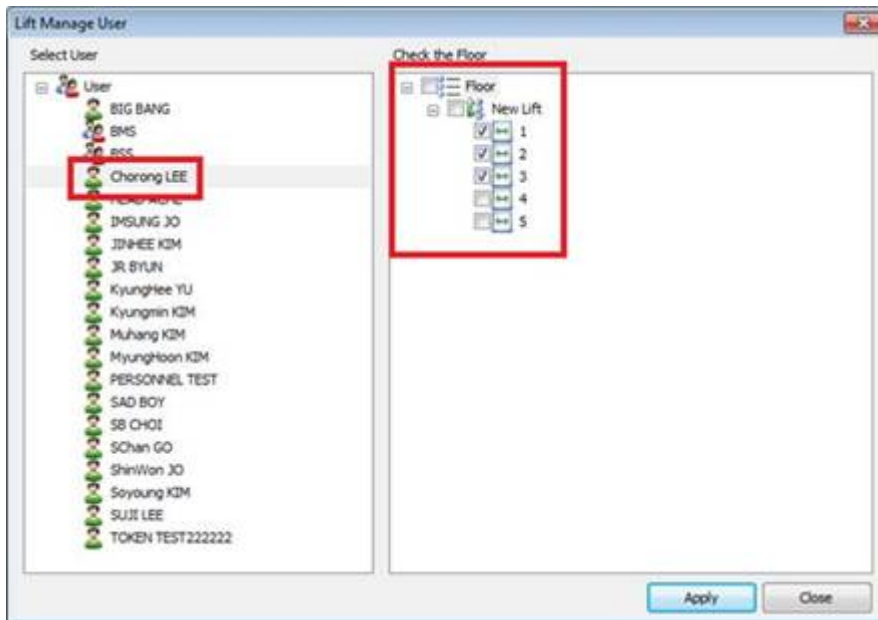
- [Output 00] → First Floor
- [Output 01] → Second Floor
- [Output 02] → Third Floor
- [Output 03] → Forth Floor
- [Output 04] → Fifth Floor



5. Click **Manage Users** in Task pane.

6. Select a user and assign floors.

In this example below, the user “Chorong Lee” is allowed only floor 1 to 3. This user is not allowed to gain access on floor 4 and 5. After assigning the floor, click **Transfer to Device** to transfer the users.



7. When placing card/fingerprint of the user “Chorong Lee”, only three lights are turned on.

From:  
<http://kb.supremainc.com/knowledge/> -

Permanent link:  
[http://kb.supremainc.com/knowledge/doku.php?id=en:1xfaq\\_how\\_to\\_use\\_lift\\_i\\_o](http://kb.supremainc.com/knowledge/doku.php?id=en:1xfaq_how_to_use_lift_i_o)

Last update: **2019/12/30 16:59**