

Table of Contents

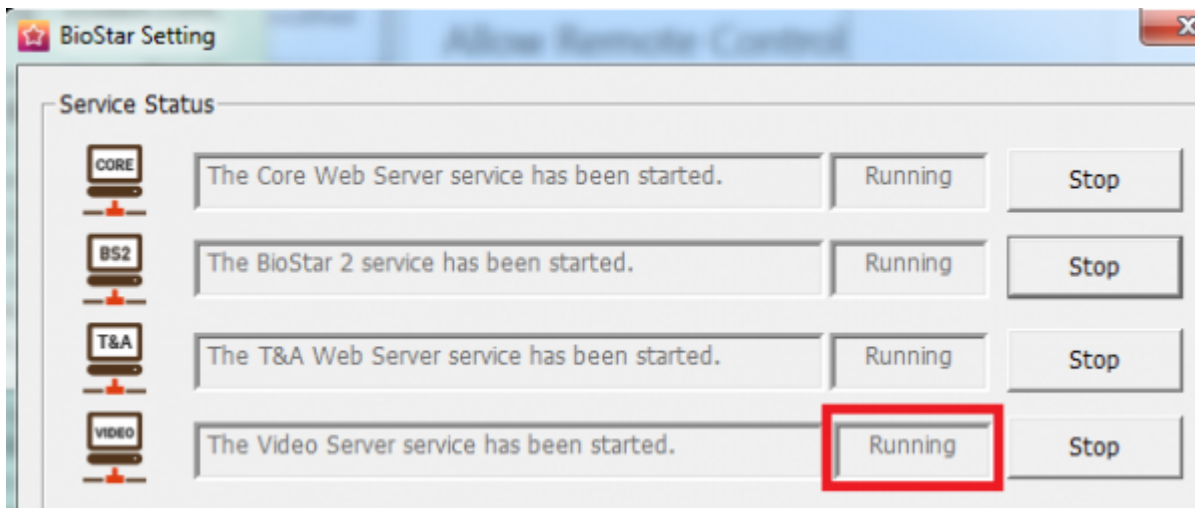
How to Configure Video menu 1

How to Configure Video menu

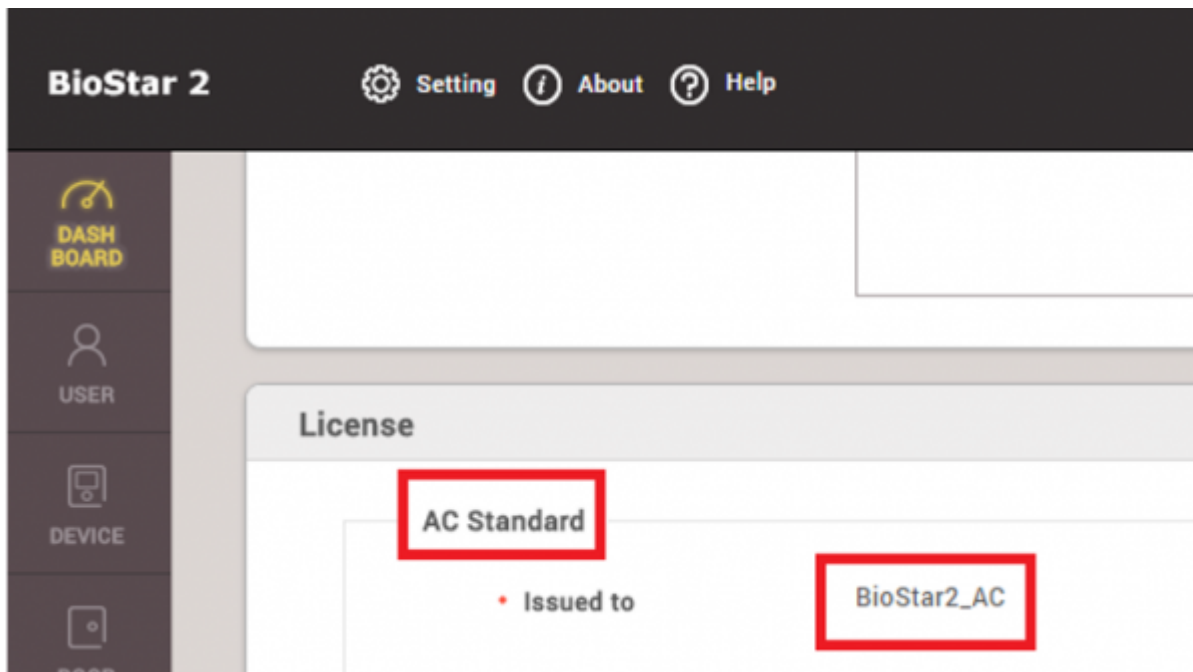
Video integration of BioStar2 – It’s simple integration to see recorded video and picture from NVR for certain log event. For video/picture confirmation, Realtime monitoring is not supported by BioStar2.

Note: To use BioStar2 video feature, you should install BioStar2 **v2.5** server on **x64** machine and configure with **Maria DB** server. If BioStar2 server is installed with MS-SQL, Video feature of BioStar2 v2.5 is not supported.

1. Confirm if BioStar2 Server machine is installed on x64 machine.
2. Confirm if Video Server of BioStar Setting is running.

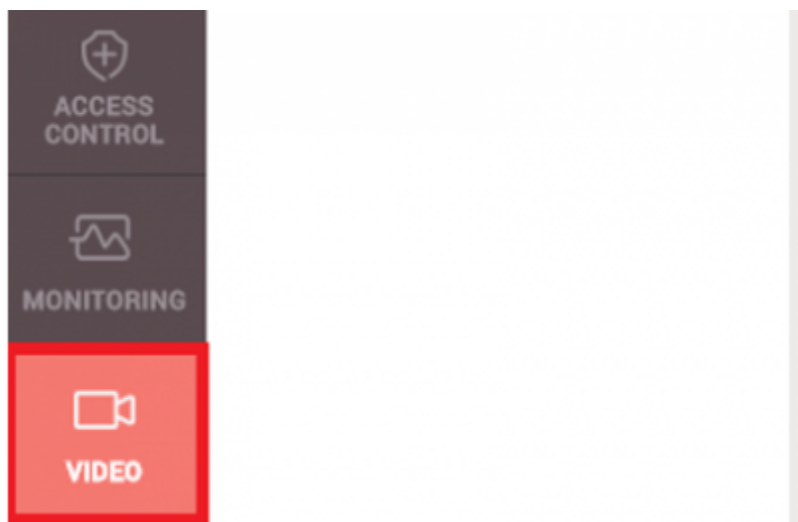


3. Confirm if a license of BioStar2 AC standard is activated.



4. Confirm if you add a device and configure a door. Video configuration will operate in accordance with a log event of a configured door of a device.

5. Click on **[Video]** menu.



Supported NVR : ACTi, Dahua, Hikvision

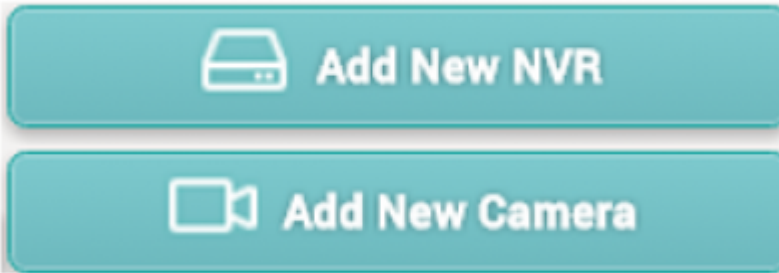
Please confirm the following information and check your NVR connection with BioStar2 2.5 before you proceed your project.

1. Hikvision NVR 1) SDK version: v5.2.771 2) Tested device : DS-7608NI-E2, DS-7616NI-E2, iVMS4200 v2.4(PC-NVR)

2. Dahua NVR 1) SDK version: v2.14.50523 2) Tested device : DH-NVR608-32-4K, DH-NVR4416, SmartPSS V1.13.1.R.20160504(PC-NVR)

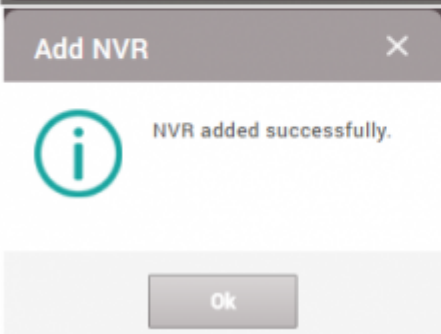
3. Acti NVR 1) SDK version: v3.0.12.42 2) Tested device : NVR3 V.3.0.13.27_20161128 Enterprise(PC-NVR)

6. Click **[Add New NVR]** > Enter information of NVR



Add New NVR [Close]

Name	<input type="text" value="NVR - 14F"/>
Manufacturer	<input type="text" value="Dahua"/>
IP	<input type="text" value="192.168.12.132"/>
Port	<input type="text"/>
ID	<input type="text"/>
Password	<input type="password"/>



7. To add a camera of NVR, click **[Add New Camera]** or right click on the NVR list.

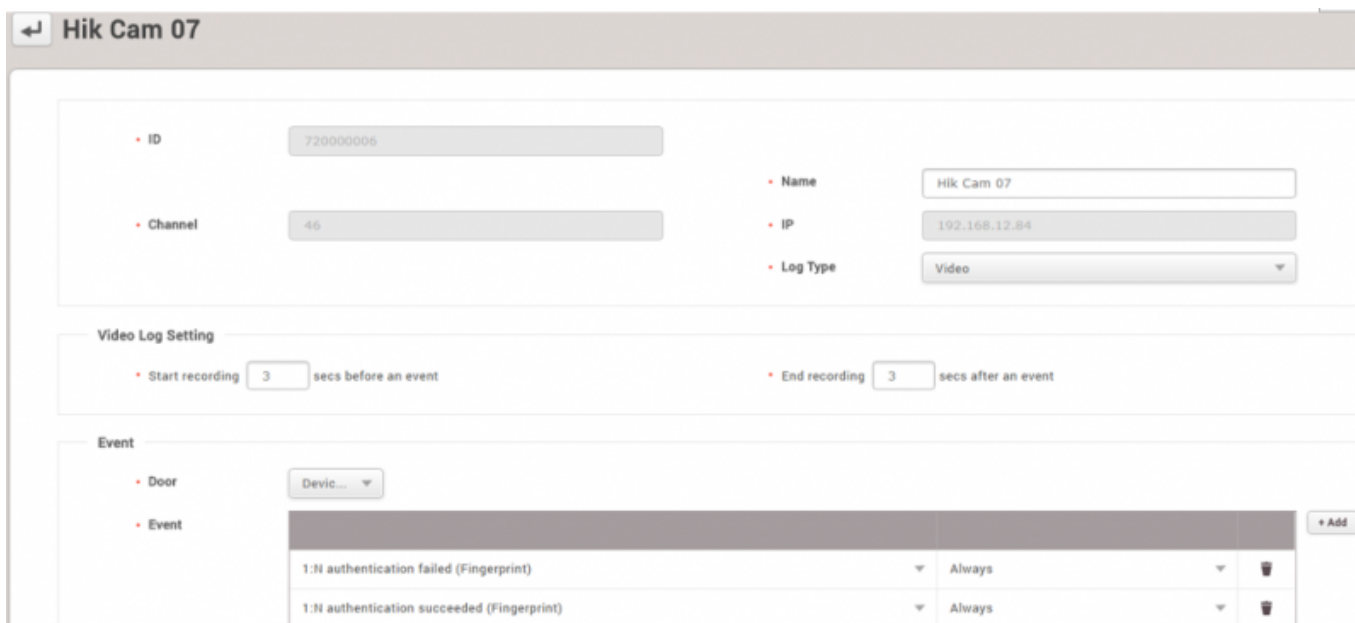


8. Click one of the added camera and confirm the camera and configure certain log event to take a video or picture

Log type: Choose one of log types. It supports Video type and Image type

Door: Choose one of doors to take a video/image from NVR

Event: Choose certain logs from all log list. Biostar2 will keep the recorded video/image for the certain logs



9. Make the certain log event to check the settings with NVR

Biostar2 will indicate the video/image after 3 mins.

10. Go to **Monitoring** menu and click **Event log**

11. Confirm the log event and see **[view]** list. To confirm the recorded data from NVR, click [▶] or an image icon to the view list.

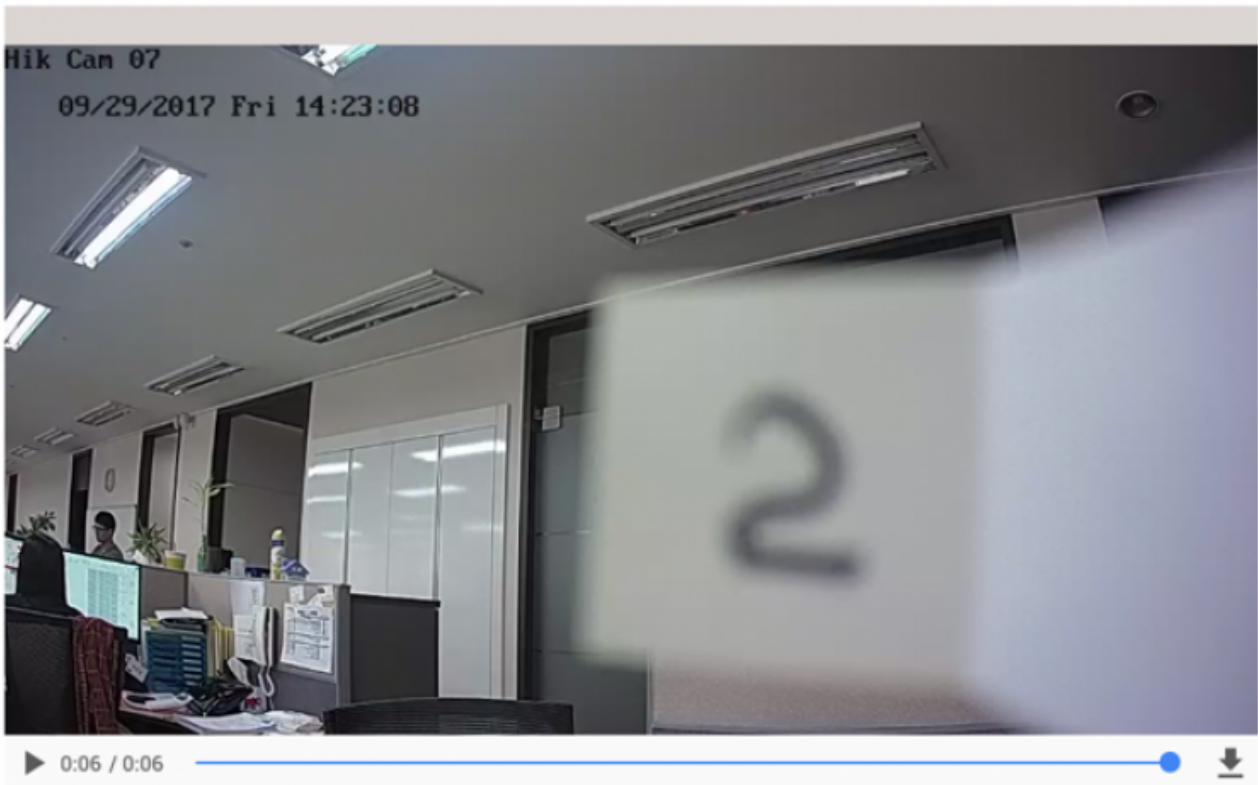
The screenshot shows the 'Event Log' interface. On the left, there is a sidebar with navigation options: Event Log, Real-time Log, Device Status, Door Status, Floor Status, Zone Status, and Alert History. Below these is an alert notification: '1:N authentication failed (Fingerprint)'. A video player is embedded in the sidebar, showing a camera view of a door with the number '2'. Below the video player, event details are listed: Date (2017/09/29 14:23:06), Device (BioStation 2 546832593), NVR (HikVision), Channel (46), and ID (69). A 'Large Screen' button is at the bottom of the sidebar.

The main area displays the 'Event Log' table with columns: Date, Device ID, Device, User Group, User, Event, and View. The table contains multiple rows of events, including door lock/unlock and authentication events. Two rows are highlighted with red boxes: one with a play button icon and another with a camera icon.

Date	Device ID	Device	User Group	User	Event	View
2017/09/29 14:23:12	546832513	BioStation 2 546832513 (...)			Door unlocked	
2017/09/29 14:23:12	546832513	BioStation 2 546832513 (...)	All Users	2449(Kate Yu)	1:N authentication succeeded (Fin...	▶
2017/09/29 14:23:09	546832593	BioStation 2 546832593 (...)			Door unlocked	
2017/09/29 14:23:09	546832593	BioStation 2 546832593 (...)	All Users	2449(Kate Yu)	1:N authentication succeeded (Fin...	
2017/09/29 14:23:08	546832513	BioStation 2 546832513 (...)			Door locked	
2017/09/29 14:23:08	546832513	BioStation 2 546832513 (...)			1:N authentication failed (Fingerpri...	
2017/09/29 14:23:06	546832593	BioStation 2 546832593 (...)			1:N authentication failed (Fingerpri...	▶
2017/09/29 14:23:05	546832513	BioStation 2 546832513 (...)			Door unlocked	
2017/09/29 14:23:05	546832513	BioStation 2 546832513 (...)	All Users	2449(Kate Yu)	1:N authentication succeeded (Fin...	▶
2017/09/29 14:23:02	546832593	BioStation 2 546832593 (...)			1:N authentication failed (Fingerpri...	📷
2017/09/29 14:16:30	700000004	Dahua_d700000004			Add NVR successful	
2017/09/29 14:16:29	700000004	Dahua_d700000004			Add NVR	
2017/09/29 14:14:46	546832513	BioStation 2 546832513 (...)			1:N authentication failed (Fingerpri...	
2017/09/29 14:14:45	546832513	BioStation 2 546832513 (...)			Door locked	
2017/09/29 14:14:42	546832593	BioStation 2 546832593 (...)			1:N authentication failed (Fingerpri...	▶
2017/09/29 14:14:42	546832593	BioStation 2 546832593 (...)			Door locked	

12. If you click on [Large screen] from the left side, you can confirm large size of video file/image file.

1:N authentication failed (Fingerprint) ✕



- Date 2017/09/29 14:23:06
- Device BioStation 2 546832593 (192.168.14.203)
- NVR HikVision
- Channel 46

From:
<http://kb.supremainc.com/knowledge/> -

Permanent link:
http://kb.supremainc.com/knowledge/doku.php?id=en:how_to_configure_video_menu&rev=1508197401

Last update: **2017/10/17 08:43**