

# Table of Contents

- How to register an enrollment device ..... 1
  - Registering a device as an enrollment device ..... 1
  - Selecting the registered enrollment device when enrolling a finger ..... 2

# How to register an enrollment device

In BioStar 2, any device can be used as an enrollment device. However, in certain sites there could be tens and hundreds of device connected to the server. In this case, it will be a painful job searching through the whole list of devices to find the exact device that you need to use for the enrollment. Now, the BioStar 2 supports a feature where you can register certain devices as an enrollment device, which will show on the top of the list of the devices when selecting the device to enroll the users' fingerprint.

## Registering a device as an enrollment device

1) Go to **Setting** → **Server** → **User/Device Management**.

• Enrollment Device

Device ID	Device Name	Device Group	IP Address
Not found			

+ Add

2) Click **+Add** button on the right and select the device you want to register as an enrollment device.

Enrollment Device

1-9/9

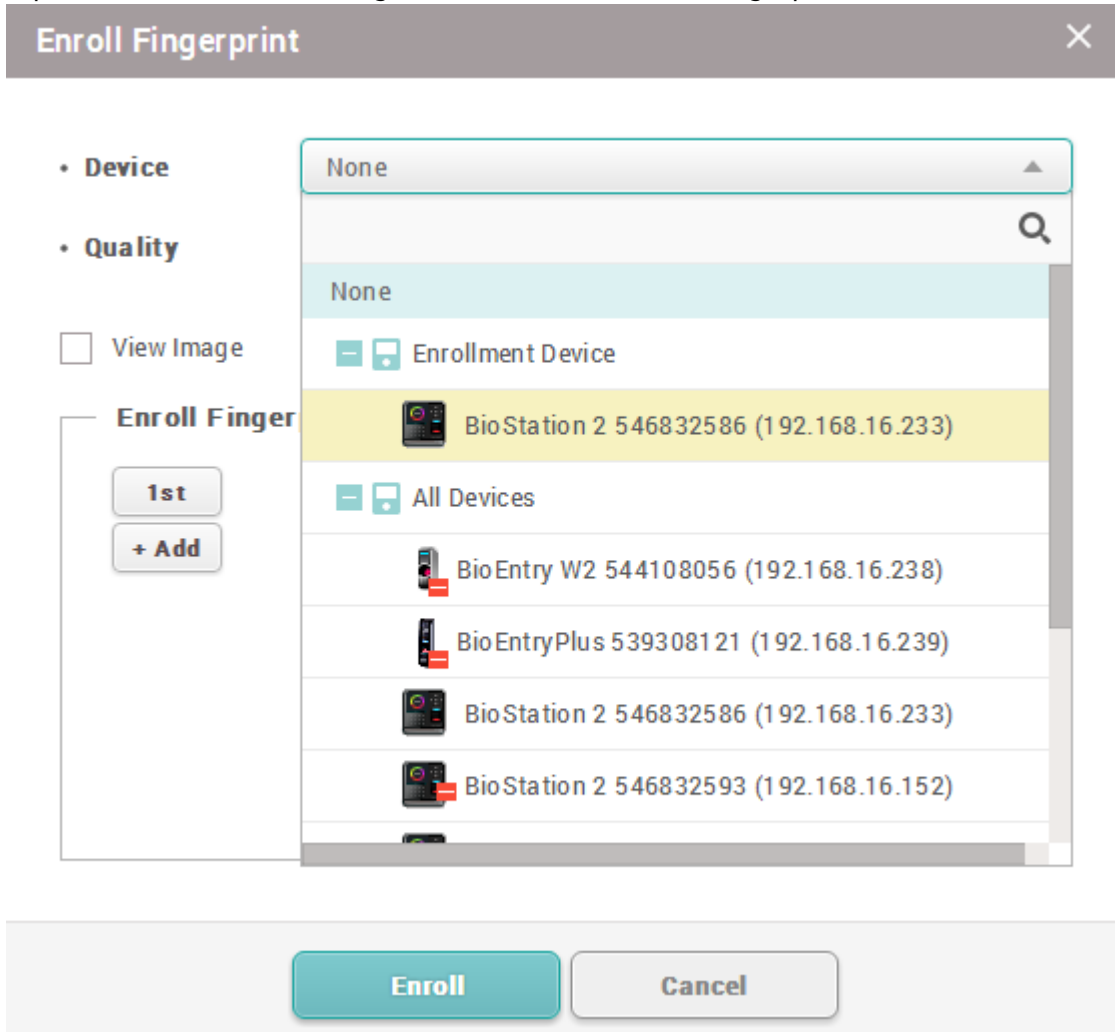
<input type="checkbox"/>	Device ID	Name	Group	IP Address
<input type="checkbox"/>	541531041	BioStation A2 541531041 (192.168.16.179)	All Devices	192.168.16.179
<input type="checkbox"/>	541531061	BioStation A2 541531061 (192.168.16.206)	All Devices	192.168.16.206
<input type="checkbox"/>	542501008	BioStation L2 542501008 (192.168.16.231)	All Devices	192.168.16.231
<input type="checkbox"/>	544108056	BioEntry W2 544108056 (192.168.16.238)	All Devices	192.168.16.238
<input checked="" type="checkbox"/>	546832586	BioStation 2 546832586 (192.168.16.233)	All Devices	192.168.16.233
<input type="checkbox"/>	546832593	BioStation 2 546832593 (192.168.16.152)	All Devices	192.168.16.152
<input type="checkbox"/>	546834329	BioStation 2 546834329 (192.168.16.191)	All Devices	192.168.16.191

Add Close

3) Click the **Apply** button.

## Selecting the registered enrollment device when enrolling a finger

1) When entering the menu for fingerprint enroll, you will see the registered device showing on the top of the list when selecting the device to enroll the fingerprint.



From: <http://kb.supremainc.com/knowledge/> -

Permanent link: [http://kb.supremainc.com/knowledge/doku.php?id=en:how\\_to\\_register\\_an\\_enrollment\\_device&rev=1466743853](http://kb.supremainc.com/knowledge/doku.php?id=en:how_to_register_an_enrollment_device&rev=1466743853)

Last update: 2016/06/24 13:50