

# Table of Contents

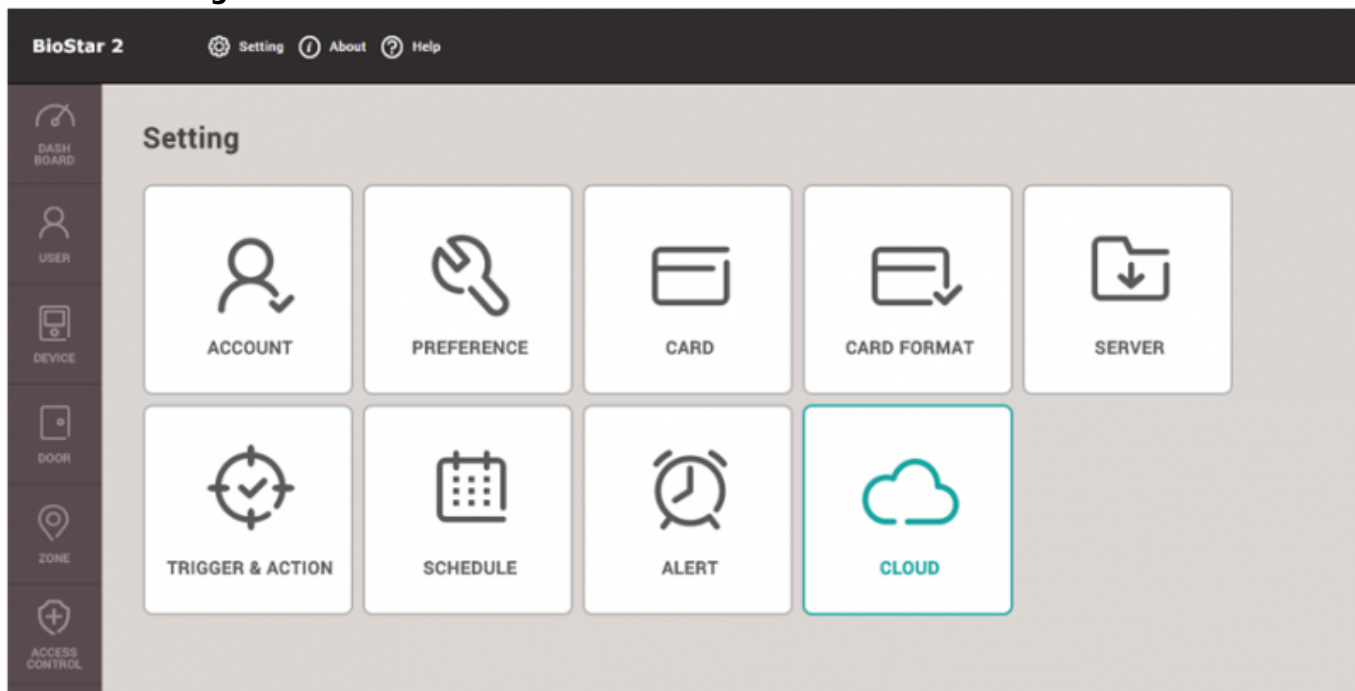
How to configure Cloud and Mobile App .....	1
Video Demo .....	8

[System Configuration](#), [BioStar 2](#), [Mobile](#), [API](#), [Cloud](#)

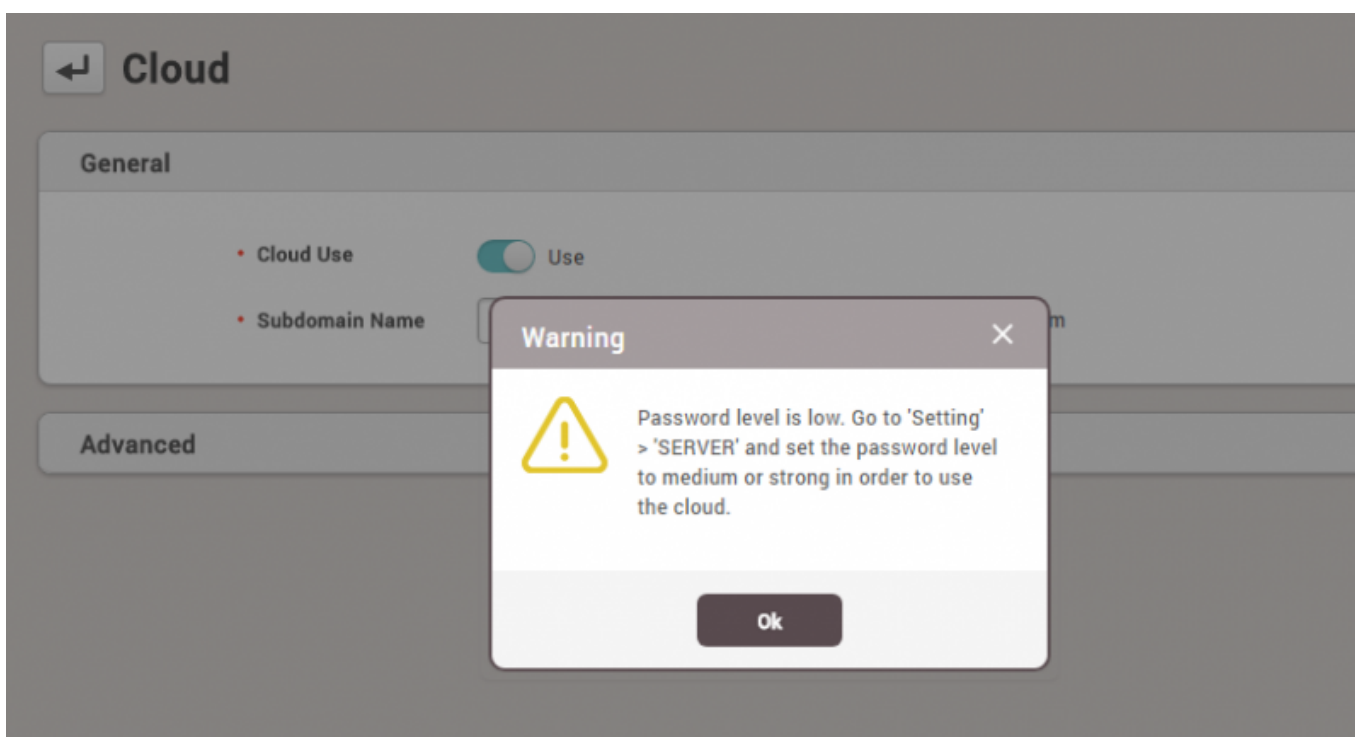
# How to configure Cloud and Mobile App

Before you start, check the fundamental course about BioStar 2 Mobile and Cloud. As it explains, the BioStar 2 server has to be connected to the Internet, and BioStar 2 2.1v or above should be installed for its use.

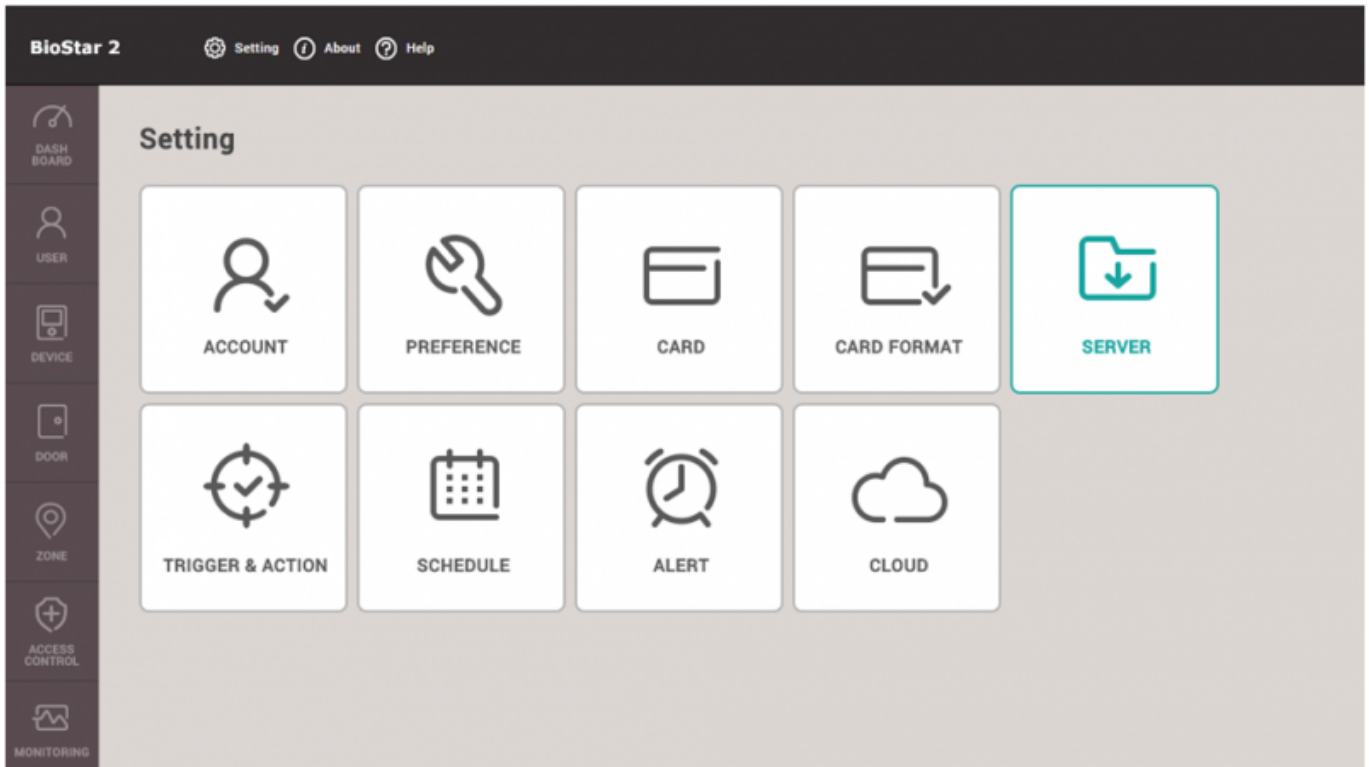
1. Go to **Setting** and **Cloud**.



2. Set **Cloud Use** to **Use**, the warning pop up message will show to guide to change the password level.

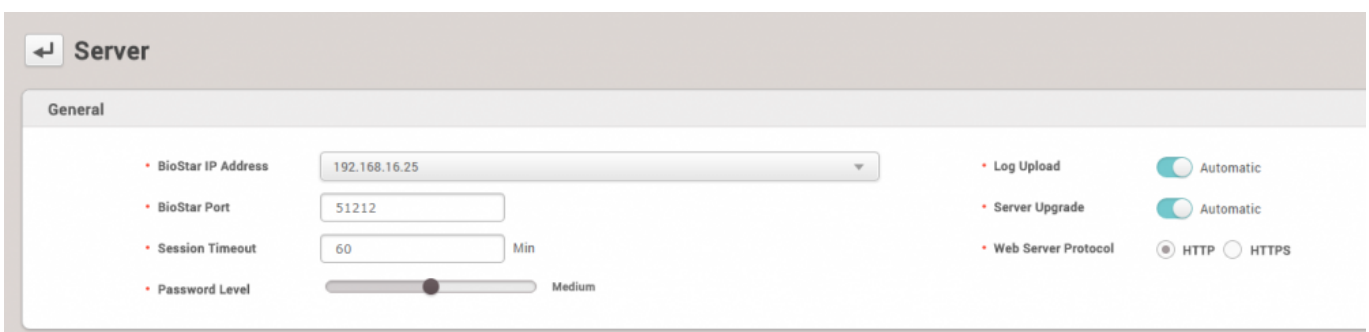


### 3. Back to the **Setting** menu and go to **SERVER**.



### 4. Change the password level to be **Medium** or **Strong**.

- **Medium:** Minimum of 8 characters with one or more alphabet, number required.
- **Strong:** Minimum of 8 characters with one or more alphabet(Upper,Lower), number, and special character required.



5. Go back to the **CLOUD** setting, and change **Cloud Use** to **USE** and enter the subdomain name. The subdomain name is an unique key ID that distinguishes your BioStar 2 server from others. Then, enter your email address and click **Apply** button. You will receive a verification email to the email address. And the cloud will be able to be used after your email verification. Please do not change **Cloud Server Address** and change **Port Used By Cloud** only when the default port number is already in use. In addition, **Version** depends on BioStar version. In case of BioStar v2.3 or below version, set **Version** to **v1**. On the other hand, in case of BioStar v2.4 or above version, set **Version** to **v2**.

Cloud configuration interface showing General and Advanced settings. General settings include Cloud Use (checked), Subdomain Name (hailey123, biostar2.com), and Administrator e-mail (jypark@suprema.co.kr). Advanced settings include Cloud Server Address (api.biostar2.com), Port Used By Cloud (52000), and Version (v2). Buttons for Apply and Cancel are visible.

6. If you click the link to activate your BioStar 2 Server via BioStar 2 Cloud via your email, you will move to the page in order to register to BioStar 2 Cloud. Please enter your Login ID and Password and click **Register** button.

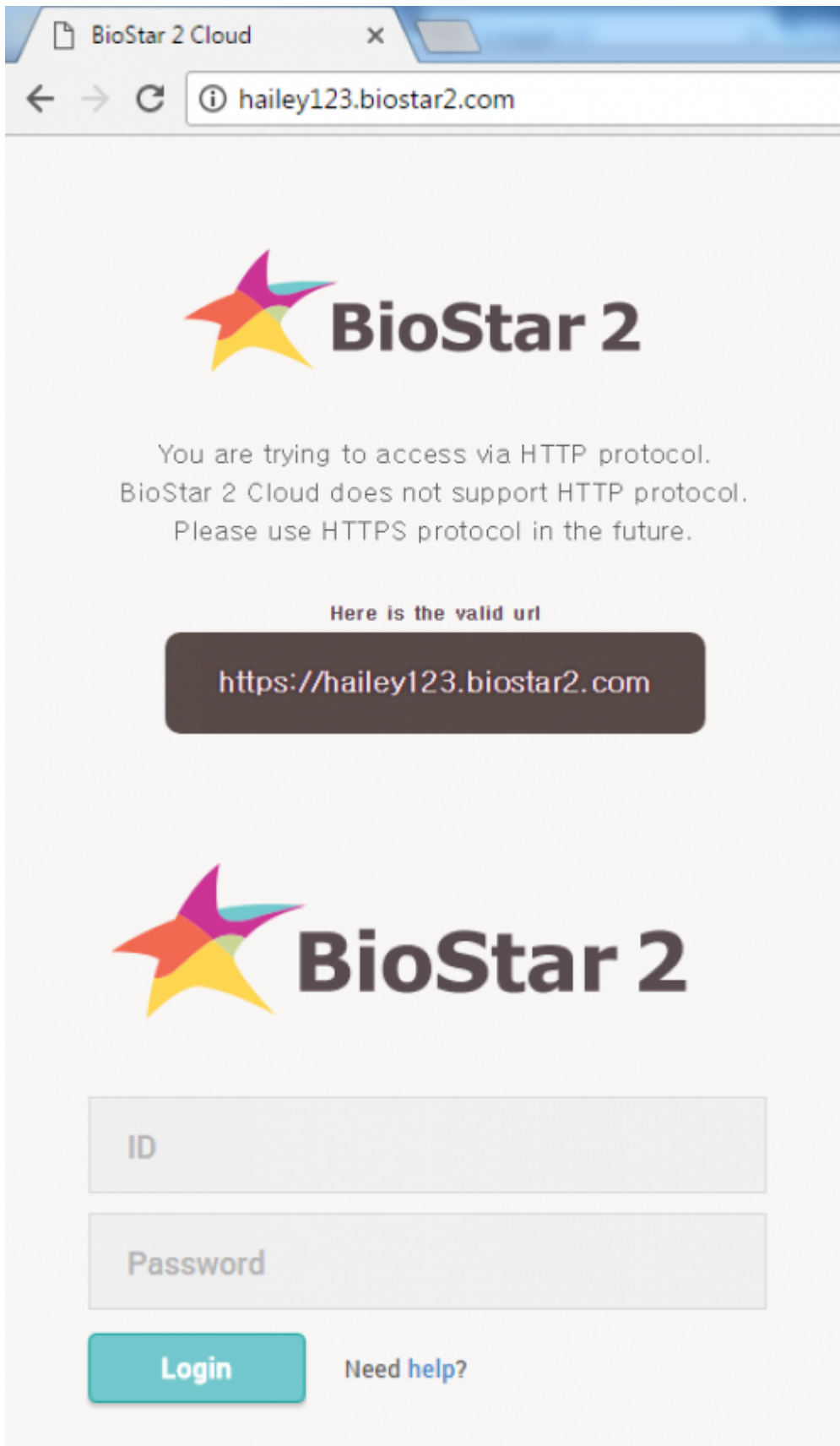
Registration page for BioStar 2 Cloud. The page displays the BioStar 2 logo and the heading "Register to BioStar 2 Cloud". There are three input fields: the first contains "hailey123", the second is labeled "Login ID", and the third is labeled "Password". A teal "Register" button is located at the bottom.

7. You will see the below page if you succeed in BioStar 2 Cloud registration.

Registration completion page for BioStar 2 Cloud. The page displays the BioStar 2 logo and the heading "BioStar 2 Cloud registration is completed. Please click the below link to check BioStar 2 Cloud API documents." Below this, it says "Here is the valid url" and shows a dark button with the text "/v2/docs".

8. You will see the below page if your server is not set to use HTTPS. Click the link and check the login

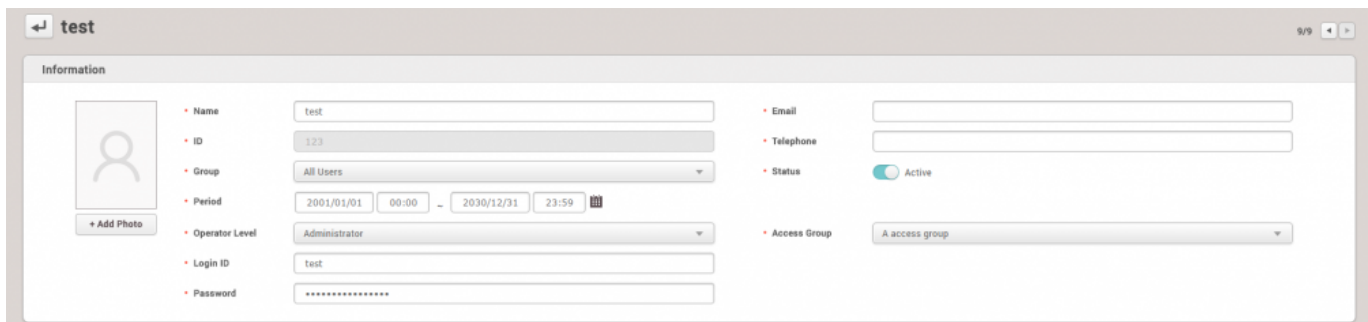
page. You will not be able to login with admin/admin because it does not meet the complexity requirement of the password level. But with this page view, you can confirm the cloud connection.



9. Close the browser and go to **USER** tap with the original browser. And add a new user or edit an existing user except the default administrator user. And enter the basic information and set BioStar Operator and enter **Login ID** and **Password** according to the password level.

## BioStar Operator Level

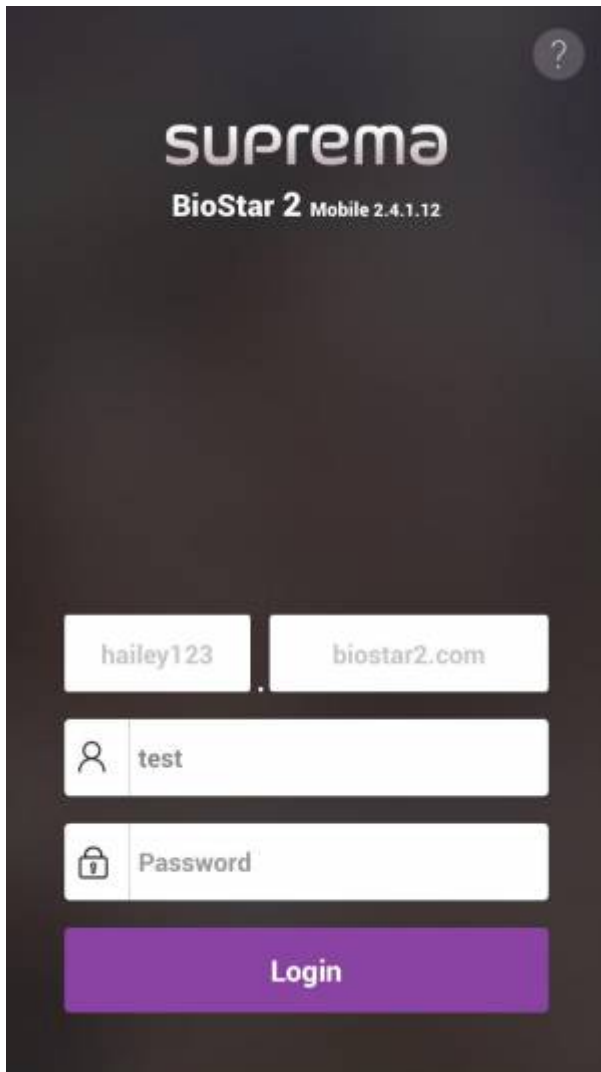
- **None:** No operator privilege
- **Administrator:** All rights (User / Preference / Device / Door / Elevator/ Zone / Access Control / Monitoring / Time & Attendance / Setting)
- **User Operator:** User / Preference
- **Monitoring Operator:** Monitoring / Preference / Dashboard (View only) / User (View only) / Device (View only) / Door (View only) / Zone (View only) / Access Control (View only)
- **T&A Operator:** Time & Attendance / User (View only)
- **User:** Own information (View only) / Time & Attendance (View only)



The screenshot shows a user information form for a user named 'test'. The form includes the following fields and options:

- Name:** test
- ID:** 123
- Group:** All Users
- Period:** 2001/01/01 00:00 - 2030/12/31 23:59
- Operator Level:** Administrator
- Login ID:** test
- Password:** [Redacted]
- Email:** [Empty field]
- Telephone:** [Empty field]
- Status:** Active (toggle switch)
- Access Group:** A access group

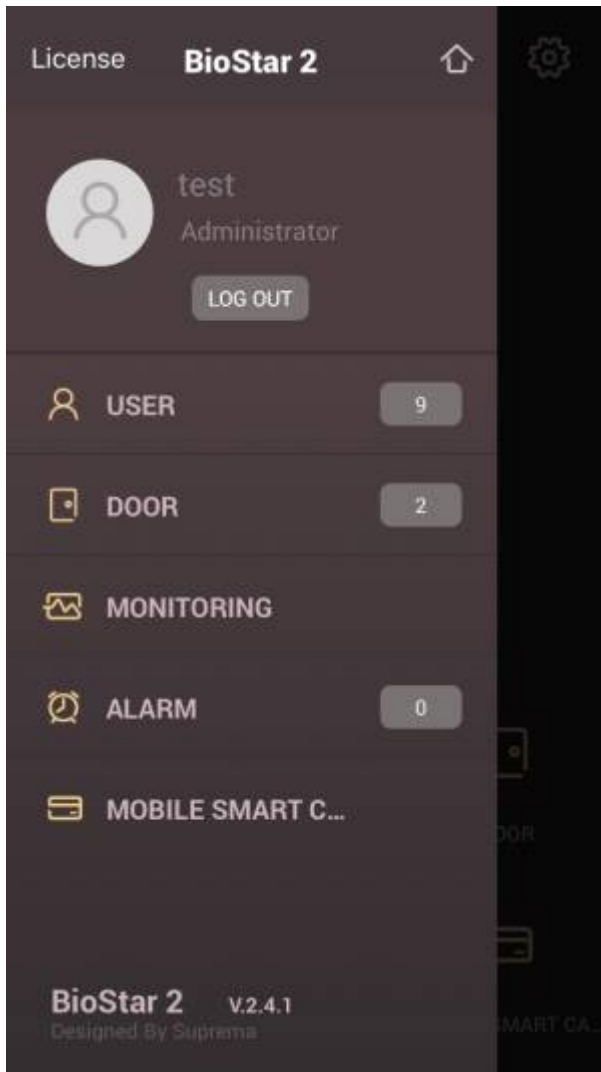
10. Launch BioStar 2 mobile app, and enter subdomain name and login ID and password.



11. Log the mobile app and tap the icon at the left top to check login details.







## Video Demo

[mobile.mp4](#)

From:

<http://kb.supremainc.com/knowledge/> -

Permanent link:

[http://kb.supremainc.com/knowledge./doku.php?id=en:how\\_to\\_use\\_mobile\\_app&rev=1496995352](http://kb.supremainc.com/knowledge./doku.php?id=en:how_to_use_mobile_app&rev=1496995352)

Last update: **2017/06/09 17:02**