

# Table of Contents

Improved door open logs ..... 1

BioStar 2, Monitoring, door, logs

# Improved door open logs

**Affected Version:** BioStar 2.9.0 or above

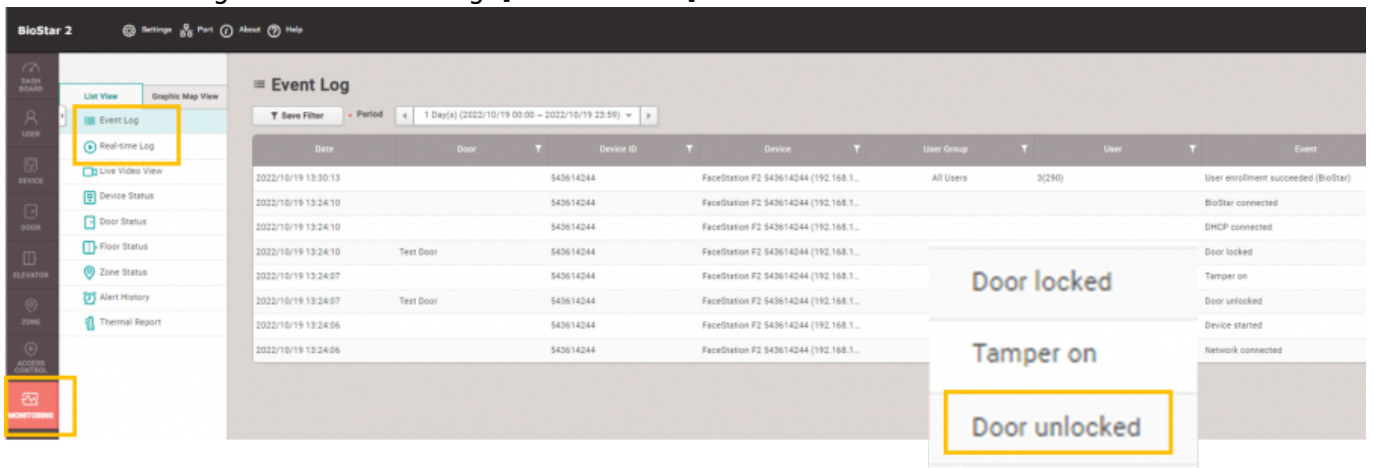
**Affected Products & Versions:**

BioStation 3 Version 1.0.0

FaceStation F2 Version 2.1.0 (to be released)

BioLite N2 Version 1.5.0

In previous versions of BioStar 2, Door open logs were limited to “Door unlocked” in Monitoring Menu in both Event log and Real-Time Log. [Shown below]



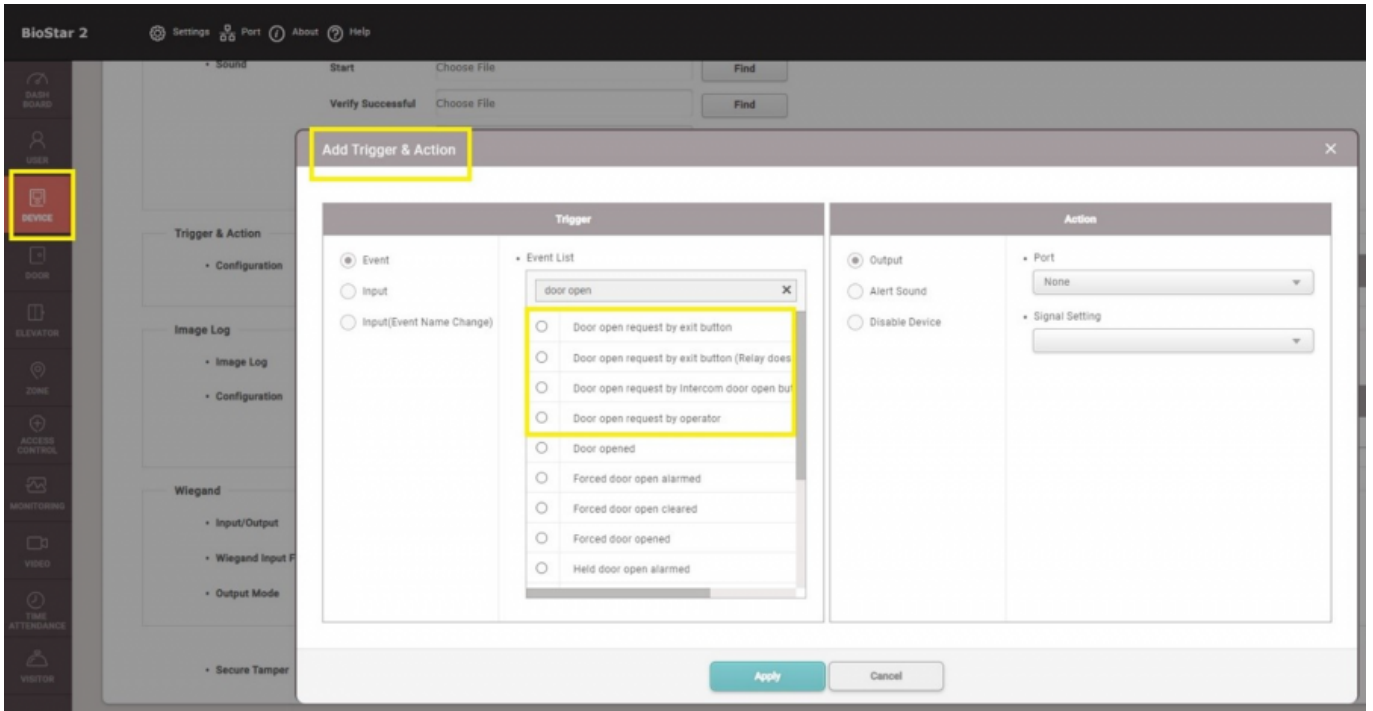
## BioStar 2 Version 2.9.0

Newly Added Door Open Logs

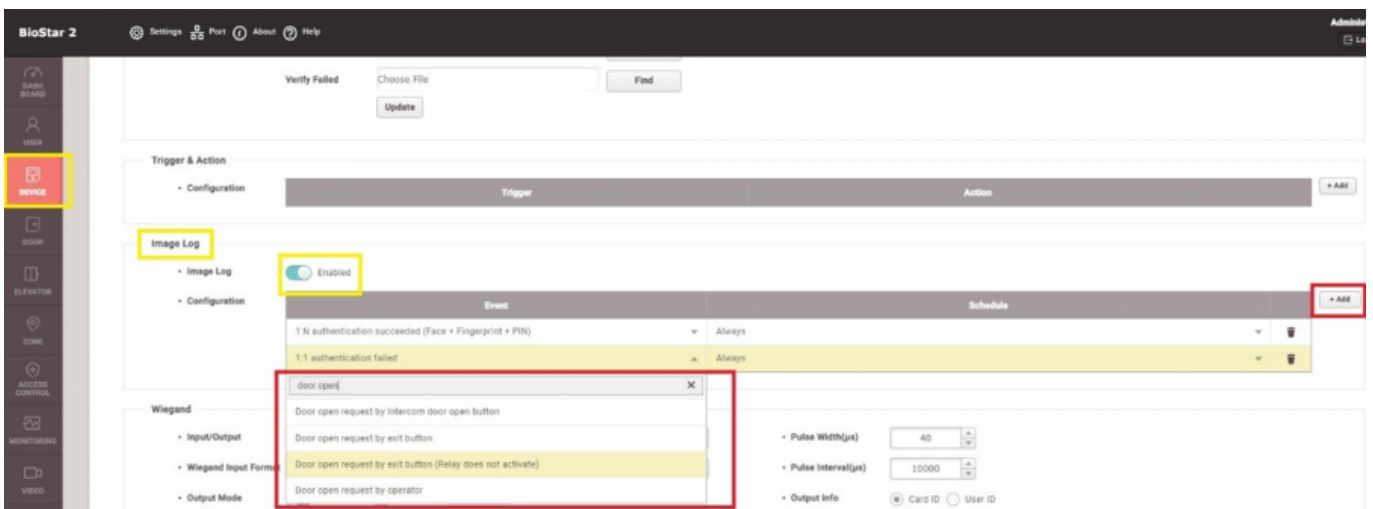
- Door open requested by exit button
- Door open requested by the operator
- Door open requested by exit button (Replay does not activate)

Now BioStar 2 Version 2.9.0 consists Door Open logs in details. Detailed door open logs can be found in Monitoring menu in both Event Log and Real-time Log. Furthermore, these detailed door unlocked functions could be added on to trigger & action, and image log.

- Device → Trigger & Action



• Device Image Log

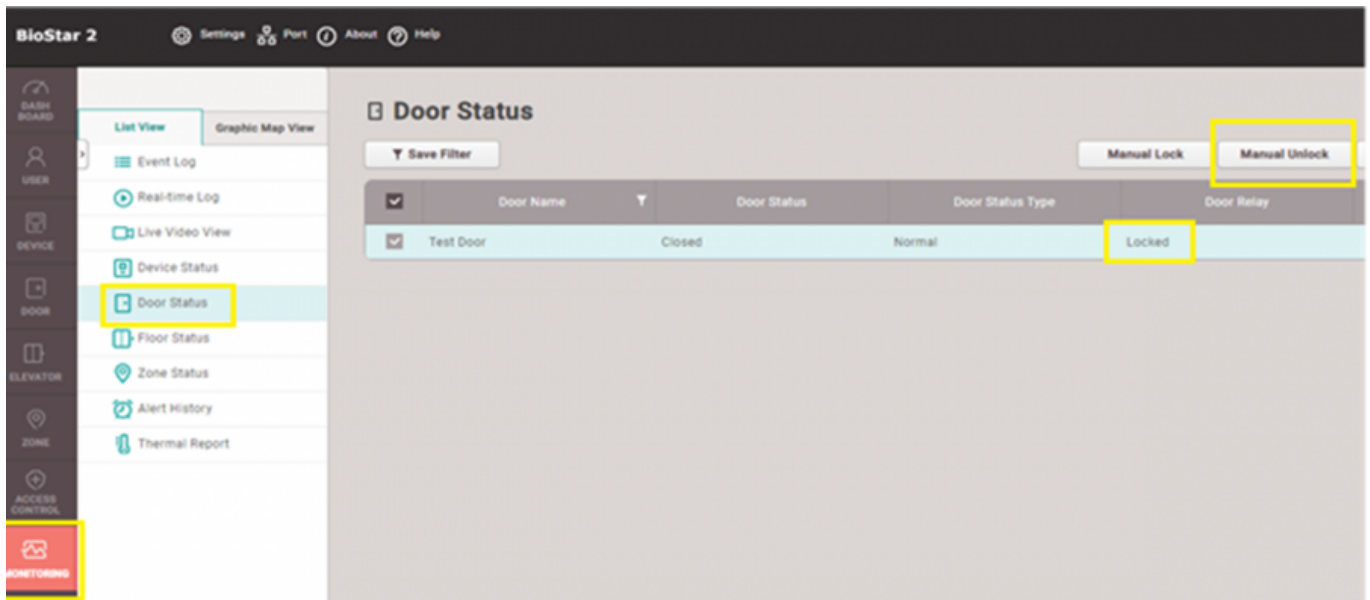


**Newly added logs can be found in Monitoring menu in both Event Log and Real-time Log**

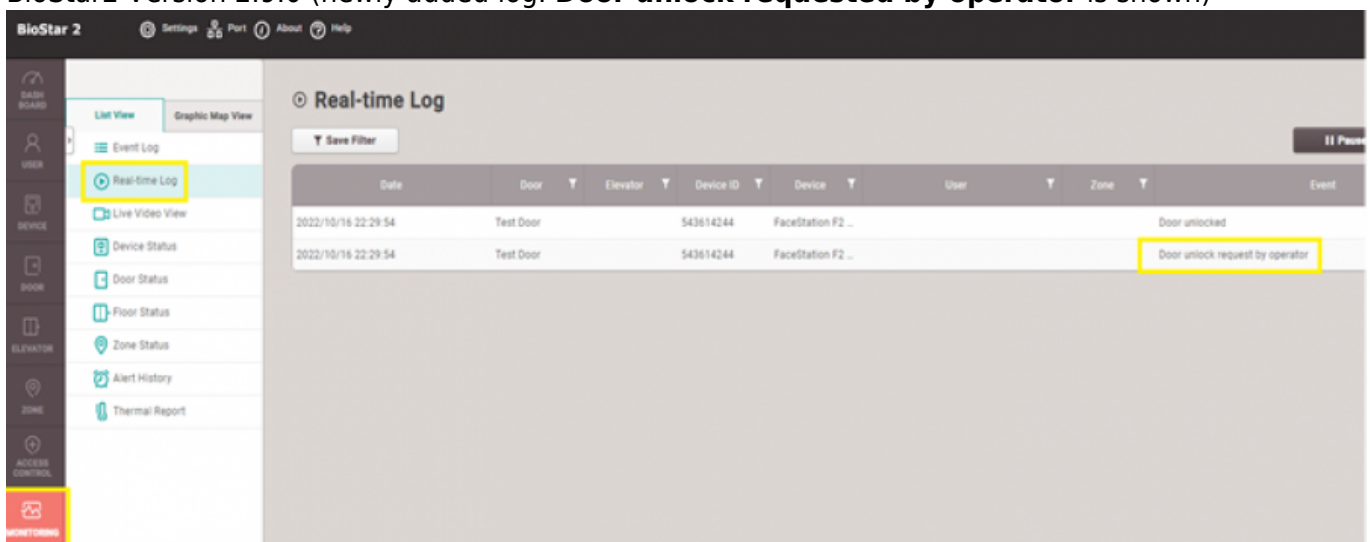
- **Door open request by exit button**
- **Door open request by the operator**

when the operator clicks open button from BioStar 2 Door status menu, the door open time will be using the same setting as the Door open time.

Example Case ) Operator uses Monitoring → Door Status Menu to unlock the door



BioStar2 Version 2.9.0 (newly added log: **Door unlock requested by operator** is shown)



- **Door open request by exit button (Relay does not activate)**  
case for exit button that does NOT trigger relay

From:  
<http://kb.supremainc.com/knowledge/> -

Permanent link:  
[http://kb.supremainc.com/knowledge/doku.php?id=en:improved\\_door\\_open\\_logs](http://kb.supremainc.com/knowledge/doku.php?id=en:improved_door_open_logs)

Last update: **2022/10/25 14:50**