

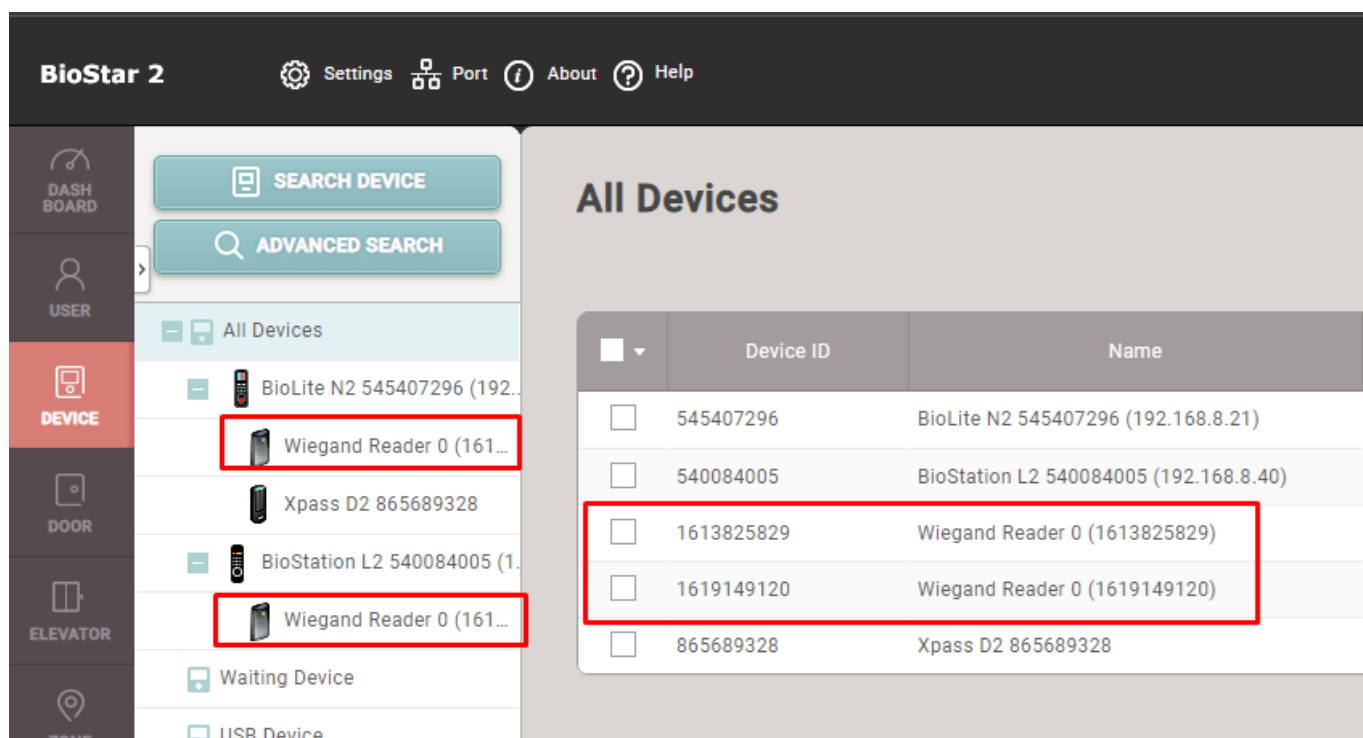
Table of Contents

Supports Wiegand Devices as a TA management Device 1

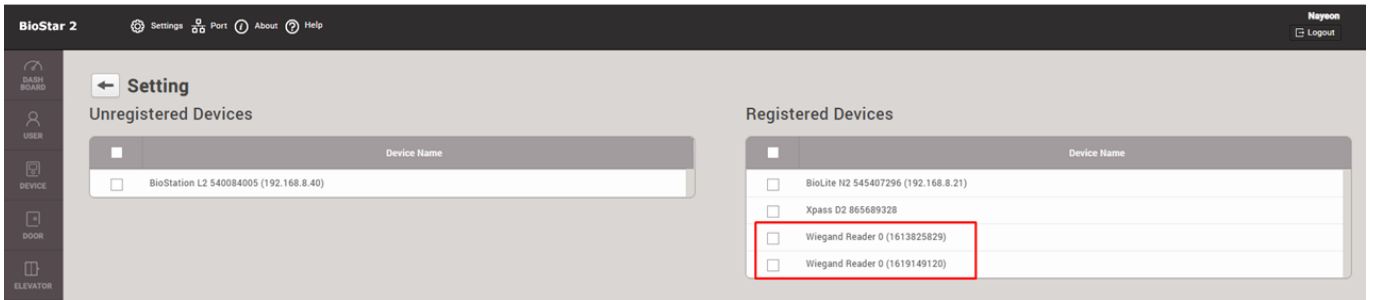
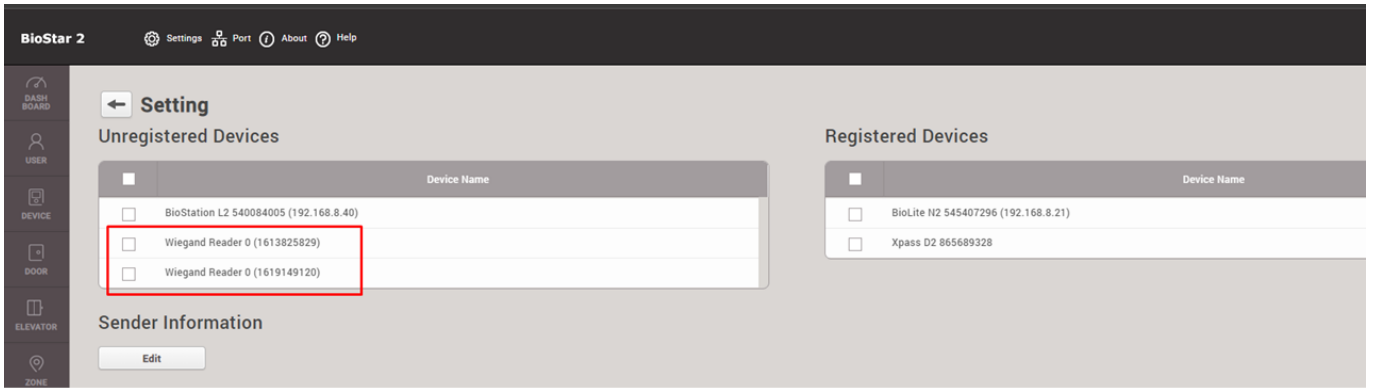
Supports Wiegand Devices as a TA management Device

Biotar 2 can add a wiegand reader under the connected BioStar 2 devices. From BioStar 2 v2.8.5, you can add Wiegand devices as a TA device in BioStar 2 TA Registered device list.

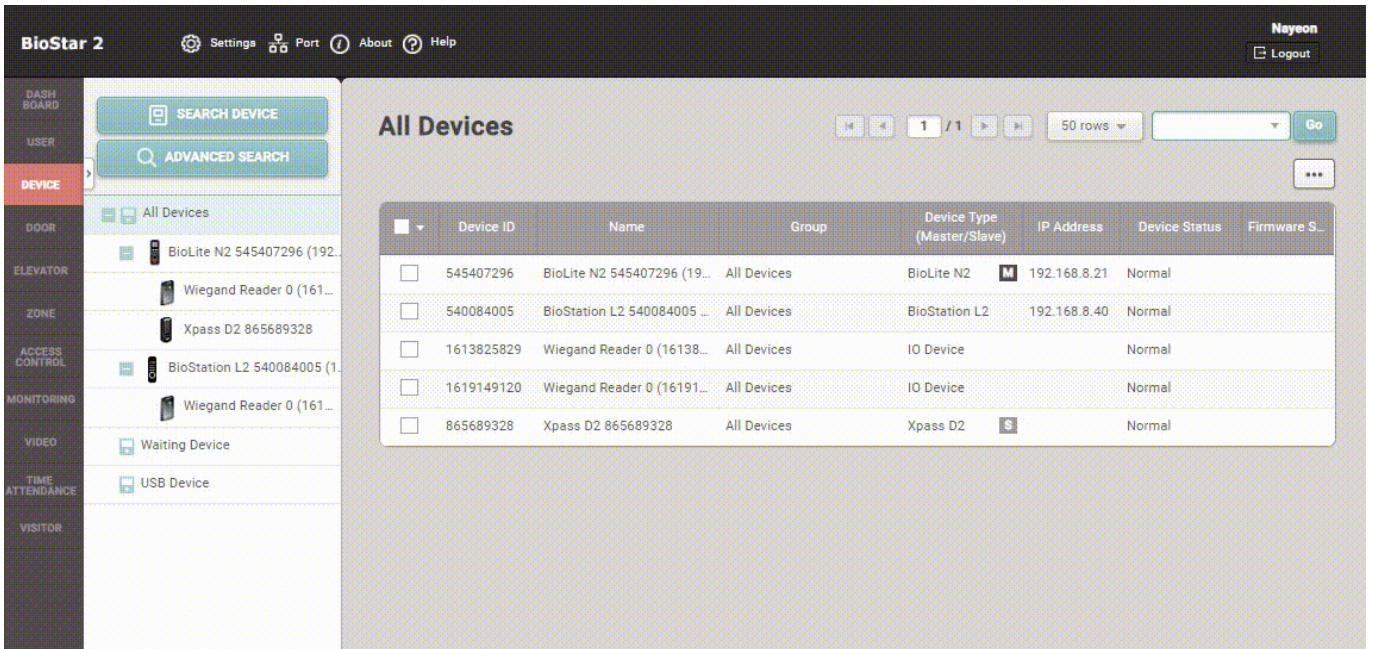
- Wiegand devices in Biostar 2 device menu



- Wiegand devices in TA system



The Wiegand device that sets as a TA device is NOT able to set the 'T&A key' and 'TA Setting'. It's only possible to synchronize event logs of Wiegand devices.



From: <http://kb.supremainc.com/knowledge/> -

Permanent link: http://kb.supremainc.com/knowledge/doku.php?id=en:supports_wiegand_devices_as_a_ta_management_device

Last update: 2020/09/08 10:59