
| | |
|---------------------------|---|
| | 1 |
| | 1 |
| | 2 |
| [(Datetime)] | 2 |
| [(User)] | 2 |
| [(Operator Level)] | 3 |
| [IP(IP)] | 3 |
| [(Category)] | 3 |
| [(Target)] | 3 |
| [(Action)] | 3 |
| [(Save Filter)] | 3 |
| [CSV (CSV Export)] | 4 |
| [(Column Setting)] | 4 |

, BioStar 2

BioStar 2.5.0

BioStar 2

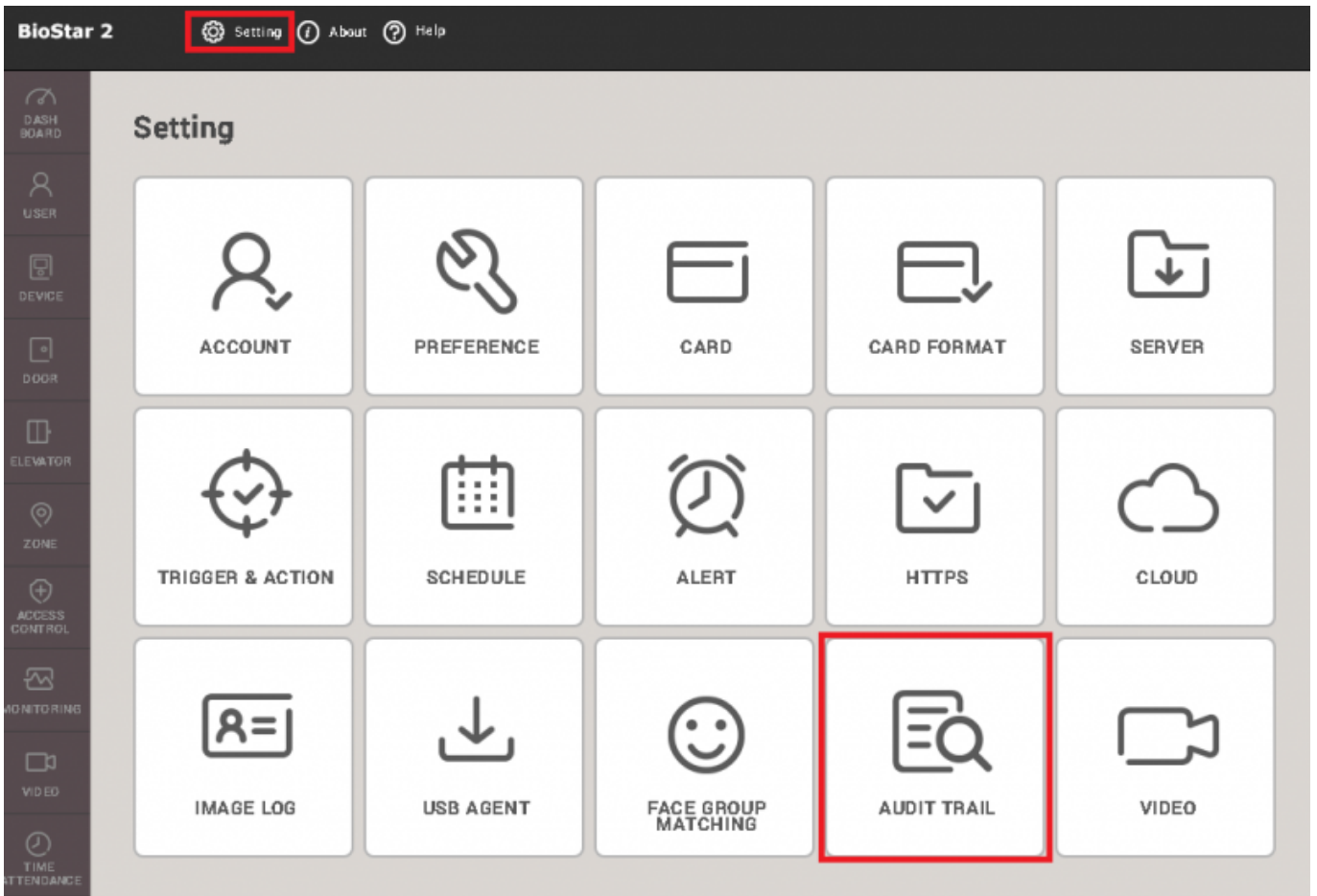
가

가

가

(Setting) >

(AUDIT TRAIL)



[(Datetime)]

1 3

The screenshot shows the 'Audit Trail' interface. On the left sidebar, the 'Last 3 Months' filter is selected and highlighted with a red box. The main area features a filter section with four dropdown menus: 'Datetime' (set to '2017/06/28 00:00 - 2017/09/28 23:59'), 'User' (set to 'None'), 'Operator Level' (set to 'None'), and 'IP' (set to 'None'). Below the filters is a table with the following data:

| Datetime | User | Operator Level | IP |
|---------------------|-------------|------------------|----------------|
| 2017/09/28 11:40:51 | Ethan(1111) | Administrator(1) | 192.168.14.16 |
| 2017/09/28 11:22:27 | hailey(123) | Administrator(1) | 192.168.14.216 |
| 2017/09/28 07:38:38 | Ethan(1111) | Administrator(1) | 192.168.11.85 |
| 2017/09/28 07:38:35 | Ethan(1111) | Administrator(1) | 192.168.11.85 |
| 2017/09/28 07:38:30 | Ethan(1111) | Administrator(1) | 192.168.11.85 |

(Datetime)

This screenshot is similar to the previous one, but the 'Datetime' dropdown menu in the filter section is highlighted with a red box. The table data remains the same as in the previous screenshot.

[(User)]

ID

(Enter)

[(Operator Level)]

(Enter)

[IP(IP)]

IP . IP (Enter)

[(Category)]

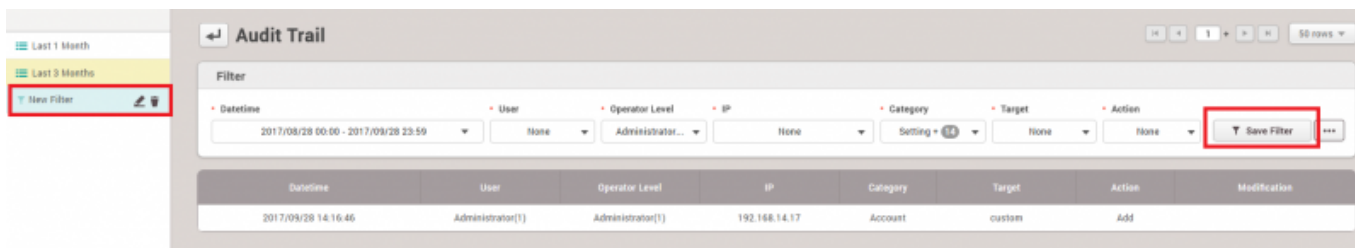
가

[(Target)]

[(Action)]

가

[(Save Filter)]

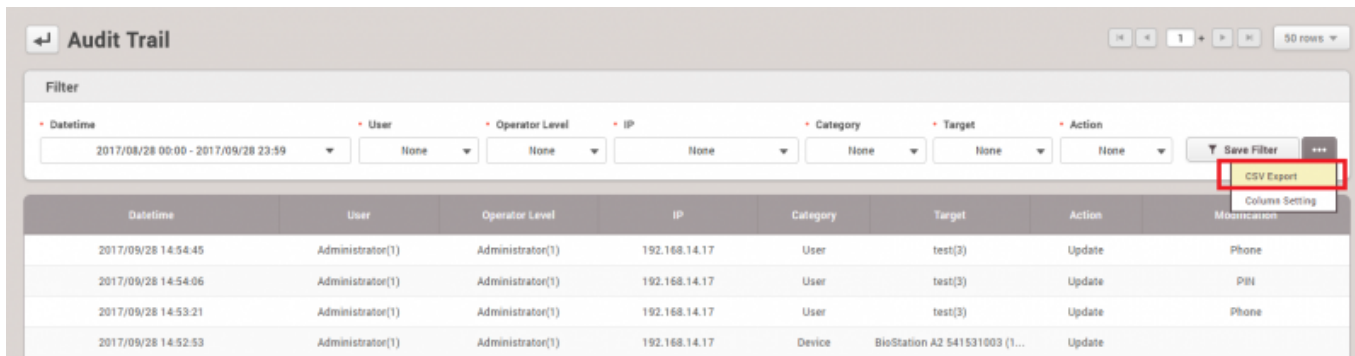


BioStar 2.5.0

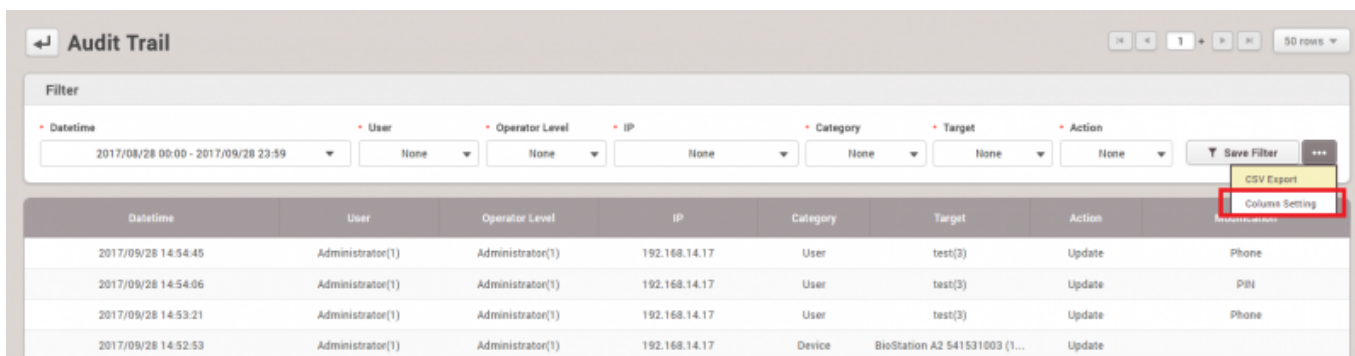
가 . BioStar 2

[CSV (CSV Export)]

*.CSV



[(Column Setting)]



From: <https://kb.supremainc.com/knowledge/> -

Permanent link: https://kb.supremainc.com/knowledge/doku.php?id=ko:how_to_use_audit_trail

Last update: **2018/07/12 17:02**