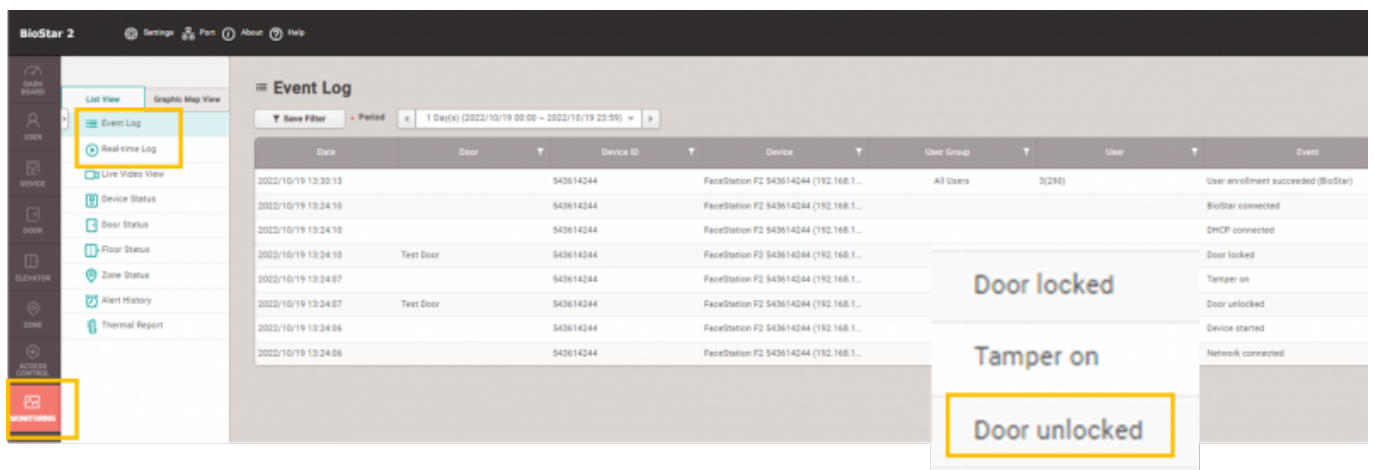


Table of Contents

Improvements upon Event Logs Regarding Door Open 1

Improvements upon Event Logs Regarding Door Open

In previous versions of BioStar 2, Door open logs were limited to “Door unlocked” in Monitoring Menu in both Event log and Real- Time Log.

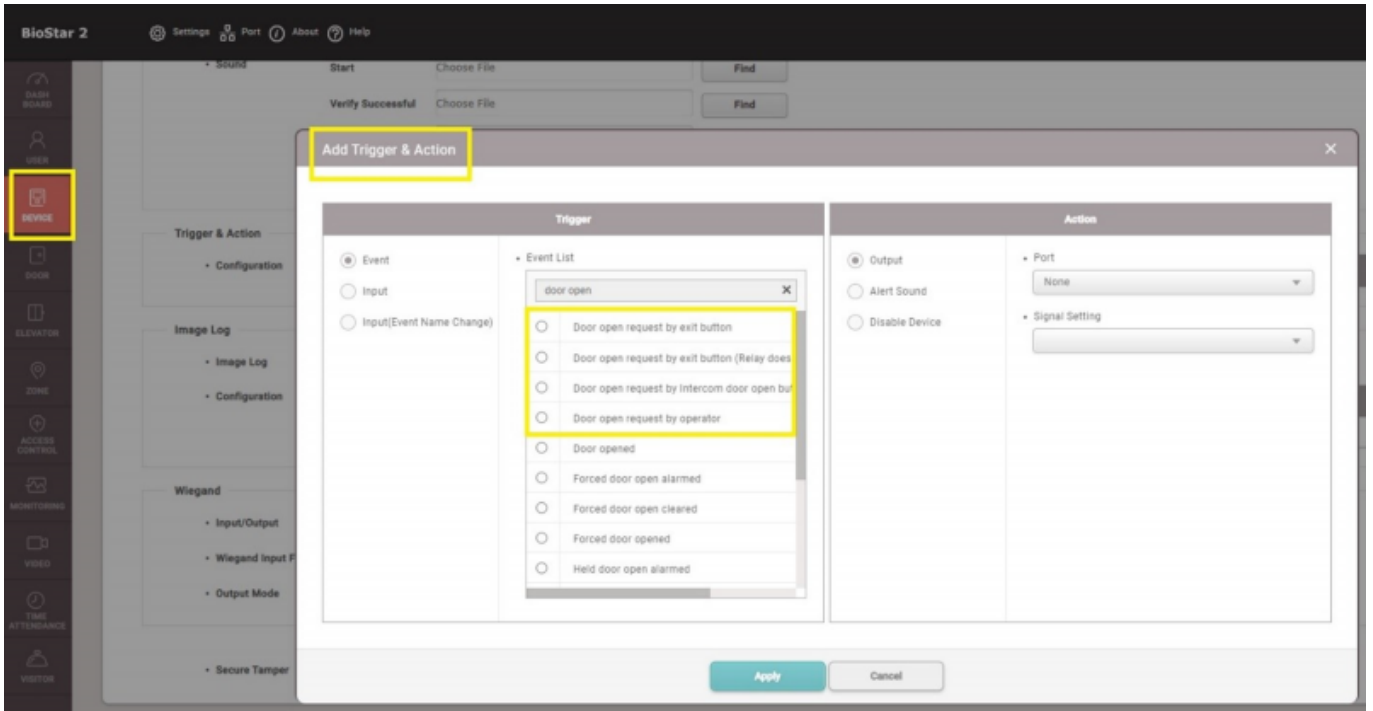


BioStar 2 Version 2.9.0 Newly Added Door Open logs

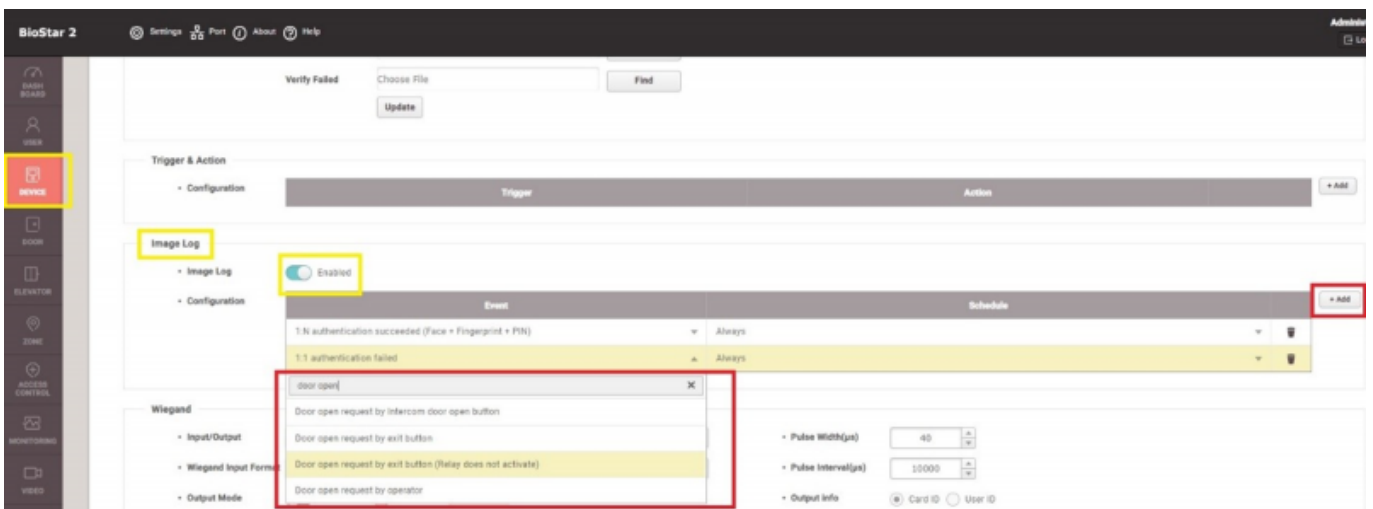
- Unordered List ItemDoor open requested by exit button
- Unordered List ItemDoor open requested by the operator
- Unordered List ItemDoor open requested by exit button (Replay does not activate)

Now BioStar 2 Version 2.9.0 consists Door Open logs in details. Detailed door open logs can be found in Monitoring menu in both Event Log and Real-time Log. Furthermore, these detailed door unlocked functions could be added on to trigger & action, and image log.

Device → Trigger & Action



Device Image Log



Newly added logs can be found in Monitoring menu in both Event Log and Real-time Log

- Unordered List Item Door open request by exit button
- Unordered List Item Door open request by the operator
 - when the operator clicks open button from BioStar 2 Door status menu, the door open time will be using the same setting as the Door open time.

Example Case) Operator uses Monitoring → Door Status Menu to unlock the door

Date	Door	Elevator	Device ID	Device	User	Zone	Event
31/07/2020 15:13:38			239	FaceStat...	2(-)		Access denied (Invalid access group)
31/07/2020 15:13:26	fs2		239	FaceStat...			Door locked
31/07/2020 15:13:23			239	FaceStat...	200706(-)		1:N authentication succeeded (Face)
31/07/2020 15:13:23	fs2		239	FaceStat...			Door unlocked

BioStar2 Version 2.9.0 (newly added log : **Door unlock requested by operator** is shown)

Date	Door	Elevator	Device ID	Device	User	Zone	Event
2022/10/16 22:29:54	Test Door		543614244	FaceStation F2 ...			Door unlocked
2022/10/16 22:29:54	Test Door		543614244	FaceStation F2 ...			Door unlock request by operator

- **Door open request by exit button (Relay does not activate)**
 - case for exit button that does NOT trigger relay

From: <https://kb.supremainc.com/knowledge/> -

Permanent link: https://kb.supremainc.com/knowledge/doku.php?id=en:door_open_event_logs

Last update: **2023/12/07 16:24**