

Table of Contents

BioStar 2 Installation 1

BioStar 2 Installation

Before you start, please check the system requirements

System Requirements

Item		Small	Medium	Enterprise
Environment	Total Users	500	5,000	10,000
	Total Devices	50	100	1,000
System requirement (Server)	OS	<ul style="list-style-type: none"> Windows 7 Home Basic 64 bit or later Windows 7 Home Basic 32 bit or later 	<ul style="list-style-type: none"> Windows Server 2008 R2 Standard 64 bit or later Windows 7 Home Premium 64 bit or later 	<ul style="list-style-type: none"> Windows Server 2008 R2 Standard 64 bit or later Windows 7 Home Premium 64 bit or later
	Database	MariaDB 10.1.10 or later, Oracle Database 11g , Oracle Database 11g Express, Oracle Database 12c		
	CPU	2 GHz Dual Core	3 GHz Quad Core	3 GHz Quad Core
	RAM	6 GB	10 GB	16 GB
	HDD	500 GB	1 TB	2 TB
System requirement (Client)	CPU	1 GHz	1 GHz	1 GHz
	RAM	4 GB	4 GB	4 GB
	Web Browser	Google Chrome 49 or later(recommended), Internet Explorer 11 (Windows 7, 8), Edge (Windows 10)		

Note

- For the best performance, use only the 64-bit operating system.
- BioStar 2 is optimized for Google Chrome.
- If you use BioStar 2 Cloud, cannot connect to BioStar 2 through Internet Explorer or Edge.
- Use Oracle Database on 64bit system only.
- When using Oracle Database as a T&A database, up to 200,000 users can be managed.

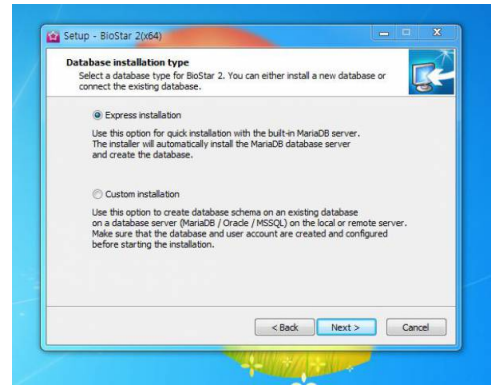
1. Run the setup file according to the server OS version. If it is 64bit OS, run the setup file named BioStar 2 Setup(x64).xxxx.exe.



2. Choose the language and check to accept the agreement.

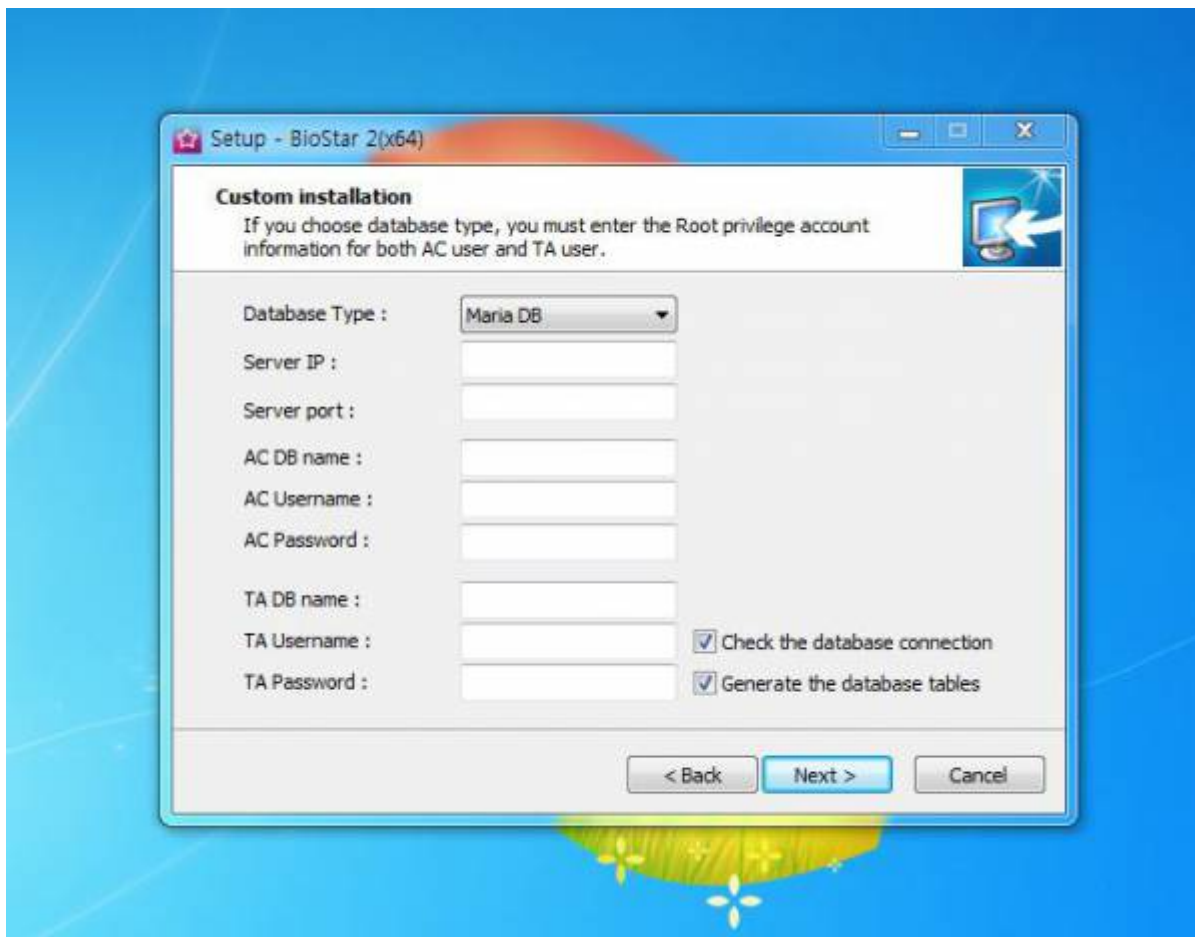
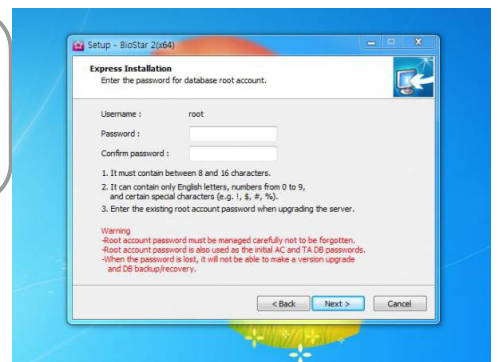
3. Decide the database installation type.

- **Express installation** automatically install BioStar 2 default database, MariaDB.
- **Custom Installation** is required when installing BioStar 2 DB instance in the existing database, such as MSSQL and MariaDB.

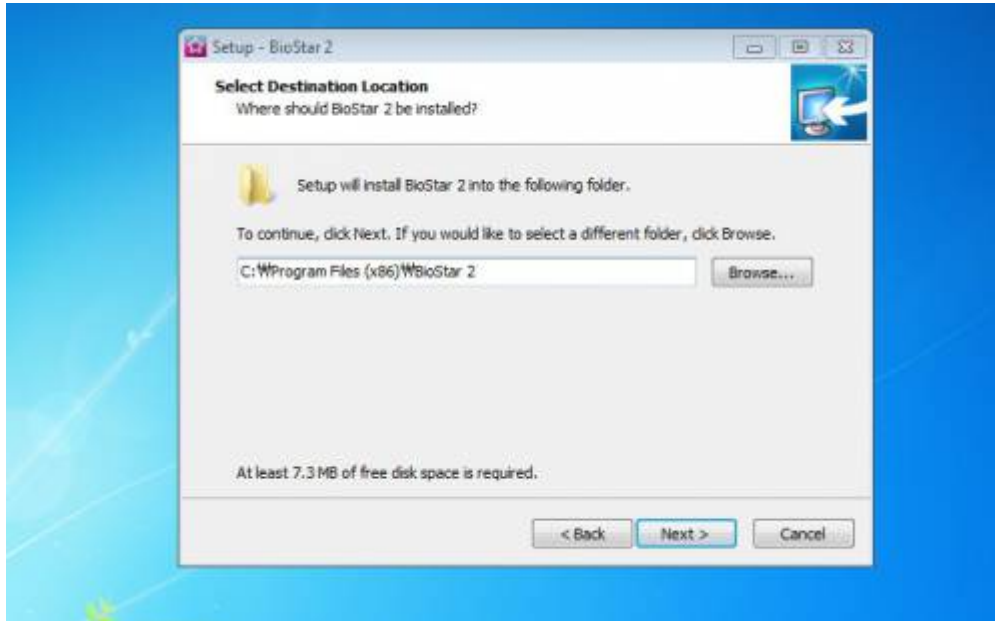


4. When Express Installation is selected, enter the root database password according to the requirement. When Custom Installation is selected, enter the existing database IP, Port, and account information.

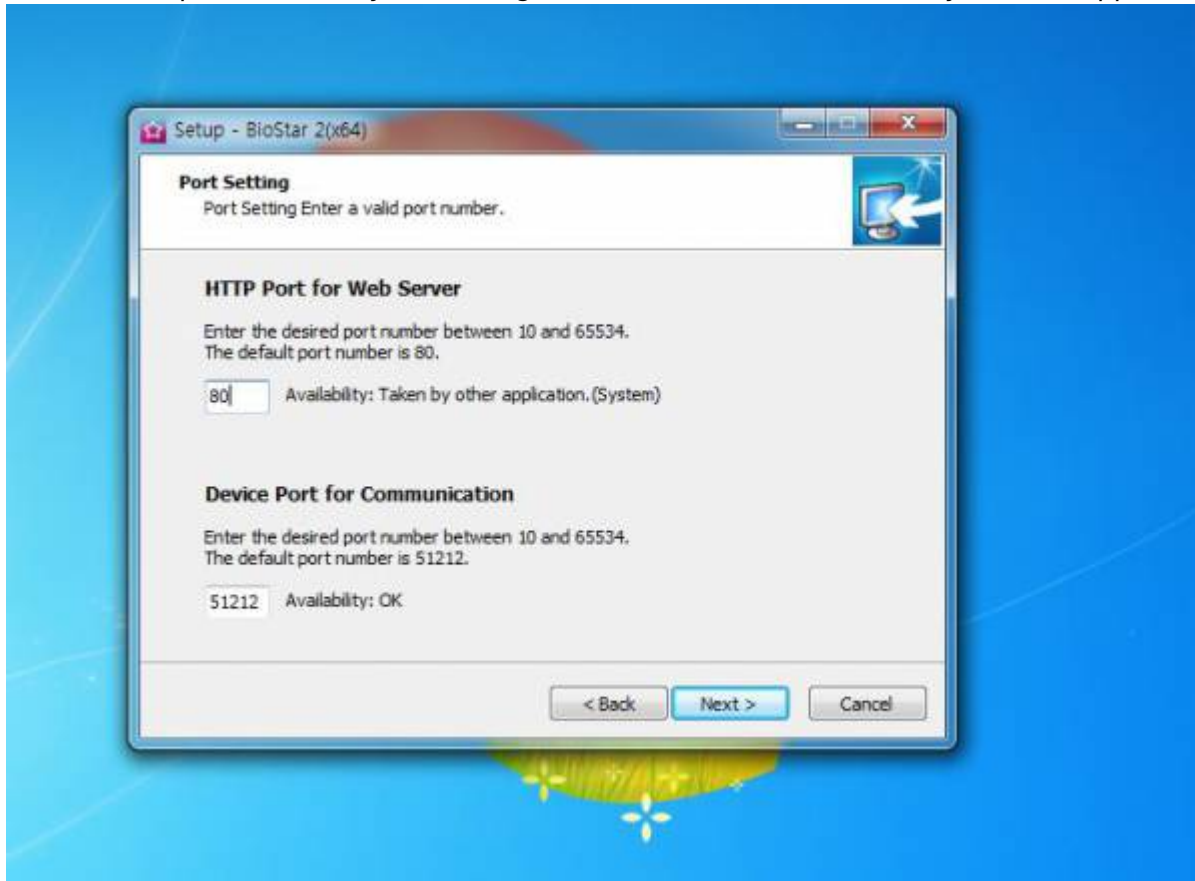
It's very important to keep the password not to be lost, since it's necessary to enter when upgrading the sever version.



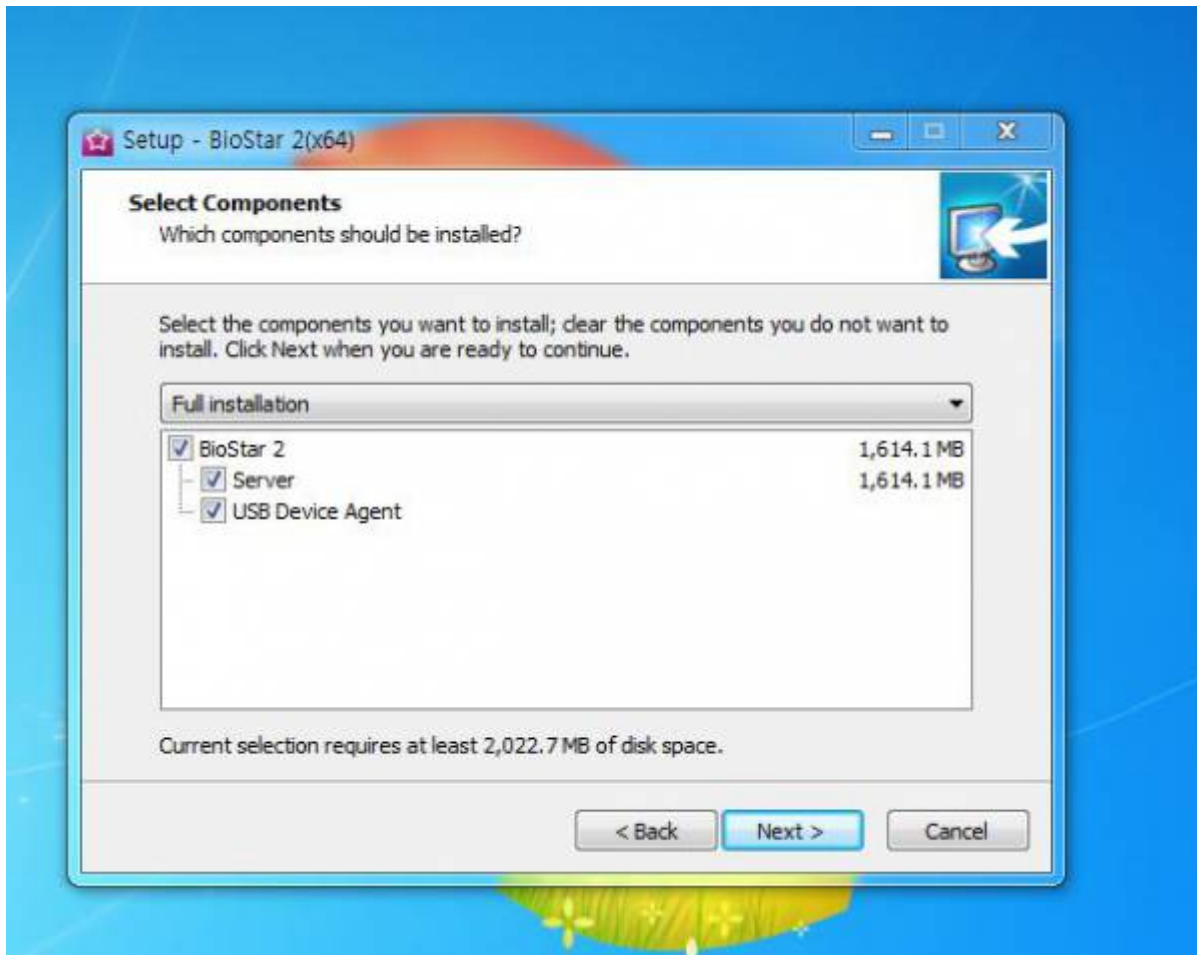
5. Select the location where BioStar 2 will be installed. We recommend to install at the default location.



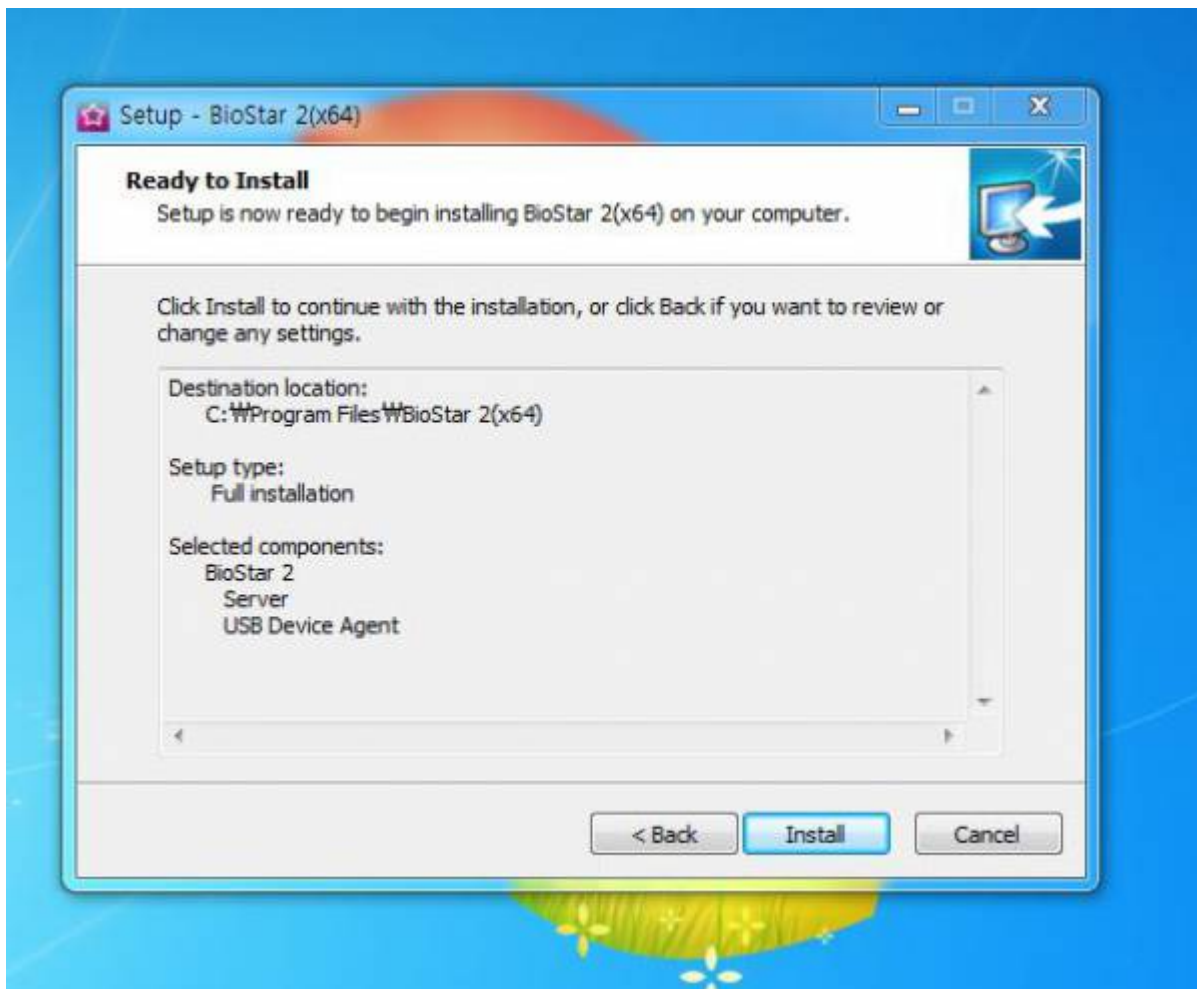
6. Check the port availability and change it when the default is taken by another application.

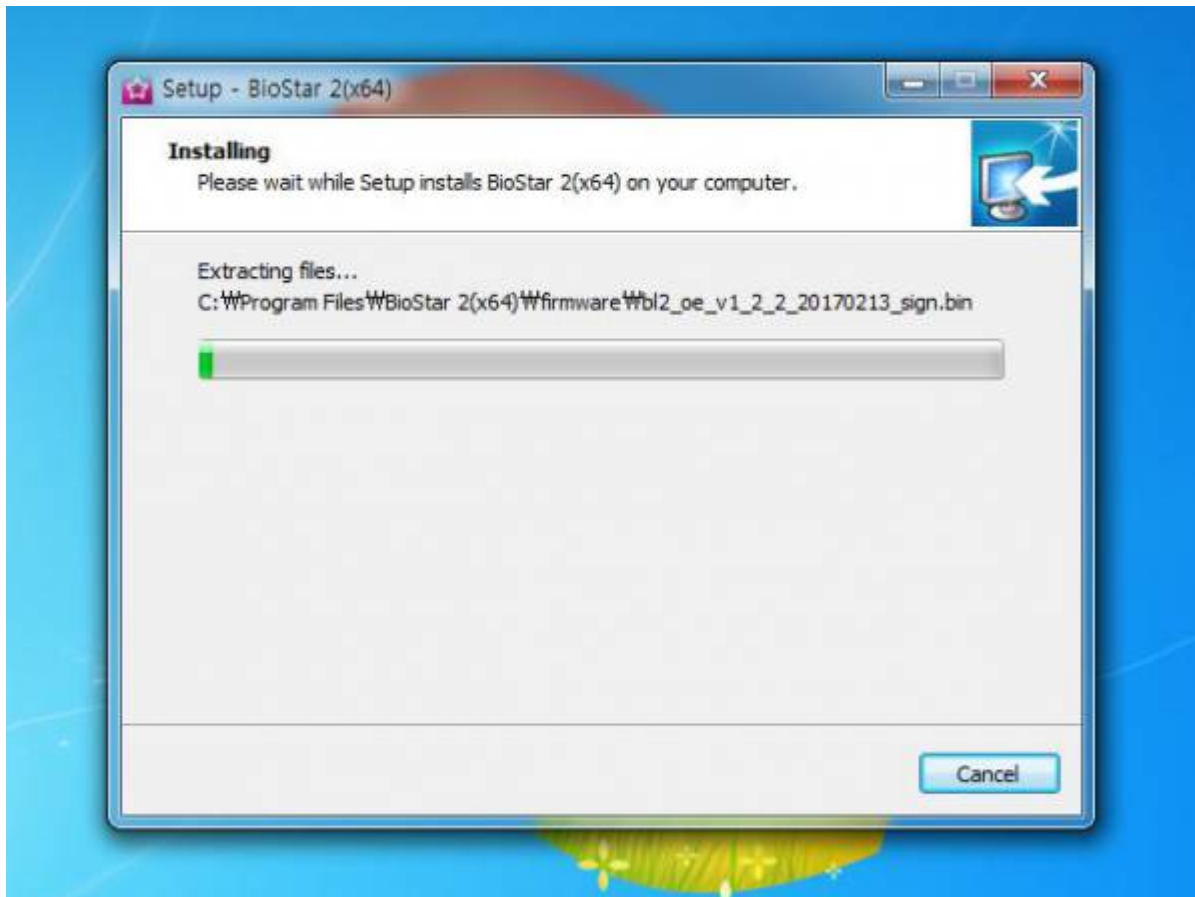


7. Select components you want to install. For the case of using BioMini or USB card enrollment device at a HR desk, It's necessary to install USB device Agent.



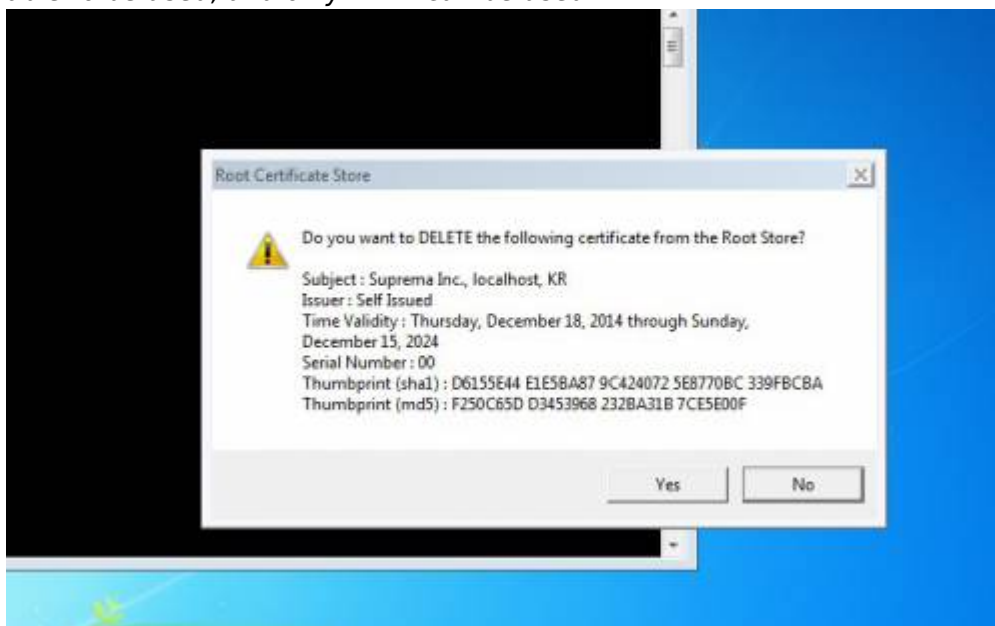
8. Check the details and click 'Install' button to start.





9. Wait the installation progress until it completely finishes. Try not to stop the installation during the progress.

10. After finishing the installation, it asks to confirm Root Certificate Store message. It is used for HTTPS communication between the browser and the server. If you have another certificate, you can apply it manually through BioStar server setting, and if you do not store a certificate, HTTPS is not able to be used, and only HTTP can be used.



11. Also, BioStar setting will be shown along with a pop-up asking for a USB card enrollment device driver installation. If you want to use a USB card enrollment device at the installed server PC, please continue to install the driver.



12. After finishing the installation, check the BioStar Setting to confirm the system status.



==== See Also ==== * *When you cannot start BioStar 2 Server*

From:

<https://kb.supremainc.com/knowledge/> -

Permanent link:

https://kb.supremainc.com/knowledge/doku.php?id=en:how_to_install_biostar_2&rev=1496906095

Last update: **2017/06/08 16:14**