

Table of Contents

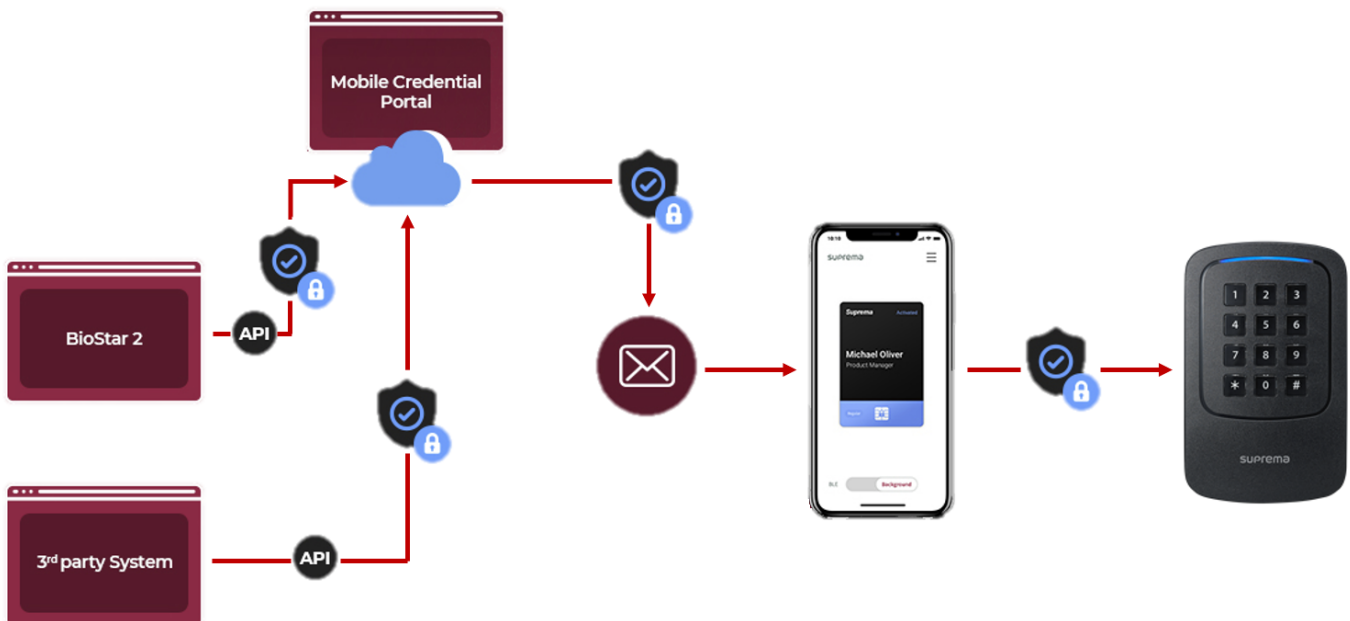
- How to Use 'Suprema Mobile Credential' 1
 - Overview 1
 - How To Use Suprema Mobile Credential with BioStar 2 SW 2
 - Overall Procedure 2
 - Step 1: Join Suprema Mobile Credential Portal 3
 - Step 2: Register a device on Suprema Mobile Credential App 3
 - Step 3: Configure Suprema Mobile Credential Portal information to BioStar2 Settings 3
 - Step 4: Add a device to BioStar 2 SW 3
 - Step 5: Add a new user to BioStar 2 4
 - Step 6: Authenticate the mobile credential on the device 4
 - Extra Step: Confirm the number of the credit to Suprema Mobile Credential Portal 4
 - Detail Procedure 4
 - 1. Join Mobile Credential Portal. 4
 - 2. Register Device on Credential App 6
 - 3. Configure BioStar 2 Mobile Credential 8
 - 4. Add a device to BioStar 2 SW 9
 - 5. Add new user to BioStar 2 10
 - 5-1. Issue Mobile Credential card for the user 10
 - BioStar 2 SW sends Mobile Credential information from to Suprema Mobile Credential portal 11
 - 6. Confirm the email to a mobile and authenticate the created mobile credential on a mobile. 12
 - 6-1. Please confirm the email of the new user of BioStar2 to his or her mobile and click the download link from the email content. 12
 - 6-2. You need to make sure that requested field is correctly filled in. 12
 - 6-3. Turn on BLE or NFC of your mobile configuration. 12
 - 6-4. Place your mobile credential on the device. 12
 - 7. Extra step I: How To Check the number of Credit 13
 - 8. Extra step II: How To Check the number of Credential Status 14
 - Additional information for Mobile Credential 15
- Links for information about Mobile Credential 15
- Mobile Credential Q&A 15

How to Use 'Suprema Mobile Credential'

Overview

Before the BioStar v2.7.12, BioStar 2 user credentials were **fingerprint, face** and **card**. But from the BioStar v2.7.12, the new credential, **Suprema Mobile Credential**, is supported. With **Suprema Mobile Credential**, you can use your smartphone as a credential and access doors, gates and more. Through **Suprema Mobile Credential**, you can meet improved user convenience and easier way to support 3rd party controller.

Contents in this page are about how to setup the **Suprema Mobile Credential** for BioStar 2 usage. Links for extra information about Suprema Mobile Credential are listed up on the bottom of this page.



[Data Flow of Suprema Mobile Credential from BioStar 2 SW to a device]

- Suprema Mobile Credential and BioStar 2 Mobile Card are different products. Links for the detailed information are listed up on the bottom of this page. Or, you can read that first before reading the below. Click the [link 1](#) and the [link 2](#).
- **CANNOT** enroll a new Suprema Mobile Credential directly from Suprema devices; assign through the BioStar 2 or manually input the card number.
- Suprema Mobile Portal will allow to register the device for first installation case. **If you already connected to BioStar2 SW and have Suprema devices which are already in use** - include XPass 2, you need to **remove all user data in the device, delete the device from BioStar 2 and reset the device before starting Mobile Credential**. Check the linked article which describes sample steps for your case. ([Link](#))

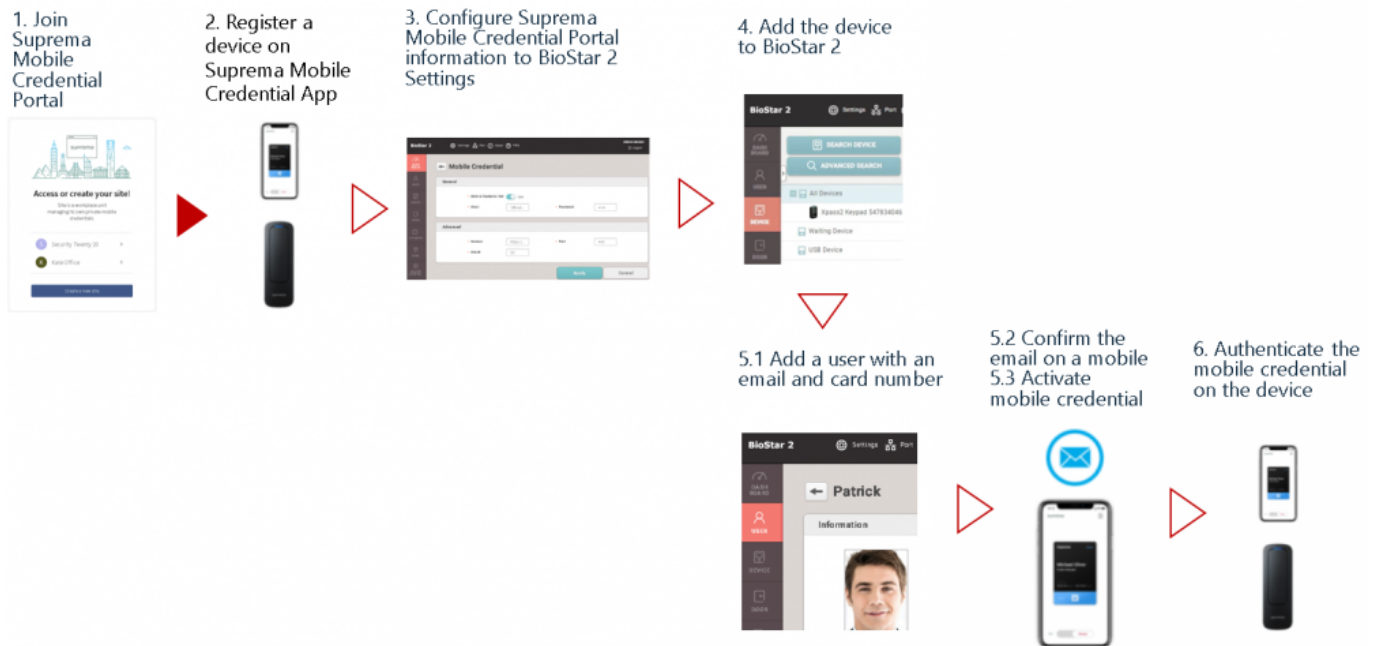
How To Use Suprema Mobile Credential with BioStar 2 SW



Video

Overall Procedure

This is brief explanation about the setup procedure.
For more details, skip this and go to the below **2. Detail Procedure.**



Step 1: Join Suprema Mobile Credential Portal

- Create an account to make the mobile credential portal(<https://mc.suprema.io>).
- Sign up Suprema Mobile Credential Portal and get the detailed information to the portal.
- 5 Credits are given when a new site is created for demo and test purposes.

Step 2: Register a device on Suprema Mobile Credential App

- Download Suprema Mobile Credential App on a mobile and logon with the portal information.

The registration progress will be improved to next version of BioStar 2.

Step 3: Configure Suprema Mobile Credential Portal information to BioStar2 Settings

- Go to BioStar2 > **Settings** > **Mobile Credential** and configure the information such as the site ID, administrator email, and password of the created portal.

Step 4: Add a device to BioStar 2 SW

- Go to BioStar2>Device>Search Device or Advanced Search>Add the device to BioStar2.
- If you already connected to BioStar2 SW and have Suprema devices which are already in use, click [Link](#).

- XPass 2 is only available to use Suprema Mobile Credential App.
- Suprema will provide the feature for another devices. For more detailed schedule, contact to Suprema sales team or Suprema Authorized Partner.

Step 5: Add a new user to BioStar 2

- Go to BioStar2 > **User > Add new user.**
- Enter user name, an email address.
- Find Credential > Click **Mobile Credential.**
- Create a virtual card number or assign the card number.

Step 6: Authenticate the mobile credential on the device

- Confirm the email of the new user of BioStar 2 to the mobile of the user.
- Click a download link from the email content.
- Confirm the issued mobile card and turn on BLE or NFC.
- Put your Mobile Credential on the device. If the card information is registered to the device, the LED of the device will be green and there will be beep sound.

Extra Step: Confirm the number of the credit to Suprema Mobile Credential Portal

- Deduct the credit once a user clicks the download link in the email.
- License code can be purchasable from Suprema or MOCA System's Sales team.
- Issuable Credit is charged when License code is activated.

Detail Procedure

1. Join Mobile Credential Portal.

- Portal Address: <https://mc.suprema.io>
- Sign up and Create your site, purchase credits.
- 5 Credits are given when a new site is created for demo and test purposes.



Video

Welcome to Suprema Mobile Credential Portal

Suprema mobile credential portal is the easy and convenient mobile access hub for any types of workplaces & access control security systems. Let's get started!!



Smart access ID management for smart work spaces



Make a great impression with smart access experience



Integrate security & convenience with intelligent mobile access



- Confirm your Site ID to [Site & License]. (<https://mc.suprema.io/sitemanager/site/siteLicense>)

Go to <https://mc.suprema.io/sitemanager/site/siteLicense> and confirm your Site ID

• Site Profile

Site ID

Site Name

Messaging Option Text Message Email

Text Message

Mobile Credential

Registered Device

Site & License

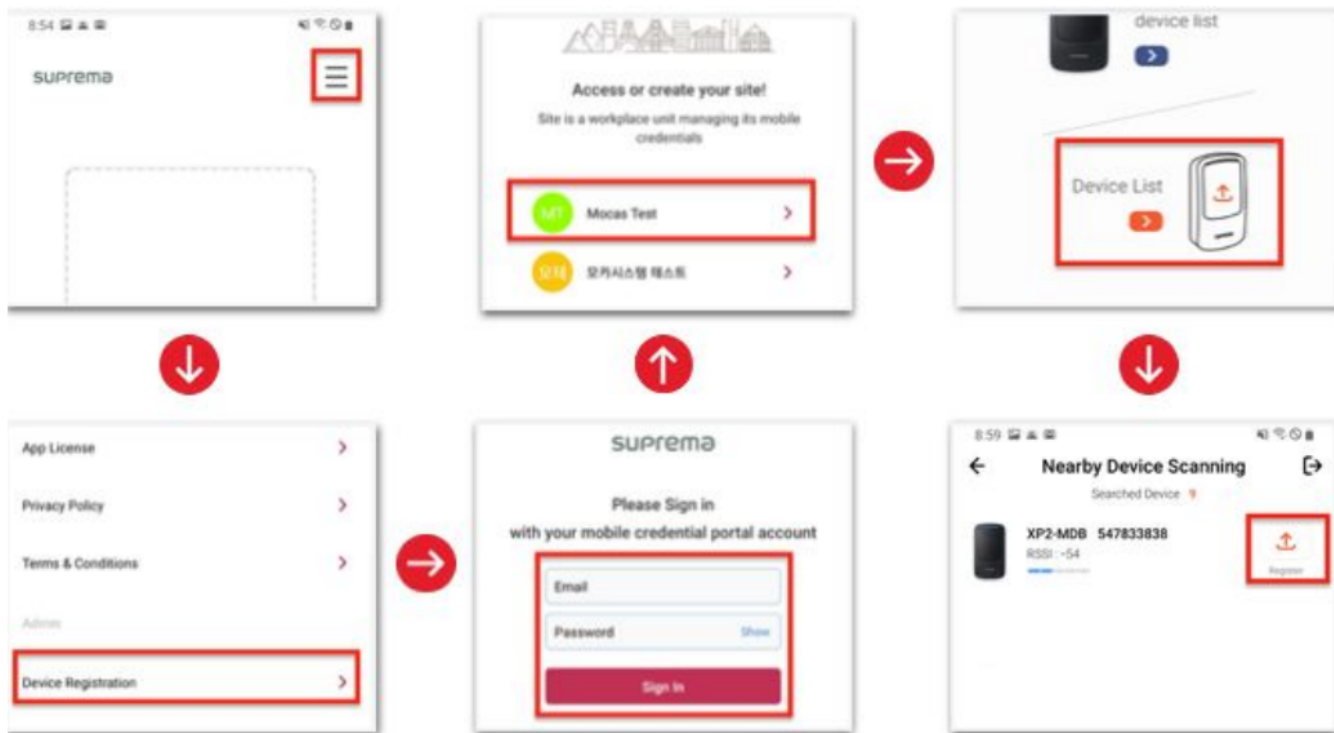
Admin

Credential Settings

2. Register Device on Credential App



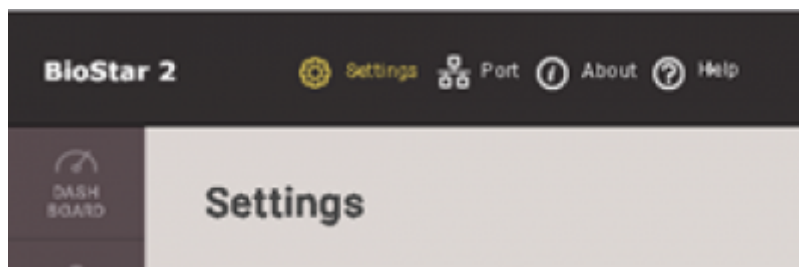
Video

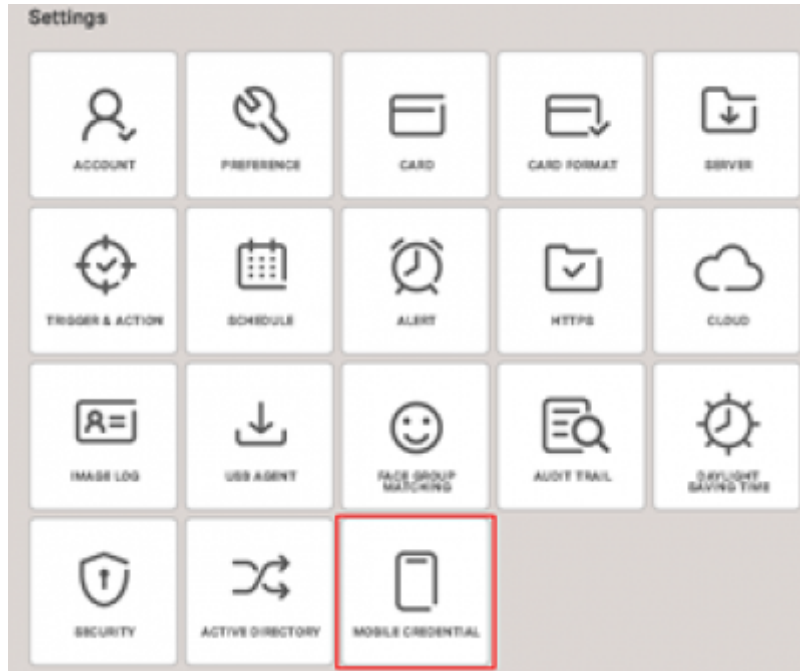


- Click three strikes button at the top right corner.
- Click Device Registration from menu.
- Log in with the same account of Site admin in portal.
- Select the site to register the device.
- Click Device List.
- Click Register.

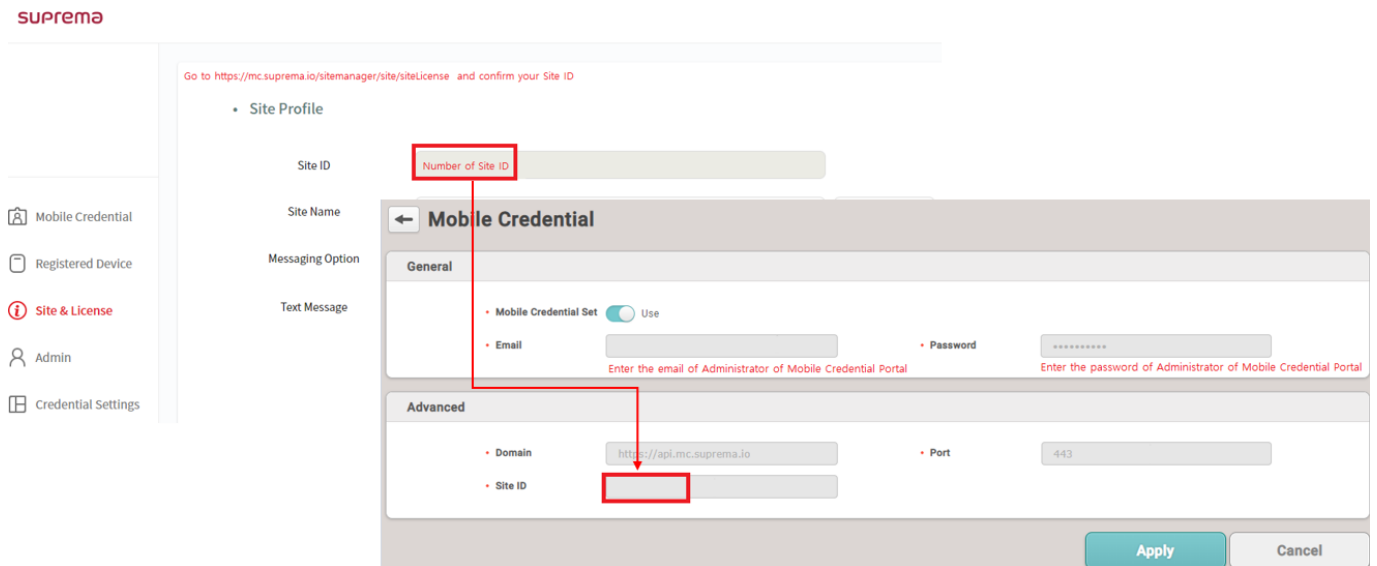
3. Configure BioStar 2 Mobile Credential

- Go to BioStar 2 > **Settings** and click **MOBILE CREDENTIAL**.





- BioStar 2 Mobile Credential setting should be based on the portal site data.
- Email, Password : the data of the user who signed in the portal.
- Site ID : the site ID which user created through the portal.
- Domain : <https://api.mc.suprema.io> (default)
- Port : protocol port number of portal site (default)

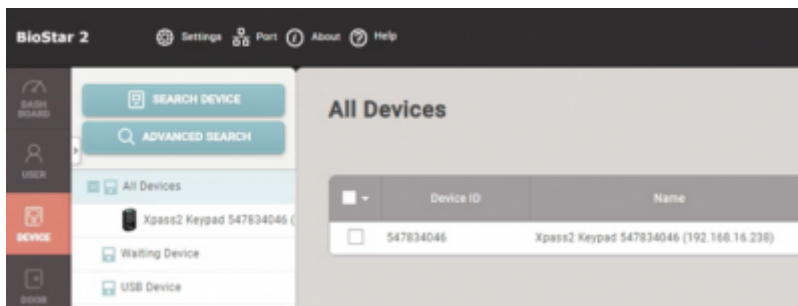
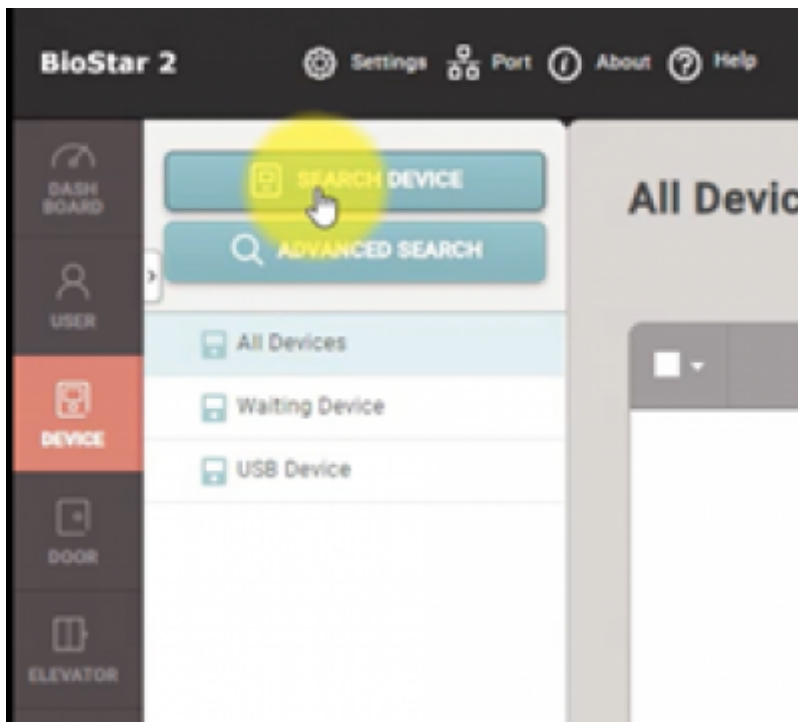


4. Add a device to BioStar 2 SW

- Go BioStar 2 > **Device** > **Search Device** or **Advanced Search** to search a connected device.

• If you are using XPass 2 with BioStar 2 before using Suprema Mobile Credential, please click

[Link](#). You should delete all information from the device.

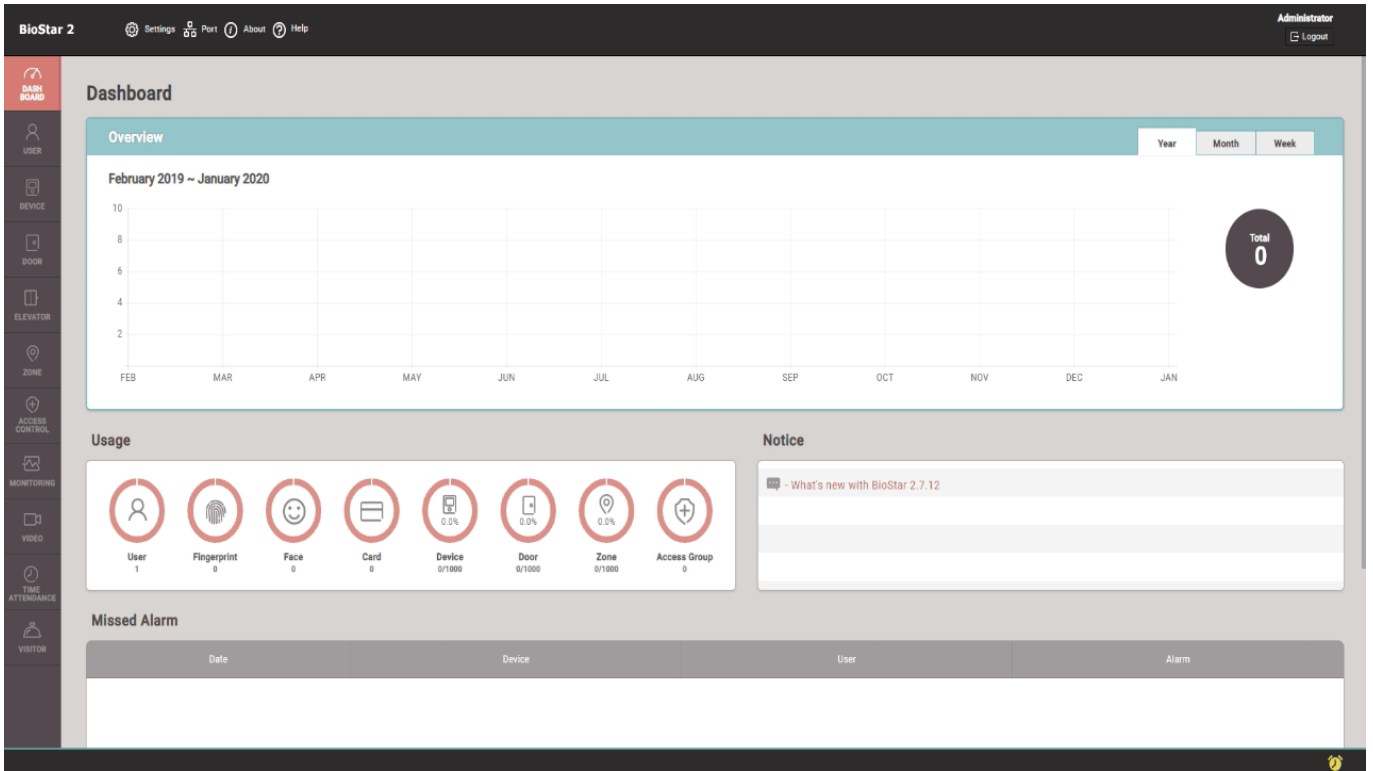


- XPass 2 is only available to use Suprema Mobile Credential App.

5. Add new user to BioStar 2

5-1. Issue Mobile Credential card for the user

- Go BioStar 2 > **User** > **ADD USER**.
- Enter user name, an email address and click **Credential** > **+ Mobile**.
- When you set 'Use' for Mobile Credential, you can find 'Mobile' button from user detail page.



BioStar 2 SW sends Mobile Credential information from to Suprema Mobile Credential portal

- Please remind that the 'Credit' will deduct in this step.
- Issue new Mobile Credential card.
- Re-issue the current Mobile Credential card.
- Re-issue the 'Before Activation' status Mobile Credential card.
- When you re-issue the Mobile Credential card, the former data becomes invalid.
- If a same user ID does not exist in CSV file, you can get user data through 'Preserve Data' or 'Overwrite'.
- If a same user ID exists in CSV file, you can get user data through 'Overwrite'.



6. Confirm the email to a mobile and authenticate the created mobile credential on a mobile.

6-1. Please confirm the email of the new user of BioStar2 to his or her mobile and click the download link from the email content.

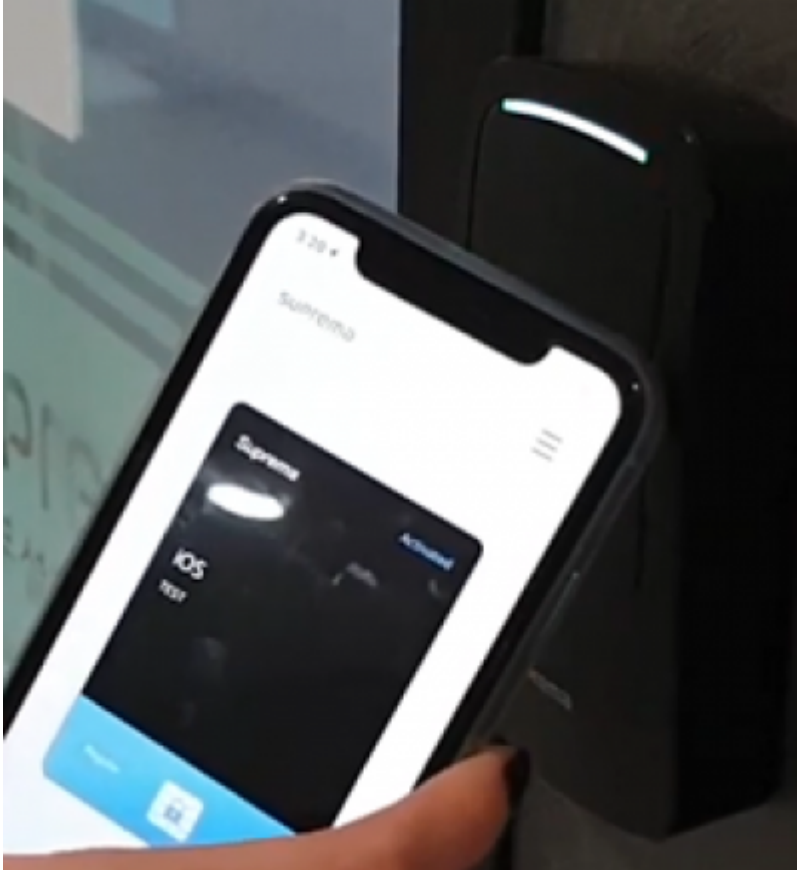
6-2. You need to make sure that requested field is correctly filled in.

- e.g. If the message option is 'Email', then the 'Email' field in 'BioStar 2 > User > Information > Email' should have data.
- If you are concerning to issue Mobile Credential via SMS, please contact Suprema Sales representative.

6-3. Turn on BLE or NFC of your mobile configuration.

		<p>Communication</p> <ul style="list-style-type: none"> • iOS - BLE Only • Android - NFC or/& BLE (NFC is default) <p>NOTE for Android</p> <ul style="list-style-type: none"> • NFC is recommended even for both NFC & BLE supported mobile devices, because of its more consistent performance. • Among NFC modes, NFC card mode is recommended
<p><IOS> BLE Only</p>	<p><Android> NFC or/& BLE (NFC is default)</p>	<p>Information</p> <ul style="list-style-type: none"> • Basic information of current usage <p>Device Registration</p> <ul style="list-style-type: none"> • Access to the account and register the device on the Site

6-4. Place your mobile credential on the device.



Tutorial of Mobile Credential Usage - YouTube Link

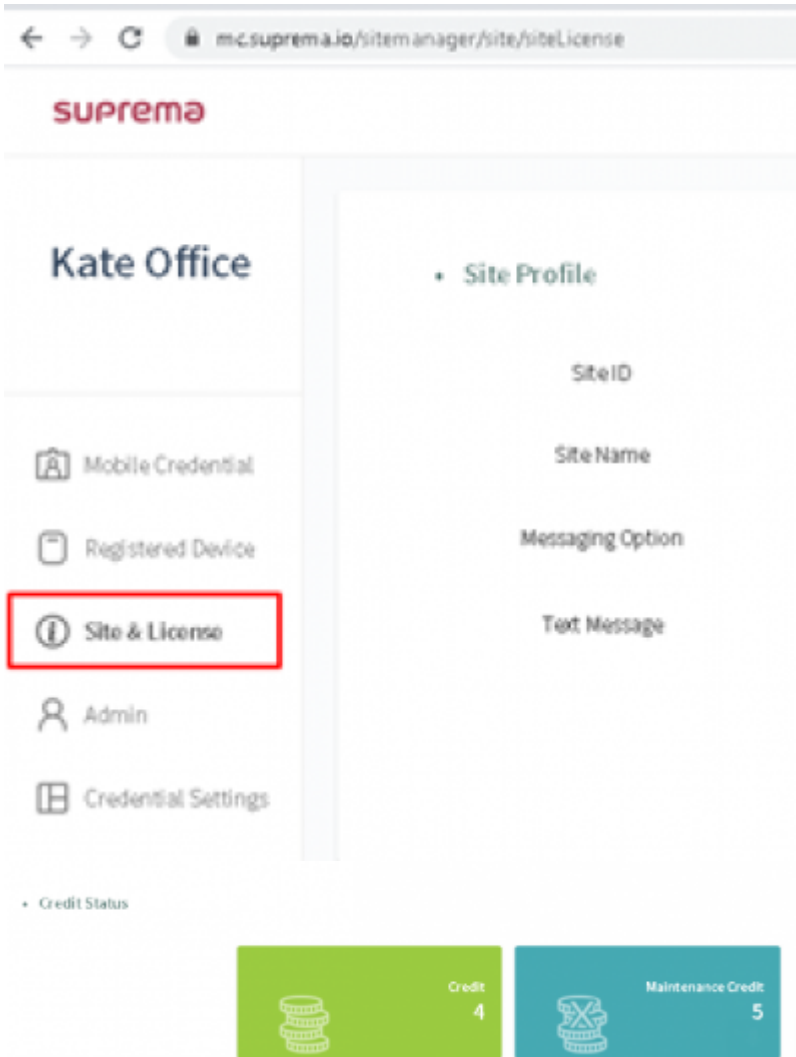
[How to use your mobile credential - Android/BLE](#)

[How to use your mobile credential - Android/NFC](#)

[How to use your mobile credential - iPhone/BLE](#)

7. Extra step I: How To Check the number of Credit

- Go to Suprema Mobile Credential Portal and sign in with your ID/PW.
- Click **Site&License**.



Regarding the purchase of the license for more than 5 free credit, contact to Suprema or MOCA System’s sales team.

8. Extra step II: How To Check the number of Credential Status

- Go to Suprema Mobile Credential Portal and sign in with your ID/PW.
- Click **Site&License**.



- Issued: The number of Issued Mobile Credential in the list. (If the mobile credential is deleted from the list, it is not shown as issued. Therefore, it’s necessary to keep the mobile credential data in the list and minimize the occasions to delete the credential.)
- Total: Total number of Issued and Issuable Mobile Credential

Additional information for Mobile Credential

1. When you issue the Mobile Credential card, you can put character, ' ' (space), number and '_' (under bar) for user name.
2. If the card is blocked, the card number will be updated in 'Setting > Card > Blacklisted Card'.
3. If you delete users (delete selected users / delete all users), then issued cards will be automatically deleted from the Mobile Credential portal.
4. Even though you delete all users, Administrator user will remain and the Mobile Credential card for Administrator will be kept.

Links for information about Mobile Credential

- Suprema official website - Mobile Credential page : [Suprema Mobile Credential](#)
- Suprema Mobile Credential portal : [Link](#)
- Suprema Mobile Credential portal user guide : [Link](#)
- MOCA system Youtube channel : [Link](#)

Mobile Credential Q&A

Q 1 > How can we get the Mobile Credential License Policy and how can we purchase Mobile Credential Credits?

A 1 > Please contact your Suprema regional sales representative. If you do not know the exact sales representative, please contact Suprema through our official web site. ([Link](#))

Q 2 > What is difference between Suprema Mobile Credential and BioStar 2 Mobile Card?

A 2 > Please follow the linked article which is about your answer. ([Link](#))

Q 3 > Can we keep using BioStar 2 Mobile Card if we has been used? How does the policy go for BioStar 2 Mobile Card?

A 3 > Please check the linked page to get more detailed information. Login is required to check the link. ([Link](#))

From:
<http://kb.supremainc.com/knowledge/> -

Permanent link:
http://kb.supremainc.com/knowledge./doku.php?id=en:how_to_use_suprema_mobile_credential&rev=1585046938

Last update: **2020/03/24 19:48**