

## Table of Contents

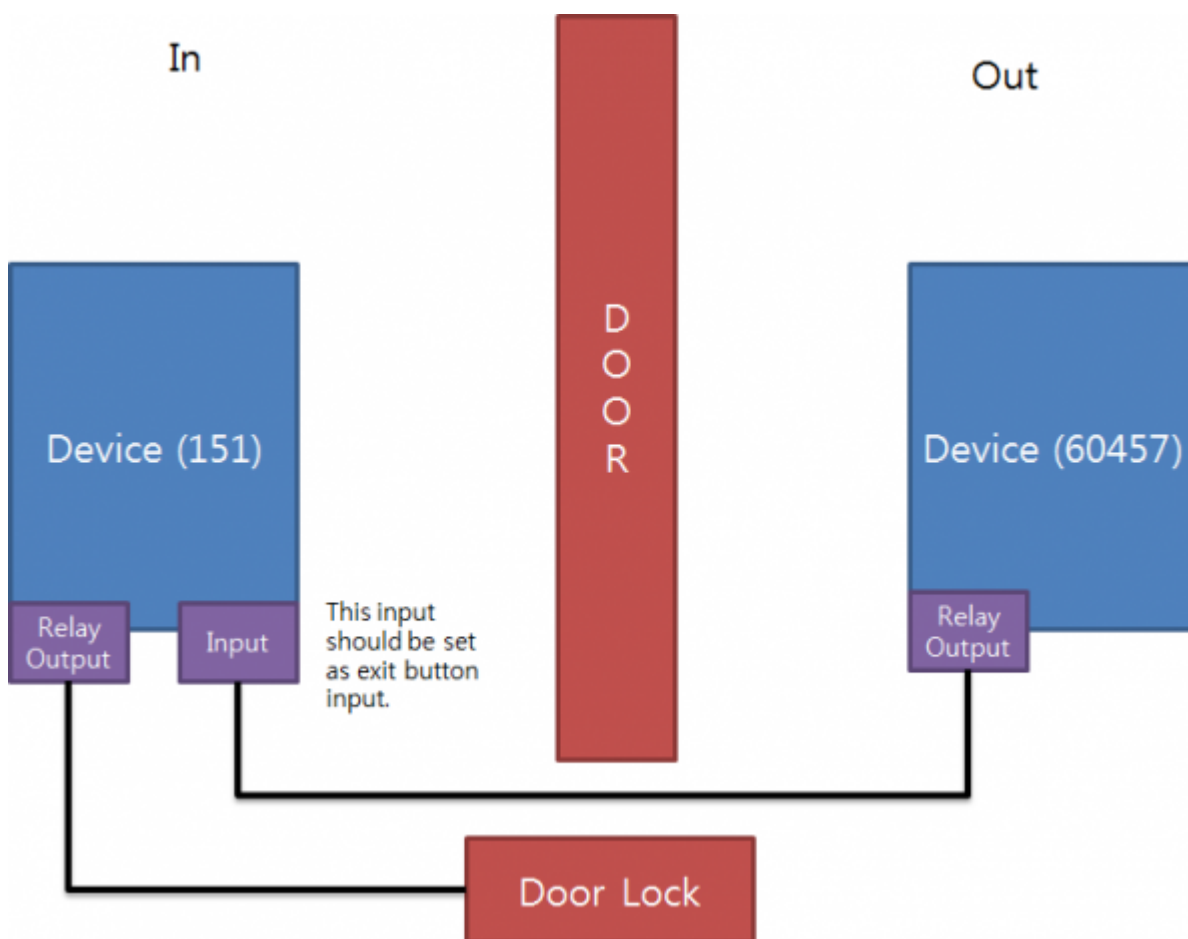
How to connect two devices to one door without using RS485 .....	1
--	---

BioStar 1, RS485, Cnnection

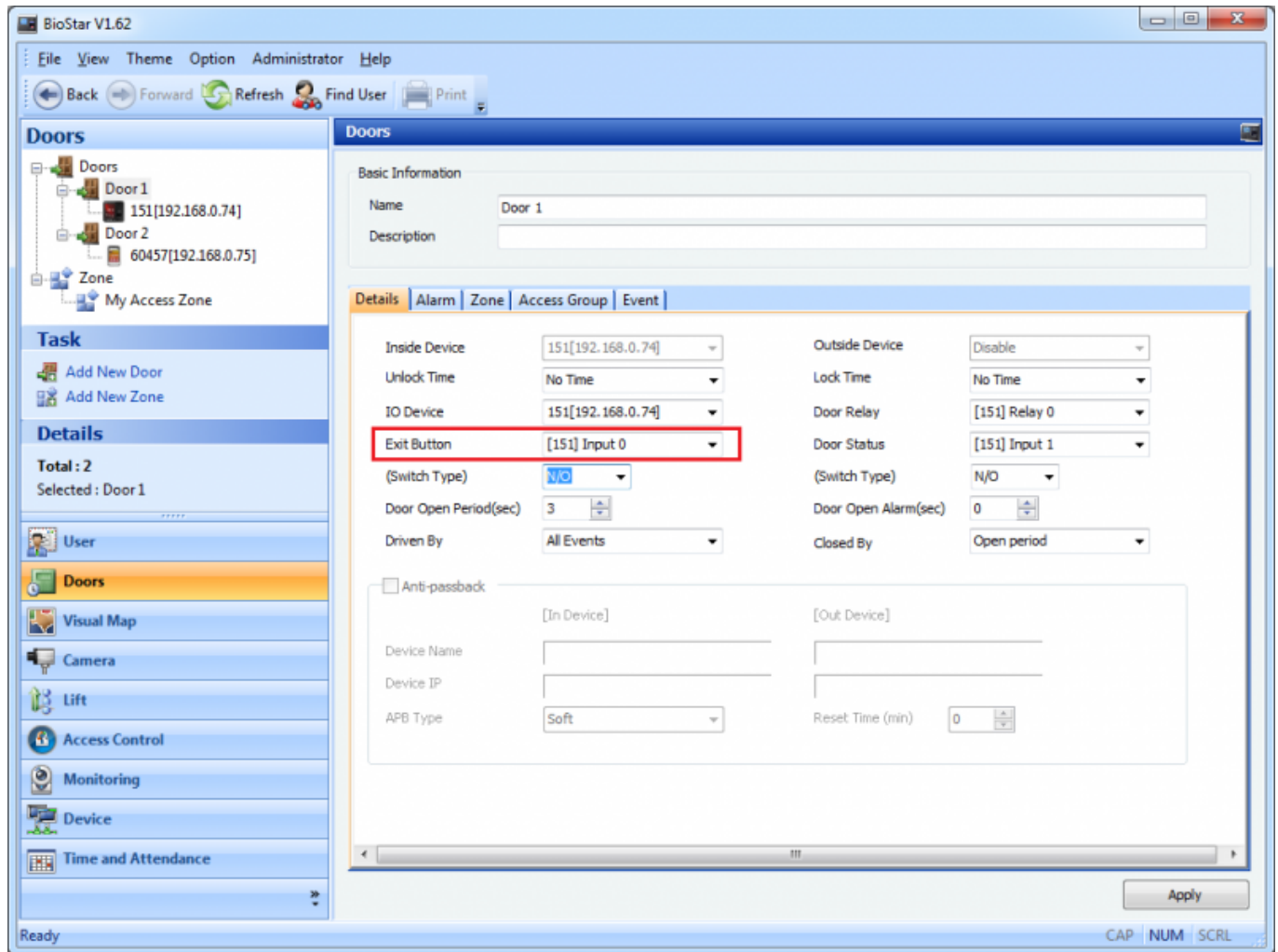
## How to connect two devices to one door without using RS485

When you attach in and out devices to Door, you need to connect those two devices via RS485 setting one of them as a master device. But there is an alternative way to connect the devices, directly connecting the output of one device to the input of the other device.

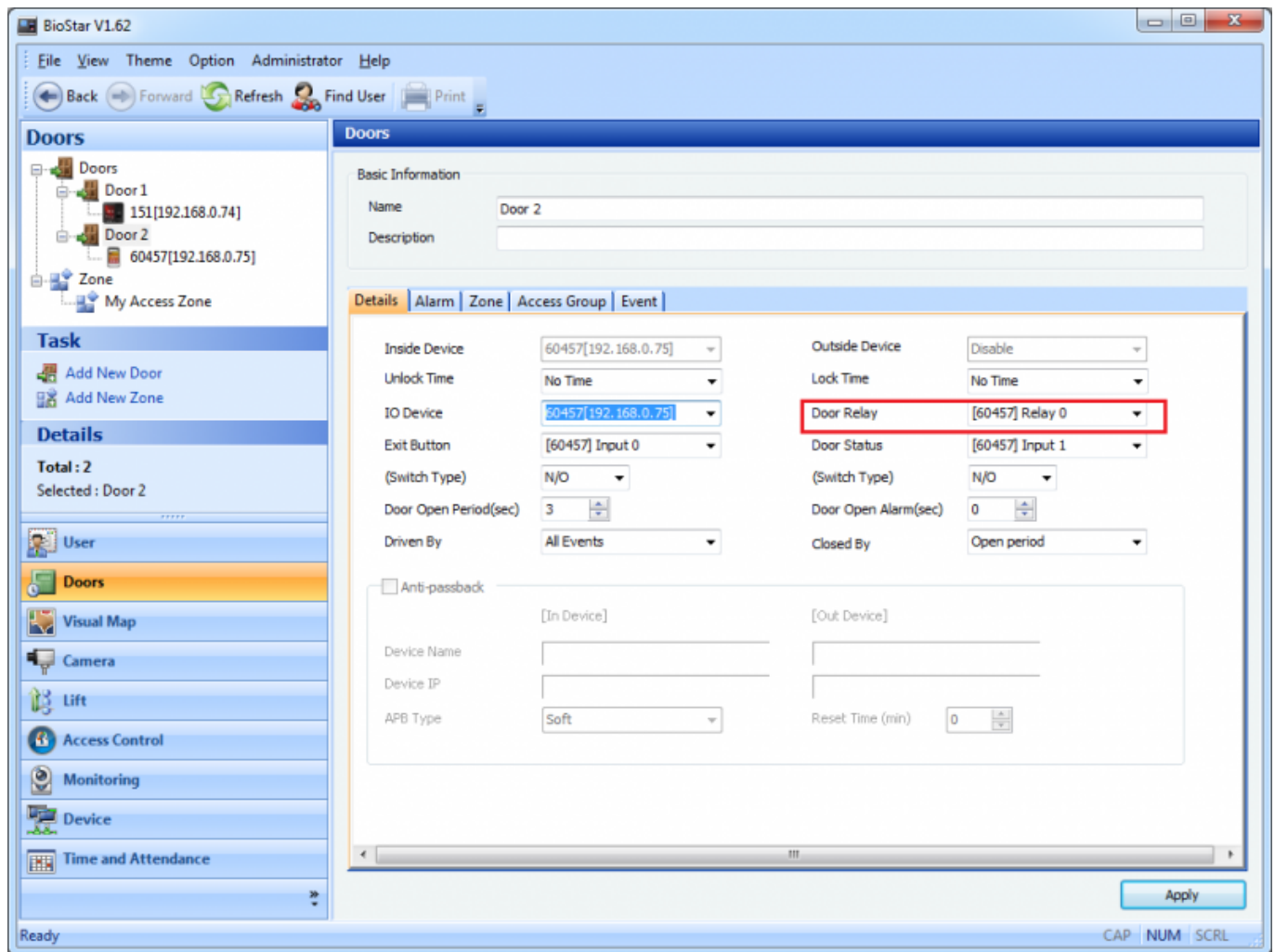
In this example, we will directly connect the two devices (60457, 151) to one door without using RS485. The relay output of Device 60457 should be connected to the input of Device 151 and the input of Device 151 should be set as exit button input. Then, when a person gets authenticated on Device 60457, the relay of Device 60457 gets activated and then Device 151 activates its relay as if its exit button is pushed, thus opening the door.



You can set the input of Device 151 as exit button input as shown in the figure below:



The configuration of Door 2 is as follows:



From:  
<https://kb.supremainc.com/knowledge/> -

Permanent link:  
[https://kb.supremainc.com/knowledge/doku.php?id=en:1xfaq\\_how\\_to\\_connect\\_two\\_devices\\_to\\_one\\_door\\_without\\_using\\_rs485](https://kb.supremainc.com/knowledge/doku.php?id=en:1xfaq_how_to_connect_two_devices_to_one_door_without_using_rs485)

Last update: 2015/10/08 16:21