

Table of Contents

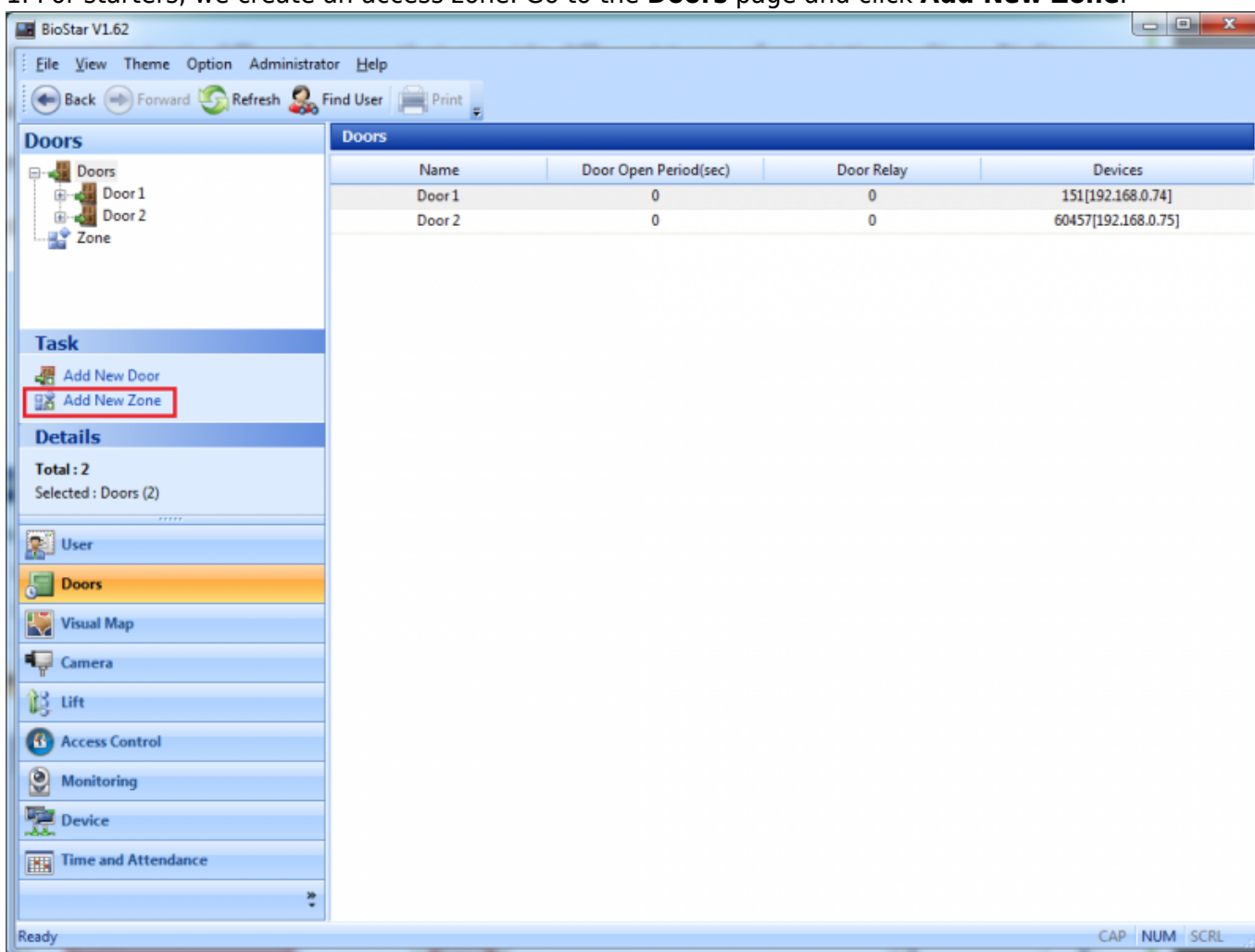
How to get log records from slave devices 1

How to get log records from slave devices

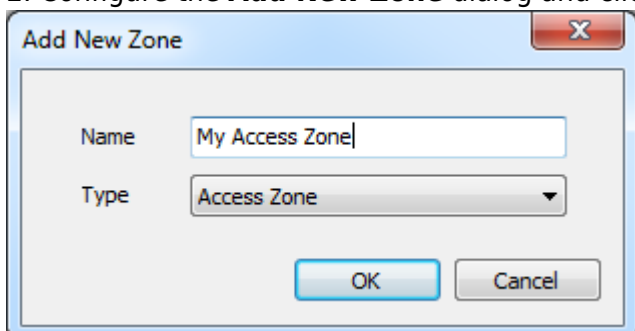
When you configure zones on the BioStar client, you need to set master/slave relationships between the devices that belong to the same zone. You can connect the master device with the slave devices via RS485. In this case, you can collect log records of the slave devices through the master device.

In this example, we will set master/slave relationships between devices in the same access zone.

1. For starters, we create an access zone. Go to the **Doors** page and click **Add New Zone**.

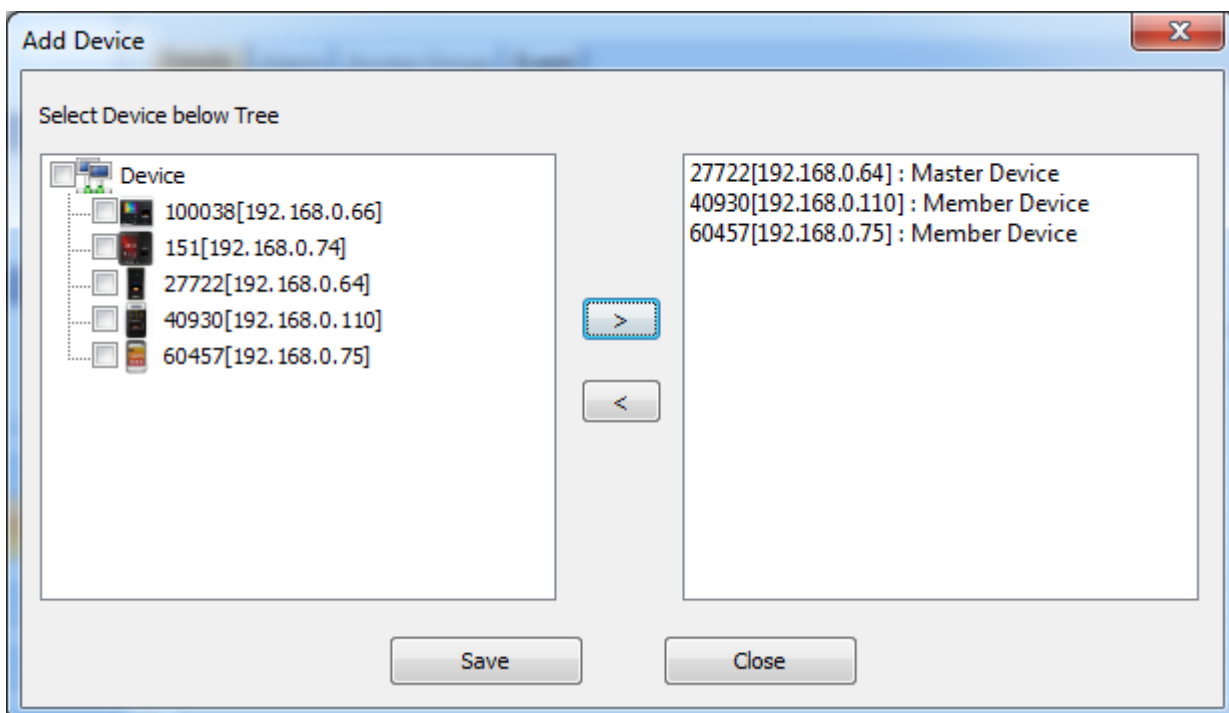
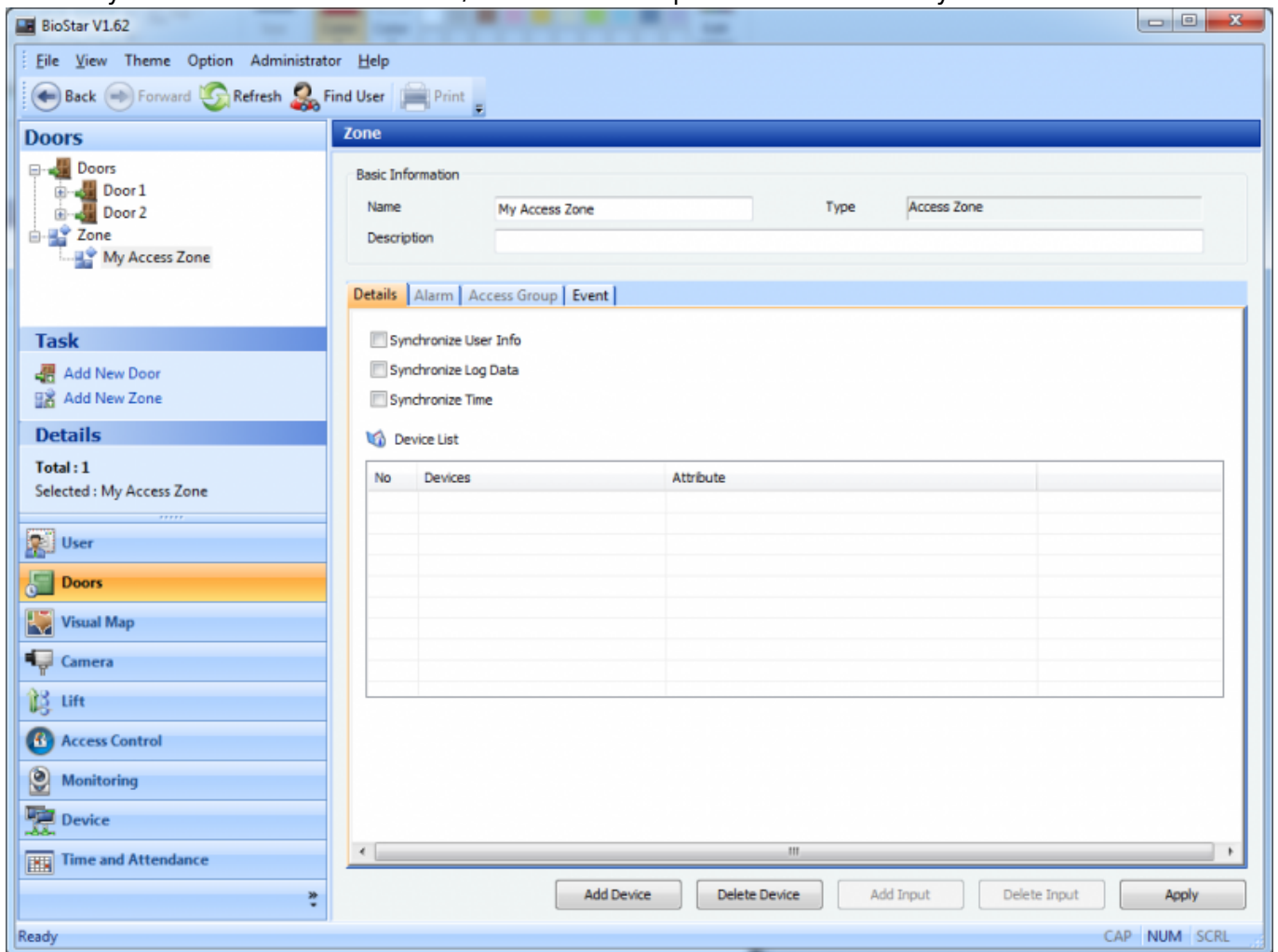


2. Configure the **Add New Zone** dialog and click **OK**.



3. Click **Add Device** to add devices to the zone. This brings up the **Add Device** dialog. Choose

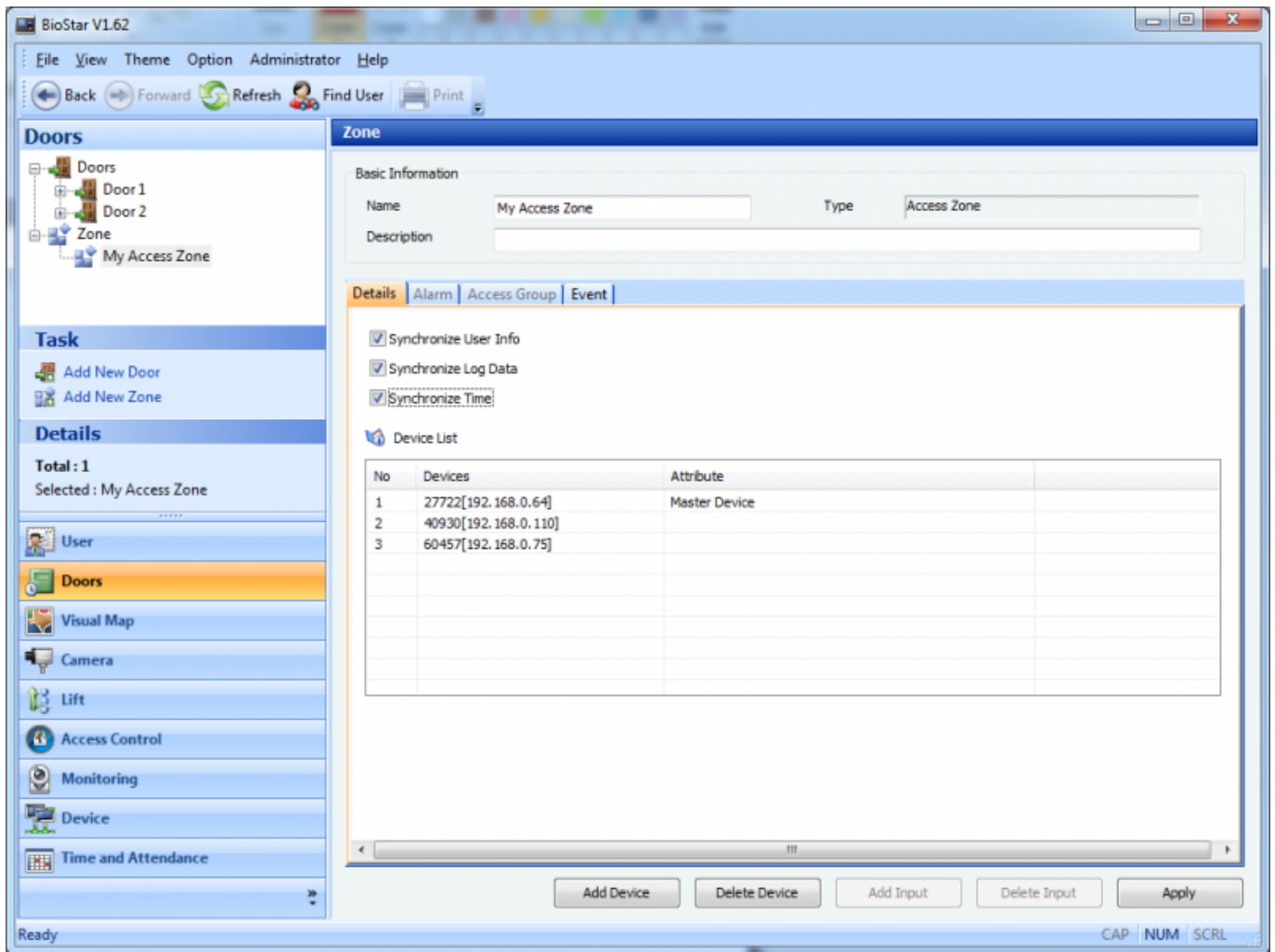
devices you want to add. The master/slave relationship will be automatically created.



4. Choose the options on the **Details** tab. You can choose what to synchronize between the devices in the zone.

- **Synchronize User Info:** This automatically synchronizes user information of the devices.

- **Synchronize Log Data:** This automatically synchronizes log records of the devices.
- **Synchronize Time:** This automatically synchronizes the times of the devices.



5. Click **Apply** to complete the configuration.

From: <http://kb.supremainc.com/knowledge/> -

Permanent link: http://kb.supremainc.com/knowledge/doku.php?id=en:1xfaq_how_to_get_log_records_from_slave_devices

Last update: **2015/10/08 15:49**