

**Table of Contents**

How to register Command card ..... 1

    Command card types ..... 1

    Registering command cards on BioStar ..... 1

    Deleting Command cards ..... 3

## BioStar 1, Command Card

# How to register Command card

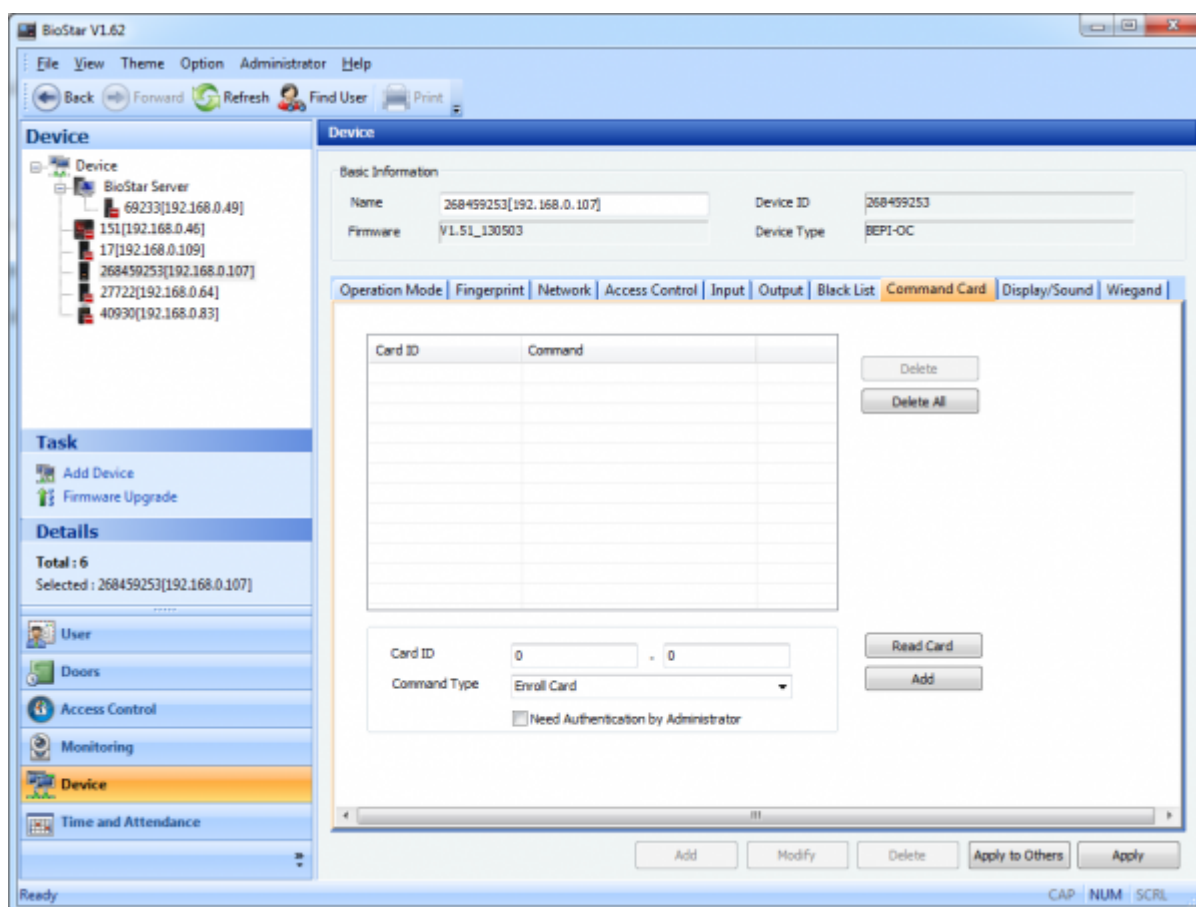
## Command card types

There are three types of Command cards as follows:

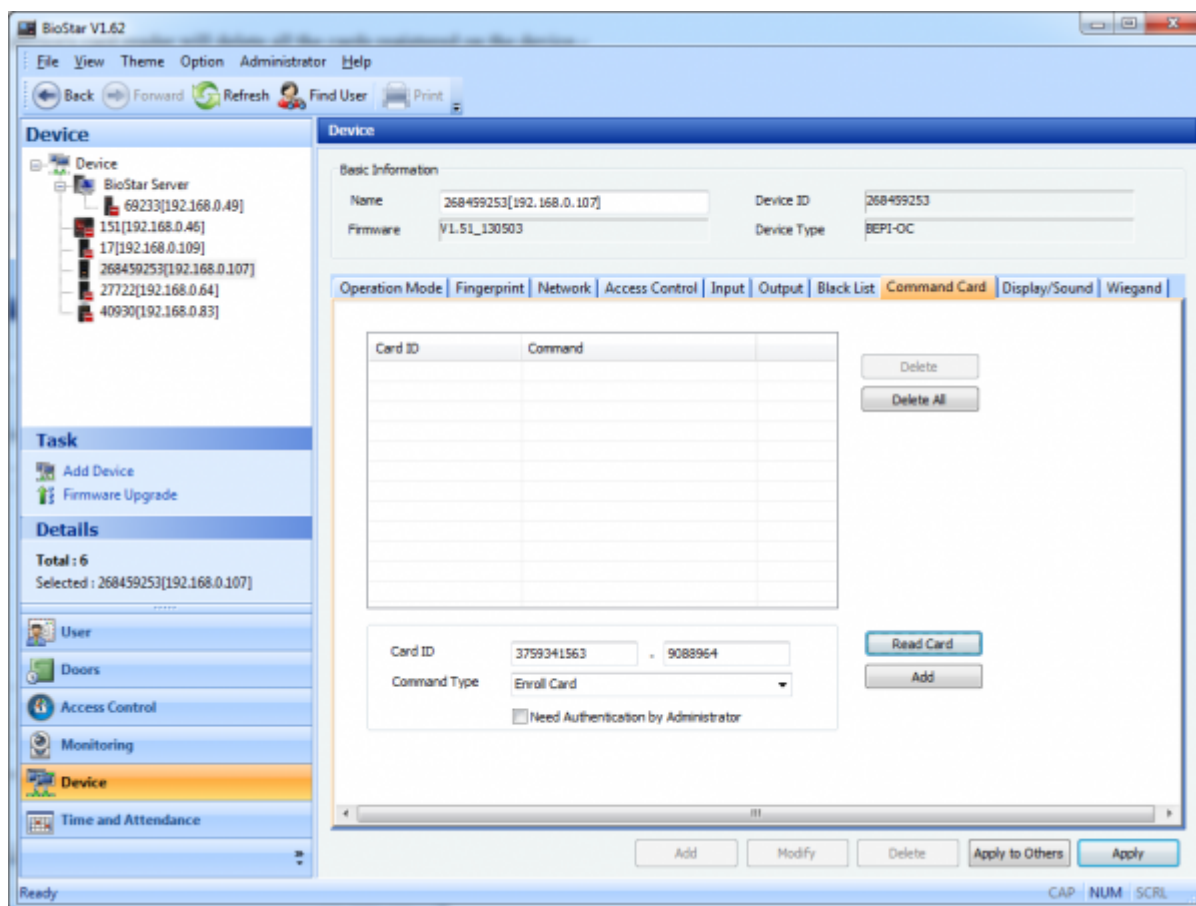
- **Enroll Card:** After tapping an Enroll Card on the device's card reader, you can add a card to the device by tapping the card that you want to add on the reader.
- **Delete Card:** After tapping a Delete Card on the device's card reader, you can delete a card from the device by tapping the card that you want to delete on the reader.
- **Delete All Card:** Tapping a Delete All Card on the device's card reader will delete all the cards registered on the device.

## Registering command cards on BioStar

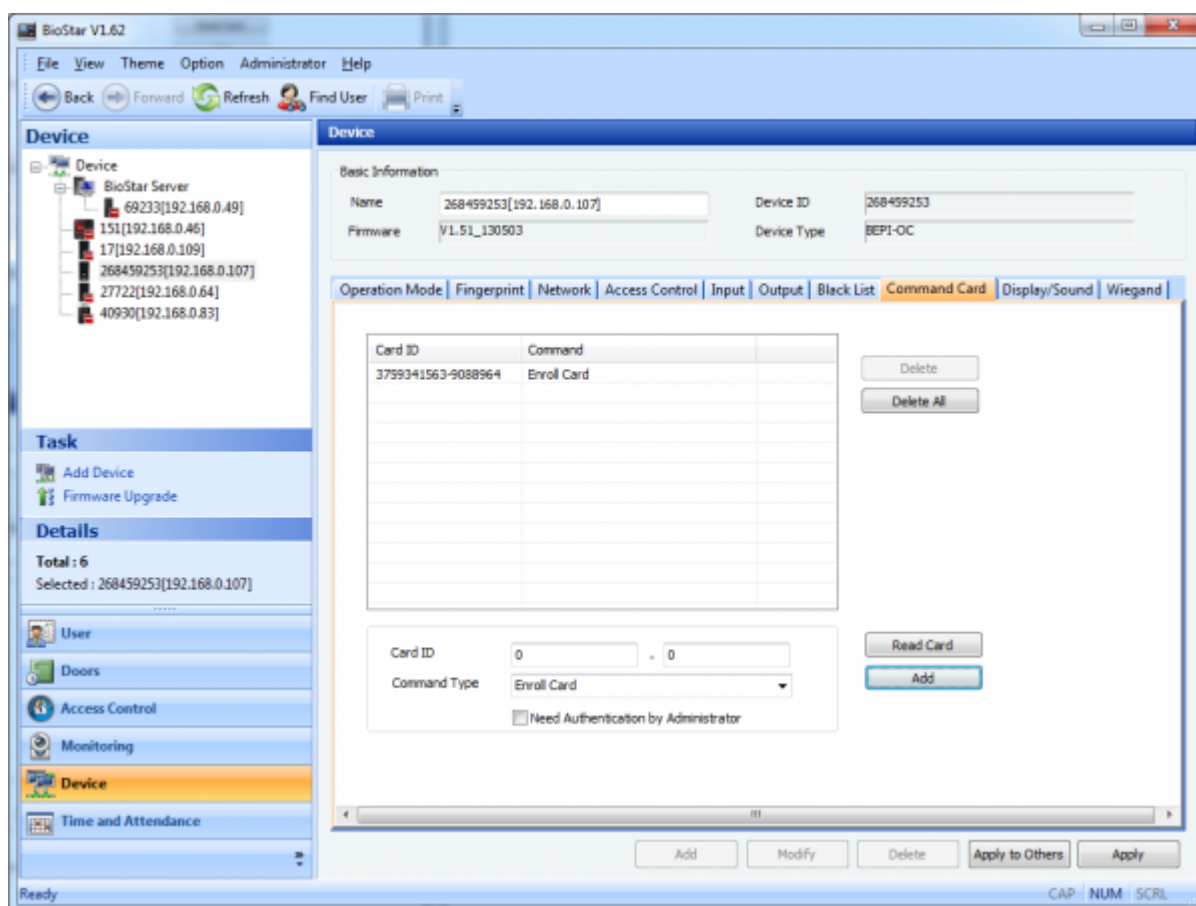
1. Go to the **Command Card** tab on the **Device** page.



2. Click **Read Card** and tap a card on the card reader of the device to read the card number.

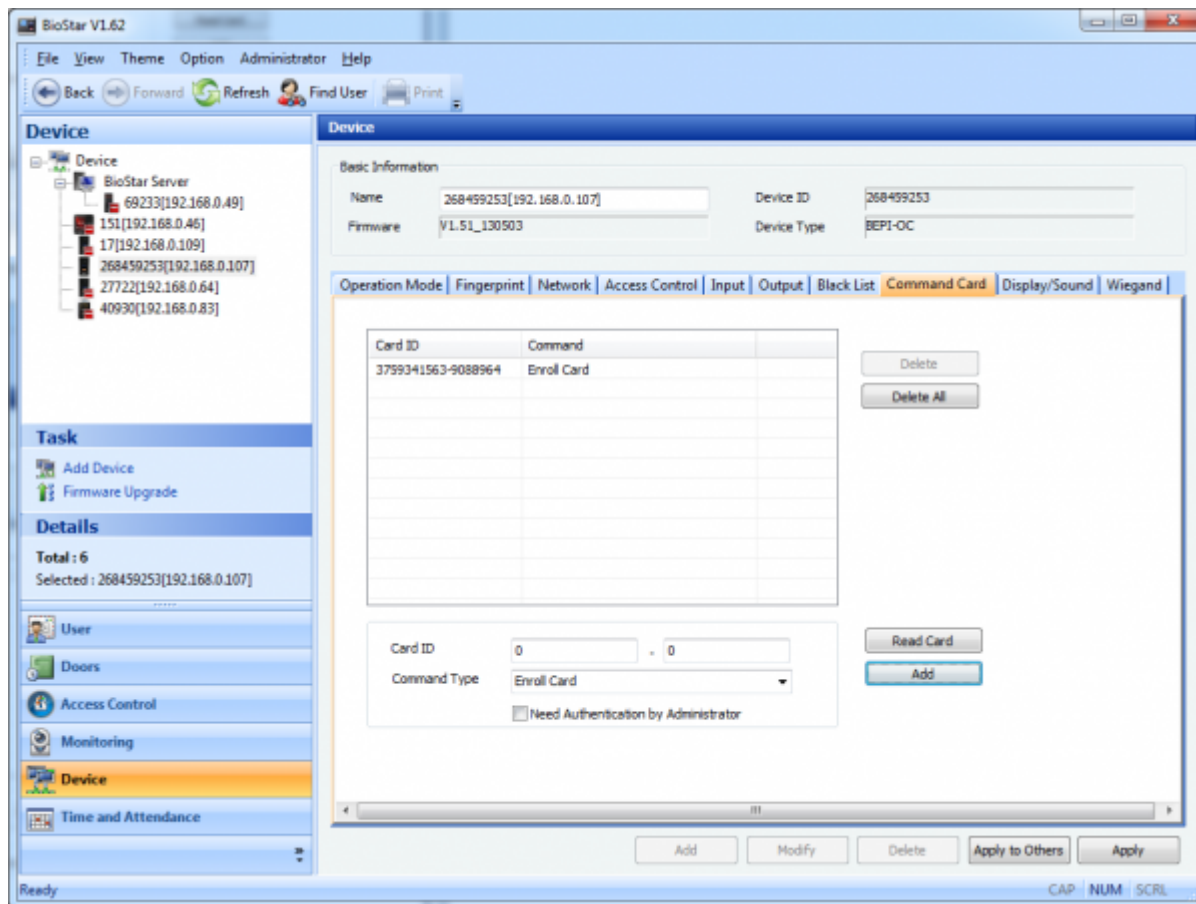


3. Click **Add** and then **Apply**.



## Deleting Command cards

1. Go to the **Command Card** tab on the **Device** page.



2. Select an Enroll Card on the Command Card list (the left pane) and click **Delete** and then **Apply**.

From:

<http://kb.supremainc.com/knowledge/> -

Permanent link:

[http://kb.supremainc.com/knowledge/doku.php?id=en:1xfaq\\_how\\_to\\_register\\_command\\_card](http://kb.supremainc.com/knowledge/doku.php?id=en:1xfaq_how_to_register_command_card)

Last update: **2015/10/12 15:53**