

Table of Contents

How to set up an alarm zone	1
-----------------------------------	---

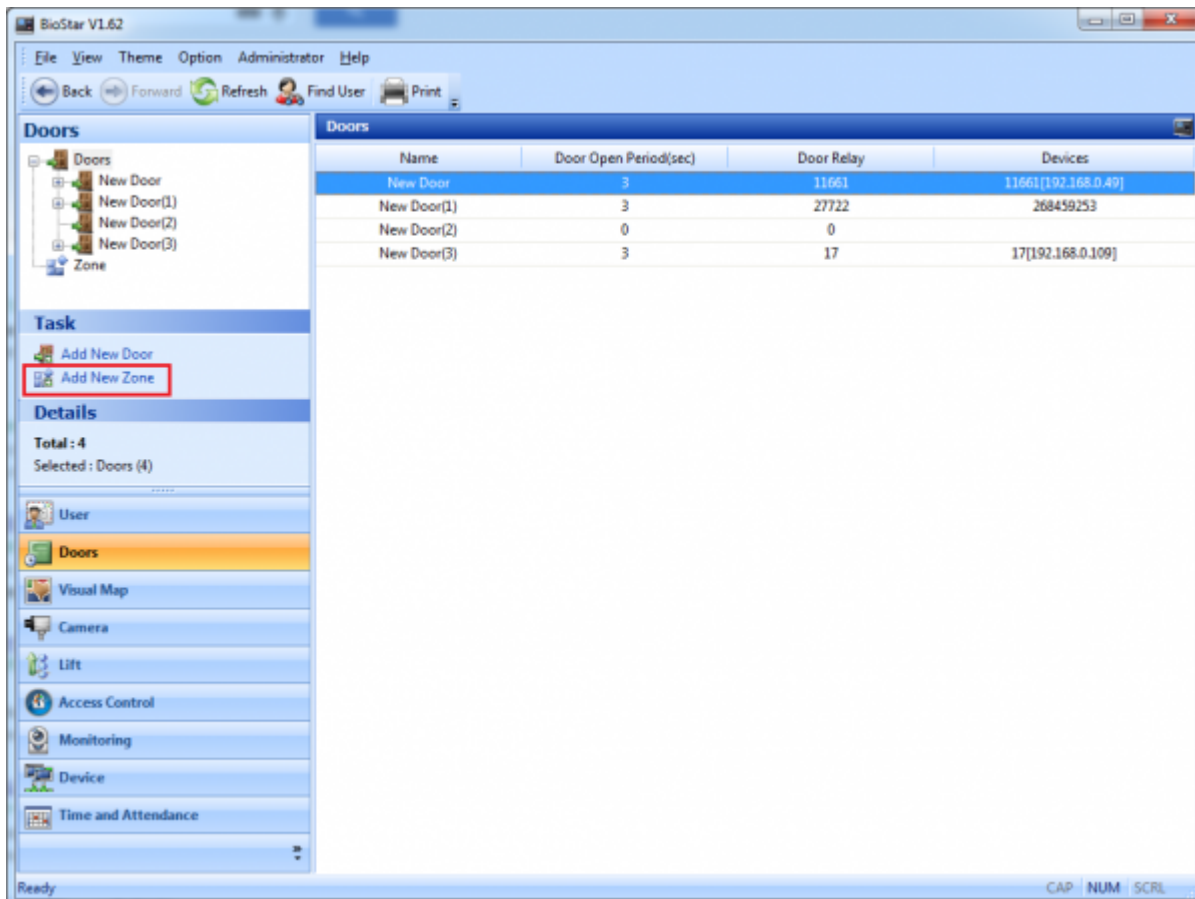
BioStar 1, Alarm, Zone

How to set up an alarm zone

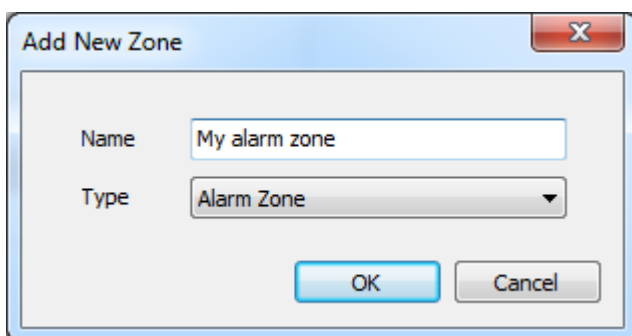
BioStar allows you to set up an alarm zone where you can determine how doors in the zone behave when someone breaks into the zone.

You can set up a fire alarm zone by performing the following steps:

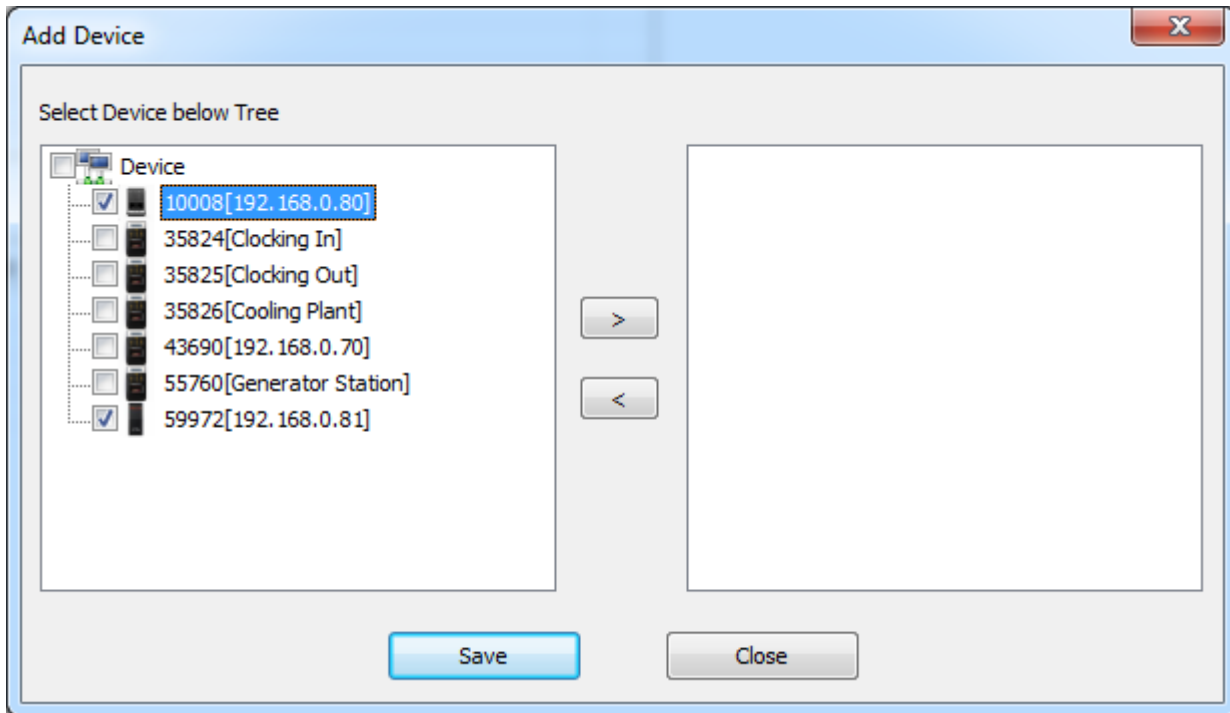
1. On the **Doors** page, click **Add New Zone**.



2. Enter a name for the alarm zone and choose **Alarm Zone** from the **Type** drop-down list.

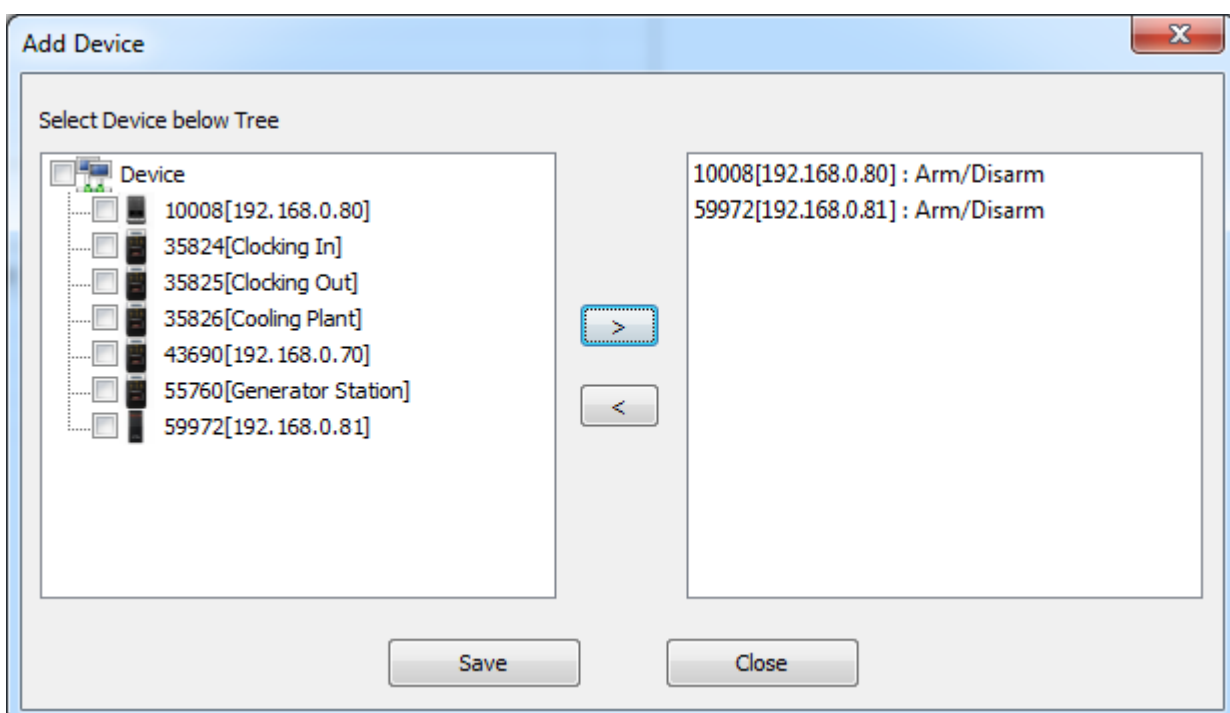
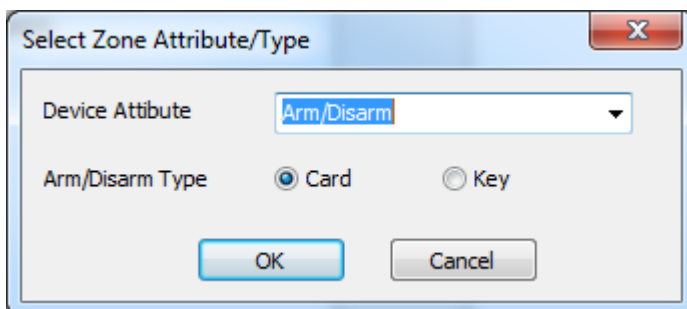


3. Click **Add Device** to add devices to the zone. This brings up the **Add Device** dialog.
4. Choose devices you want to add and click the right arrow button. This brings up the **Select Zone Attribute/Type** dialog.

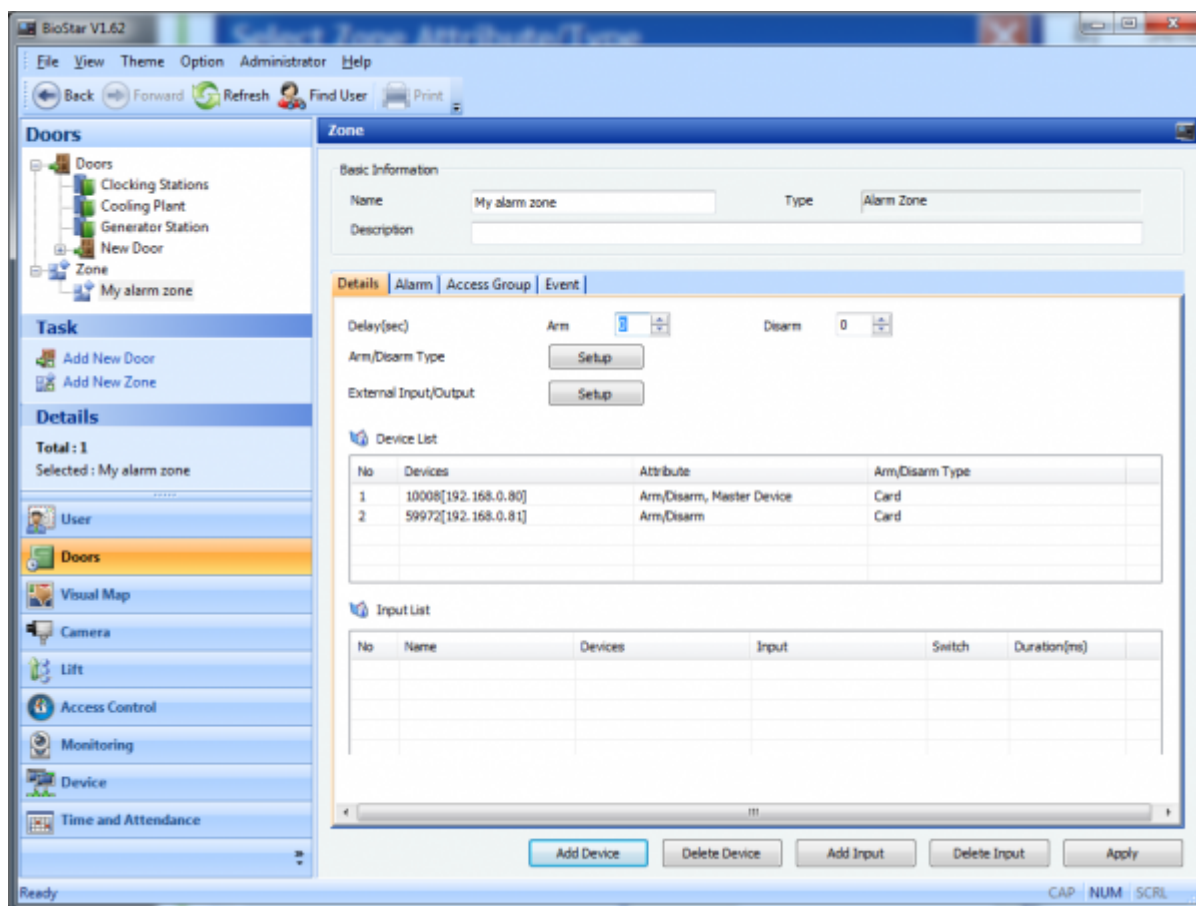


5. Choose from the **Device Attribute** drop-down list and choose **Card** or **Key** for **Arm/Disarm Type**. Then, click **OK** and **Save**.

If you set **Device Attribute** of a device as **Arm/Disarm**, you can arm and disarm the zone using the device.

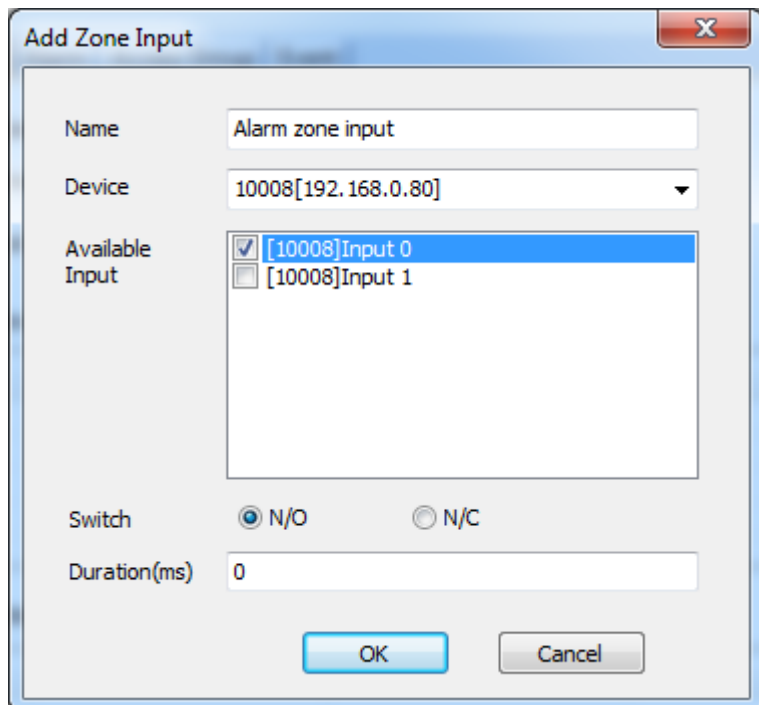


6. Click **Add Input** to determine the input type for the zone.



7. When there is an input signal from the input port specified here while the zone is armed, the alarm sets off.

- **Name:** Type in a name for the input.
- **Device:** Choose a device.
- **Available Input:** Choose an input that you want to receive a signal from.
- **Switch:** Choose a switch type
- **Duration:** the length of an input signal to trigger the alarm



Add Zone Input

Name: Alarm zone input

Device: 10008[192.168.0.80]

Available Input:

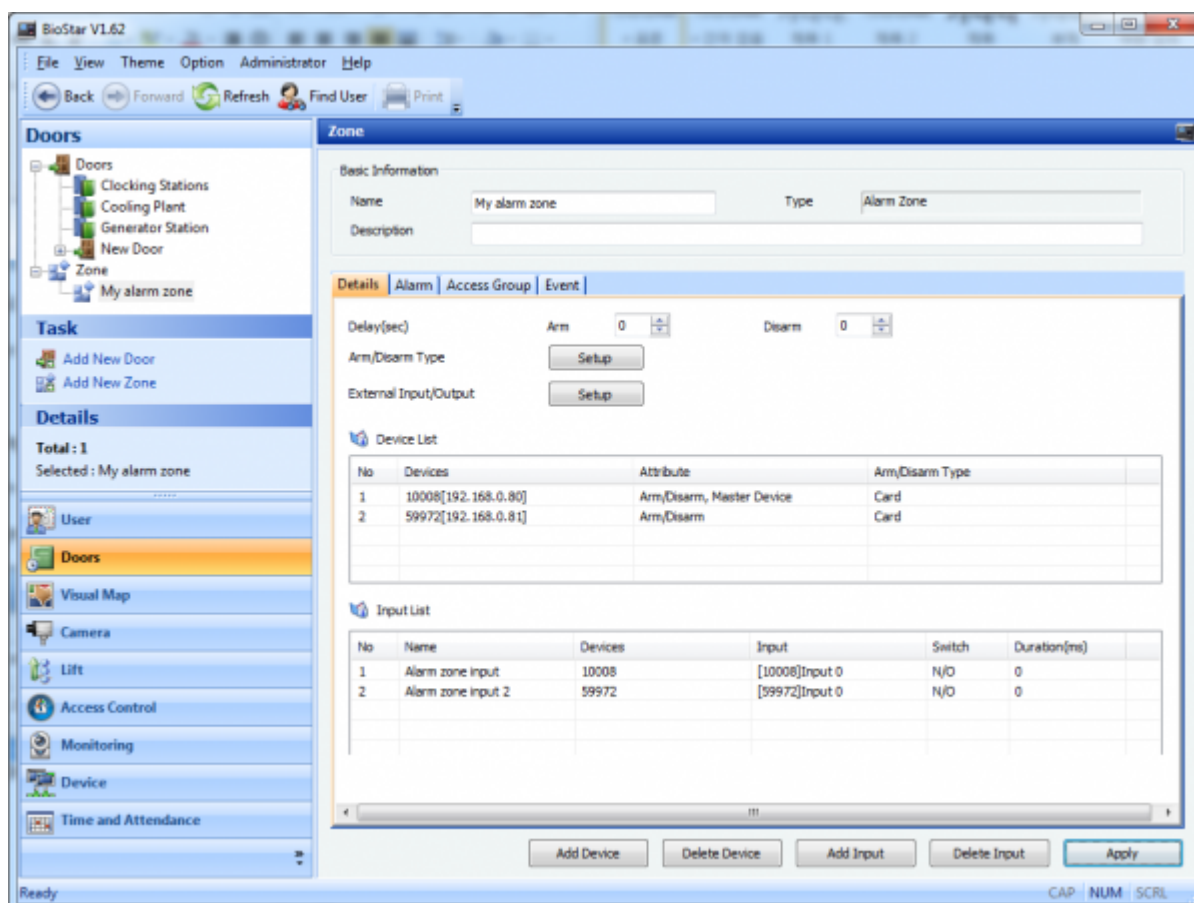
- ☒ [10008]Input 0
- ☐ [10008]Input 1

Switch: ☒ N/O ☐ N/C

Duration(ms): 0

OK Cancel

8. Now it's time to take a look at the settings on the **Details** tab.



BioStar V1.6.2

File View Theme Option Administrator Help

Back Forward Refresh Find User Print

Doors

- Doors
- Clocking Stations
- Cooling Plant
- Generator Station
- New Door
- Zone
- My alarm zone

Task

- Add New Door
- Add New Zone

Details

Total: 1
Selected: My alarm zone

User

- Doors
- Visual Map
- Camera
- Lift
- Access Control
- Monitoring
- Device
- Time and Attendance

Zone

Basic Information

Name: My alarm zone Type: Alarm Zone

Description:

Details Alarm Access Group Event

Delay(sec) Arm: 0 Disarm: 0

Arm/Disarm Type: Setup

External Input/Output: Setup

Device List

No	Devices	Attribute	Arm/Disarm Type
1	10008[192.168.0.80]	Arm/Disarm, Master Device	Card
2	59972[192.168.0.81]	Arm/Disarm	Card

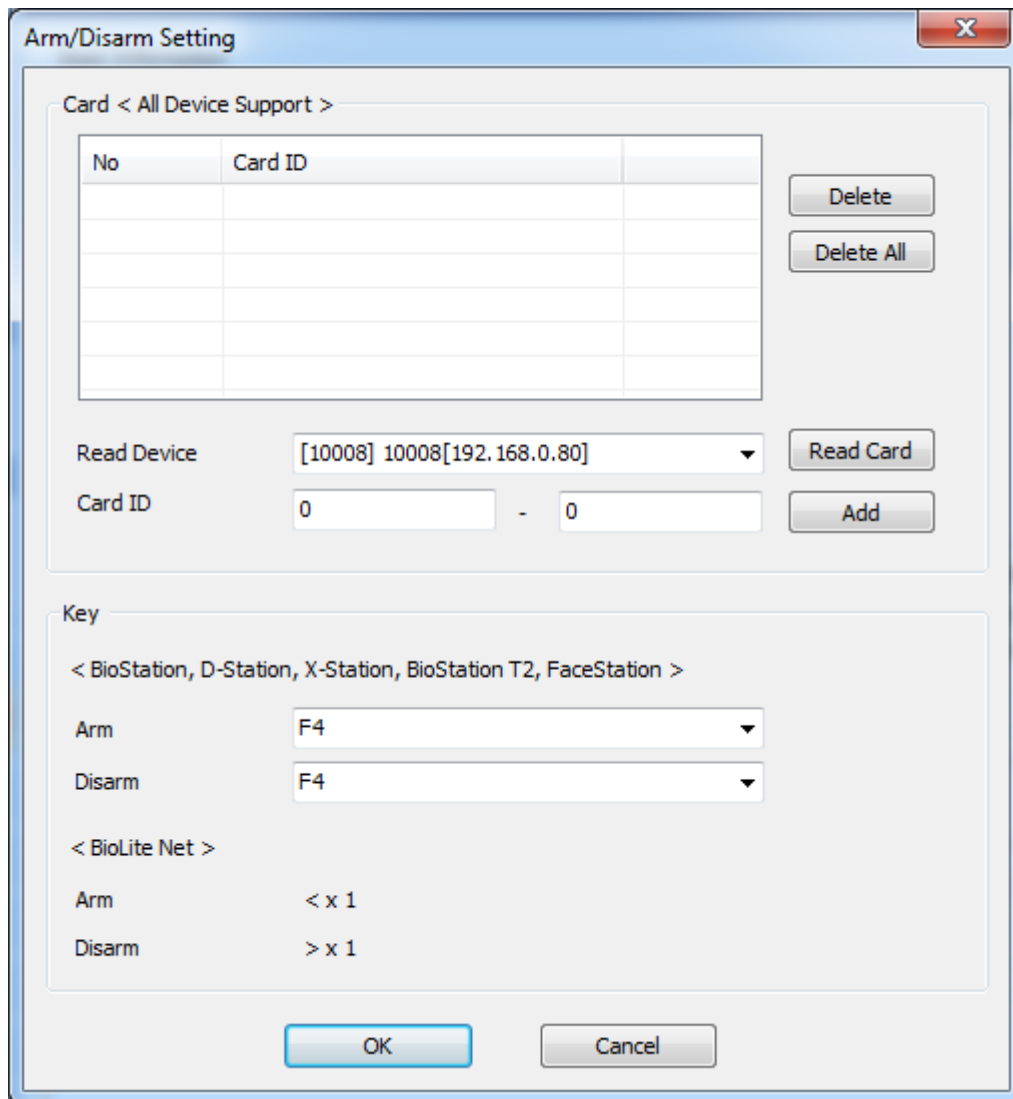
Input List

No	Name	Devices	Input	Switch	Duration(ms)
1	Alarm zone input	10008	[10008]Input 0	N/O	0
2	Alarm zone input 2	59972	[59972]Input 0	N/O	0

Add Device Delete Device Add Input Delete Input Apply

Ready CAP NUM SCRL

9. You can specify how to arm and disarm the zone on the **Arm/Disarm Setting** dialog. Click **Arm/Disarm Type** to bring up the dialog.



The dialog box is titled "Arm/Disarm Setting" and contains two main sections: "Card" and "Key".

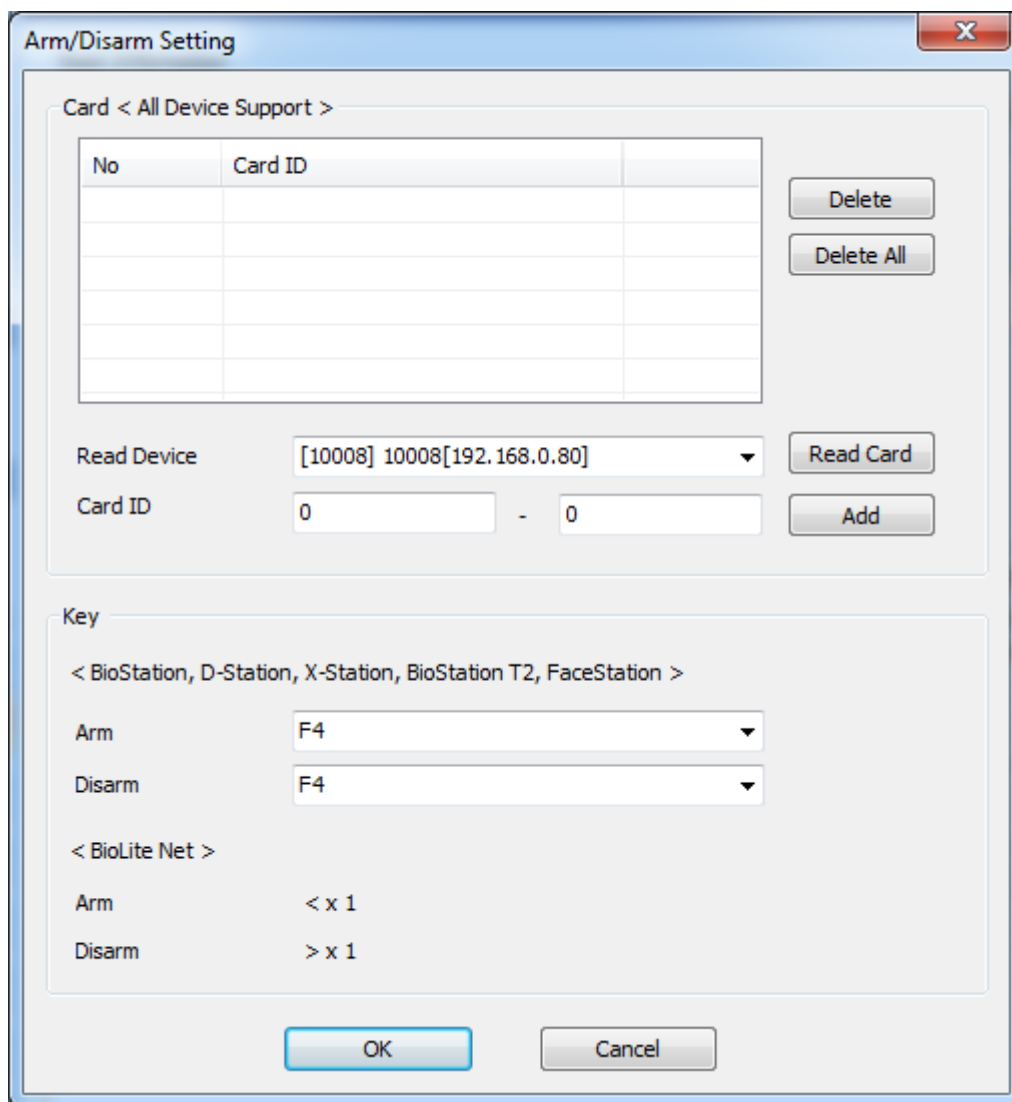
Card Section:

- Header: "Card < All Device Support >"
- Table with 3 columns: "No", "Card ID", and an empty column.
- Buttons: "Delete" and "Delete All" are located to the right of the table.
- Read Device: A dropdown menu showing "[10008] 10008[192.168.0.80]".
- Card ID: Two input fields with "0" and a hyphen between them.
- Buttons: "Read Card" and "Add" are located to the right of the input fields.

Key Section:

- Header: "Key"
- Sub-header: "< BioStation, D-Station, X-Station, BioStation T2, FaceStation >"
- Arm: A dropdown menu showing "F4".
- Disarm: A dropdown menu showing "F4".
- Sub-header: "< BioLite Net >"
- Arm: A text field showing "< x 1".
- Disarm: A text field showing "> x 1".
- Buttons: "OK" and "Cancel" are at the bottom.

- 1) Choose a device on which you read a card from the **Read Device** drop-down list.
- 2) Click **Read Card** to read a card.
- 3) Click **Add** to register the card.



The 'Arm/Disarm Setting' dialog box is shown. It has a title bar with a close button (X). The main content area is divided into two sections: 'Card < All Device Support >' and 'Key'.

Card < All Device Support >

No	Card ID

Buttons: Delete, Delete All

Read Device: [10008] 10008[192.168.0.80] (dropdown) Read Card

Card ID: 0 - 0 Add

Key

< BioStation, D-Station, X-Station, BioStation T2, FaceStation >

Arm: F4 (dropdown)
Disarm: F4 (dropdown)

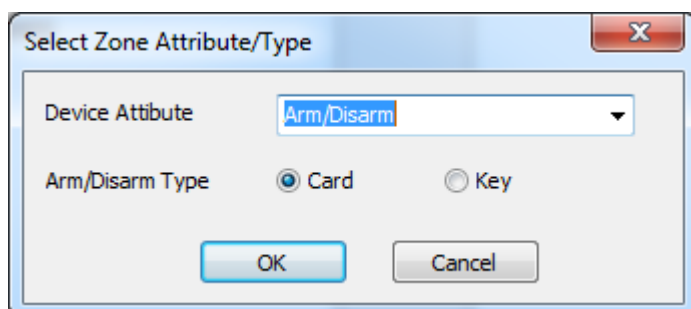
< BioLite Net >

Arm: < x 1
Disarm: > x 1

Buttons: OK, Cancel

4) When we add the devices to this zone, we have chosen **Card** for the method to arm and disarm the zone, so the settings in the **Key** section on the dialog is not applied to this zone.

If you have chosen **Key** for the **Arm/Disarm Type** option in step 5, you can arm and disarm the zone using the function keys of the device specified here.



The 'Select Zone Attribute/Type' dialog box is shown. It has a title bar with a close button (X).

Device Attribute: Arm/Disarm (dropdown)

Arm/Disarm Type: ☒ Card ☐ Key

Buttons: OK, Cancel

10. Click **Apply** to transfer the settings to the devices.

Arm/Disarm Setting

Card < All Device Support >

No	Card ID
1	000-3829098359

Delete
Delete All

Read Device [10008] 10008[192.168.0.80] Read Card

Card ID 0 - 3829098359 Add

Key

< BioStation, D-Station, X-Station, BioStation T2, FaceStation >

Arm F4

Disarm F4

< BioLite Net >

Arm < x 1

Disarm > x 1

OK Cancel

From:
<http://kb.supremainc.com/knowledge/> -

Permanent link:
http://kb.supremainc.com/knowledge/doku.php?id=en:1xfaq_how_to_set_up_an_alarm_zone

Last update: **2016/01/05 09:44**