

## Table of Contents

How to update an existing MS SQL database using DBSetup .....	1
---	---

BioStar 1, MSSQL, Database

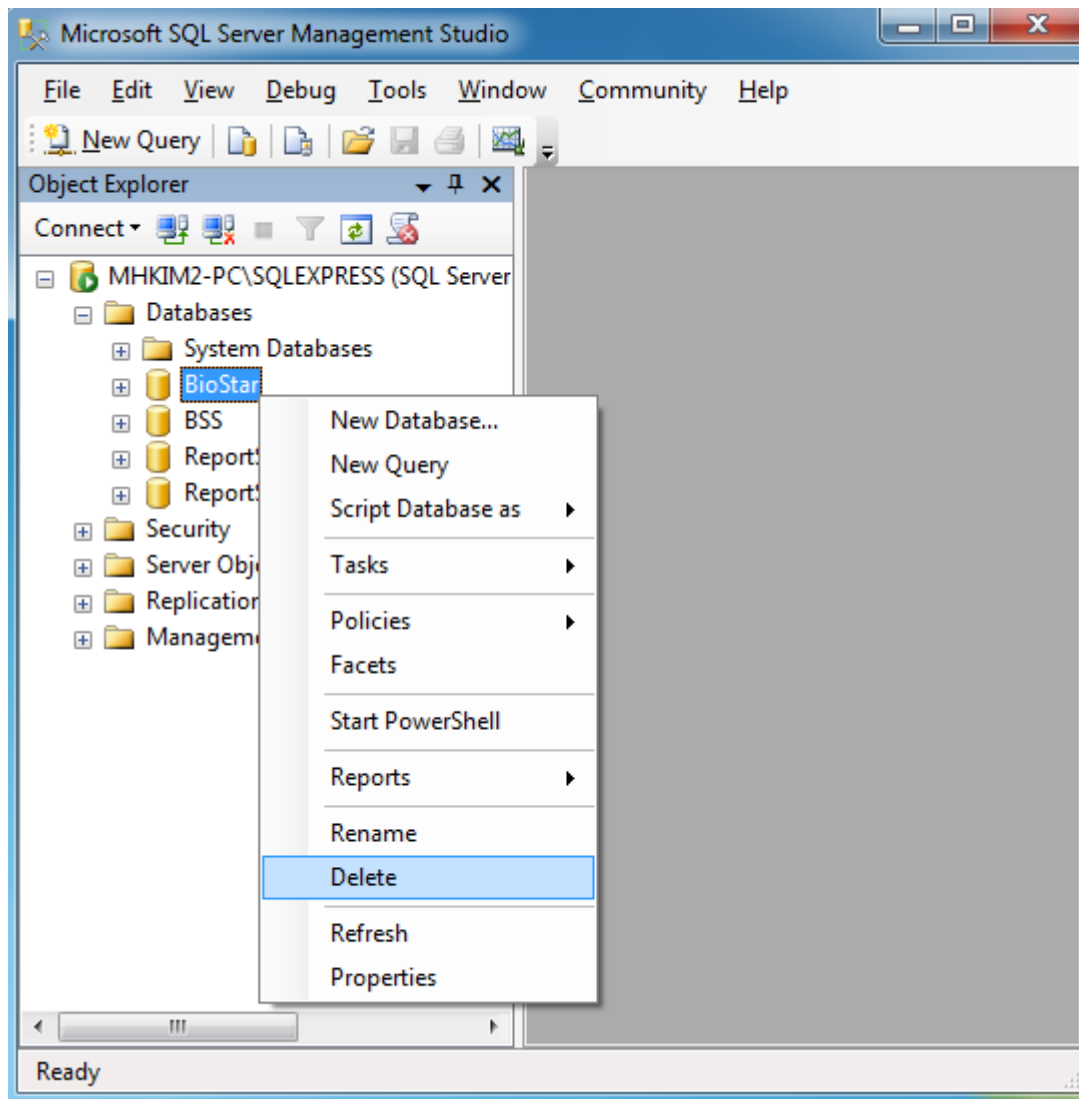
## How to update an existing MS SQL database using DBSetup

This document explains how to update an existing MS SQL database using DBSetup. When you install a later version of BioStar, the existing database is automatically updated. The installation adds and alters tables. In this case, you don't need to be worried about the database update. However, if you have a database backup generated with an older version of BioStar and want to install BioStar on a new operating system, you should update the existing database on your own. For example, let's say that you have been using BioStar 1.1 on Windows XP and wants to upgrade the operating system to Windows 7 with BioStar 1.7. Then, what should you do?

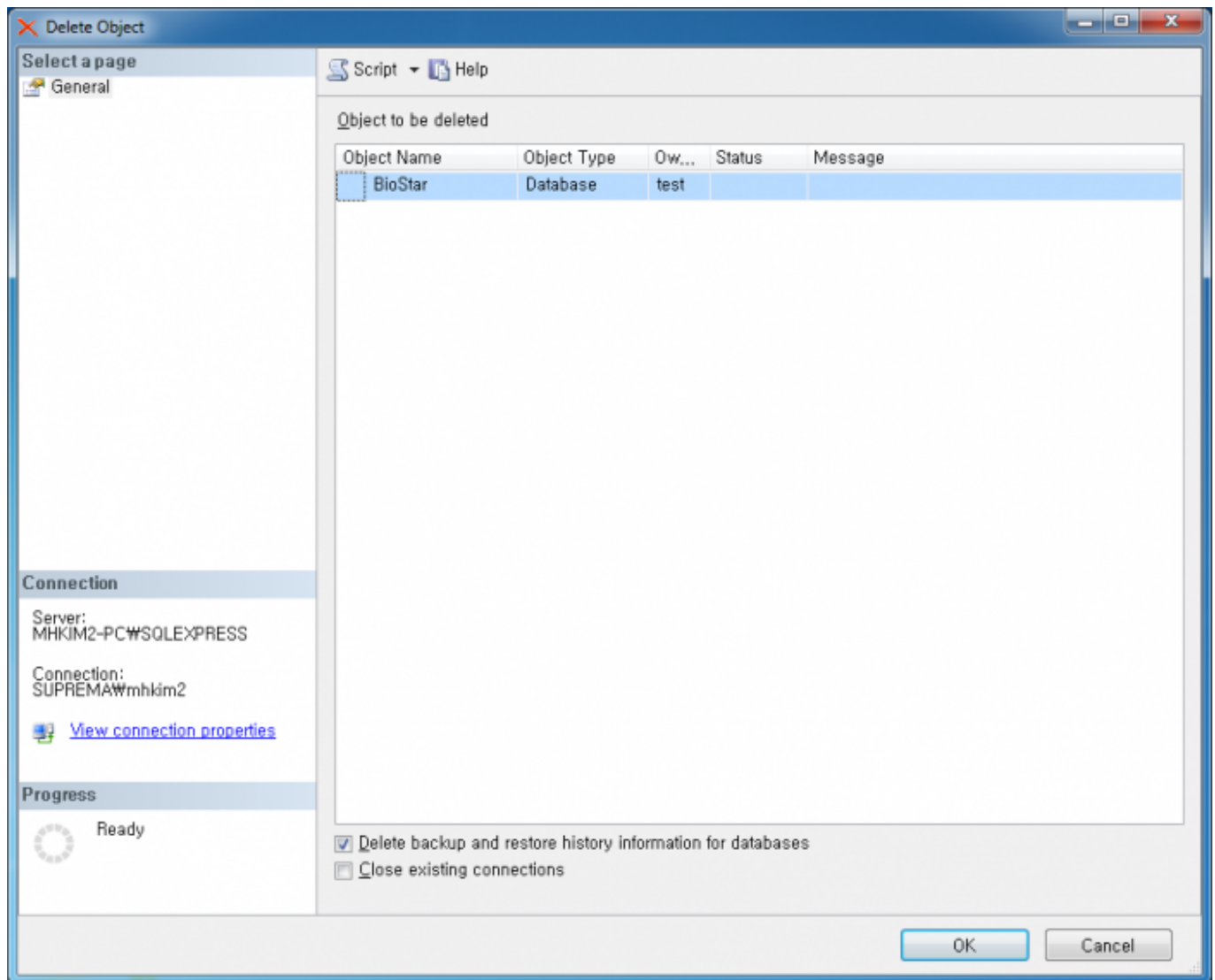
First and foremost, you must back up the BioStar database before installing a later version of the operating system (e.g. Windows 7). You can make a backup of your database using MS SQL Management Studio. Refer to the technical document on how to make a backup of your MS SQL database.

Since you have newly installed the operating system, there is no existing BioStar. So, the first thing you need to do is installing BioStar. You can't upgrade the BioStar 1.1 database to 1.7 at one go. You need to upgrade it to BioStar 1.3 and then to BioStar 1.7. So, install BioStar 1.3. Then, delete the BioStar database created during the installation, as shown in the figure below:

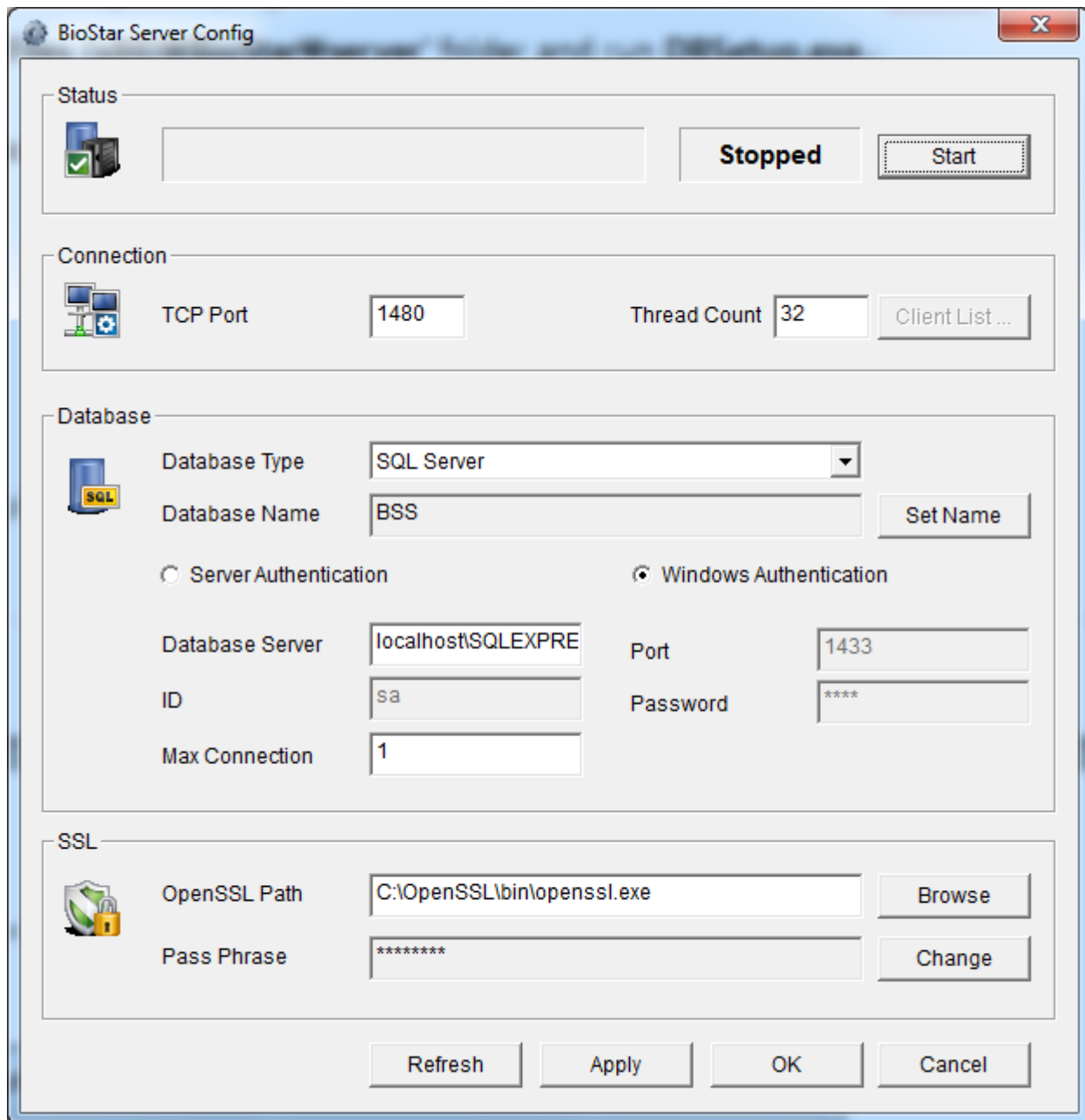
1. Run **Microsoft SQL Server Management Studio**.
2. Expand the **Databases** item, right-click the **BioStar** database and choose **Delete**.



3. Click **OK** to delete the database.



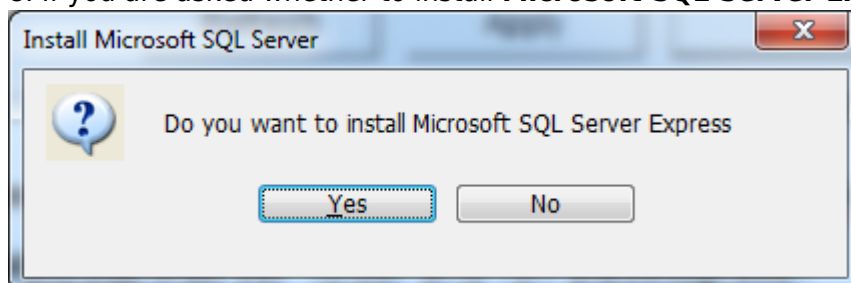
4. Restore the backup of BioStar database you created before installing the operating system. Refer to the document on how to restore a MS SQL database.
5. Before running the **DBSetup.exe** program, run **BioStar Server Config**.
6. Stop the server.



The BioStar Server Config window is divided into four main sections: Status, Connection, Database, and SSL. The Status section shows a server icon with a green checkmark, a text box, and buttons for 'Stopped' and 'Start'. The Connection section includes a TCP Port field set to 1480, a Thread Count field set to 32, and a 'Client List...' button. The Database section features a 'Database Type' dropdown menu set to 'SQL Server', a 'Database Name' field set to 'BSS' with a 'Set Name' button, and two authentication options: 'Server Authentication' (unselected) and 'Windows Authentication' (selected). Below these are fields for 'Database Server' (localhost\SQLEXPRESS), 'Port' (1433), 'ID' (sa), 'Password' (masked with \*\*\*\*), and 'Max Connection' (1). The SSL section has an 'OpenSSL Path' field set to 'C:\OpenSSL\bin\openssl.exe' with a 'Browse' button, and a 'Pass Phrase' field (masked with \*\*\*\*\*) with a 'Change' button. At the bottom are 'Refresh', 'Apply', 'OK', and 'Cancel' buttons.

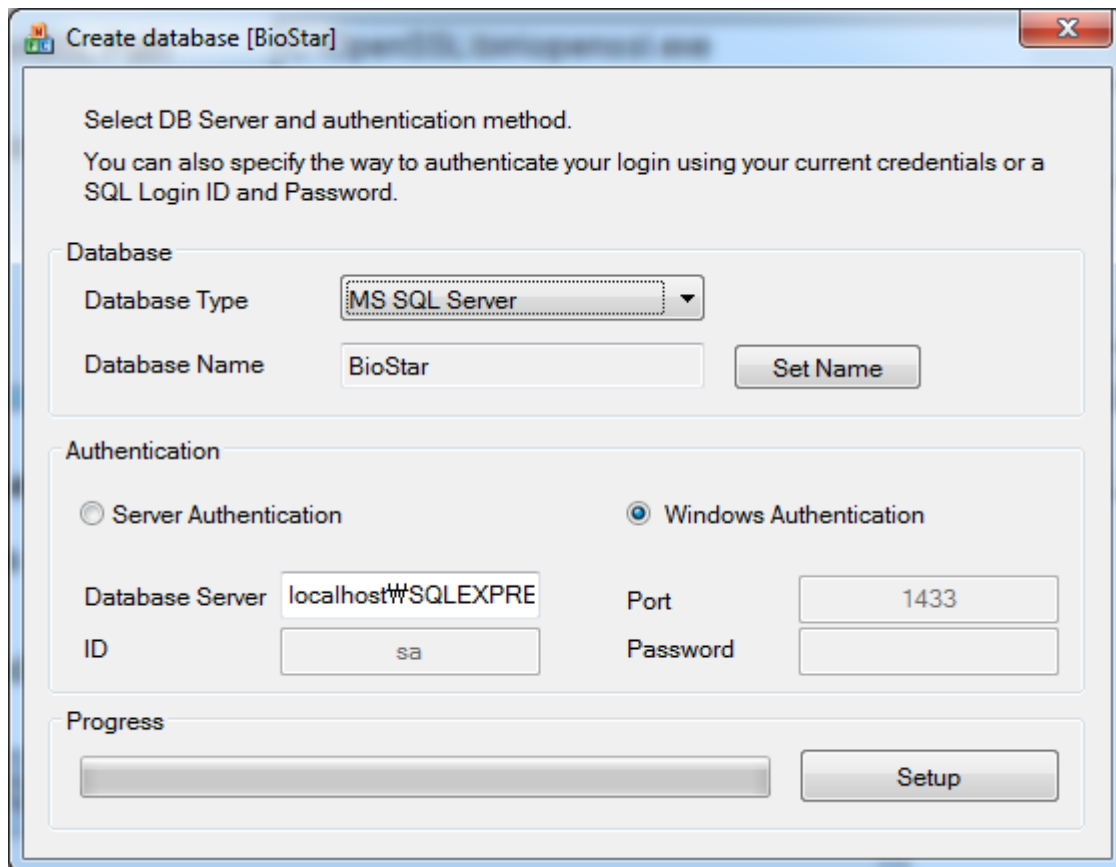
7. Run the **DBSetup.exe** program included in the server folder of BioStar 1.3. Go to the **C:\Program Files (x86)\BioStar\server** folder and run **DBSetup.exe**.

8. If you are asked whether to install **Microsoft SQL Server Express**, click **No**.



The 'Install Microsoft SQL Server' dialog box contains a question mark icon and the text 'Do you want to install Microsoft SQL Server Express'. It has two buttons: 'Yes' and 'No'.

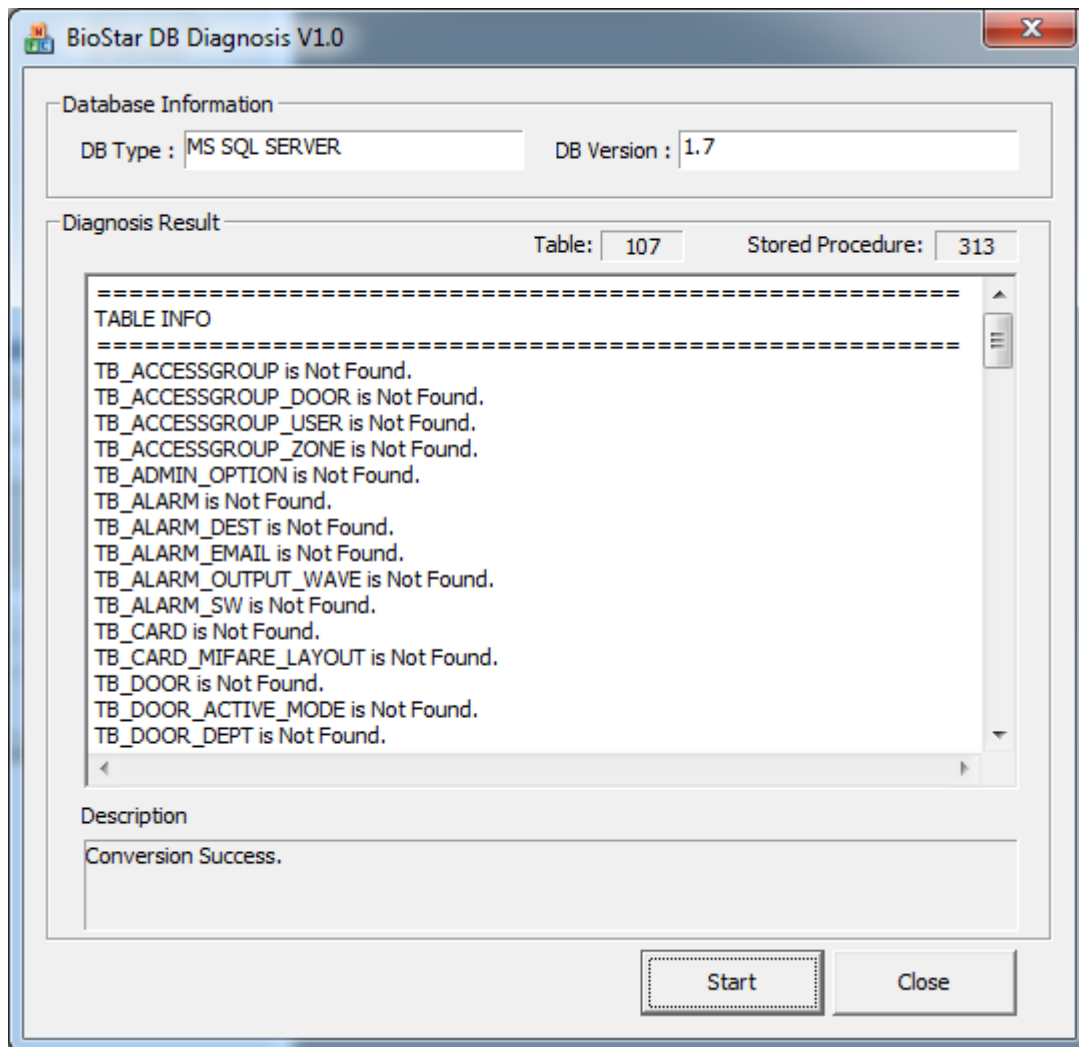
9. Choose **MS SQL Server** from the **Database Type** drop-down list. Check if other options are correct and click **Setup**. The backup database will be automatically updated to 1.3.



10. Install BioStar 1.7 and the database will be automatically updated.

11. If BioStar 1.7 Server does not properly start (make sure that the BioStar Server Config settings are correct), run the **BioStarDBDiag.exe** program. You can find it in the **C:\Program Files (x86)\BioStar\server** folder.

12. Run **BioStarDBDiag.exe** and send us the result.



From:  
<http://kb.supremainc.com/knowledge/> -

Permanent link:  
[http://kb.supremainc.com/knowledge/doku.php?id=en:1xfag\\_how\\_to\\_update\\_an\\_existing\\_ms\\_sql\\_database\\_using\\_dbsetup&rev=1445320700](http://kb.supremainc.com/knowledge/doku.php?id=en:1xfag_how_to_update_an_existing_ms_sql_database_using_dbsetup&rev=1445320700)

Last update: 2015/10/20 14:58