

## Table of Contents

How to use an external Wiegand reader .....	1
Using an external Wiegand reader as Legacy .....	1
Using an external Wiegand reader as Extended .....	2

[BioStar 1, Wiegand](#)

## How to use an external Wiegand reader

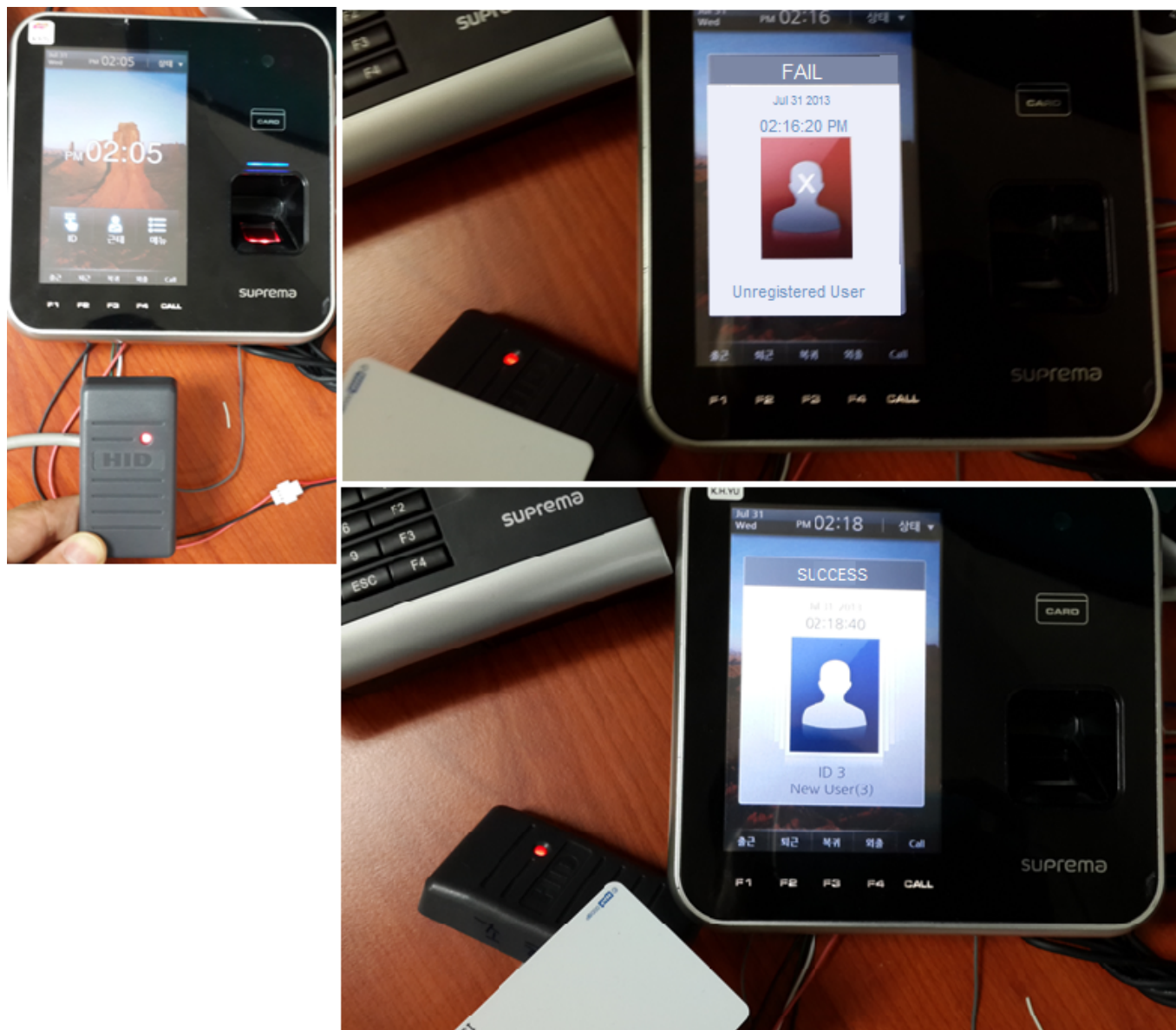
You can connect 3rd party Wiegand readers to Suprema devices. You can find a Wiegand port on the back of the devices. When you use an external Wiegand reader, you should add the reader as an RF device on BioStar.

There are two connection modes for an external Wiegand reader: **Legacy** and **Extended**. If you connect an external Wiegand reader as **Legacy**, you don't need to explicitly add the reader. For example, if you've connected a HID Wiegand card reader to a BioStation, the Wiegand reader will automatically transfer a card ID to the BioStation when you tap a HID card on the Wiegand reader.

On the other hand, if you connect an external Wiegand reader as **Extended**, you should add the reader explicitly to BioStar. The Wiegand reader in the **Extended** mode works as if it is a slave device. It has its own ID, so you can tell from which device a log record has come.

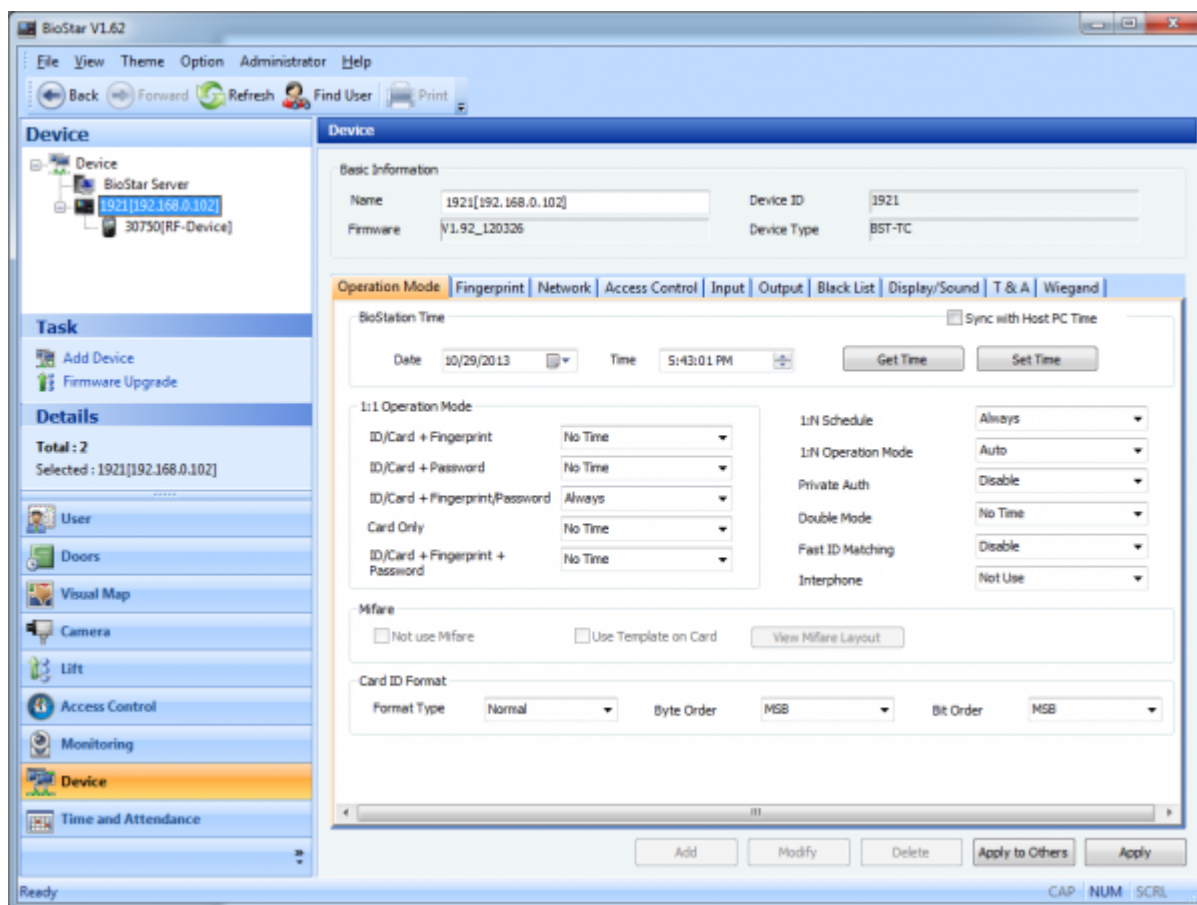
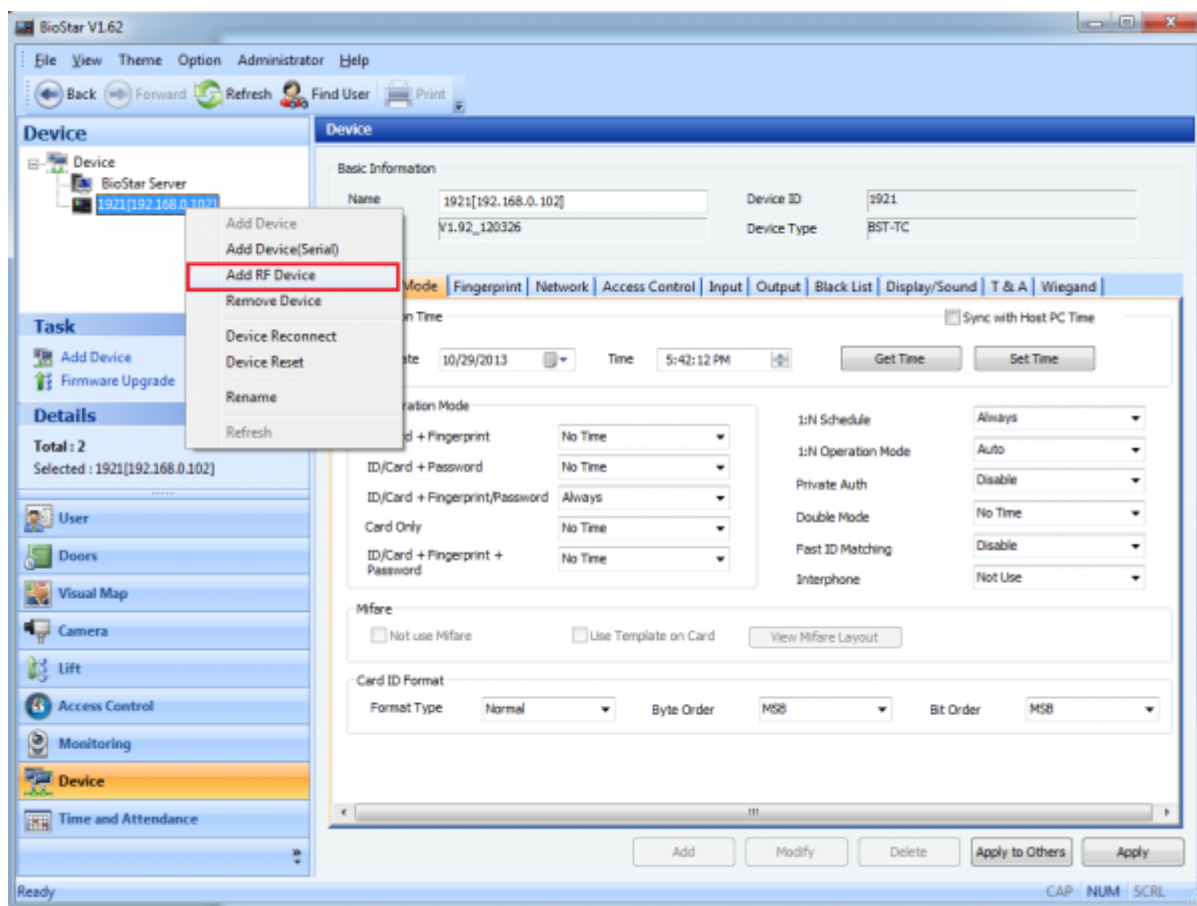
### Using an external Wiegand reader as Legacy

1. On the **Wiegand** tab of the **Device** page, set **Wiegand Mode** to **Legacy** and click **Apply**.
2. On the **Operation Mode** tab of the **Device** page, set **Format Type** to **Wiegand** and click **Apply**.
3. When you tap a card on the Wiegand reader, you will see a result message on your Suprema device.

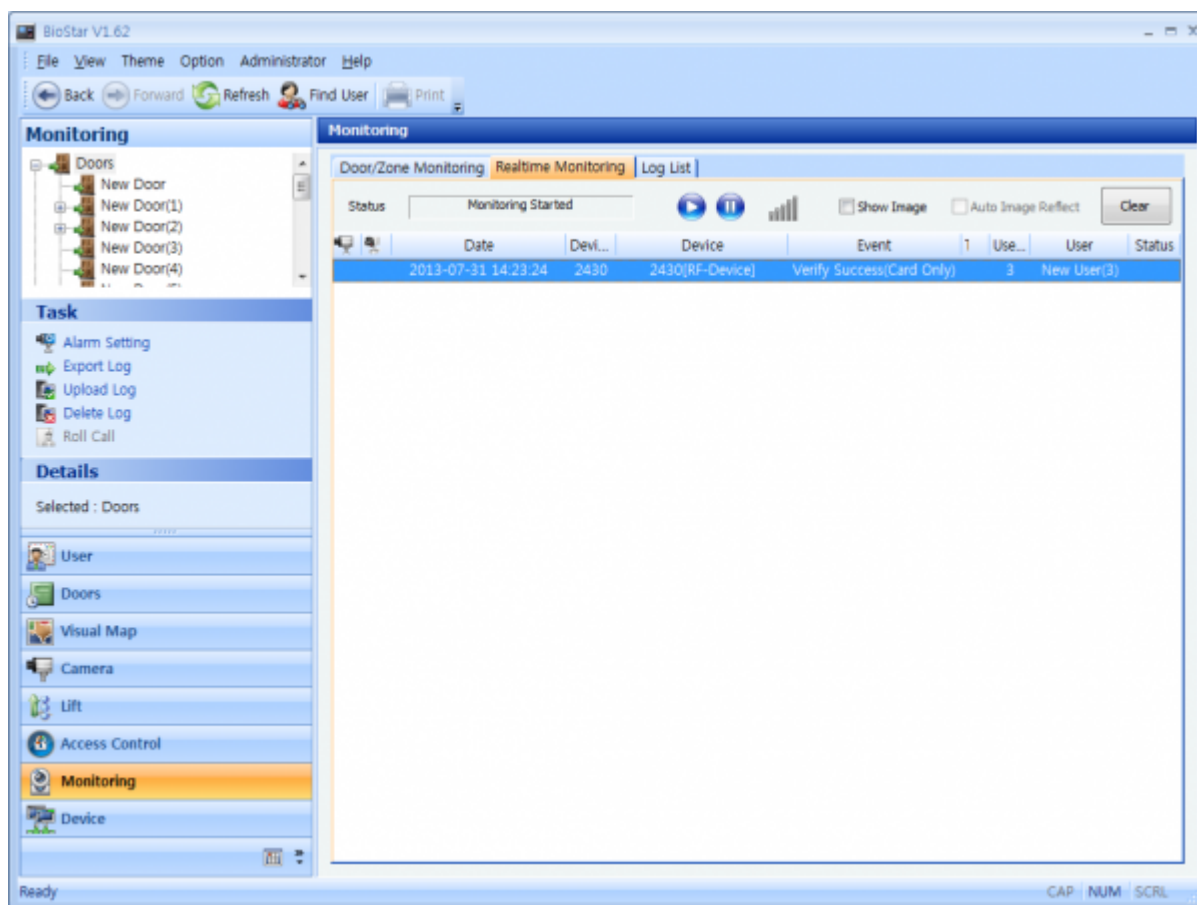
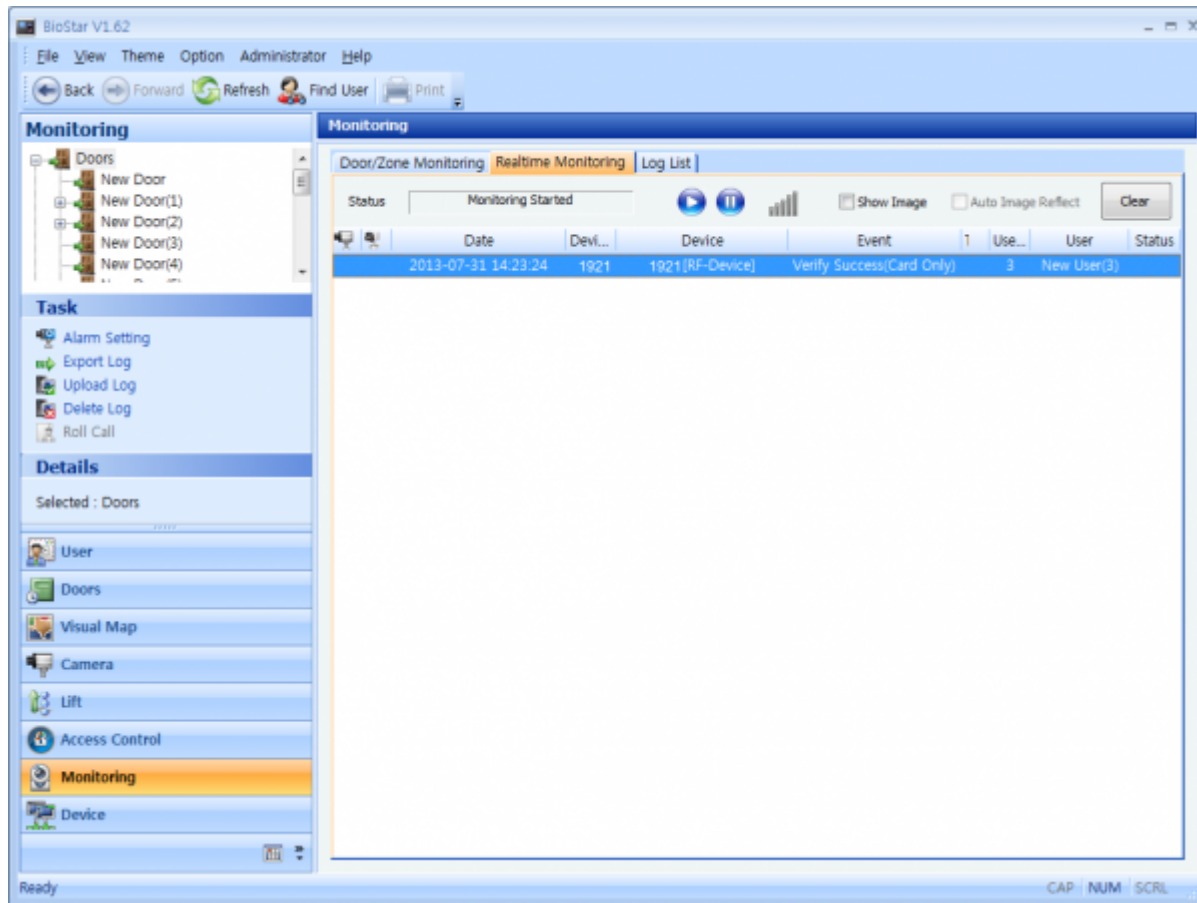


## Using an external Wiegand reader as Extended

1. On the **Wiegand** tab of the **Device** page, set **Wiegand Mode** to **Extended** and click **Apply**.
2. On the **Operation Mode** tab of the **Device** page, set **Format Type** to **Wiegand** and click **Apply**.
3. After connecting a Wiegand reader to your device, right-click your device in the **Device** pane and choose **Add RF Device**.



4. When you tap a card on the Wiegand reader, you can see a log coming from the Wiegand reader.



From:

<http://kb.supremainc.com/knowledge/> -

Permanent link:

[http://kb.supremainc.com/knowledge/doku.php?id=en:1xfaq\\_how\\_to\\_use\\_an\\_external\\_wiegand\\_reader](http://kb.supremainc.com/knowledge/doku.php?id=en:1xfaq_how_to_use_an_external_wiegand_reader)

Last update: **2019/12/31 14:04**