

# Table of Contents

Migrating domain settings when reinstalling BioStar 2 .....	1
Procedure .....	1

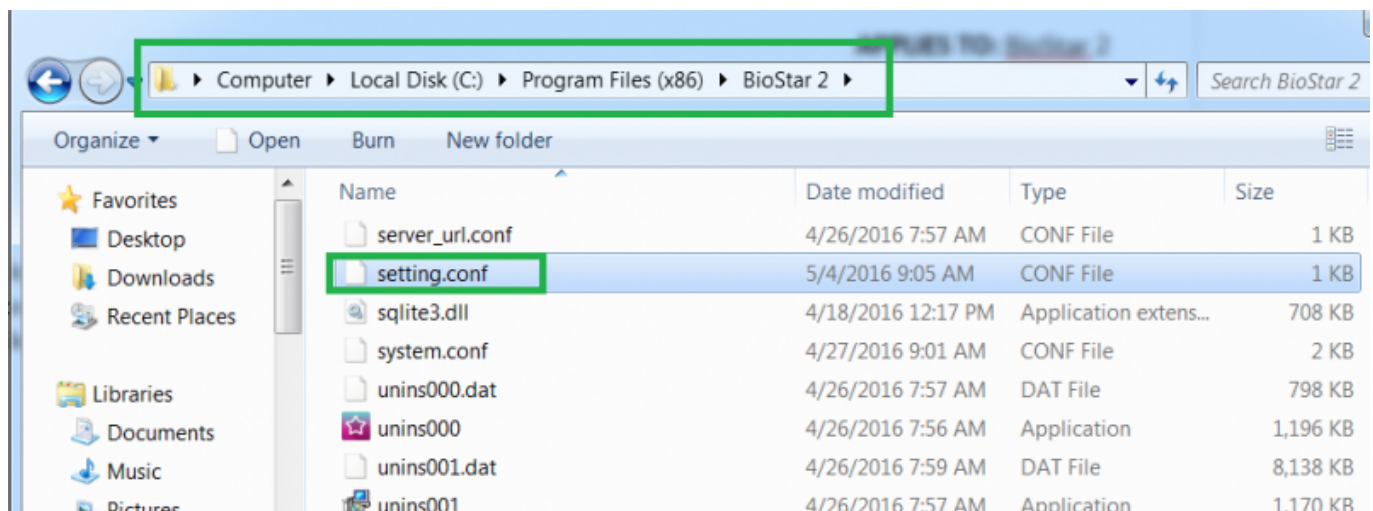
[BioStar 2, FAQ](#)

## Migrating domain settings when reinstalling BioStar 2

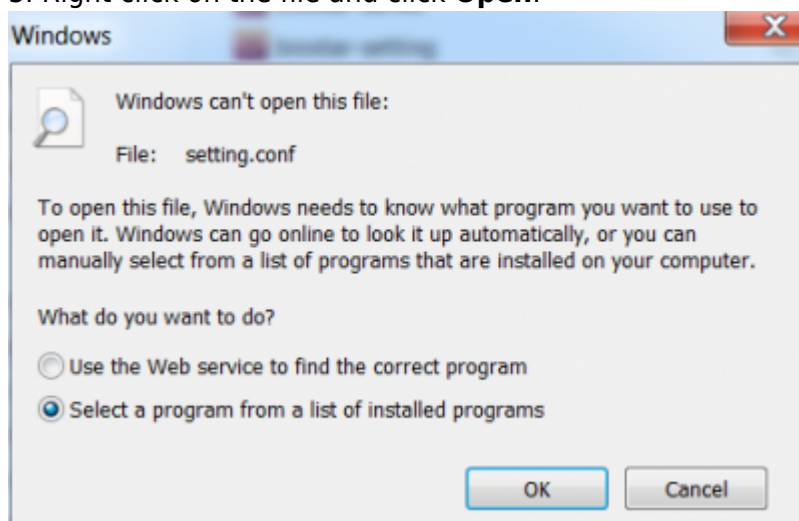
If you uninstall BioStar 2 and reinstall it after you have to use the cloud setting in BioStar 2, you will not be able to use the same subdomain name. However, if you back up the setting.conf file and overwrite the file in your new installation, you should be able to reuse the subdomain name.

### Procedure

1. Open File Explorer in Windows.
2. Go to the BioStar2 Installation folder as shown below and find the file: **setting.conf**
  - In case of installed BioStar 2 for 32bit: C:\Program Files (x86)\BioStar 2
  - In case of installed BioStar 2 for 64bit: C:\Program Files\BioStar 2\BioStar 2(x64)



3. Right click on the file and click **Open**.



4. Select Select a program form a list of installed programs and click **OK**.
5. Choose Notepad (or any other text related software) and click **OK**.

6. Copy the cloud related information shown below and save it in another notepad file to be safe.



```
{
  "BioStar":
  {
    "tna":
    {
      "use_tna": "true",
      "http_port": "3000",
      "https_port": "3002",
      "ngrok_port": "51000"
    },
    "https":
    {
      "ssl_addr": "192.168.16.19",
      "use_ssl": "0"
    },
    "cloud":
    {
      "use_cloud": "1",
      "server_address": "api.biostar2.com",
      "http_port": "52000",
      "version": "v1",
      "sub_domain": "ethan",
      "email": "ethan@suprema.co.kr",
      "account_id": "5717390cb1d04fc17d1b6668"
    },
    "http":
    {
      "port": "81"
    }
  }
}
```

7. Uninstall BioStar 2.

8. Reinstall BioStar 2.

9. Open the new **setting.conf** file at the same location as before.

10. Paste the copied information within the `cloud {}` and save.

11. Go to **BioStar 2 > Setting > Cloud**. You should be able to use the same sub-domain name you used before.

- If you have already deleted BioStar2 without backing up the **setting.conf** file, please contact the technical support team.
- Note: if you are an end-user or dealer, please contact your local Suprema distributor for technical support.

From:  
<https://kb.supremainc.com/knowledge/> -

Permanent link:  
[https://kb.supremainc.com/knowledge/doku.php?id=en:2xfaq\\_how\\_to\\_backup\\_the\\_cloud\\_setting\\_when\\_reinstalling\\_biostar\\_2](https://kb.supremainc.com/knowledge/doku.php?id=en:2xfaq_how_to_backup_the_cloud_setting_when_reinstalling_biostar_2)

Last update: **2020/01/02 15:45**