

Table of Contents

How to change from HTTP to HTTPS	1
Can we use HTTPS for BioStar 2?	1
To enable HTTPS protocol	1

[BioStar 2](#), [HTTPS](#)

How to change from HTTP to HTTPS

Can we use HTTPS for BioStar 2?

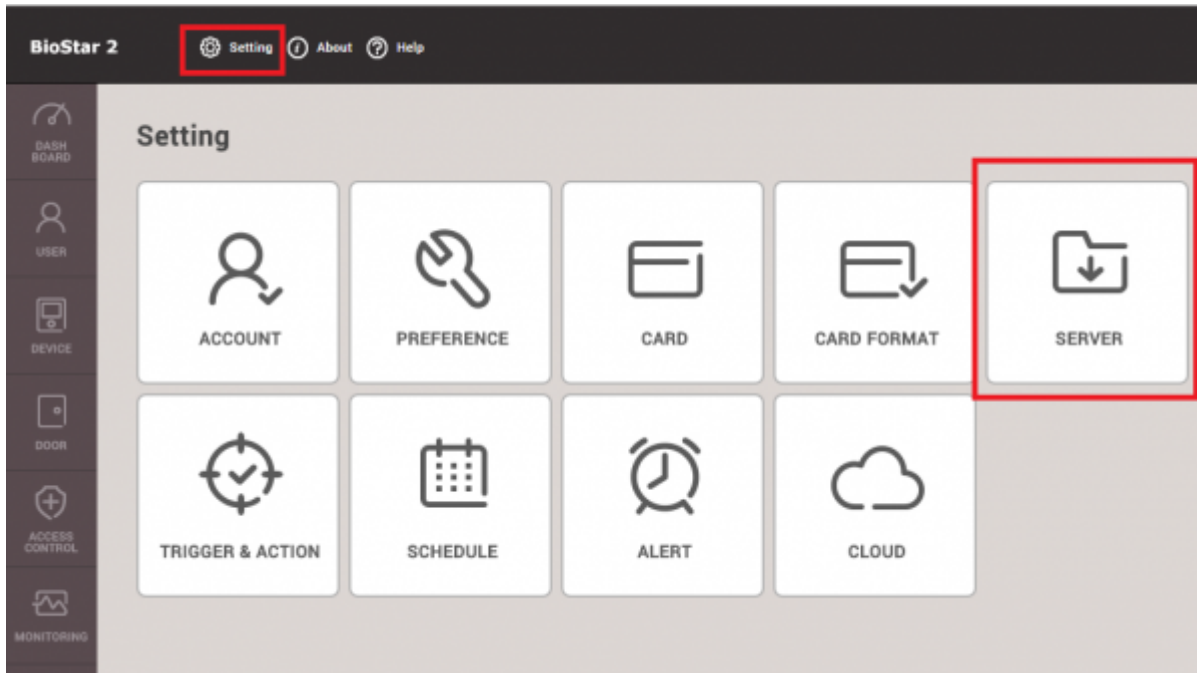
Yes, the BioStar 2 support secure communication protocol called HTTPS between the BioStar 2 Server and the BioStar 2 Clients. HTTPS consists of communication over HTTP with encryption of Secure Socket Layer. This will provide protection of the privacy and the integrity of the data exchanged between the BioStar 2 Server and the BioStar 2 Clients.

To enable HTTPS protocol

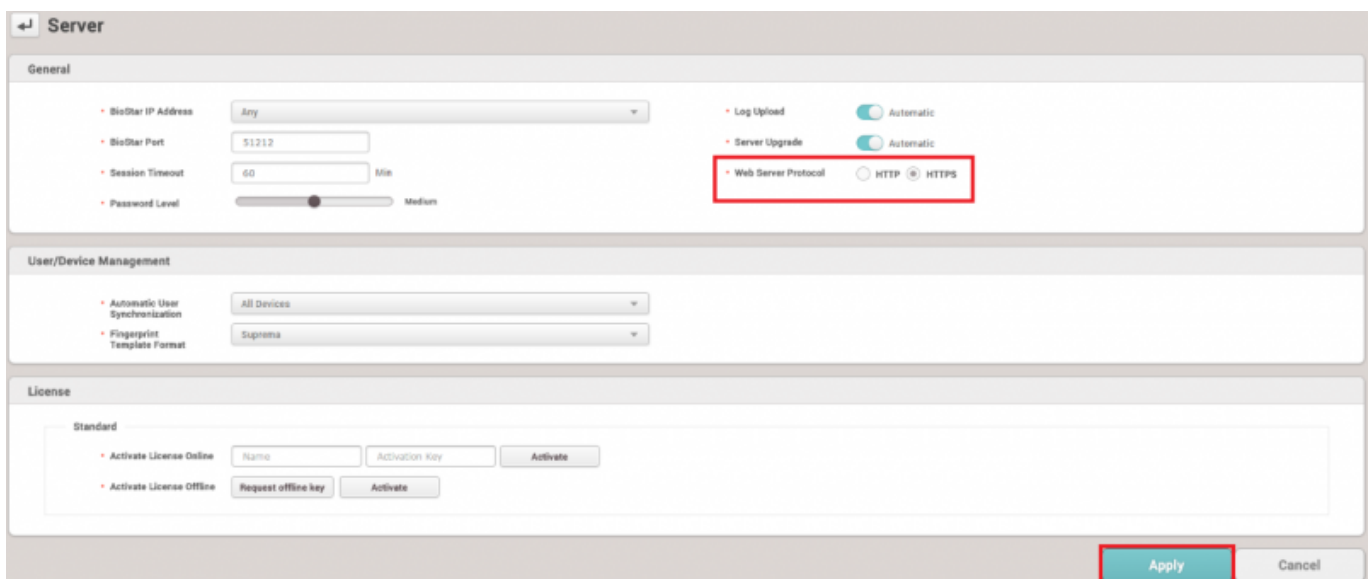
1. Login the BioStar 2 as an Administrator account.



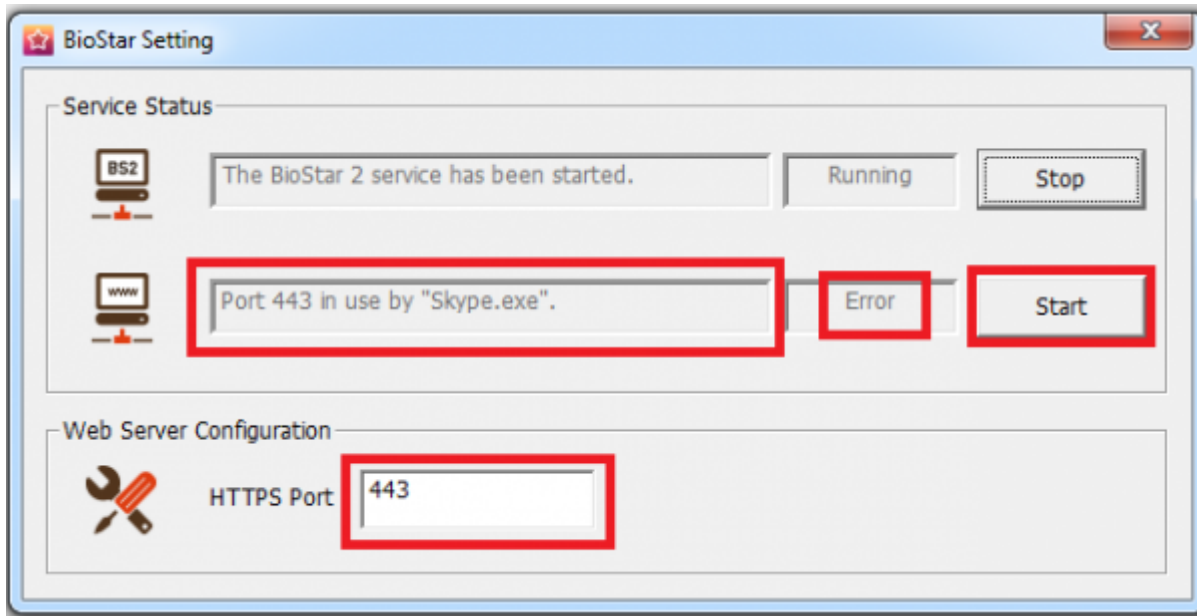
2. Go to **Setting > SERVER**.



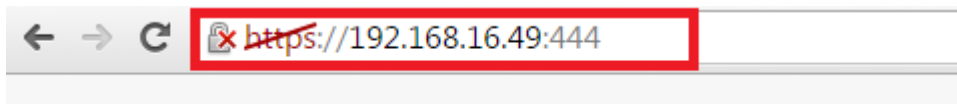
3. To enable HTTPS protocol, select **HTTPS** for **Web Server Protocol** and then click **Apply**.



4. Open BioStar Setting program (**All programs > BioStar 2 > BioStar Setting**) and make sure that all service is up and running. You may have the port 443 already designated for another application as displayed below and in this case, make sure you assign the unoccupied **HTTPS Port** and then click **Start** to run the service.

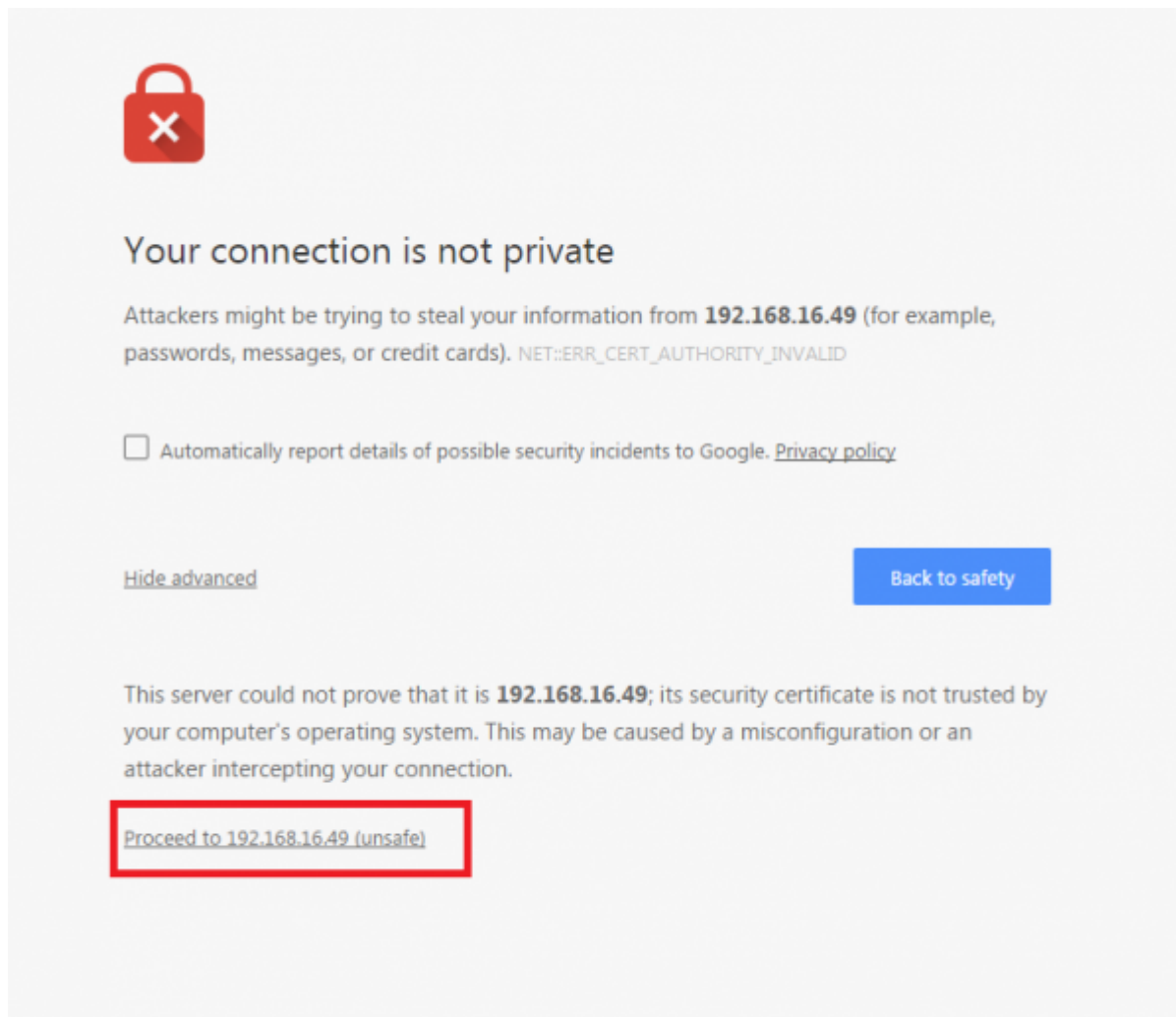


5. Try open the BioStar 2 web page along with the HTTPS port as displayed below.



6. The following error page may appear due to the security certificate presented by current BioStar 2 server is not issued by the trusted certificate authority.

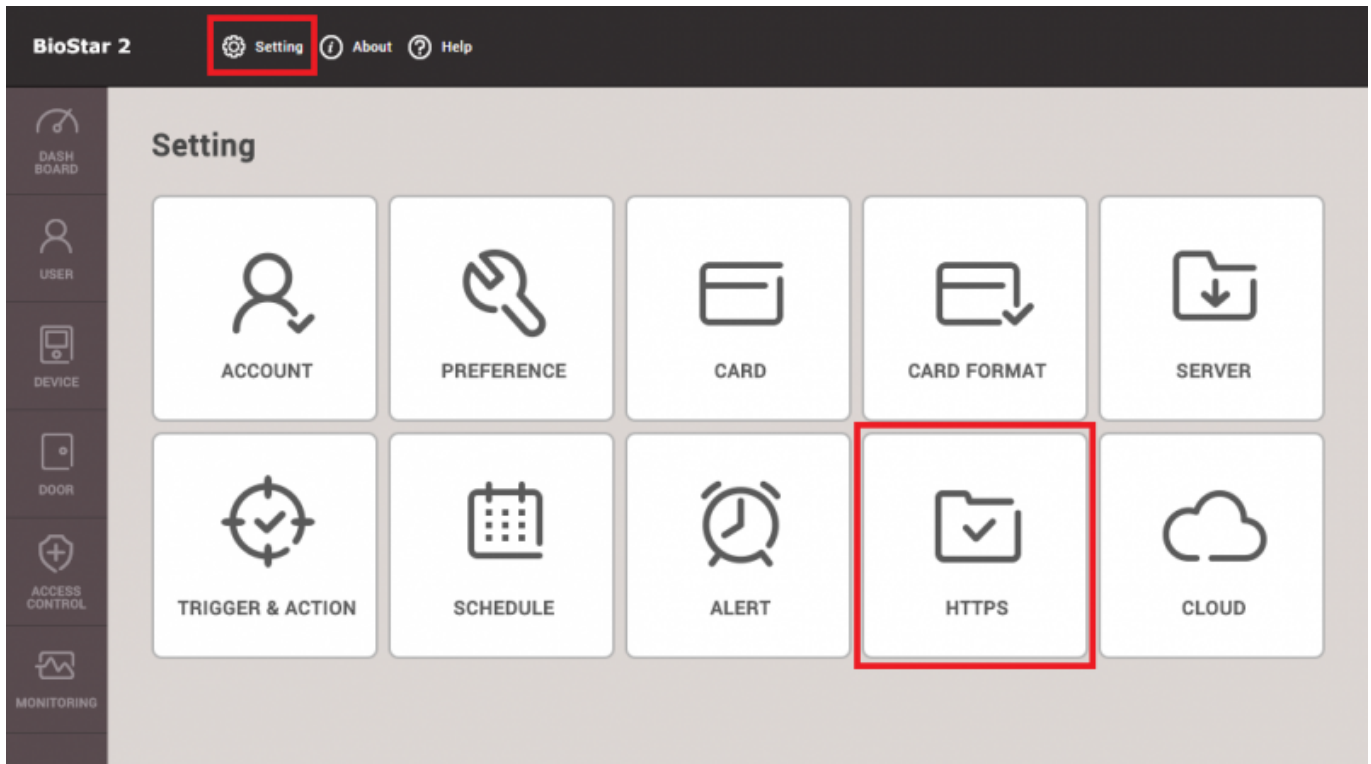
If your organization do not have public SSL certificate and want to get rid of the following error message, you can proceed with the following steps to issue a private security certificate using a tool provided by Suprema. Please select Advanced option and click **Proceed to xxx.xxx.xxx.xxx(unsafe)** for the temporary access.



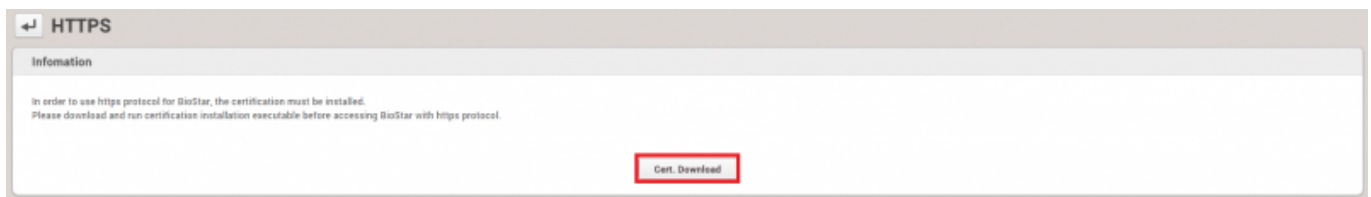
7. Once again, login with the administrator account.



8. Go to **Setting** > **HTTPS** which is newly created menu when you switch the Web Server protocol to HTTPS.



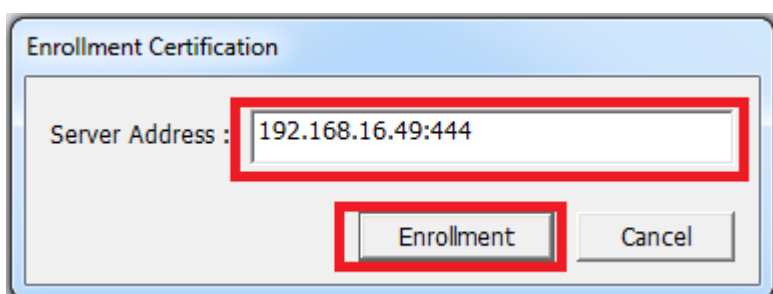
9. Click **Cert.Download** button to obtain a file named **cert-register.zip**.



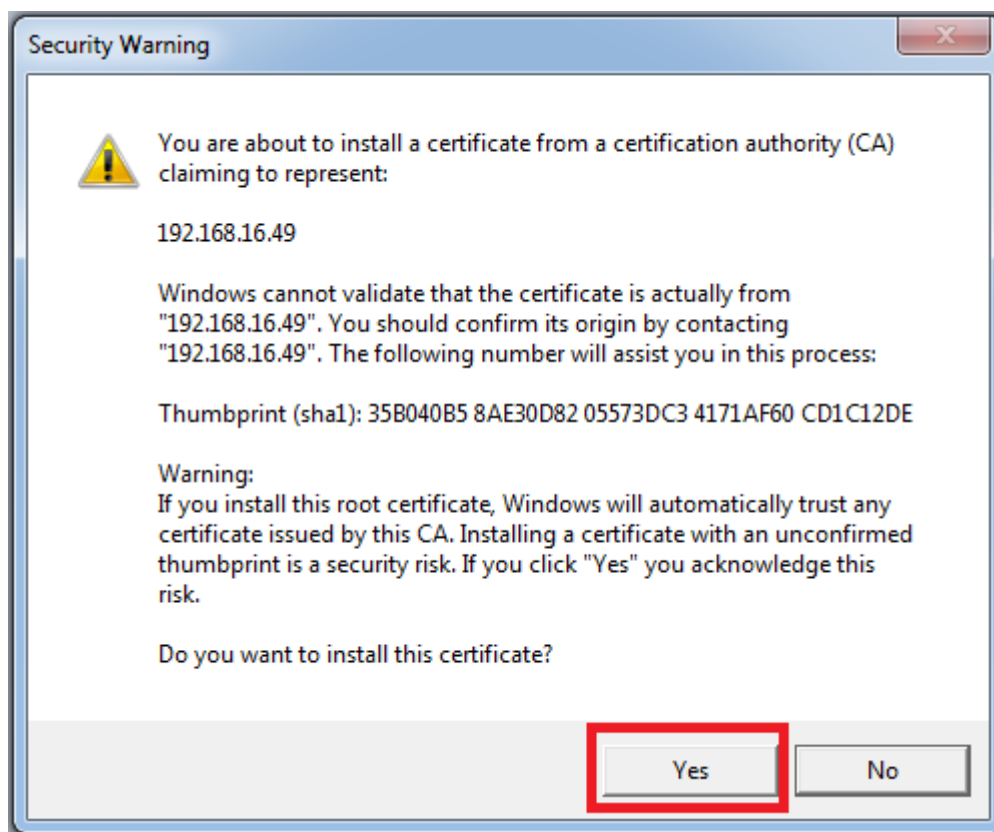
10. Unzip the **cert-register.zip** and run **cert-register.exe** file.

Name	Date modified	Type	Size
certmgr	12/29/2015 8:10 AM	File folder	
cert-register.exe	2/11/2015 4:57 PM	Application	2,211 KB

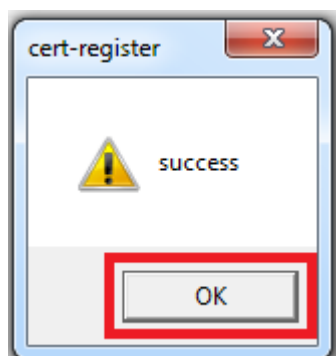
11. On the **Enrollment Certification** window, please enter the ip address of BioStar 2 server along with the HTTPS port you assigned on step 4 and then click **Enrollment** button.



12. Read the **Security Warning** message and if you are happy to proceed, please click **Yes**.



13. Once the tool successfully installed the certificate, you will see the following window to complete the process. Please click **OK** to confirm it.



14. To verify the installation, restart the web browser and try open the BioStar 2 web page. Make sure error message you encountered on step 6 is no longer presented.

From:
<http://kb.supremainc.com/knowledge/> -

Permanent link:
http://kb.supremainc.com/knowledge/doku.php?id=en:2xfaq_how_to_change_from_http_to_https&rev=1451440700

Last update: 2015/12/30 10:58