

Table of Contents

Allows Connecting X-Station 2 as a Slave Device of CoreStation 1

Supported models of X-Station 2 1

Feature notice 1

1. You CANNOT upgrade X-Station 2 firmware during the device is in Slave mode. 1

2. You can use 'Secure Tamper' on X-Station 2 Slave device. 2

3. Image Log setting is not available during X-Station 2 is in Slave mode. 2

Allows Connecting X-Station 2 as a Slave Device of CoreStation

Affect Products & Versions	
BioStar 2	BioStar v2.8.16 or above
Device & Firmware	CoreStation v1.5.2 or above

From BioStar 2.8.16, you can use X-Station 2 as a slave device for CoreStation. Please notice that you need to match the BioStar 2 and CoreStation firmware versions to use this function.





Firmware Version 1.5.2 (Build No. 1.5.2_211105)

Release: 2021-11-09

1. New Features and Improvements
 - 1.1. Supports new devices
 - X-Station 2
 - Input Module (IM-120)

Supported models of X-Station 2

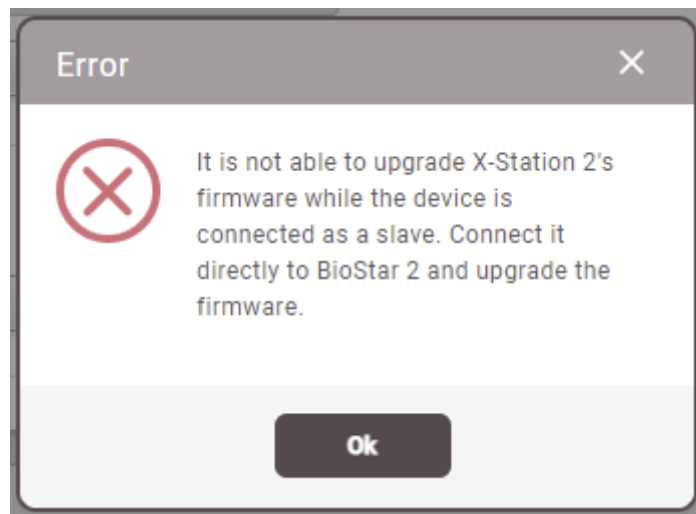
All models; Card only, Card + QR, Card + Fingerprint ([Check out X-Station 2 specifications](#))

	CoreStation 40 542071458 (192.168.12.225)
	XS2-APB 2 547836730
	XS2-ODPB 2 547837559
	XS2-QAPB 547837152

Feature notice

1. You CANNOT upgrade X-Station 2 firmware during the device is in Slave mode.

- To upgrade X-Station 2 Slave device's firmware, you need to connect the device to BioStar 2 directly via Ethernet.



2. You can use 'Secure Tamper' on X-Station 2 Slave device.

• Secure Tamper



* All the users, logs, and encryption key in the device will be removed at the secure tamper event.

3. Image Log setting is not available during X-Station 2 is in Slave mode.

- Suprema will improve this part in the further releases.

From:

<https://kb.supremainc.com/knowledge/> -

Permanent link:

https://kb.supremainc.com/knowledge/doku.php?id=en:allows_connecting_x-station_2_as_a_slave_device_of_corestation

Last update: 2022/09/20 15:35