

Table of Contents

Changing the Device Language (Custom) 1

How to set up? 1

Changing Language Display at Custom Setting 5

[BioStar 2](#), [device](#), [text](#)

Changing the Device Language (Custom)

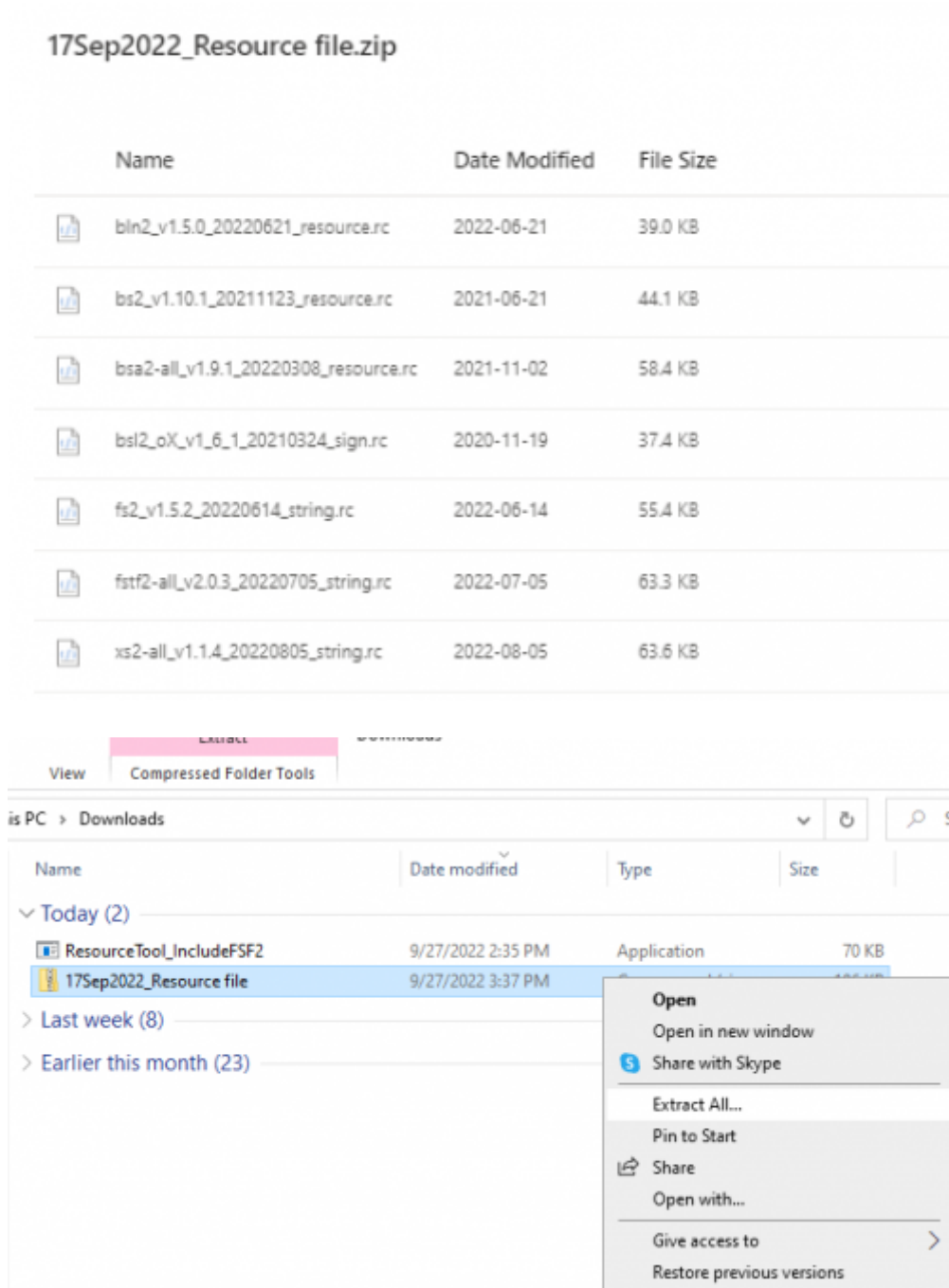
[English Display at English Language Setting / Spanish Display at Custom Language Setting]



It is possible to customize languages, or to change the message displayed on the device by configuring the device's resource file. Follow the steps below to change the texts displayed on the device (Facestation F2).

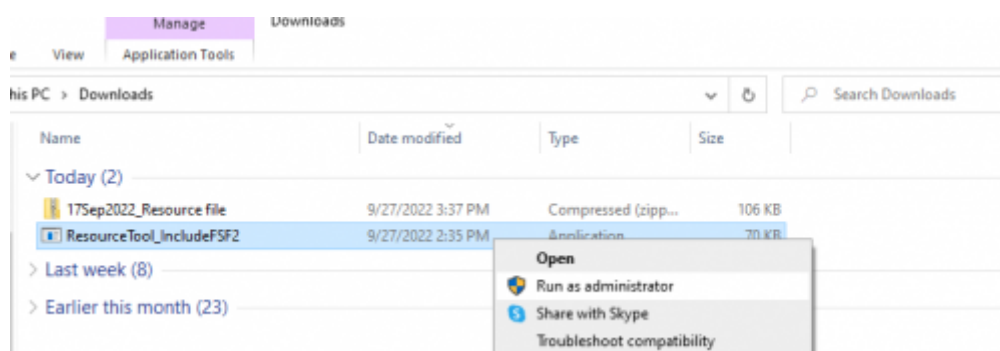
How to set up?

1. Download the Resource file zip folder that matches the device at [\[BioStar 2\] Changing the Device Language \(Translation\)](#) and unzip the zip folder.



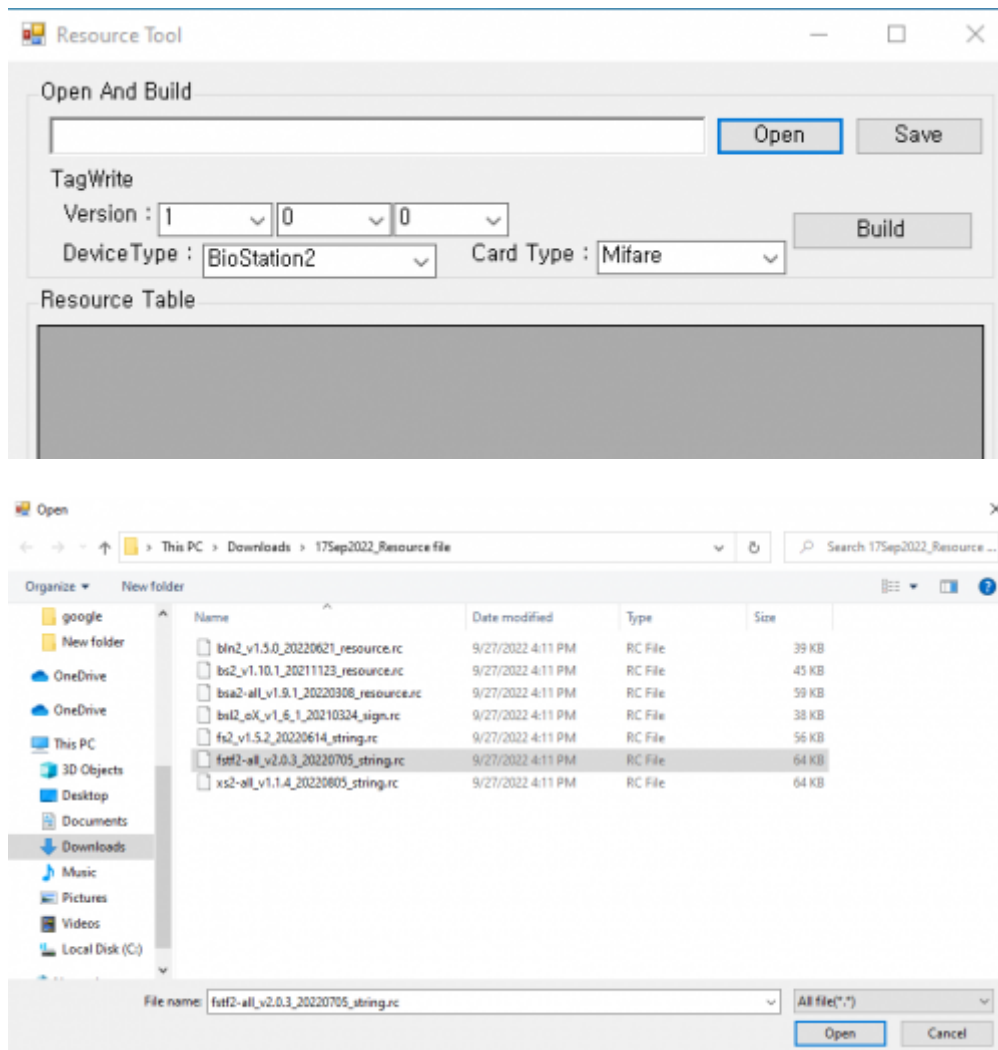
2. Download the Resource Tool. It is located inside the latest resource file.

3. Open ResourceTool_IncludeFSF2.exe and run as administrator.

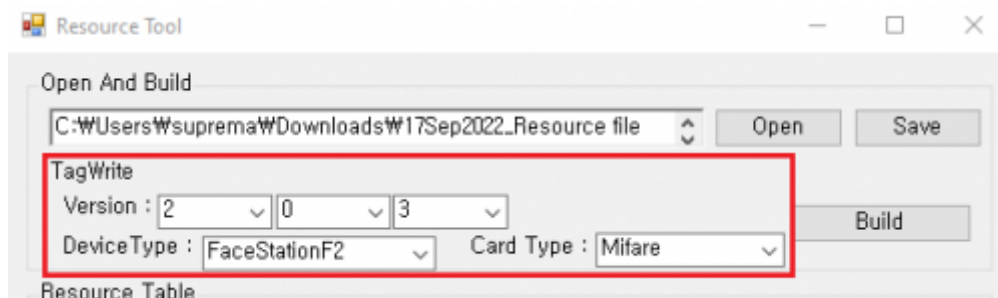


4. Press **Open** and choose the relevant resource inside the Resource file that fits the device. Select

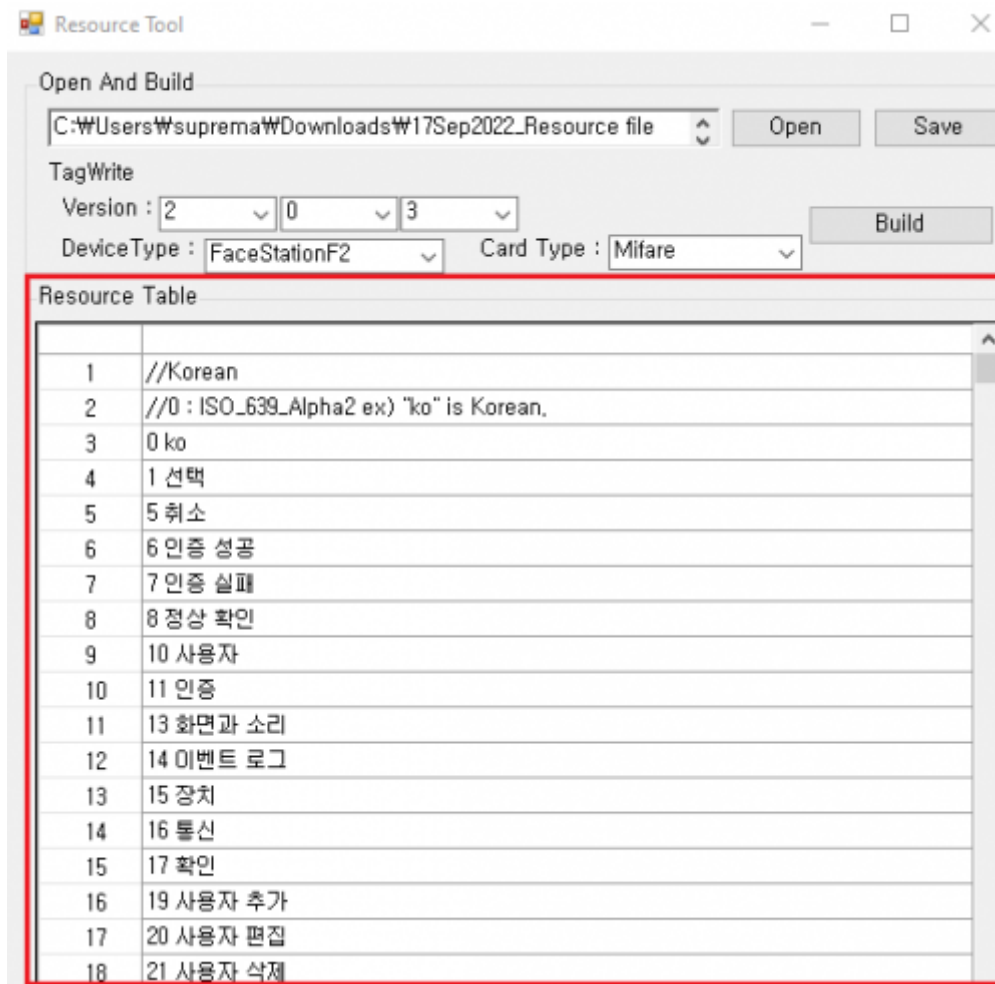
All file to search the resource file. Make sure that the device and the resource file's firmware match.



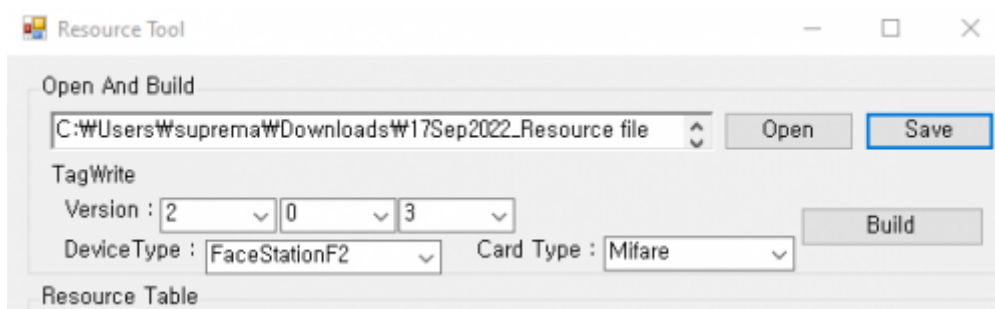
5. Fill out the information at **TagWrite** (Firmware Version, Device Type, Card Type). Note that the **DeviceType** must match to read resources at BioStar 2.

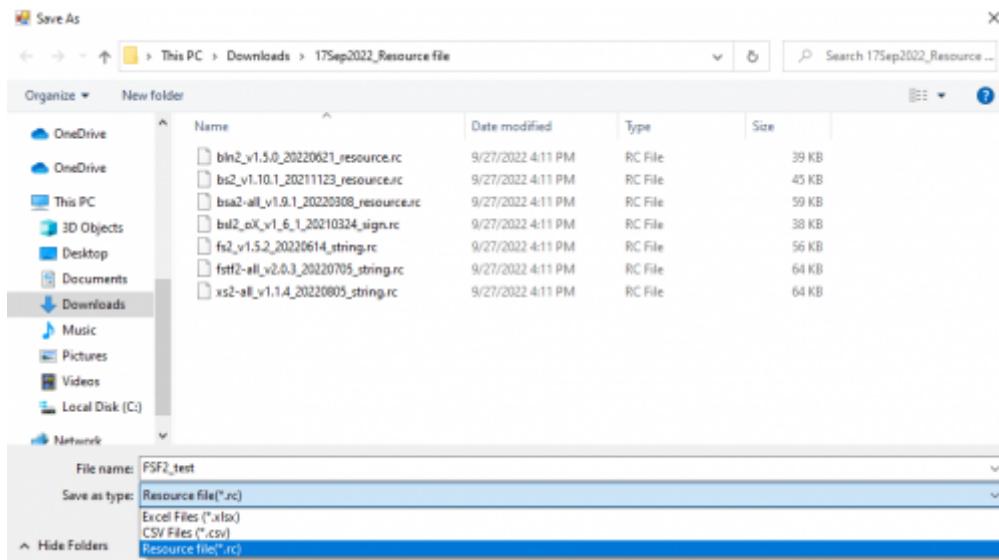


6. Change the text under **Resource Table** for text customization displayed on the device by editing here directly.



7. The edited information can be saved by pressing **Save**. Make sure to save the files in Resource file format (.rc).





Changing Language Display at Custom Setting

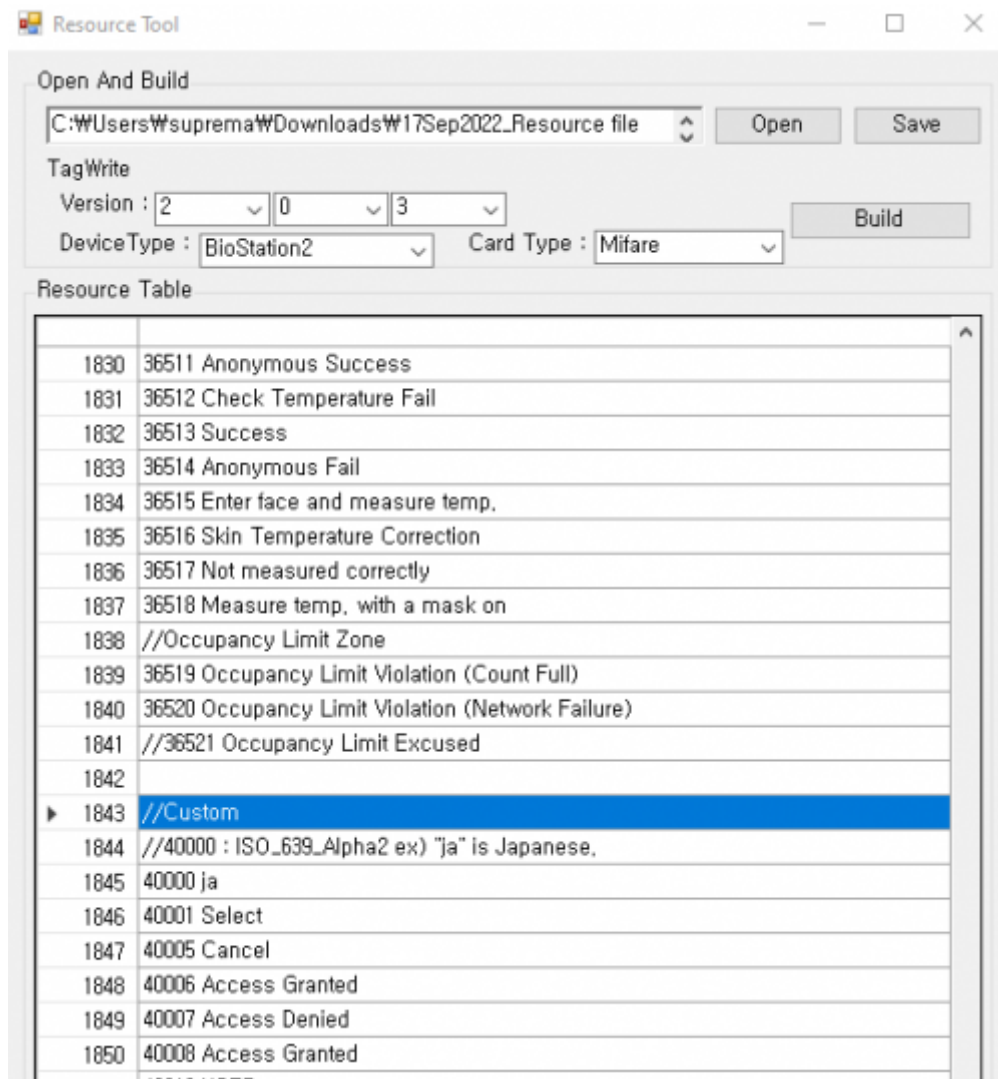
Here is a demonstration of putting a custom language to the device. I will set the language to **Custom** and change the “Access Granted” window to display it in Spanish “Acceso Permitido.”

*Note: If you use a language that requires a special font, scroll down the list and find the font at the end of the .rc file, uncomment and erase the section (for example, erase Latin :), and add **60000** to apply the font.

2764	//Latin : HelveticaNeueOTS
2765	//Japanese : HeiseiKakuGothW5_213_C
2766	//Chinese : MYuenSemiBd18030C
2767	// Arabic : UtahOTSArabic
2768	//60000 UtahOTSArabic
2764	60000 HelveticaNeueOTS
2765	//Japanese : HeiseiKakuGothW5_213_C
2766	//Chinese : MYuenSemiBd18030C
2767	// Arabic : UtahOTSArabic
2768	//60000 UtahOTSArabic

ex. Selecting Latin Font to display the username or text in Latin

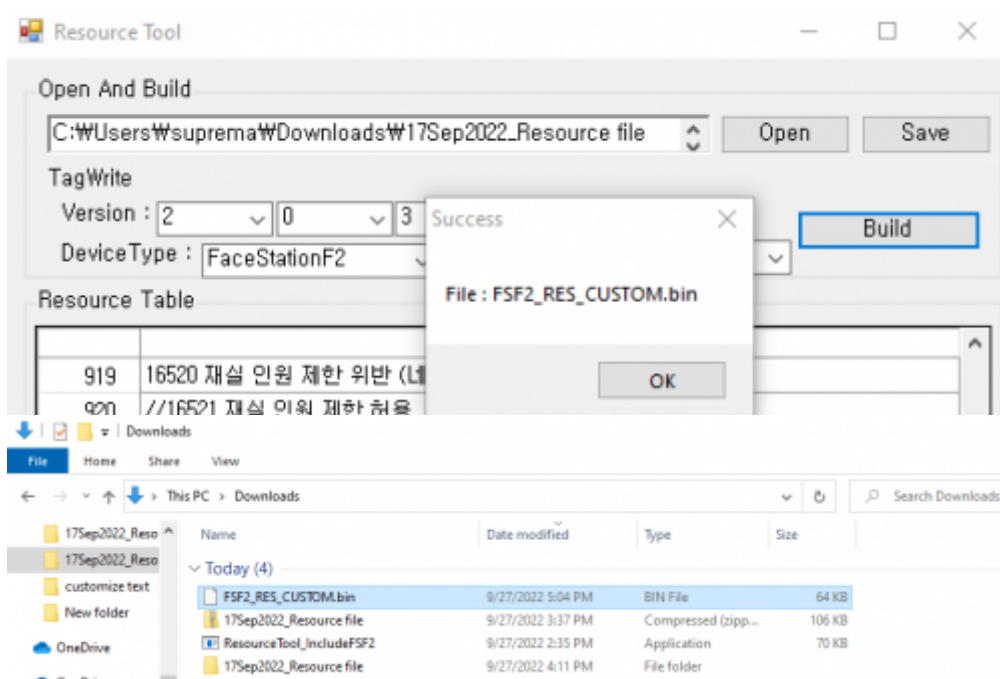
1. Find the **Custom** section at the **Resource Table**.



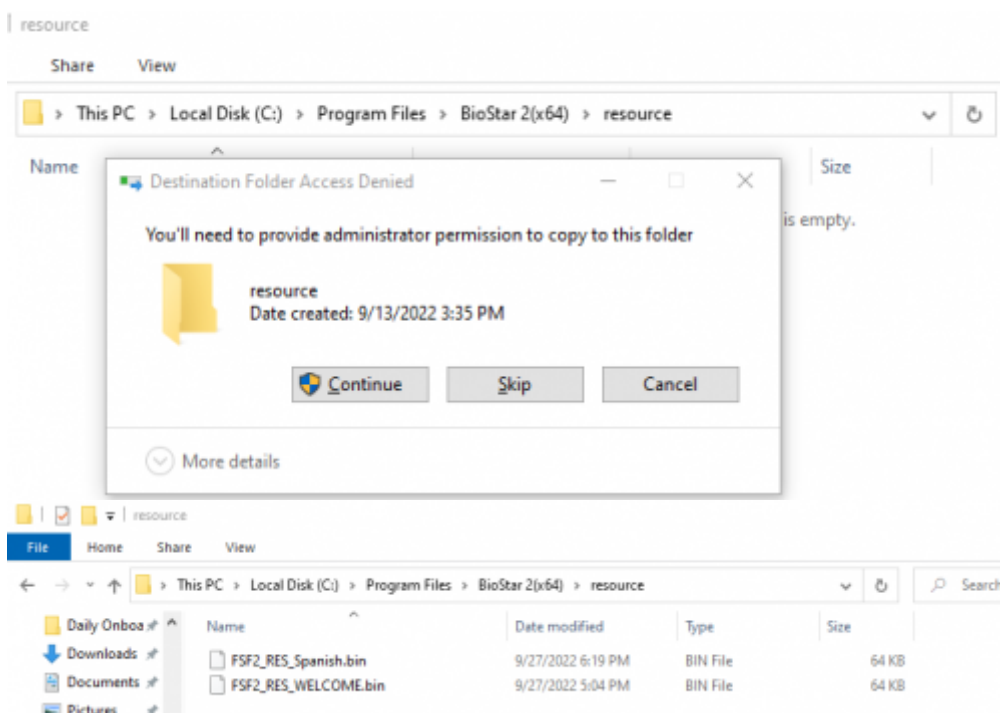
2. Find "Access Granted" and double click to edit. Change to "Acceso Permitido."

1843	//Custom
1844	//40000 : ISO_639_Alpha2 ex) "ja" is Japanese.
1845	40000 ja
1846	40001 Select
1847	40005 Cancel
1848	40006 Access Granted
1849	40007 Access Denied
1850	40008 Access Granted
1851	40010 USER
1843	//Custom
1844	//40000 : ISO_639_Alpha2 ex) "ja" is Japanese.
1845	40000 ja
1846	40001 Select
1847	40005 Cancel
1848	40006 Acceso Permitido
1849	40007 Access Denied
1850	40008 Access Granted
1851	40010 USER

3. Press **Build**. A **.bin** file will be created at the location of the Resource Tool. I will rename the file to FSF2_RES_Spanish.

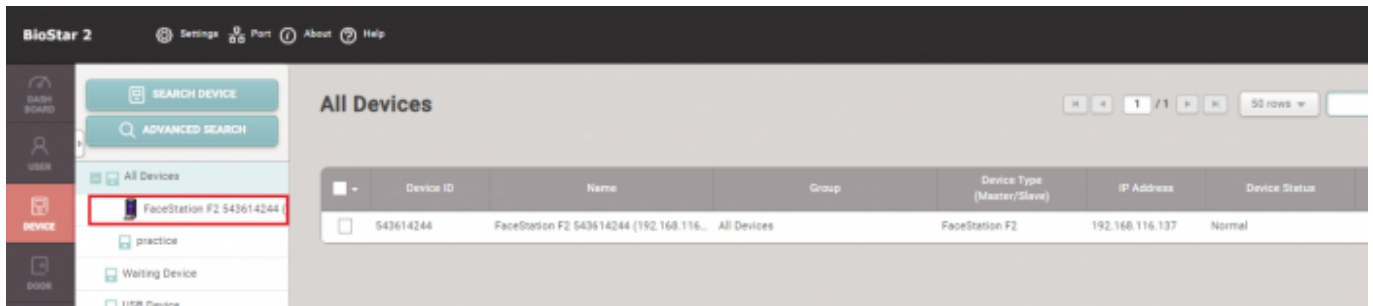


4. Copy the new **.bin** to <Program Files → BioStar 2(x64) → resource>. Continue with administrator permission.

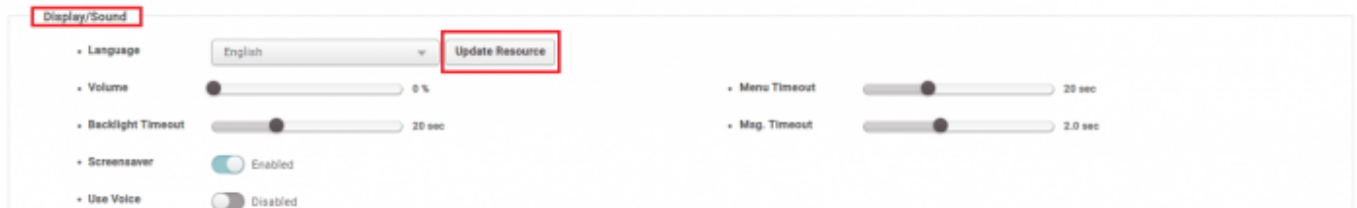


5. Login to BioStar 2.

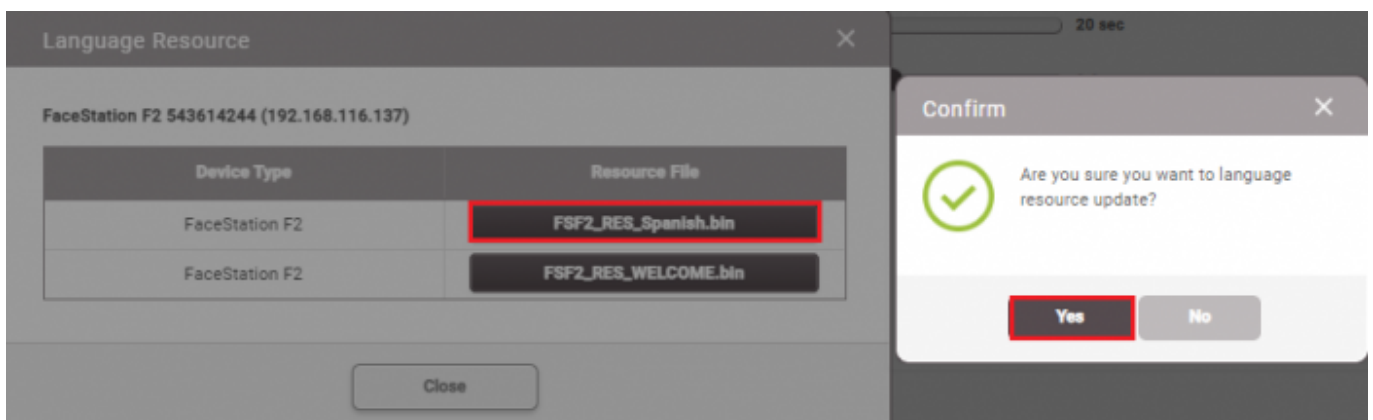
6. Go to Device and choose the device to customize.



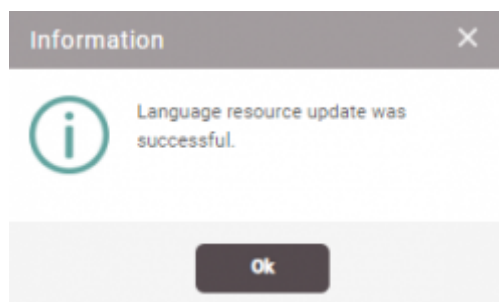
7. Go to **Advanced** → **Display/Sound**. Press **Update Resources**.



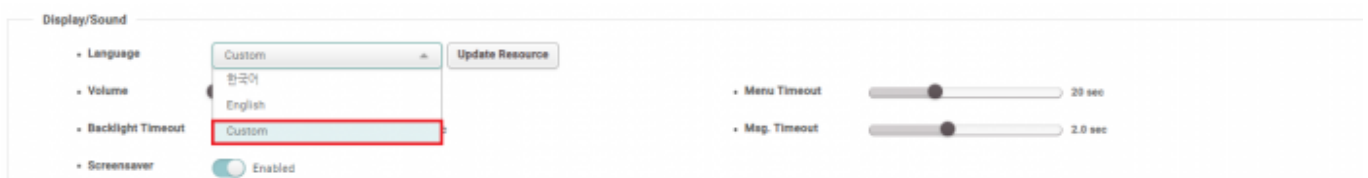
8. The **.bin** file inserted to the resource folder should show up. Press the **.bin** file and press **Apply**.

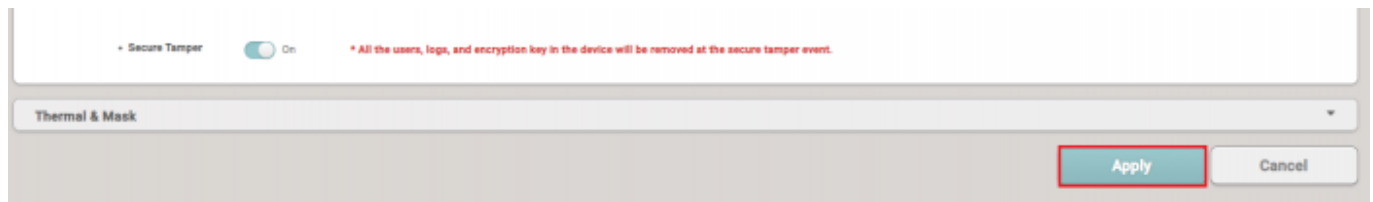


If successful, this message will appear.



9. The device will reset after applying the resource file. Go back to the **Display/Sound** settings and change the **Language** to **Custom**. Press **Apply**.





10. Check to see if the customization is applied on the device through authentication.

From:

<https://kb.supremainc.com/knowledge/> -

Permanent link:

https://kb.supremainc.com/knowledge/doku.php?id=en:changing_the_device_language_custom&rev=1667454459

Last update: **2022/11/03 14:47**