

Table of Contents

How to Enroll the CSN and Wiegand cards 1

Enrolling a CSN Card 1

Enrolling a Wiegand Card 2

[System Configuration](#), [BioStar 2](#), [card](#), ["CSN"](#), ["Wiegand"](#)

How to Enroll the CSN and Wiegand cards


You can easily enroll the cards to users in BioStar 2 with a Suprema device or a USB reader (DE-620). Your device may support Wiegand or CSN cards based on its model type.

Refer to the link to learn about card type support based on device model: [Device Card Read Specification](#)

DE-620 is supported by BioStar 2 v2.4.0 and above.

Enrolling a CSN Card

1. Click on the **DEVICE** menu of your BioStar 2.
2. Select a device.
3. On the **Authentication** tab's **CSN Card Format** set the **Format Type** as **Normal**.

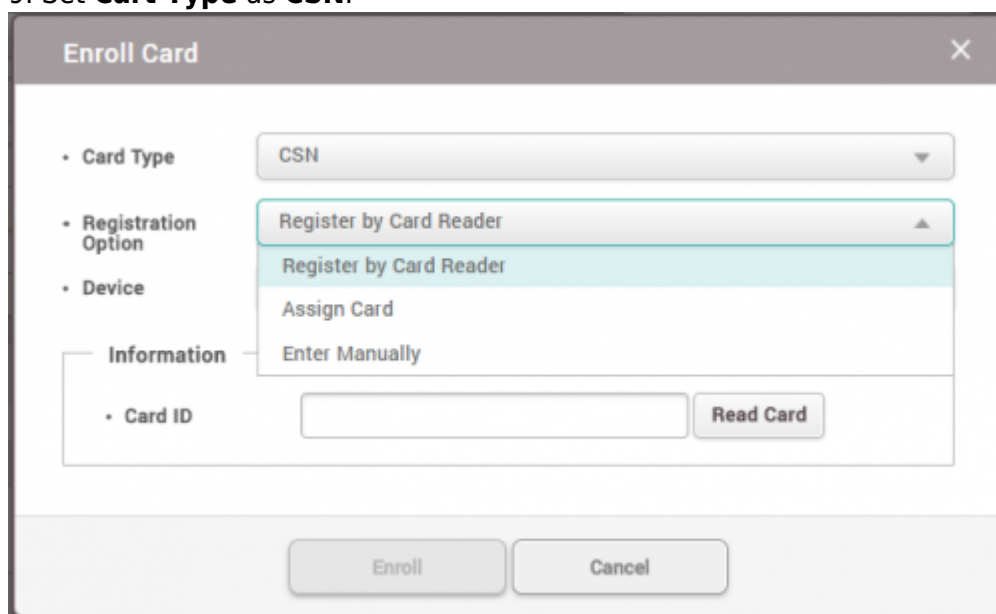


CSN Card Format

• Format Type ☒ Normal

• Byte Order MSB

4. Click **Apply**.
5. Click on the **USER** menu of your BioStar 2.
6. Click **ADD USER**.
7. Enter basic user information. (e.g. **Name**, **ID** and etc.)
8. Click **+ Card**.
9. Set **Card Type** as **CSN**.



Enroll Card

• Card Type CSN

• Registration Option Register by Card Reader

• Device Assign Card

Information Enter Manually

• Card ID Read Card

Enroll Cancel

10. For **Registration Option** choose **Register by Card Reader**.

Other Registration Options:

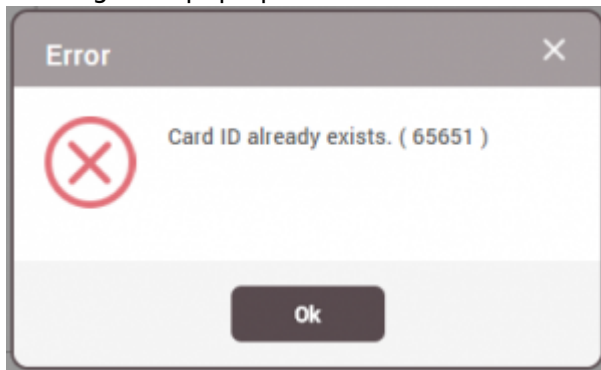
Assign Card: You will be able to reuse a card that has been enrolled before but was deleted from a user.

The list of cards that are unassigned can be seen in the **Settings > Card > Unassigned Card** list.

Enter Manually: Allows you to type in the card ID manually.

11. Click **Read Card**.
12. Scan the card on the device of your choice.
13. When the card is read successfully, click **Enroll**.

If you have already enrolled the card previously to another user and deleted the card, an error message will pop up.

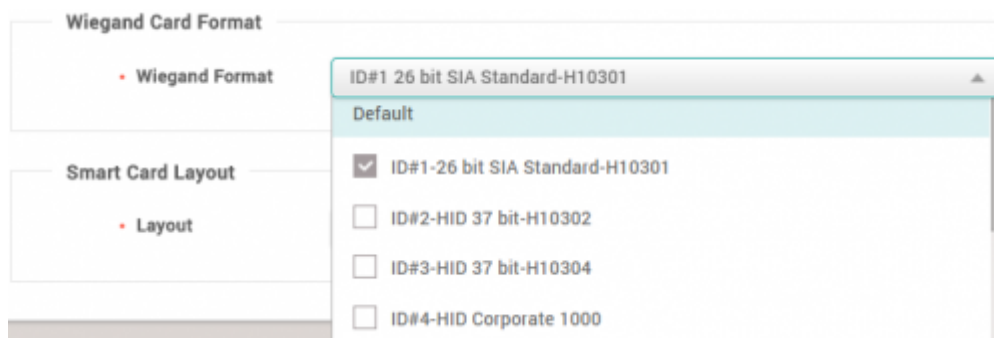


In this case you would have to use the **Assign Card Registration Option** to search for the CSN card and enroll.

14. Click **Apply**.

Enrolling a Wiegand Card

1. Click on the **DEVICE** menu.
2. Select your device.
3. On the **Authentication** tab's **Wiegand Card Format** set your desired **Wiegand Card Format**.



You can select multiple Wiegand formats to be read by selecting multiple formats.

If you are using a custom Wiegand format that is not listed in the default formats, you can configure your format in **Settings > Card Format > Wiegand**

4. Click **Apply**.
5. Click on the **USER** menu of your BioStar 2.
6. Click **ADD USER**.
7. Enter basic user information such as **Name**, **ID** and etc.
8. Click **+ Card**.
9. Set **Card Type** as **Wiegand**.

Enroll Card [X]

- Card Type: Wiegand
- Card Data Format: 26 bit SIA Standard-H10301
- Registration Option: Register by Card Reader
- Device: BioStation A2 541531003 (192.168.14.207)

Information

- Facility Code: [Input Field] [Read Card]
- Card ID 1: [Input Field]

[Enroll] [Cancel]

11. Select your **Card Data Format**.
12. Select **Registration Option** as **Register by Card Reader**.
13. Select your **Device**.
14. Click **Read Card**.
15. Scan your card on the device.
16. Click **Enroll**.
17. Click **Apply**.

From:

<https://kb.supremainc.com/knowledge/> -

Permanent link:

https://kb.supremainc.com/knowledge/doku.php?id=en:how_to_issue_csn_and_wiegand_cards

Last update: **2024/04/04 15:25**