

# Table of Contents

How to Use Thermal Function with FaceStation F2 .....

1

# How to Use Thermal Function with FaceStation F2

From BioStar 2.8.6, BioStar 2 supports FaceStation F2. FaceStation F2 supports Suprema's thermal camera product TCM10-FSF2 from the first firmware (1.0.0). It will be easier for the customers who have experienced TCM10-FS2 on FaceStation 2 before.

1. Connect TCM10-FSF2 product to FaceStation F2. Refer to the photo below for the bracket sample and thermal camera product.



Suprema Thermal Camera  
TCM10-FSF2

- The USB port types of FaceStation F2 and FaceStation 2 are different. (FaceStation F2 - USB Type C, FaceStation 2 - USB Type A)
- The TCM10-FS2 cable is of a different type from the TCM10-FSF2 cable.
- Supported FaceStation F2 products are FSF2-DB, FSF2-AB, or FSF2-ODB.

2. Add FaceStation F2 product to your BioStar 2. Please double check if it is BioStar 2.8.6 or above.

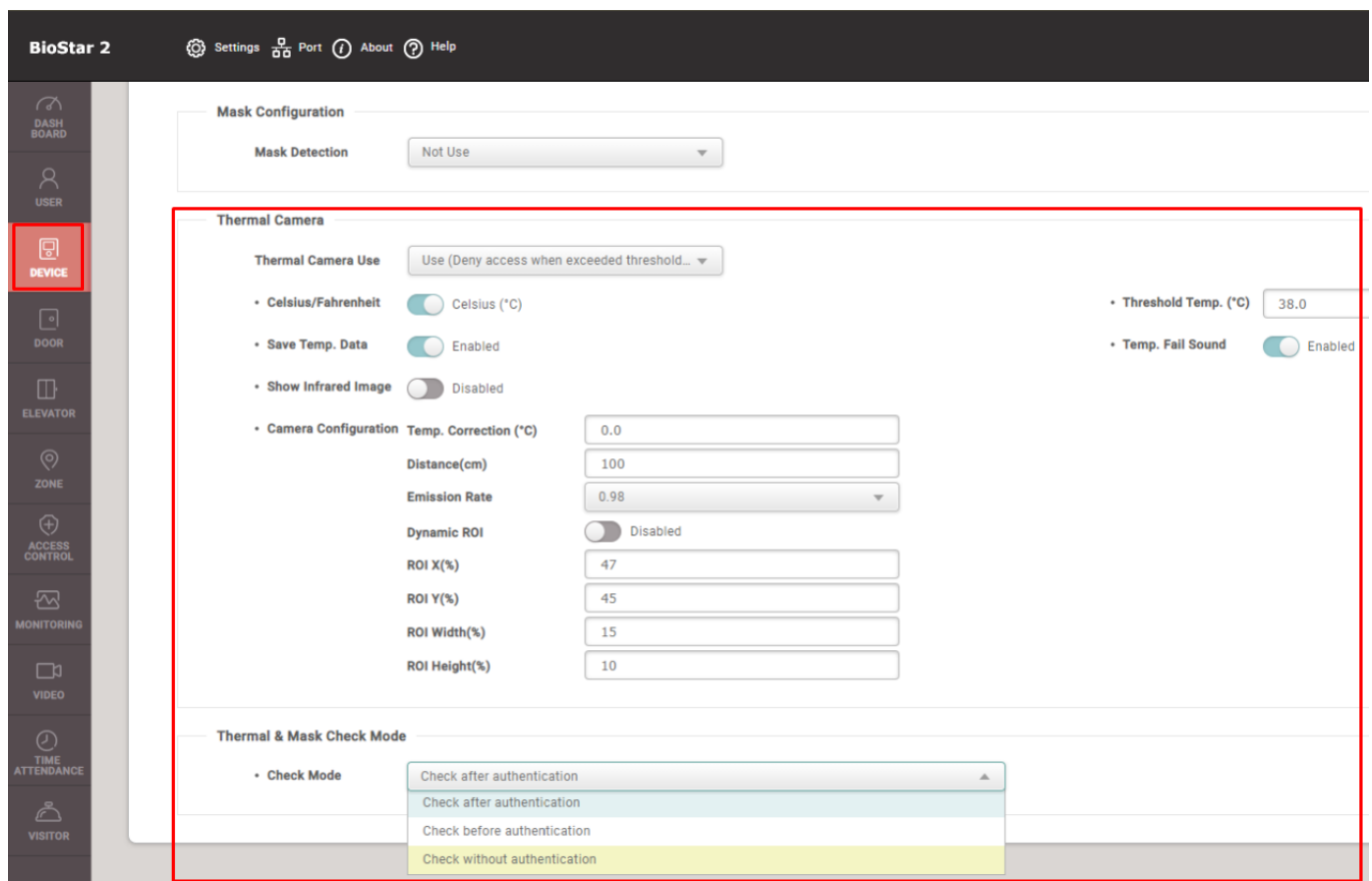
3. Activate the Thermal Camera function on the FaceStation F2 product.

1) How to check in FaceStation F2 device menu

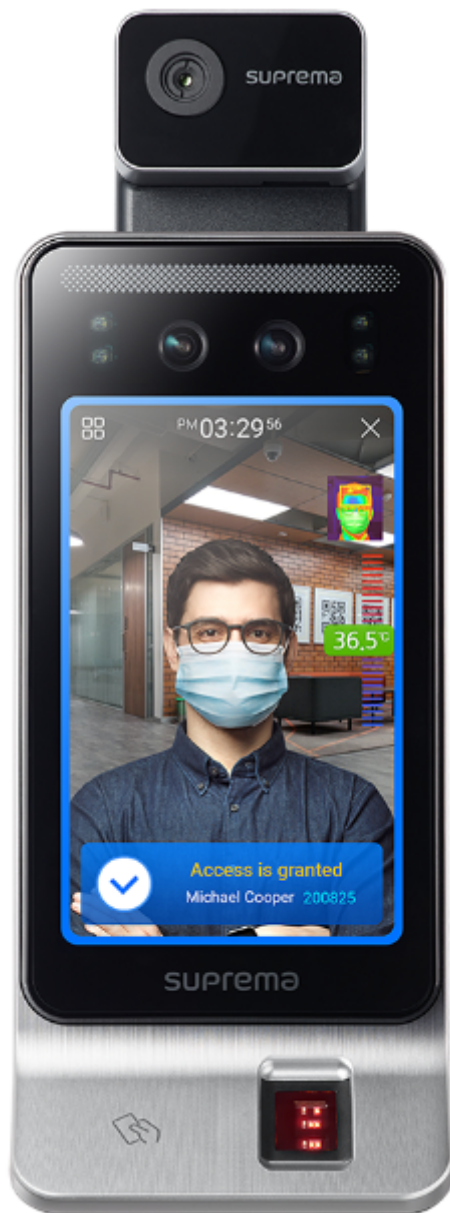
- Device menu> Authentication> Face> Advanced Settings
- Download the device user guide from the link below and check the details. [Download Link](#)

2) How to check in BioStar 2

- BioStar 2> Device> (Choose your device)> Thermal & Mask



4. If FaceStation F2 and TCM10-FSF2 are well connected, user authentication will be displayed on the temperature on the screen as shown in the sample below.



Event Log										50 rows
Save Filter		Period	1 Day(s) (2020/09/28 00:00 ~ 2020/09/28 23:59)		Celsius/Fahrenheit		Celsius (°C)			...
Date	Door	Device ID	Device	User Group	User	Tempe...	Event	View		
2020/09/28 16:27:27		547835909	FaceStation F2 547835909 (192...	All Users	2(Visual Face Test User)		User deletion succeeded (BioStar)			
2020/09/28 16:26:27		547835909	FaceStation F2 547835909 (192...	All Users	2(Visual Face Test User)	36.00	1:N authentication succeeded (Face)			
2020/09/28 16:26:24		547835909	FaceStation F2 547835909 (192...	All Users	2(Visual Face Test User)	36.00	1:N authentication succeeded (Face)			
2020/09/28 16:26:21		547835909	FaceStation F2 547835909 (192...	All Users	2(Visual Face Test User)	35.90	1:N authentication succeeded (Face)			
2020/09/28 16:26:17		547835909	FaceStation F2 547835909 (192...	All Users	2(Visual Face Test User)	36.70	1:N authentication succeeded (Face)			
2020/09/28 16:26:14		547835909	FaceStation F2 547835909 (192...	All Users	2(Visual Face Test User)	36.00	1:N authentication succeeded (Face)			
2020/09/28 16:26:01		547835909	FaceStation F2 547835909 (192...	All Users	2(Visual Face Test User)	36.40	1:N authentication succeeded (Face)			
2020/09/28 16:25:58		547835909	FaceStation F2 547835909 (192...	All Users	2(Visual Face Test User)	36.00	1:N authentication succeeded (Face)			
2020/09/28 16:25:55		547835909	FaceStation F2 547835909 (192...	All Users	2(Visual Face Test User)	35.80	1:N authentication succeeded (Face)			

From:

<http://kb.supremainc.com/knowledge/> -

Permanent link:

[http://kb.supremainc.com/knowledge/doku.php?id=en:how\\_to\\_use\\_thermal\\_function\\_with\\_facestation\\_f2](http://kb.supremainc.com/knowledge/doku.php?id=en:how_to_use_thermal_function_with_facestation_f2)

Last update: **2021/12/17 10:57**