



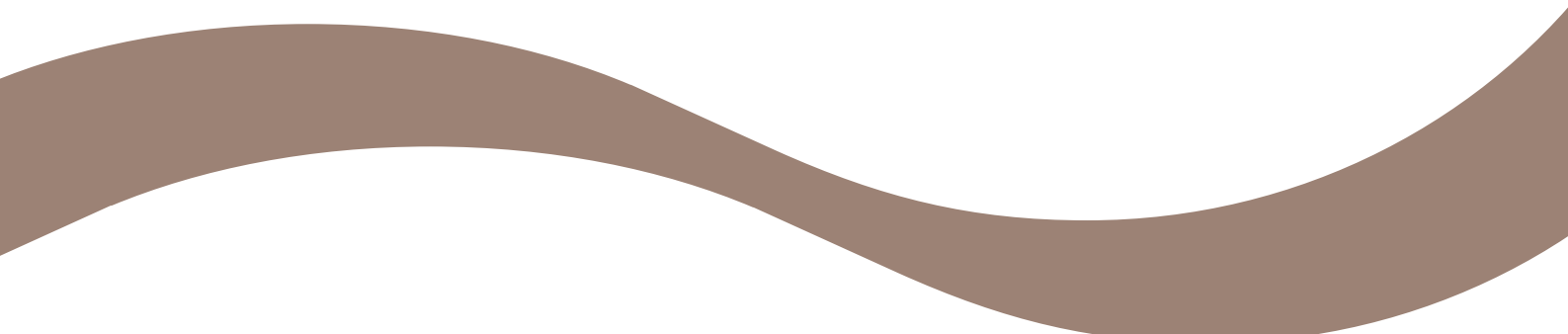
# NEW FEATURE GUIDE

BioStar 2.3.0

---

English

**Version 1.00**



# Contents

<b>BioStar 2.3.0</b> .....	<b>2</b>
MariaDB – A Major Leap Forward.....	2
Customized Privilege – Easy Registration of Various User Privilege .....	2
BioStation A2 Videophone – SIP based Configuration .....	3
Improved Wiegand Card – Facility Code Configuration and More.....	4
Facility Code Configuration. ....	4
Device Wiegand Format Configuration Based on Device.....	5
Batch Change of Wiegand Format.....	5
Multiple Wiegand Input/Output Format Support for Devices .....	5
Automatic Door Configuration - Utilization of Diverse Door Types.....	6
CSV Import – Simpler User Information Management .....	6
Improved Alert – Use WAV, MP3 Files as Alert Sounds.....	7
Responsive Global Menu – Support for Monitors with Low Resolutions.....	8

- This document describes the new features introduced in BioStar 2.3.
- Please refer to BioStar 2 administrator’s manual for detailed instructions on how to use each feature.

# BioStar 2.3.0

## MariaDB – A Major Step Forward

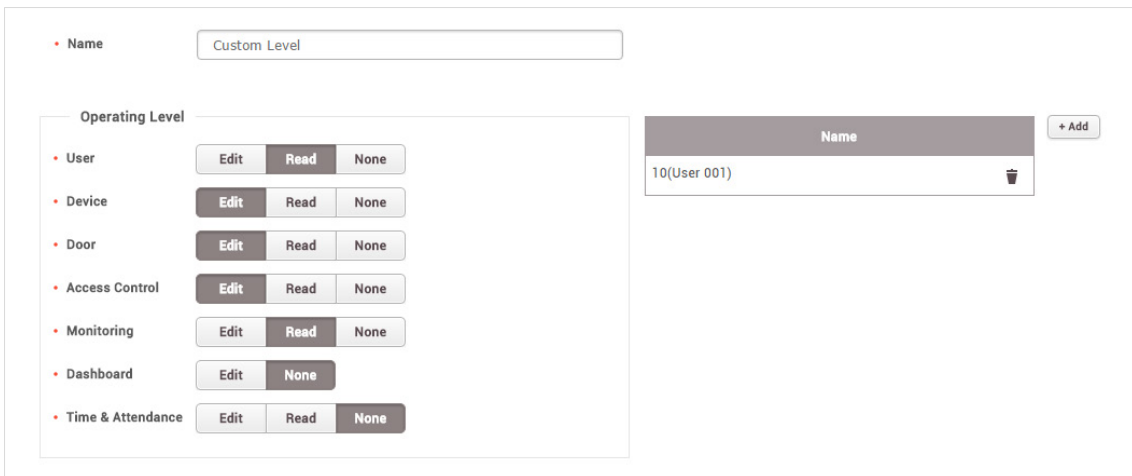
We have changed the database, which is the core element in data processing, to improve the performance and stability of BioStar 2. Through the powerful relational database Maria DB, BioStar 2 provides faster data processing speeds and stability in comparison to previous versions using SQLite. Database integration with third party systems through DB Link is now possible as well.

### ! Note

- SQLite can only be used up to BioStar version 2.2.2.
- If BioStar 2.3.0 is installed on top of a BioStar 2.2.1 or 2.2.2 installation, all information stored in the SQLite database is migrated to a new Maria Database.
- The automatic update is no longer supported in BioStar 2.3 since an external MariaDB database server can be designated during the installation process.

## Customized Privilege – Easy Registration of Various User Privilege

BioStar 2 has the administrator, user operator, monitoring operator, T&A administrator, and normal user as the basic privileges. Each privilege has a distinct configuration for its role but if you would like to add a new privilege, this can be done effortlessly in the **Setting > Account** menu. You can add up to 32 customized privileges.



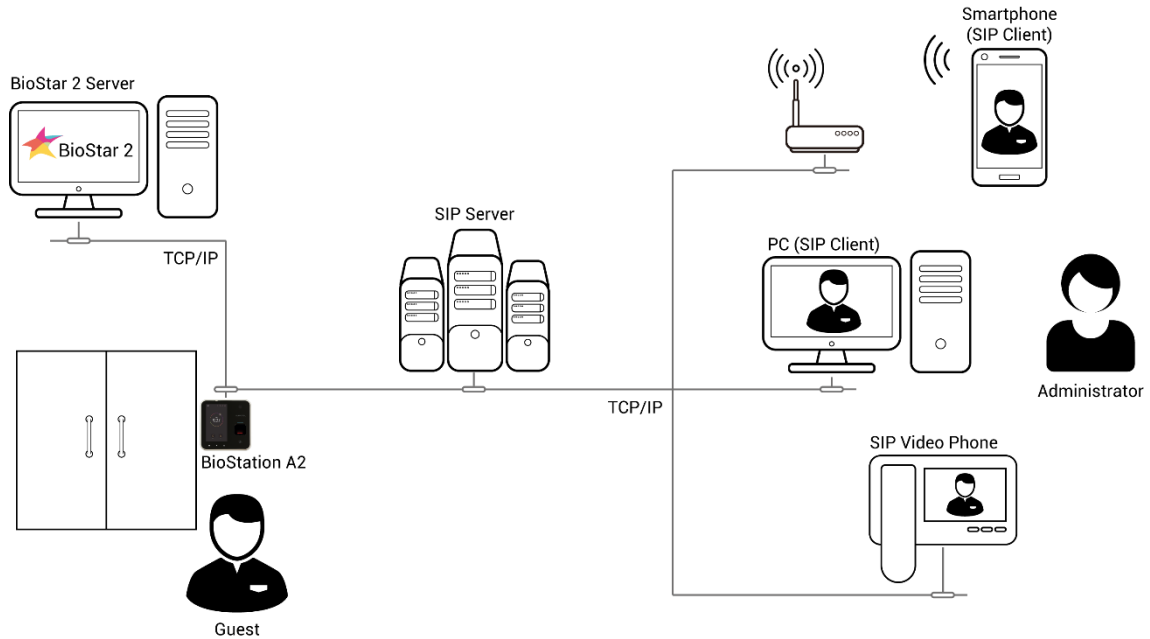
[Customized privilege configuration screen]

### ! Note

- The feature to manage user and device based on groups will be provided in a future version.

## BioStation A2 Videophone – SIP based Configuration

There is no need to install a separate videophone if BioStation A2 is installed as an entrance device. BioStation A2 can be used as a videophone in an environment that has Session Initiation Protocol (SIP) and IP Private Branch Exchange (PBX) installed.



**Interphone**

Use

• SIP Server IP Address:

• SIP Server Port:

• Account ID:

• Account Password:

• Open Door Button (DTMF):

• DTMF Mode:

Extension Number	Display Name	
<input type="text" value="001"/>	<input type="text" value="Info Desk"/>	<input type="button" value="🗑"/>
<input type="text" value="045"/>	<input type="text" value="Tim"/>	<input type="button" value="🗑"/>
<input type="text" value="046"/>	<input type="text" value="Cindy"/>	<input type="button" value="🗑"/>
<input type="text" value="047"/>	<input type="text" value="Michael"/>	<input type="button" value="🗑"/>

[BioStation A2 - SIP based videophone configuration screen]

### ⚠ Note

- This feature is supported by BioStation A2 only.
- We recommended to use Asterisk for the SIP server.

## Improved Wiegand Card – Facility Code Configuration and More

BioStar 2.3 implemented many improvements on managing the Wiegand format. When configuring a Wiegand format, the facility code can now be added and the format can be configured directly on the device. Additional features to change all registered Wiegand formats simultaneously and configuration of multiple Wiegand input/output formats have been developed also.

### Facility Code Configuration.

The facility code can now be added when configuring the Wiegand format.

Start Bit	End Bit	Size
		0

Start Bit	End Bit	Size
		0

Position	Type	Start Bit	End Bit	Size
	Odd			0

[Add wiegand format screen]

The facility code is used when configuring a Wiegand format and also when a card is registered. The facility code and card ID is displayed separately on the screen when a card is scanned and registered on a device. You can also enter the facility code and card ID separately when entering the card information manually.

Enroll Card

• Card Type: Wiegand

• Card Data Format: 26 bit SIA Standard-H10301

• Registration Option: Register by Card Reader

• Device: BioStation A2 541531008 (192.168.16.200)

Information

• Facility Code:  Read Card

• Card ID 1:

Enroll Cancel

Enroll Card

• Card Type: Wiegand

• Card Data Format: 26 bit SIA Standard-H10301

• Registration Option: Enter Manually

Information

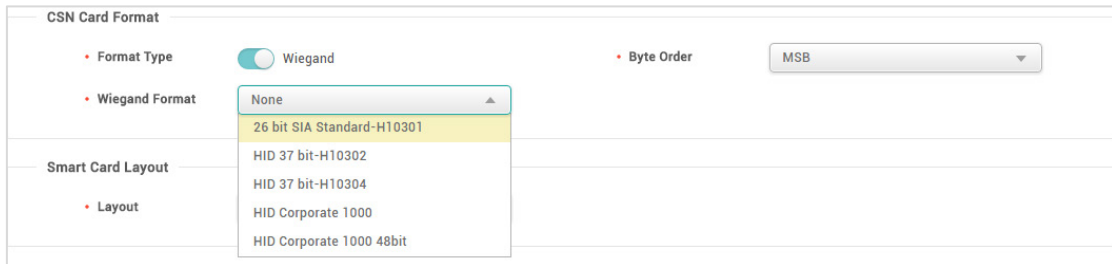
• Facility Code:

• Card ID 1:

Enroll Cancel

## Device Wiegand Format Configuration Based on Device

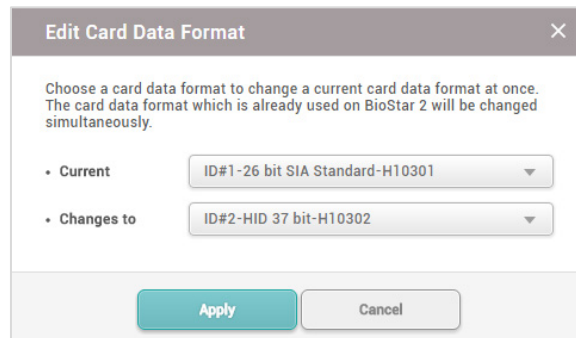
Similar to configuring a smart card layout, the Wiegand format can be set separately for each device. A device set with a Wiegand format can only read Wiegand cards that has the same format.



[Device - Wiegand format configuration page]

## Batch Edit of Wiegand Format

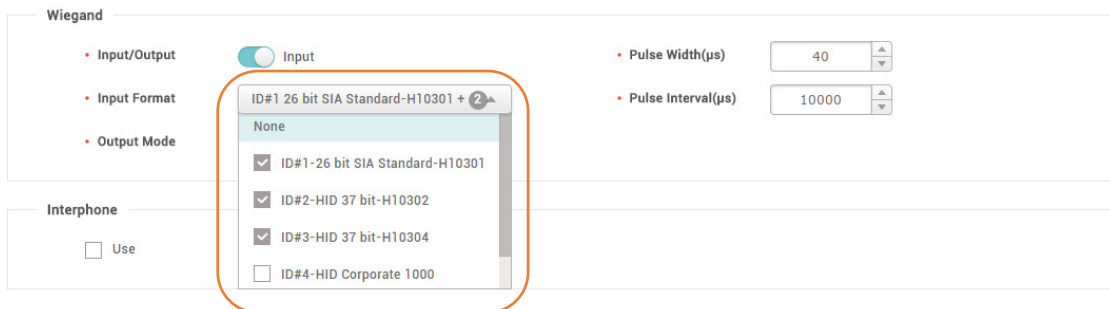
The Wiegand format has to be changed collectively if the existing Wiegand card is to be used on BioStar 2.3. This is necessary because previously registered Wiegand cards did not save the Wiegand format. This operation changes the Wiegand format of the cards from one to another. For example, if you change from 26 bit to 37 bit as shown in the screenshot below, all the cards that have previously had the 26 bit Wiegand format will have the 37 bit Wiegand format.



[Changing card data format screen]

## Multiple Wiegand Input/Output Format Support for Devices

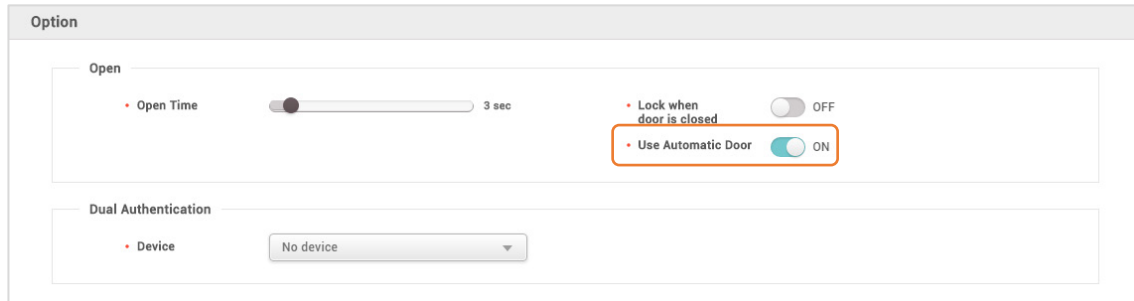
A new feature has been implemented for Suprema devices that greatly improves the method in which they process Wiegand signals. On BioStar 2.3, a device can now process multiple Wiegand formats.



[Device - Multiple Wiegand input/output format configuration screen]

## Automatic Door Configuration - Utilization of Diverse Door Types

There are various types of automatic doors in contrast to hinged doors and hence open or closed status of the door is difficult to detect. You can turn on the 'use automatic door' option on BioStar 2.3 so that the relay will operate based on user authentication, ignoring the status of the door sensor.



[Use automatic door configuration screen]

## CSV Import – Simpler User Information Management

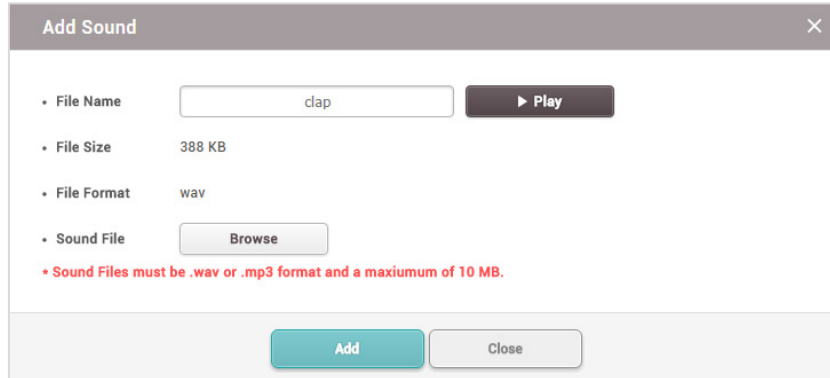
BioStar 2.3 provides a more convenient CSV import function. An option to process duplicate user information has been added and the fields of the selected CSV file will be automatically mapped and displayed for the administrator. You can edit the necessary fields if there is an error importing the CSV file.



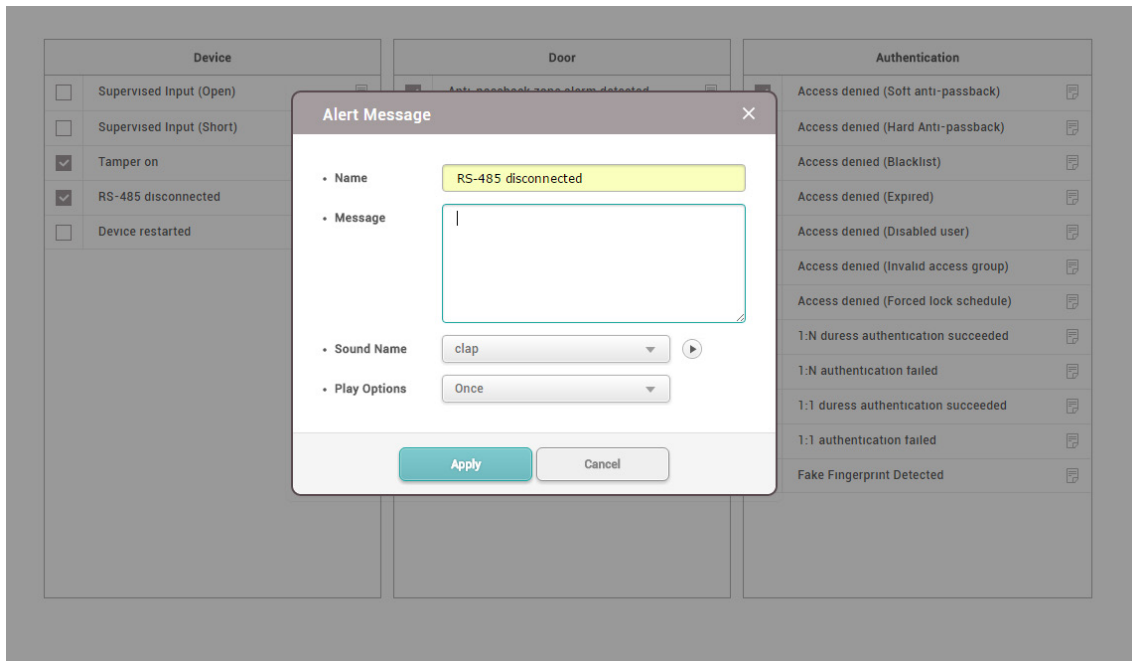
[CSV import screen]

## Improved Alert – Use WAV, MP3 Files as Alert Sounds

BioStar 2's system alert only appeared as a notice on the screen and this made it difficult for the administrator to see the alert. BioStar 2.3 allows the user to add desired sound files which can be configured to be played when an alarm occurs. The uploadable sound file formats are .wav and .mp3.



[BioStar 2 add alert sound screen]



[BioStar 2 alert message and sound configuration screen]

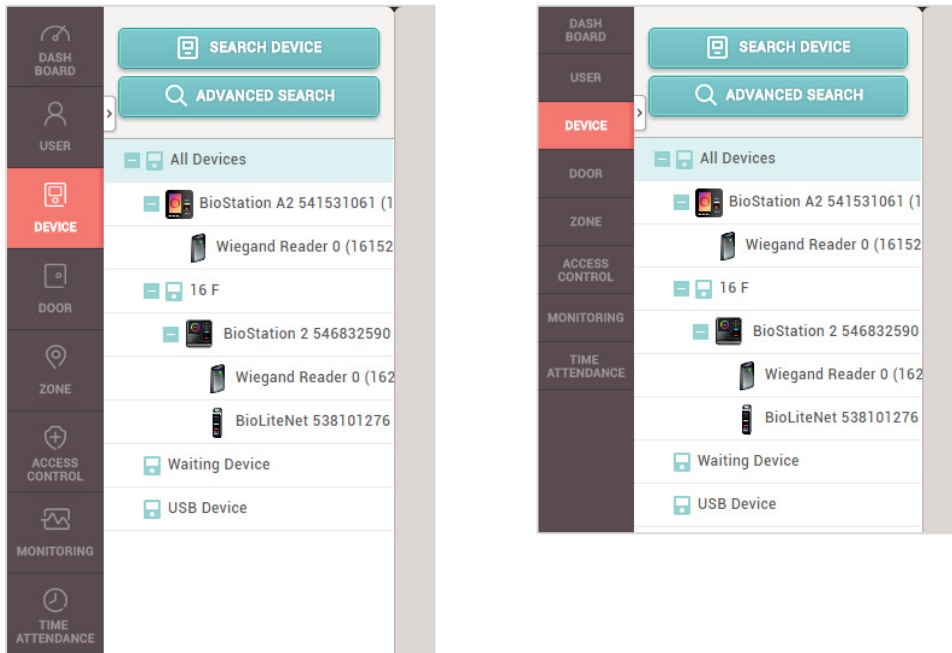
### ⚠ Note

- Alert sounds for a door on held open or forced open events that are generated by devices can only be configured to use the internal sounds.



## Responsive Global Menu – Support for Monitors with Low Resolutions

You can now use BioStar 2 on devices with low resolutions such as laptops and netbooks without any hassle. BioStar 2 will now automatically identify the web browser's resolution and change the global menu size accordingly.



[Global menu size comparison based on resolution]



[www.supremainc.com](http://www.supremainc.com)

---

Suprema Inc. 16F Parkview Office Tower, Jeongja-dong, Bundang-gu Seongnam, Gyeonggi, 463-863 Korea  
Tel) +82-31-783-4502 Fax) +82-31-783-4503

**Sales information** [sales@supremainc.com](mailto:sales@supremainc.com) **Technical support** [support@supremainc.com](mailto:support@supremainc.com)