



# INSTALLATION GUIDE

BioStar 2 API Server V2.5.0

---

English

# Contents

---

<b>Getting Started .....</b>	<b>3</b>
<b>System Requirements.....</b>	<b>3</b>
Limitation .....	3
<b>Installing BioStar 2 API Server.....</b>	<b>4</b>
<b>Accessing BioStar 2 API Server.....</b>	<b>6</b>

## Getting Started

BioStar 2 API Server is a program to use BioStar 2 API on the local network. Before installation, please check the **System Requirements**.

## System Requirements

Item		Medium	Enterprise
System requirement (Server)	OS	<ul style="list-style-type: none"> <li>Windows Server 2008 R2 Standard 64 bit or later</li> <li>Windows 7 Home Premium 64 bit or later</li> </ul>	<ul style="list-style-type: none"> <li>Windows Server 2008 R2 Standard 64 bit or later</li> <li>Windows 7 Home Premium 64 bit or later</li> </ul>
	CPU	4 GHz Quad Core	4 GHz Quad Core
	RAM	8 GB	16 GB
	HDD	1 TB	2 TB

## Limitation

- With BioStar 2 API Server, only one third-party App can be connected. However, the number of available API calls is not limited.
- With BioStar 2 API Server, push alarm function is not supported on BioStar 2 Mobile App.
- When BioStar 2 API Server uses HTTPS, you cannot access the BioStar 2 Mobile App.

# Installing BioStar 2 API Server

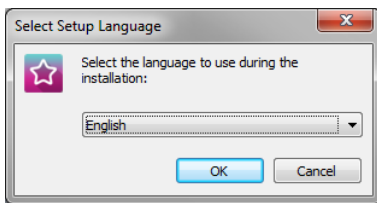
BioStar 2 supports a 64-bit operating system. Check the system type of your PC where the BioStar 2 API Server is to be installed and carry out its installation accordingly.

## Note

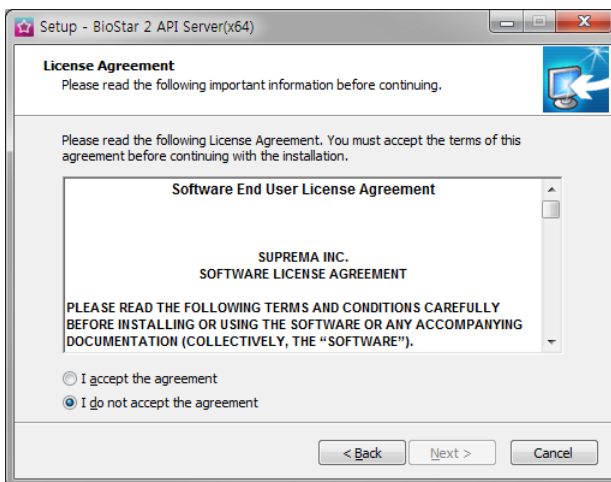
- Install BioStar 2 API Server on a PC which BioStar 2 is already installed. To install BioStar 2 API Server on a local network PC, Please contact the Suprema Technical Support Team (support@supremainc.com).

**1** Double-click the downloaded setup program. (ex. 'BioStar 2 API Server(x64).x.x.x.xx.exe')

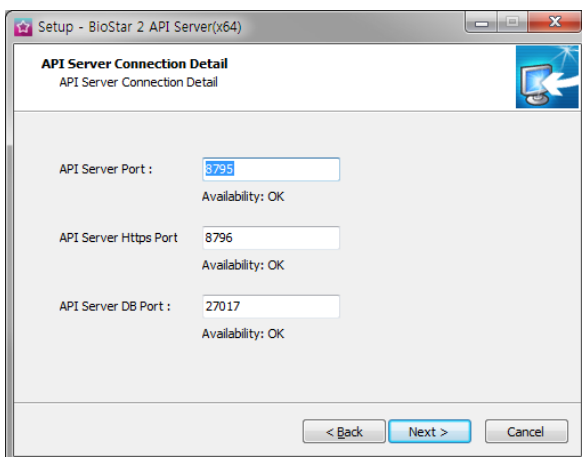
**2** Select a language and click **OK**.



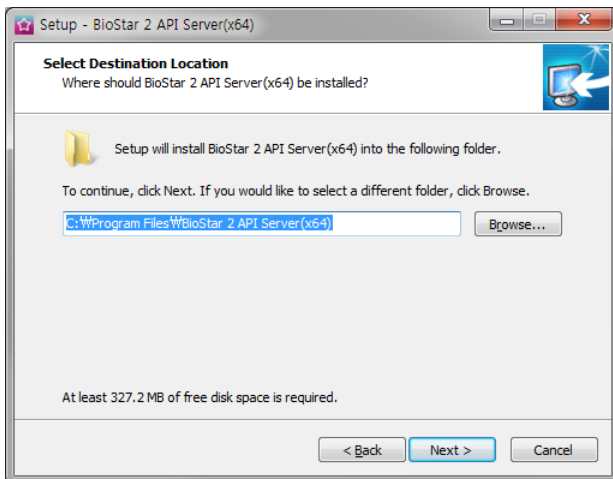
**3** To continue the installation, select **I accept the agreement** and click **Next**.



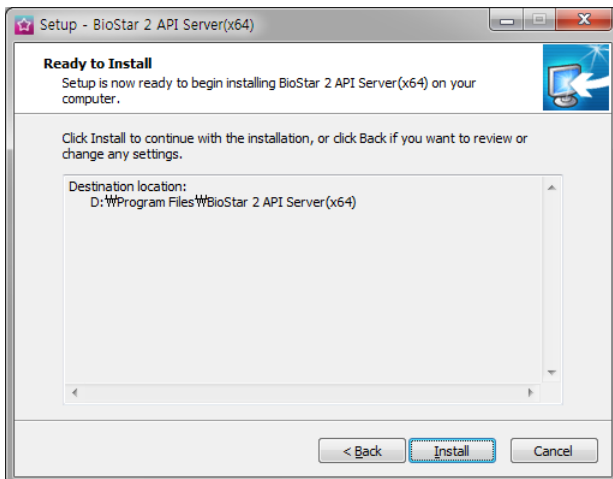
**4** Enter all fields correctly and click **Next**. We recommend that you use the default value.



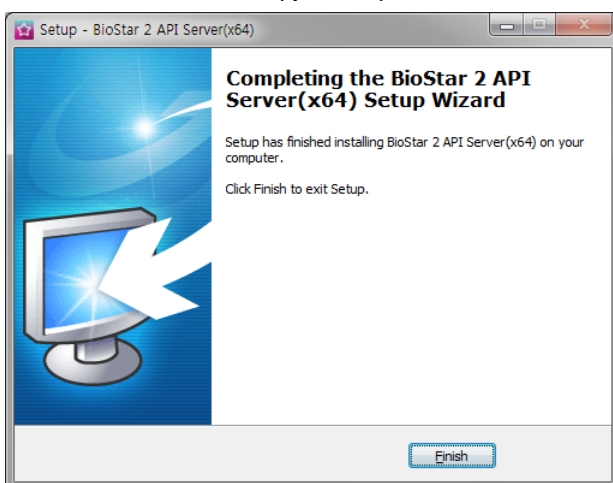
- 5 Click **Next** after setting a path for BioStar 2 API Server to be installed.



- 6 If ready to install, click **Install**.

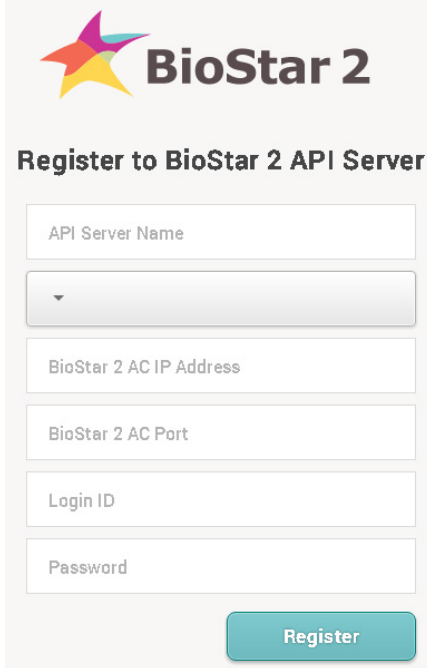


- 7 Click **Finish** after the file copy is complete.



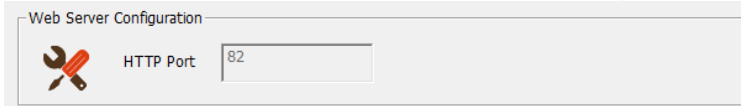
## Accessing BioStar 2 API Server

- 1 Double click the **BioStar 2 API Server(x64)** icon on the desktop.
- 2 BioStar 2 API Server registration screen will appear. Enter all fields correctly and click **Register**.



The registration screen features the BioStar 2 logo at the top. Below it, the title 'Register to BioStar 2 API Server' is displayed. The form contains several input fields: 'API Server Name', a dropdown menu, 'BioStar 2 AC IP Address', 'BioStar 2 AC Port', 'Login ID', and 'Password'. A teal 'Register' button is positioned at the bottom right of the form area.

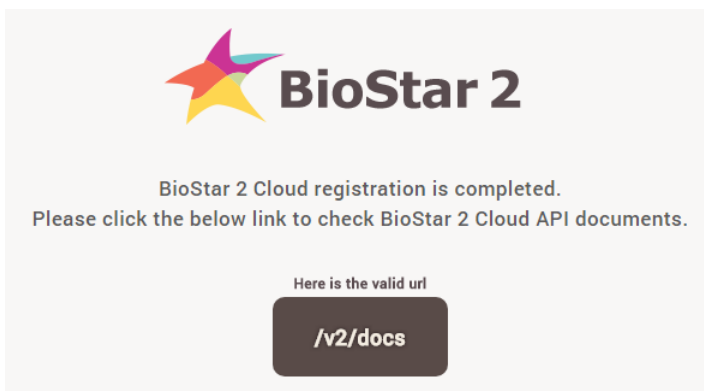
- Enter the subdomain name in the **API Server Name** field.
- Click the drop-down menu to select a protocol type.
- If installing on the same PC as BioStar 2, enter '127.0.0.1' for **BioStar 2 AC IP Address**.
- You can check the port of BioStar 2 on the **Web Server Configuration** of **BioStar Setting**.



The 'Web Server Configuration' dialog box shows a wrench and screwdriver icon next to the 'HTTP Port' label. The input field next to it contains the number '82'.

- Enter the administrator account information in the **Login ID** and **Password** fields.

- 3 When the registration is completed, the following screen appears.



The completion screen displays the BioStar 2 logo and the message: 'BioStar 2 Cloud registration is completed. Please click the below link to check BioStar 2 Cloud API documents.' Below this, it says 'Here is the valid url' and shows a dark button with the text '/v2/docs'.

4 To check the BioStar 2 API screen, click [/v2/docs](#).

The screenshot shows the BioStar 2 API documentation interface. At the top, there is a dark navigation bar with the 'suprema' logo on the left and 'Public API' and 'Quick Start' on the right. Below this, a left sidebar (orange background) lists categories: 'Public API' (Access Control, Auth, Card, Device, Device Group, Door, Door Group, Monitoring, Privilege, Reference, Setting, User, User Group) and 'Quick Start' (Basic Setup, Create User, Login, Get User List). The main content area is titled 'BioStar 2 API' and includes a note about HTTP headers: 'HTTP Header 'Content-Language' is used for language. ISO-639-1, ISO-639-3 values are supported.' Below this, a list of API endpoints is shown, each with a horizontal line underneath: Access Control, Card, Device, Device Group, Door Group, Door, Auth, Monitoring, Privilege, Reference, Register, Setting, User Group, and User.

 **Note**

- Basic Setup of Quick Start is only for BioStar 2 Cloud user.



[www.supremainc.com](http://www.supremainc.com)

---

Suprema Inc. 16F Parkview Office Tower, Jeongja-dong, Bundang-gu Seongnam, Gyeonggi, 463-863 Korea  
Tel) +82-31-783-4502 Fax) +82-31-783-4503

**Sales information** [sales@supremainc.com](mailto:sales@supremainc.com) **Technical support** [support@supremainc.com](mailto:support@supremainc.com)